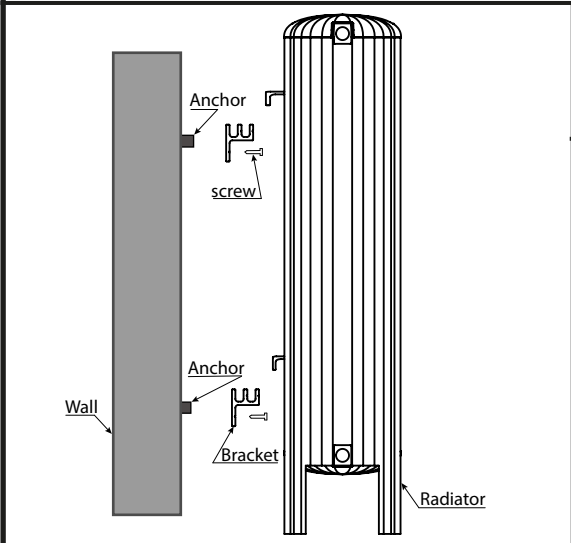
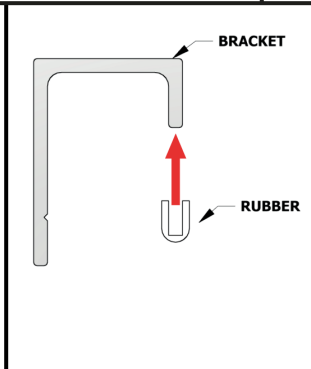
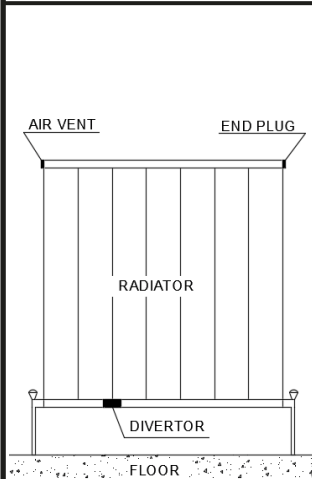
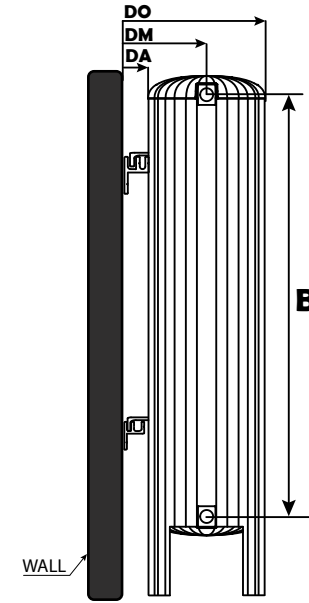
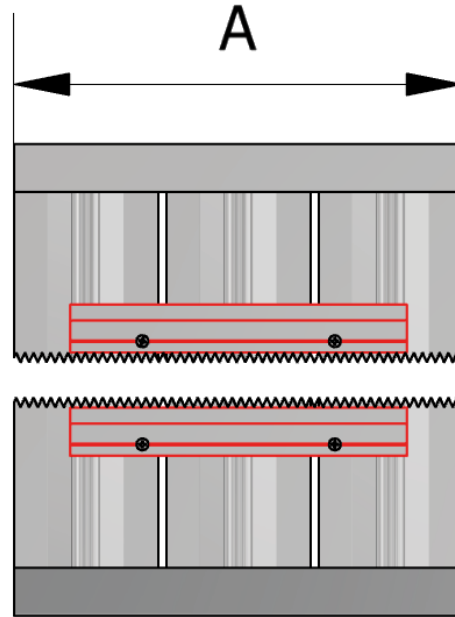


WINCHESTER INSTALLATION GUIDE

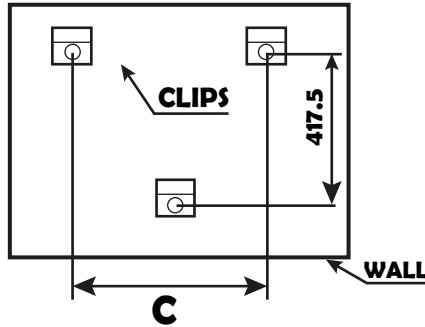
This product must be fitted only by a fully qualified installer.



CLIPS X 3 PCS	
WALL ANCHORS 3 PCS	
FIXING X SCREWS 3 PCS	
CAP X 2 PCS	
END PLUG X 1 PCS	
AIR VENT X 1 PCS	



The product was sent you as the rubber was wearred on the product. Make sure and control that the rubber is connected to product after montage process



NAMES	HEIGHT	A	B	C	DA	DM	DO
WINCHESTER	760	310	617,5	130	32	117	202
WINCHESTER	760	440	617,5	260	32	117	202
WINCHESTER	760	570	617,5	390	32	117	202

GENERAL RECOMMENDATION

- Before fitting the radiator it is necessary to wash out the heating system to remove any existing mud, scale, work residues, traces of flux, oil, etc.
- When the system water pH is outside the 8,5 -5,5 range and/or when the dissolved is above 0,1mg/liter, it is always needed to protect the heating system components (the radiator is one of these) with a proper chemical treatment compatible with all parts in contact with water (silicon rubber too).
- In order to fit the radiator to the wall, it is necessary to choose the proper fixings for the wall material.
- If the system water exceeds °50C, please install a warning mark near the radiator to avoid any accidental scalding.
- Clean the radiator surface only with a soft cloth to avoid scratching the finish and do not use chemical againts during cleaning operations. It is prohibited to climb onthe radiator.
- Maximum working temperature °95C, maximum working pressure 4 bar.