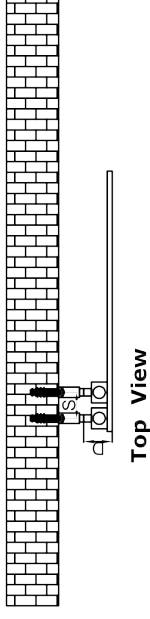
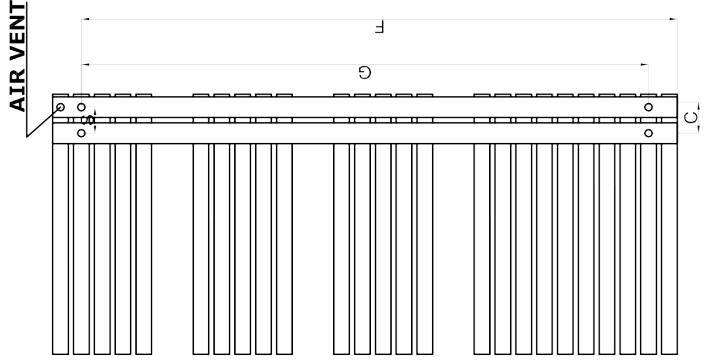
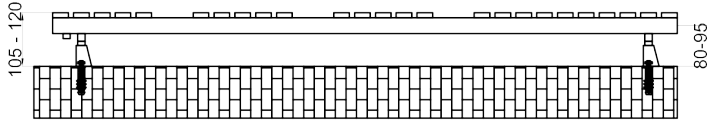
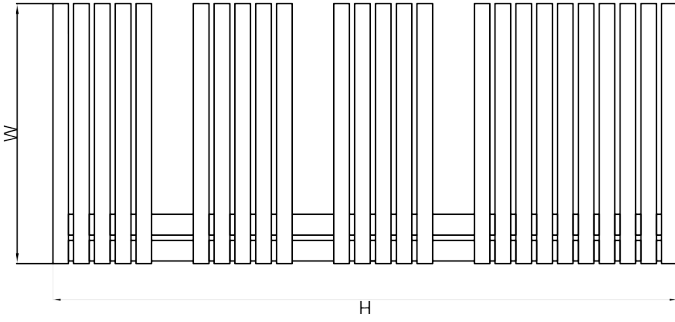


ENTICE - 500



Top View

SUPPLIED INSTALLATION ACCESSORIES



SCREW 4 PCS



WALL PLUG 4 PCS



INSERT 4 PCS



GRAB SCREW 4 PCS



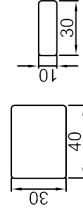
BRACKET 4 PCS



ALLEN KEY 1 PCS

Back View

MATERIAL DETAILS



Side View

Front View

- Vertical Mounting
- Optional 304 QUALITY STAINLESS STEEL RADIATOR: (RNS-ENT5120 : ENTICE RADIATOR)
- BRUSHED
- Max Operational Pressure: 10 Bar
- Inlet/Outlet: 1/2" Female Pipe Thread
- All Dimensions are in mm

Product Name	Product Code	Height	Width	Thickness	Plumbing Axes Center to Center	Hanger Axes Horizontal	Hanger to Bottom of the Product	Hanger Axes Vertical	Water Volume	Empty Weight	Thermal Output
		mm	mm	mm	mm	mm	mm	mm	L	kg	Watt - BTU/hr (Δ50°)
ENTICE 770 X 500	RNS-ENT5077	770	500	55	50	50	715	660	2.31	9.58	513 - 1750
ENTICE 1200 X 500	RNS-ENT5120	1200	500	55	50	50	1145	1090	5.62	14.96	802 - 2704
ENTICE 1700 X 500	RNS-ENT5170	1700	500	55	50	50	1645	1590	11.47	21.46	1154 - 3937

