



MAXFREE

X2 USER'S GUIDE



⚠ Pay attention to the switching sequence of the screen

1. Please ensure that all connected cables are securely fastened before use and are not loose.
2. Before using this product, please confirm whether the type-C/type-A port of your laptop can handle a continuous power supply of 10W (5V/2A). If the port does not support this power requirement, the brightness of the product may be reduced in order to maintain its functionality.

Windows

Mac

Android

Product Introduction

X2 is a multi-function plug-and-play dual-screen laptop monitor that is portable, foldable, and detachable. It can help quickly build a personal mobile studio. Provide a perfect solution for laptop users with a multi-screen synchronous display and multi-screen separate display, which can improve your work efficiency by up to 50% and achieve efficient multitasking. It supports the same screen display as some models of Samsung, Huawei, and others. It also supports the computer mode of the smartphone system as well as audio and video transmission, etc.

X2 holder is easy to use. Clamp the holder to the top of the computer screen, and it can be easily fixed without falling off. It can support the case of a laptop from 13 inches to 17.3 inches and can be removed and used as a single screen. The screen has support that can be adjusted for different angles, providing a different fun experience for professionals, office workers, gamers, stock traders, entrepreneurs, programmers, and students.

Each screen of X2 allows adjustment of brightness, sound, contrast, and other parameters independently, and is equipped with MINI HDMI/Type-C interface, saving the need for any docking stations. As long as it is a signal + power supply two-in-one Type-C laptop, the connected display can be realized with one cable. The desktop host/laptop /mini PC/ set-top box/game console and other devices with HDMI output interface can be directly connected to the display, but the screen needs an external power supply to light up (Type-C mobile phone charging cable can be used).

Finally, the X2 screen monitor can provide a complete 270-degree rotation on a single screen. You can choose your best view angle for the optimum visual experience.

CONTENTS OF INSTRUCTION

Product Specification

1. Monitor and Bracket	1
2. Accessories	1
3. Parameters	1

Installation and Stowing Mode

1. Opening mode	2
2. Diagram of bracket	2
3. Diagram of bracket snap	2
4. Opening mode when it is working	3
4.1. Open dual screen with computer	3
4.2. Forms triangle type with an angle of 45°	3
4.3. Single screen, vertical 45 connected to a computer	3
4.4. Stow dual screen	3

Connection Mode

1. Device-integrated one-line connection mode	4
2. Device power Supply connection mode	4

Audio settings

1. Switch settings of Windows 10 end audios output	5
2. Audio settings of MAC OS end	6

Display settings

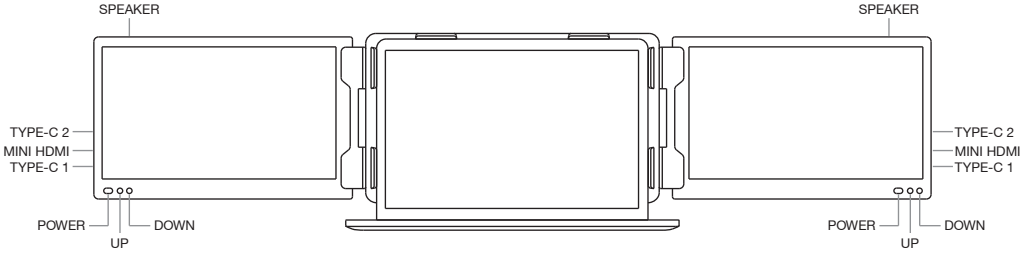
1. Switch settings of Windows 10 end video output	7
2. Switch settings of MACOS end video output	8
3. Mac OS Monterey Display Settings and Configuration	9

Screen Buttons settings	10
-------------------------------	----

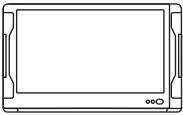
Delivery storage and usage Requirements	10
---	----

PRODUCT SPECIFICATION

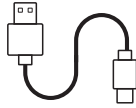
HOST



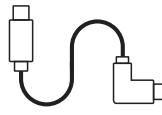
ACCESSORIES



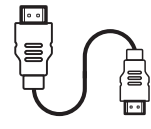
HOST



USB-A TO USB C



USB-C



HDMI TO MINI HD

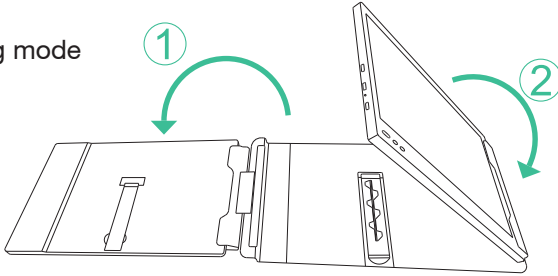
Parameters

WEIGHT:	1630g
SCREEN SCALE:	16:9
COLOR FIELDS:	75%
SIZE:	329x190x44.3mm
REFRESH RATE:	60Hz
RESOLUTION:	1920X1080 P
SPEAKER:	2

CONTRAST:	1000:1
SCREEN SIZE:	12 inches
PANEL TYPE:	IPS WIDE VIEWING ANGLE
AVERAGE BRIGHTNESS:	220CD/M
TYPE-C INPUT:	5V-20V/5A MAX
TYPE-C OUTPUT:	5V-20V/4.25A MAX
PORT:	TYPE-CX2+MINI HDMI

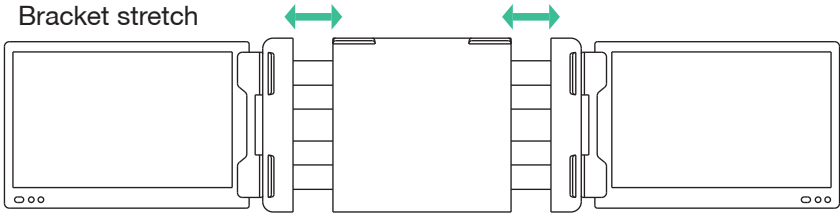
INSTALLATION AND STOWING STEP

Opening mode



*Note: Steps of open and close must be performed to avoid damage of device

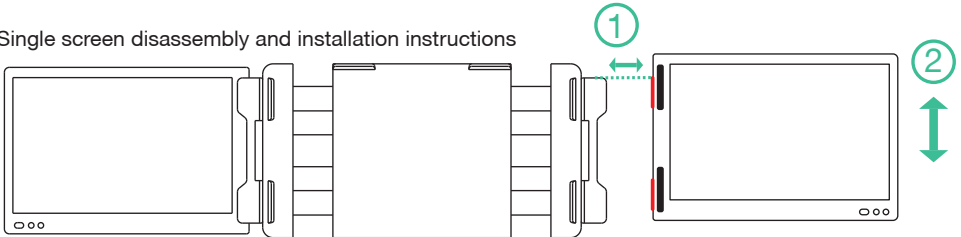
Bracket stretch



Fixing mode of device

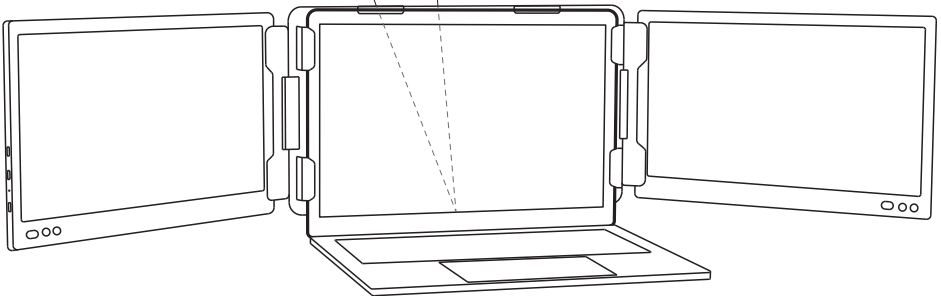
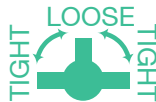
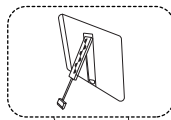


Single screen disassembly and installation instructions

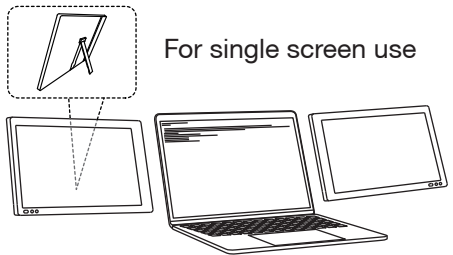
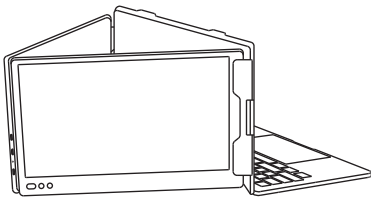
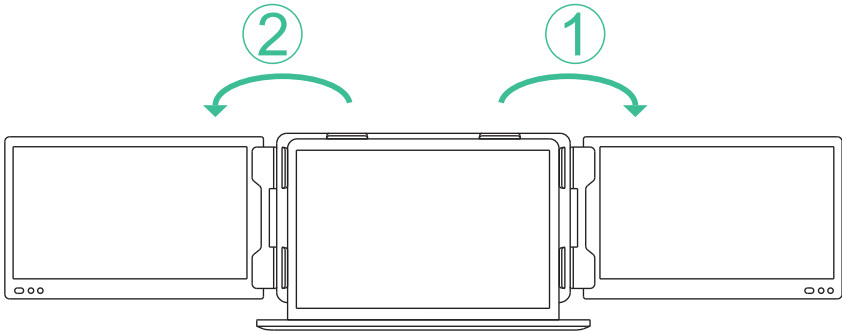


Note: Align and fix the bracket above the mounting hole on the side of the screen and load/remove as shown.

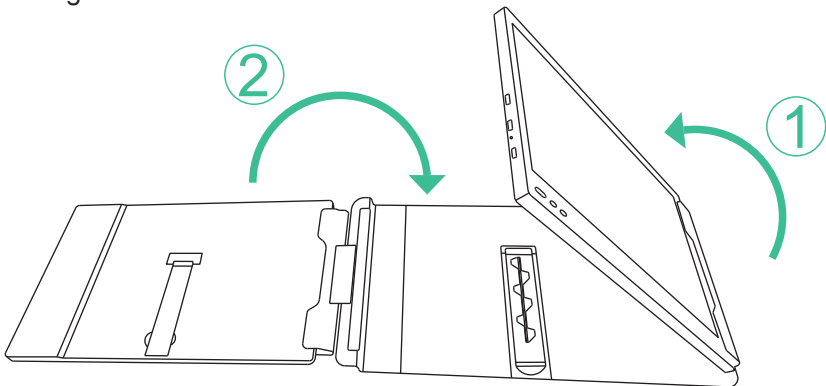
Support bracket



DUAL SCREEN OPENING WITH COMPUTER



Stowing of dual screen

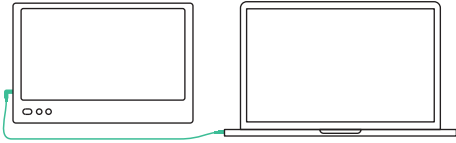


*Note: step of open and close must be performed to avoid damage of device.

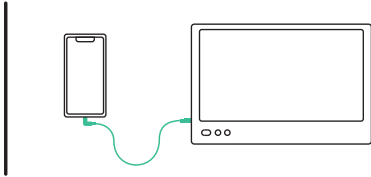
CONNECTION METHOD

Device integrated one line connection mode

Integrated one-line achieved with two in one of signal and power supply TYPE-C laptop or mobile phone



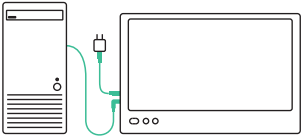
Integrated one-line of TYPE-C laptop



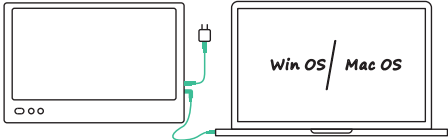
Integrated one-line of TYPE-C mobile phone

Connection mode of external power

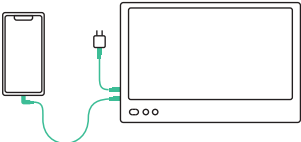
Note: desk-top computer or laptop or mini PC or set-top box directly displays with a HDMI port (the screen needs external power supply), and integrated one-line is achieved on TYPE-C ultrabook with signal and power supply in one.



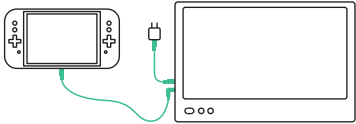
Desk-top computer connection mode
(external TYPE-C power)



Lap-top computer connection mode
(external TYPE-C power)



Mobile phone connection mode
(external TYPE-C power)



Switch connection mode
(external TYPE-C power)

AUDIO SETTINGS

1. Settings the sound output of Windows 10

1. Right click the loudspeaker icon down-right



2. Select "switch on sound " in the pop-up dialog box

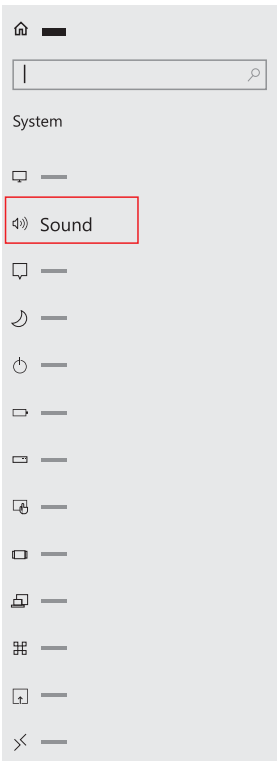
3. Left-click "turn on sound settings" and a pop-up dialog box as provid

Here users can set about sound

1. Master volume ;

2. Select output device: (1-speaker-R/speaker/2-speaker-L);

3. Device attributes.



Sound

output

Select output device

1-speaker-R (2-AMD High Definitio... ▾

Some apps can be set to use a different sound device than the one selected here. Please customize the app volume and device in advanced sound selection.

[Device attributes](#)

master volume

70

[Troubleshooting](#)

SETTINGS OF MAC OS COMPUTER

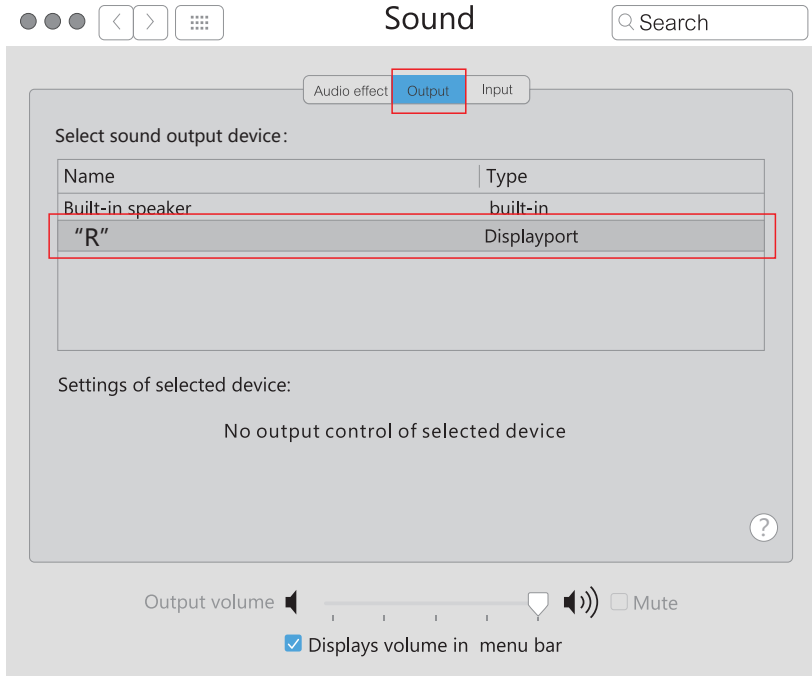
1. Settings the sound output of Mac OS

1. Click the settings icon of Mac OS



2. Select "sound" in the dialog box

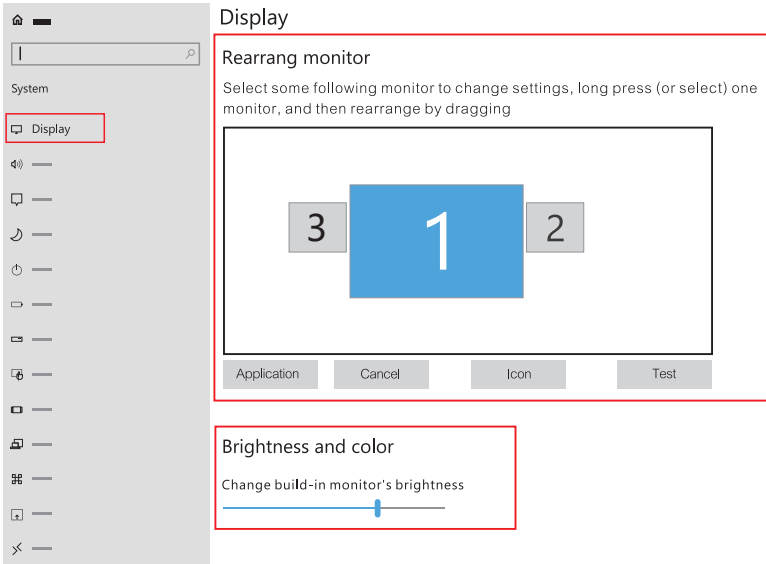
(1. Select output device: (1-speaker-R/speaker/2-speaker-L)



DISPLAY SETTINGS

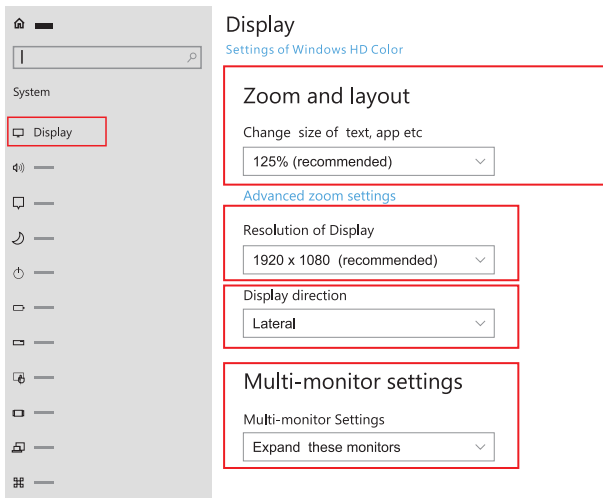
1. Setting the video output of Windows 10

1. Right-click in the blank area of the computer desktop, in the pop-up dialog box, left-click the “display settings” to pop-up the dialog box as shown.



2. As shown in above diagram, users can do settings in 'rearranged monitors'

3. Users can do settings on “brightness and color”



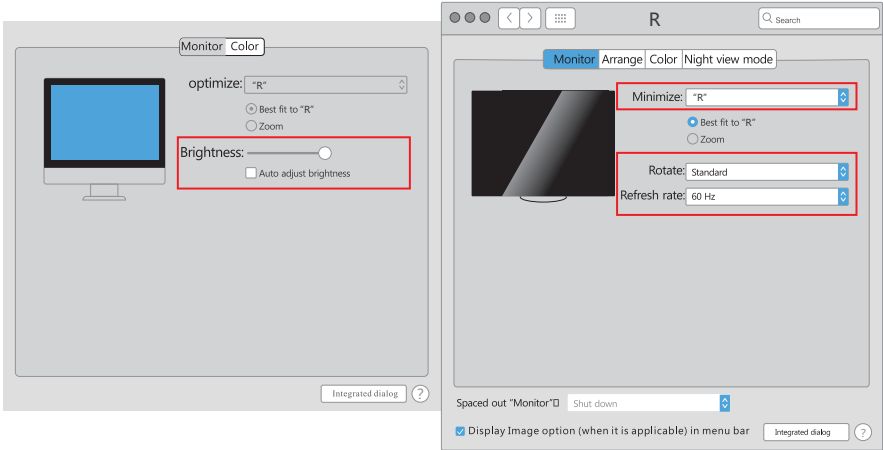
4. Do settings on “zoom and layout”, “resolution”, “display direction” and “multi monitor settings”

2. Settings the video output of Mac OS

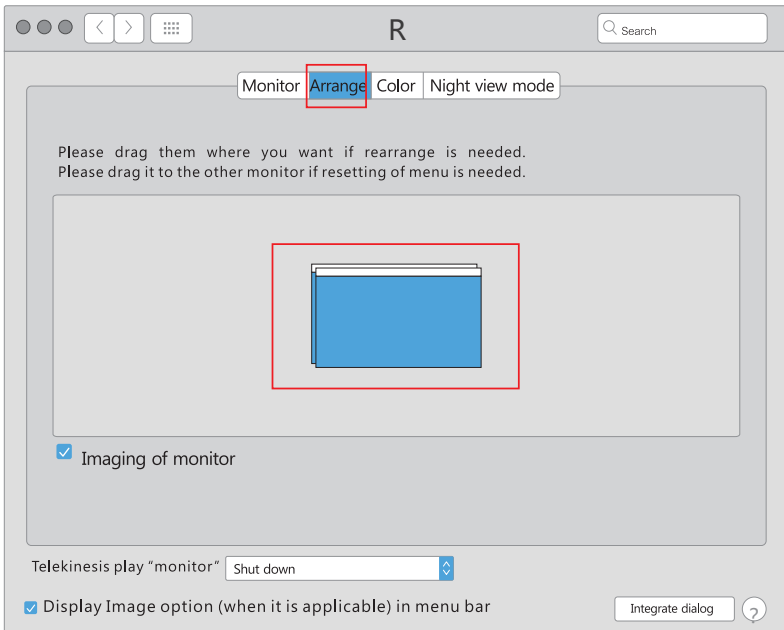
1. Click "settings" icon



2. Select "monitor" in pop-up box as shown, users can do settings on display output, rotate, refresh rate and brightness.



3. Click "arrange" in the display setting menu to pop up the display box as shown where the user can set the arrangement mode / image of the expanded screen

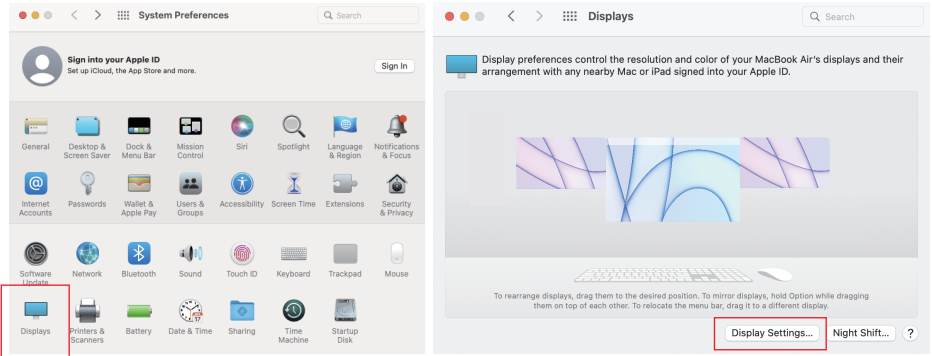


3. MacOS Monterey Display Settings and Configuration

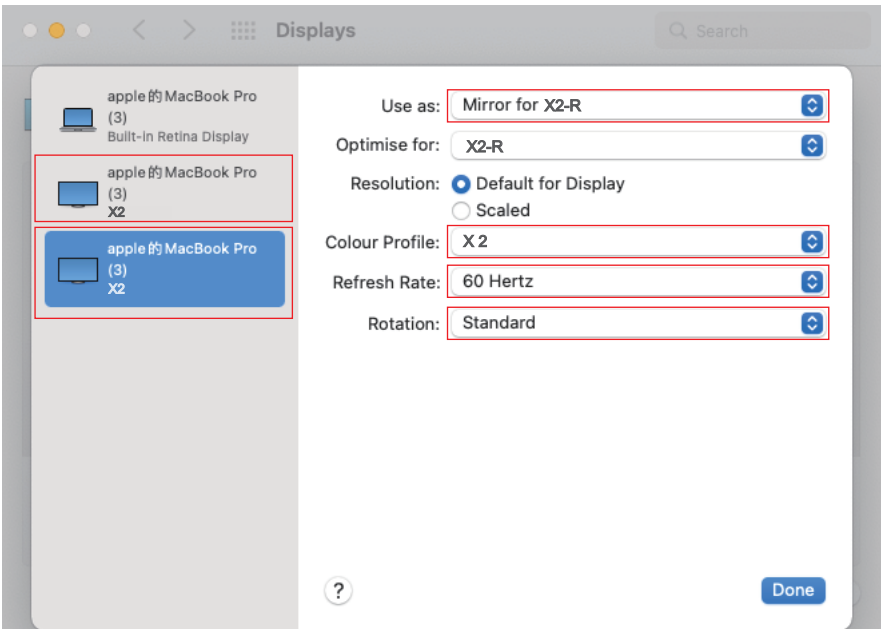
1. Enter the "System Preferences" menu



2. Select "Displays" in the dialog box, and a pop-up box as shown in the figure below will show. The user can now configure their displays to their liking. (To rearrange displays, drag them to the desired position. To mirror displays, hold the option while dragging them on top of each other, To relocate the menu bar, drag it to a different display



3. In this menu the user is able to adjust the orientation of the device by clicking and dragging the windows to their desired positions. Clicking 'Display Settings' will then take you to further options.



SCREEN BUTTONS SETTINGS

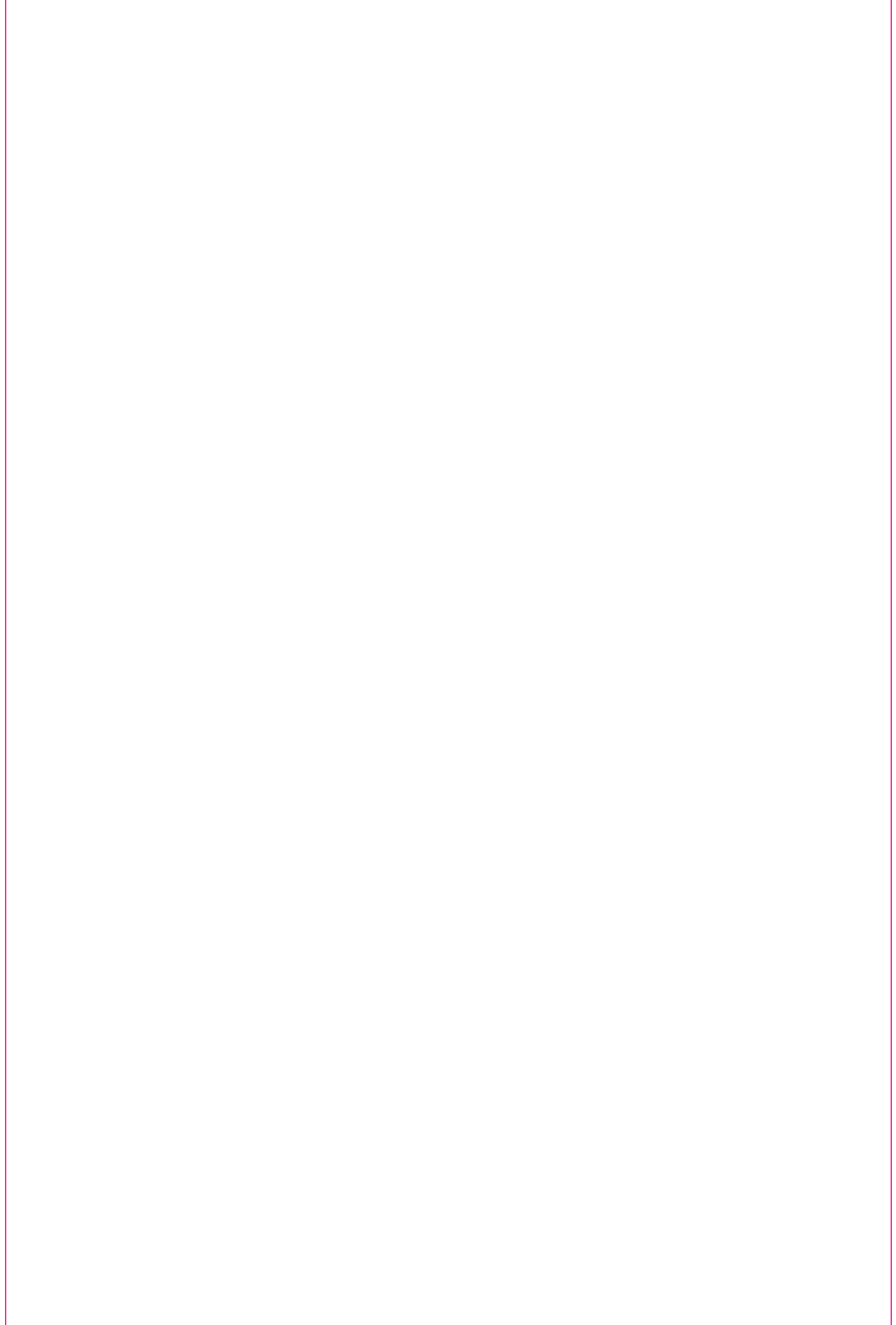
Keys	Operation	Function
POWER Key	1. short press "POWERS" when in shut down situation	screen power on wait for 1.5 seconds and an image appears after 3s LOGO is displayed onscreen
	2. In the situation of power on but no OSD menu: long press POWER for 2 seconds	shut down: screen shuts down and no audio outputs
	3. select the cursor in the OSD menu interface, short press POWER for 1 second	Functions as "confirm"
	4. Long press for 2 seconds in OSD menu	Functions as "return" key
UP Key	1. when no OSD menu, short press;	Pop up the shortcut menu of the volume progress bar
	2. when the OSD menu displays progress, short press	click to switch up the current option once or add a parameter with the smallest unit
	3. when the OSD menu displays progress, long press	short cut adjust parameters or options
	4. when in the OSD menu interface, short press	Move cursor up
DOWN Key	1. when no OSD menu is displayed, short press	Pop up the short cut key of brightness progress
	2. when the OSD menu displays progress, short press	click to switch up the current option once or add a parameter with the smallest unit
	3. when the OSD menu displays progress, long press	short cut adjust parameters or options
	4. when in the OSD menu interface, short press	Functions such as moving down the Cursor

Delivery storage, and usage requirements

To ensure the normal use of this product and prevent accidents such as electric shock or fire, please read and understand all user requirements and operating procedures before using please strictly abide by the following requirements.

1. please tear off the protective film on the screen surface before use;
2. The DC Power supply required by this product is AC / DC Power adapter, which should be far away from the heat source and placed in a good vent-late place. The AC Power socket and AC Power line should be well grounded and can withstand enough current demand
3. The DC Power input required by this product is 5v-20v±2v
4. Attention should be paid to avoiding excessive humidity and dust, To avoid circuit corrosion and failure;
5. screen surface should not be challenged by external force;
6. Do not use sharp tools to touch the screen surface;
7. This product fits general business and domestic use, and ambient temperature ranges from -20~60°C are recommended;
8. please power off the power source when stop using the device.

* This manual is applicable to 10.8-inch product, 11.6-inch product and 12-inch product.





MAXFREE

— www.maxfree.com —

— www.maxfreeofficial.com —

The manufacturer reserves the right to make changes to the product
and update this manual at any time.

Any question, please contact: support@maxfree.com