



# MAXFREE

## S1 USER'S GUIDE



### Pay attention to the switching sequence of the screen

1. Please ensure type-c data wire is connected well with device interface.
2. This product supports whole function of type-c (charging and video), integrated one line. If screen cannot be powered on or restarted, please supply external power of 5V, 2A.
3. The HDMI interface used to connect the product must use the custom HDMI TO TYPE-C data cable included in the product packaging and be externally powered.

Windows

Mac

Android

---

## Contents Of Instruction

---

<b>Product Attributes</b>	1
---------------------------	---

### **Installation and Storage**

1. Opening Mode	2
2. Outrigger Stretch	2
3. Using the Kickstand	2
4. Connect S1 with Laptop	3
5. Connect S1 with Mobile Phone and Other Devices	4
6. Disassemble the S1	5

### **Audio Settings**

1. Change Sound Settings of Windows 10 / Windows 11	6
2. Change Sound Settings of MAC OS PC	7

### **Display Mode**

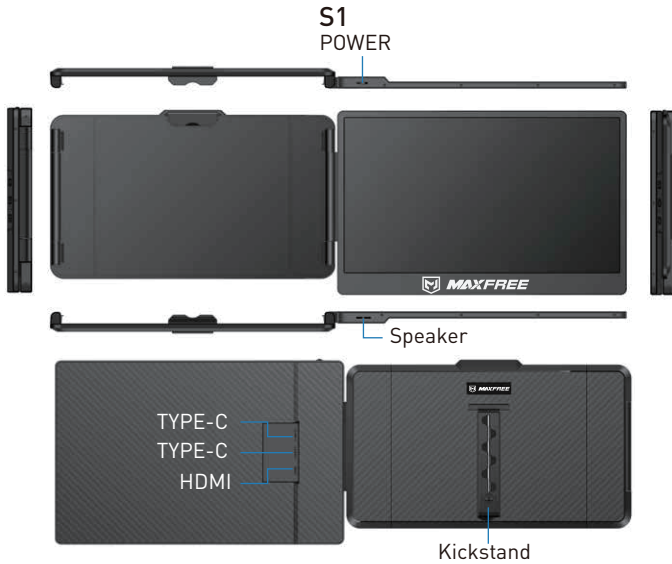
1. Windows 10 / Windows 11 Display Settings and Configuration	8
2. MacOS 13 Ventura Display Settings and Configuration	9

### **OSD Settings**

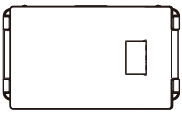
1. Button Operation Guide	10
2. Transportation, Storage and Use Requirements	11

<b>Question &amp; Answer</b>	11
------------------------------	----

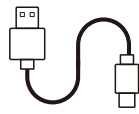
# Product Attributes



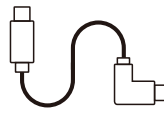
## Accessories



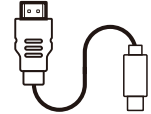
S1



TYPE-A to TYPE-C



TYPE-C to TYPE-C



HDMI to TYPE-C



BAG

## Specifications

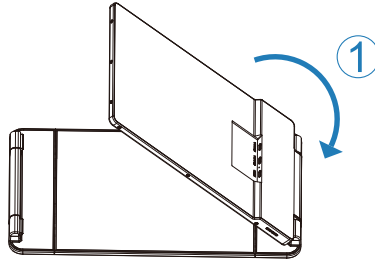
Weight:	1.06 Kg	Contrast:	1000:1
Screen Scale:	16:9	Screen Size:	14 Inches
Color Fields:	72%	Panel Type:	IPS Wide Viewing Angle
Size:	353x207x23mm	Average Brightness:	300CD/M <sup>2</sup>
Refresh Rate:	60hz	Type-c Input:	5V-20V / 5A Max
Resolution:	1920x1080 P	Type-c Output:	5V-20V / 4.25A Max
Speaker:	1	Port:	Type-cx2 HDMIx1

Carefully check package contents, if anything is missing or damaged, please contact Maxfree customer service for support: [support@maxfree.com](mailto:support@maxfree.com)

# Installation and Storage

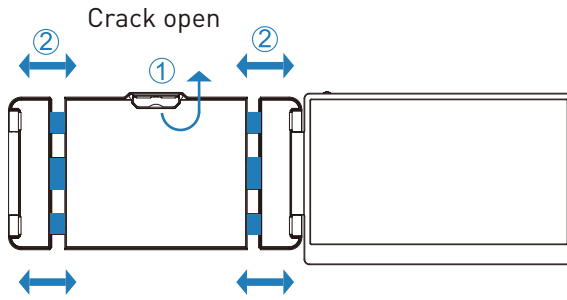
---

## 1. Opening Mode



\*Note: sequence of open and close must be performed to avoid damage of device

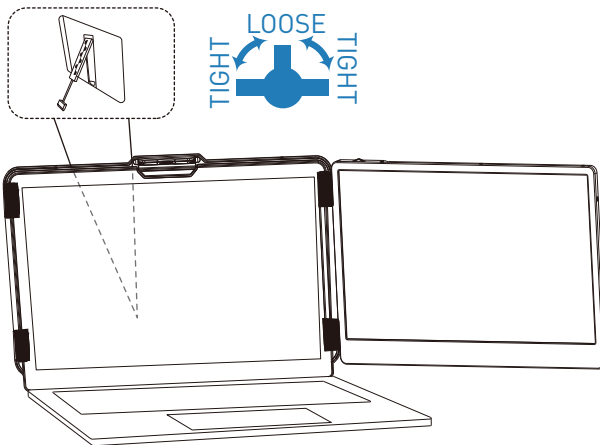
## 2. Outrigger Stretch



Step 1: Loosen the Top Stop Buckle  
Step 2: Pull out the stand to a suitable size and adjust the S1 to a suitable size

## 3. Using the Kickstand

Support bracket



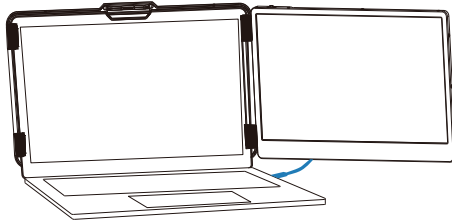
Adjust the support bracket on the back of the product to the desired length

---

## 4. Connect S1 with Laptop

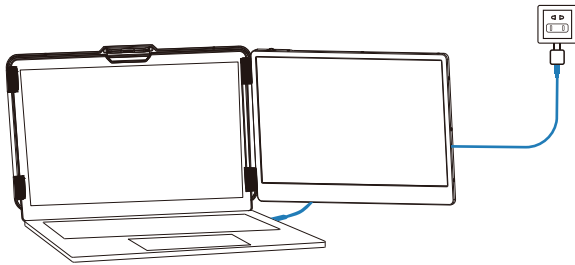
Connect S1 to your laptop and check that your laptop has a Type-C, Type-A or HDMI port that can provide 5V/2A power.

Connect S1 to your laptop through S1 Type-C and HDMI port, following the options below:

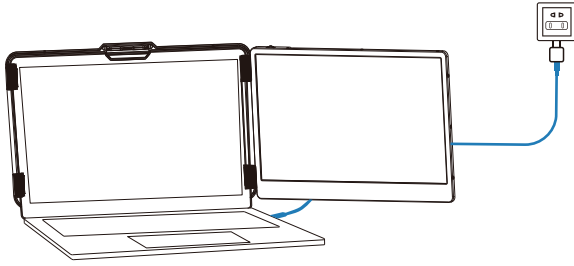


### Connect to S1 through the Type-C interface of the notebook

Option 1: If your laptop has Type-C ports (full function ports), and the Type-C output port of the laptop can provide more than 5V/2A power supply, directly connect the S1 and the laptop with one Type-C cables.

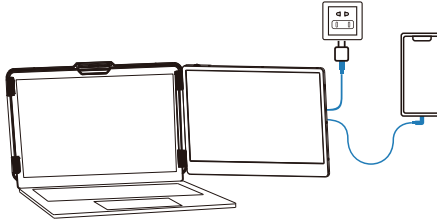


Option 2: If your laptop has Type-C ports (full function ports), and your laptop Type-C outlet cannot provide more than 5V/2A power supply or the display has no signal/the signal is unstable after connection, then you need to connect an external 5V/2A adapter to power S1. Then connect the S1 to the laptop with one Type-C cables.

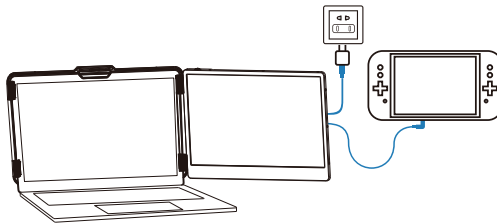


To connect the S1 screen to your laptop via the HDMI interface, follow these steps:  
Option 3: If there is only one HDMI port on your laptop, you can use an HDMI TO Type-C cable to connect the S1 screen to the HDMI port of your laptop. Then use a USB-A TO Type-C cable to provide power to the S1 screen.

## 5. Connect S1 with Mobile Phone and Other Devices



Mobile phone connection mode  
(External power needed)

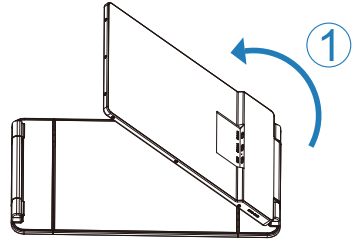
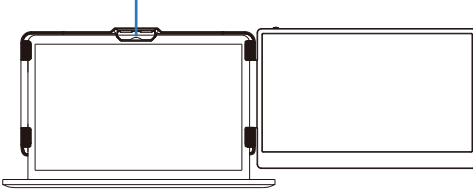


Switch connection mode  
(External Type-c power)

---

## 6. Disassemble the S1

Fold the top stop buckle



Note: sequence of open and close must be performed to avoid damage of device.



When folding the screen, the bracket must be pulled out to an appropriate size as shown in the picture, and the screen must be fixed in the silicone of the bracket, otherwise forcibly closing it will damage the screen!

# Audio Settings

---

## 1. Change Sound Settings of Windows 10 / Windows 11

1.1 Right click the loudspeaker icon down-right

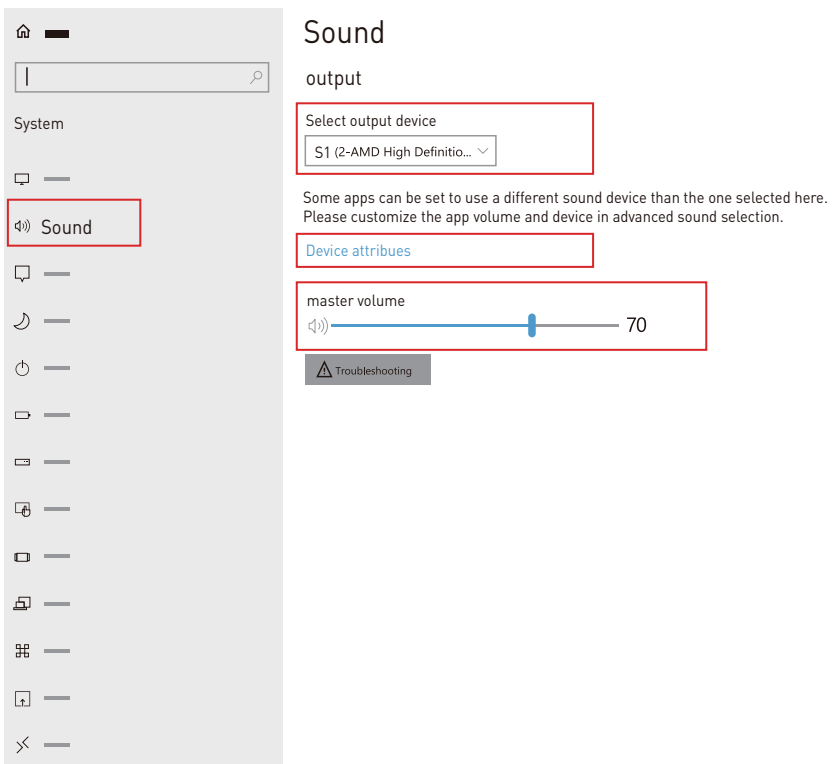


1.2 Select "switch on sound " in pop-up dialog box

1.3 Left click "turn on sound settings" and pop-up the box as provided,Here users can set about sound;

### Here users can set about sound

1. Master volume;
2. Select output device: { S1-R / Speaker };
3. Device attributes.





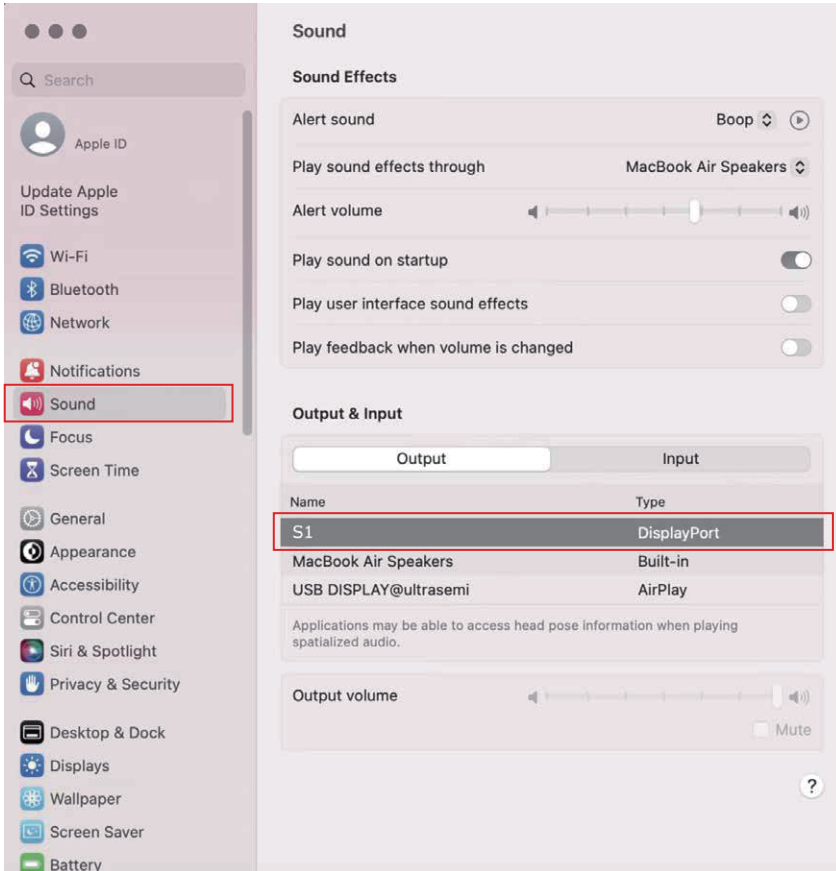
# Audio Settings

## 2. Change Sound Settings of MAC OS PC

2.1. Choose Apple menu > System Settings



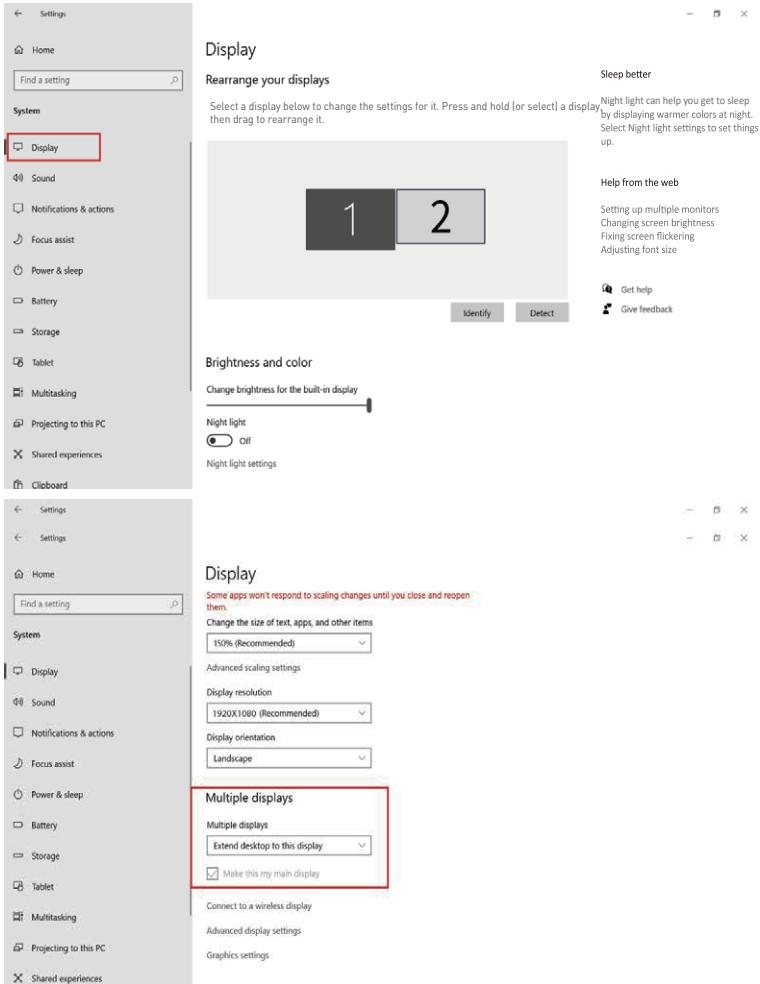
2.2. Click "Output", then select the device you want to use in the list of sound output devices: [ S1 / Speaker ]



# Display Mode

## 1. Windows 10 / Windows 11 Display Settings

- 1.1 Right-click a blank area of the desktop. Select 'Display Settings' from the pop-up dialogue box. Left-click "Display Settings" to open the settings dialogue box, as shown.



- 1.2 Under the "Rearrange displays" section, drag and drop each display to rearrange them according to their physical layout on your desktop. Scroll down to the bottom of the page to further configure the display for extended or mirrored mode.

# Display Mode

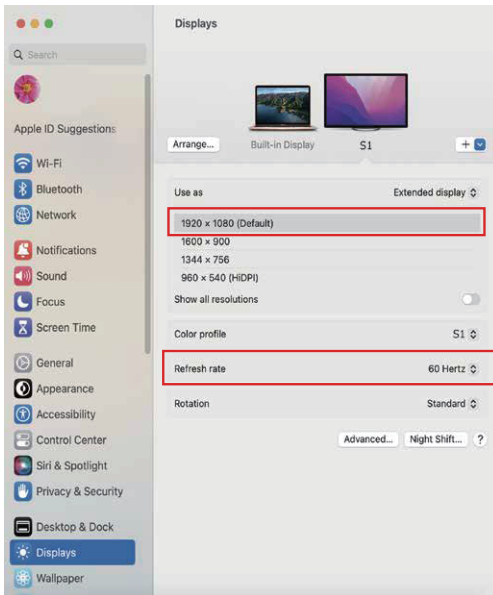
## 2. MacOS 13 Ventura Display Settings

2.1 Enter the "System Preferences" menu



2.2 Configure your monitor

In this menu, you can set the resolution and mirror/expand the display you want.



2.3 Arrange Displays

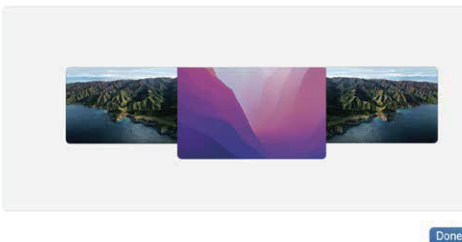
To rearrange displays, drag them to the desired position.

To mirror displays, hold Option key while dragging them on top of each other.

To relocate the menu bar, drag it to a different display.

### Arrange Displays

To rearrange displays, drag them to the desired position. To mirror displays, hold Option key while dragging them on top of each other. To relocate the menu bar, drag it to a different display.



## 1. Button Operation Guide

### Key Definition

Toggle down "Minus"  
Backlight Adjustment Button

Toggle up "Plus"  
Volume Adjustment Button



Classification	Key Function	Remark
Before entering the menu	Click to enter the menu interface	/
	Press and hold for 3 seconds to turn on / turn off the screen	/
	Toggle up to increase volume	"+"
	Scroll down to decrease the volume	"_"
After entering the menu	Click to enter the corresponding column	Confirm
	Long press for 2 seconds to exit the selected screen	Return
	Scroll up/down to select the corresponding column	Choose

---

## 2. Transportation,Storage and Use Requirements

In order to ensure the normal use of this product and prevent accidents such as electric shock or fire, please read and understand all use requirements and operation procedures before using.

Please strictly abide by the following requirements.

1. Please tear off the protective film on the screen surface before use.
2. The DC power supply required by this product is AC/DC power adapter, which should be far away from heat source and placed in a well ventilated place. The AC power socket and AC power line should be well grounded and can withstand enough current demand.
3. The DC power input required by this product is 5V-20V  $\pm$  2V.
4. Attention should be paid to avoid excessive humidity and dust, so as to avoid circuit corrosion and failure.
5. Screen surface should not be challenged by external force.
6. Do not use sharp tools to touch the screen surface.
7. This product fits general business and domestic use, and ambient temperature ranging from -20~60°C is recommended.
8. Please power off power source when stop using device.

## Question & Answer

1. Is this product plug and play?

A: Yes.

2. When connecting, it shows "no signal" or "signal flashing", and the computer cannot recognize it. What can I do?

A: Please connect an external power supply with a rating of 5V/2A for enough power delivery.

3. Is the screen brightness sufficient? Can it be adjusted according to my needs?

A: The screen has a maximum brightness of 220cd/m<sup>2</sup>. When the product is not connected to an external adapter, the brightness can be adjusted to 30%. When connected to an external adapter, the brightness can be adjusted to 100%.

4. Is the monitor powered by USB or an external power source?

A: The display can be powered either by the laptop (requires a power supply of more than 5V/2A) or directly by an external power source.



**MAXFREE**

— [www.maxfreeofficial.com](http://www.maxfreeofficial.com) —

The manufacturer reserves the right to make changes to the product and update this manual at any time.

Any question, please contact: [support@maxfree.com](mailto:support@maxfree.com)