



## F2 USER'S GUIDE



### Pay attention to the switching sequence of the screen

1. Ensure that all connected cables are secure and not loose before usage.
2. The continuous power required for this product is 10W. Please confirm that the Type-C or Type-A port of the laptop can withstand 10W (5V/2A), if not, the brightness of the product will be reduced to maintain the function.

Windows

Mac

# Contents

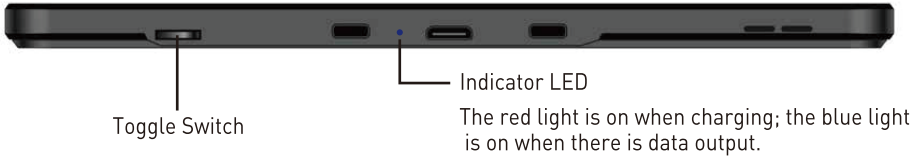
<b>Quick Guide</b> .....	1
<b>Installation and Storage</b>	
1. Method of Unfolding .....	2
2. Installing the Screen .....	2
3. Various Applications of Dual Screens .....	3
4. Connect F2 with Laptop .....	4
5. Connect F2 with Mobile Phone .....	5
6. Connect F2 with Other Devices .....	5
7. Disassemble the Screen .....	6
8. Storage of the F2 .....	7
<b>Audio Settings</b>	
1. Switch Settings of Windows 10 / Windows 11 Computer End Output .....	8
2. Settings of MACOS Computer End Sound .....	9
<b>Display Settings for Windows 10/Windows 11/MacOS</b>	
1. Windows 10 / Windows 11 Display Settings .....	10
2. MacOS 13 Ventura Display Settings .....	11
<b>OSD Settings</b>	
1. Button Operation Guide .....	12
2. Transportation, Storage and Use Requirements .....	13

# Product Contents

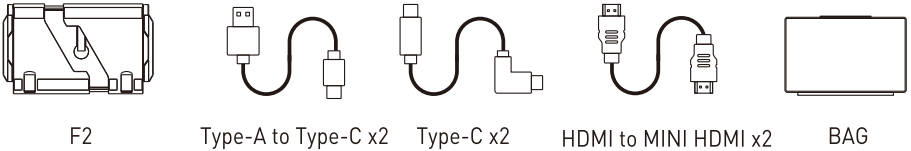
## F2



## Key Definition



## Accessories



Carefully check package contents, if anything is missing or damaged, please contact Maxfree customer service for support: [support@maxfree.com](mailto:support@maxfree.com)

## Product Specifications

Product Model:	F2	Product Weight:	2.62 KG	Product Size:	389.5x248x28MM
Resolution:	1920*1080P	Panel Type:	IPS	Louds Peaker:	2 PCS
TYPE-C Input:	5-20V/5A	TYPE-C Output:	5-20V/4.25A	Refresh Rate:	60Hz

## Quick Guide

Q1: How to check if the Type-C port on my laptop is a full-function port?

A1: If your laptop have a USB-C port with one of the following symbols (or the Thunderbolt 3, Thunderbolt 4, DP 1.2), then it is the Full-function Type-C port, you can use the Type-C to C cable to connect each screen. (You can check the manual or go online to check the computer port parameters.)



Q2: Why does one monitor show "No Signal" ?

A2: <1>: If the cable you are using is Type-C, it means that your computer's Type-C port only supports power and has no video output, you also need to connect an HDMI cable to the screen to provide video signal output.

<2>: If you are using HDMI as video output, and connect a Type-C cable. It means that your laptop can't provide 5V/2A power through the Type-C port, you also need to connect an external 5V/2A power adapter to power the screen.

Q3: The screen does not light up after connected?

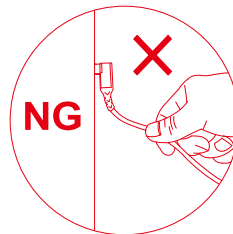
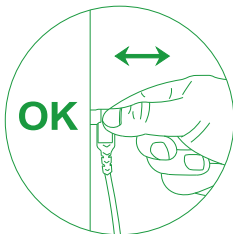
A3: <1>: Check if your laptop's Type-C port supports display and power delivery, if the port does not support, please use the included HDMI cable and Type-C to Type-A cable (or Type-C cable) to connect the screen.

<2>: Please use the included Type-C cable to connect an external power supply that provides 5V/2A to power the screen.

## Warm Tips

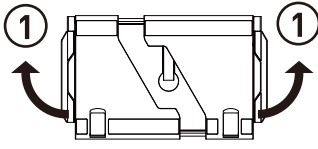
How to plug and unplug the Type-C cable correctly:

You need to pinch the head of the Type-C cable to plug and unplug the cable as shown in the picture, otherwise, the cable will be damaged.

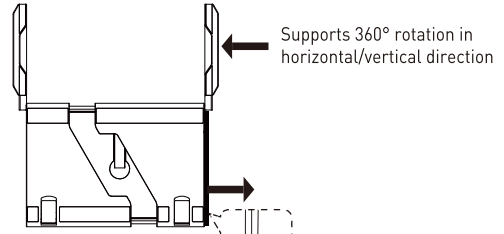


# Installation and Storage

## 1. Method of Unfolding




Open the supports on both sides

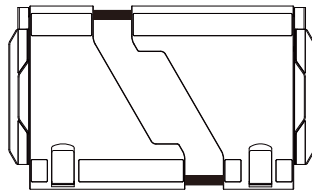


Press to pop up the screen



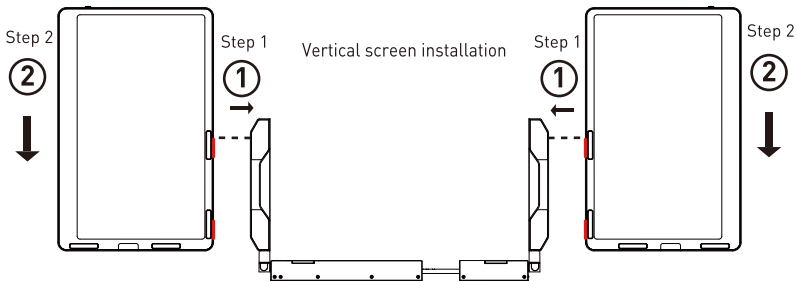
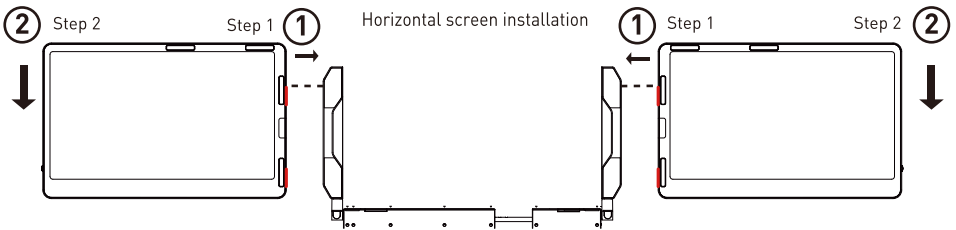
Remove the left and right screens in order

Adjust the base size to fit the laptop  ③



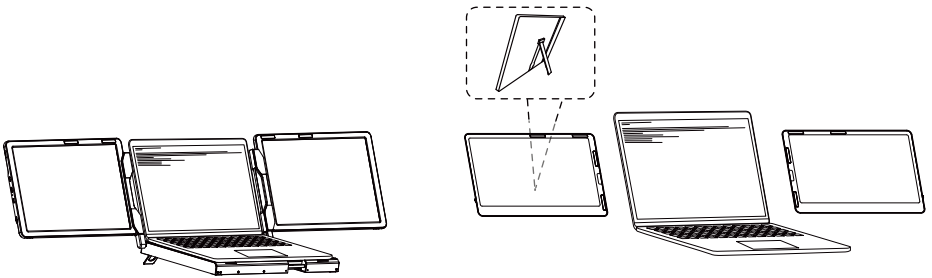
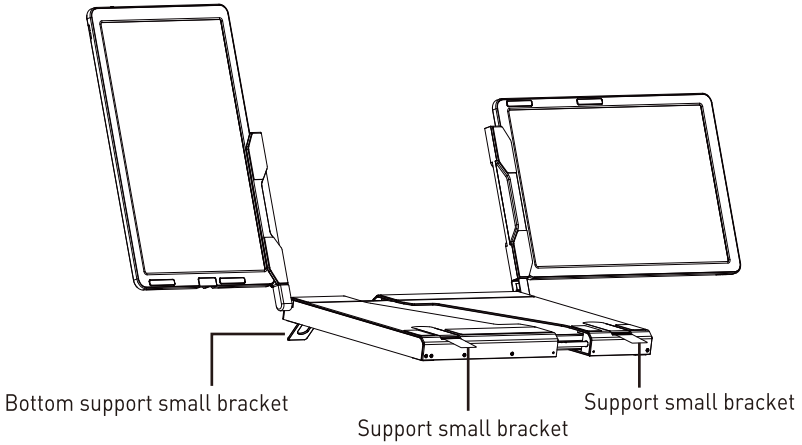
 Note: The maximum stretching length of the base is 408mm

## 2. Installing the Screen



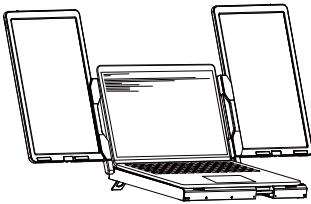
Step 1: Align the card slot of the screen with the buckle in the shaft, and press it in the direction shown in the figure  
Step 2: Press the screen in the direction shown in the figure until the screen snaps into place

### 3. Various Applications of Dual Screens



Landscape display

For single screen use



Portrait display



Horizontal and vertical screen display

## 4. Connect F2 with Laptop

Connect F2 to your laptop and check that your laptop has a Type-C, Type-A or HDMI port that can provide 5V/2A power.

Connect F2 to your laptop through F2's Type-C and MINI HDMI port, following the options below:

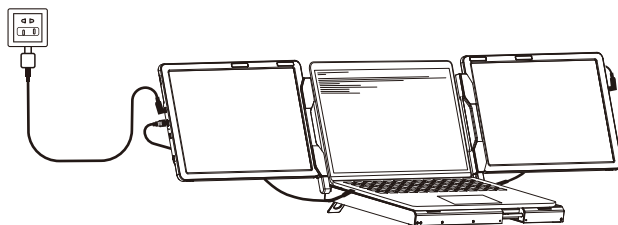


Connect to F2 through the Type-C interface of the notebook

Option 1: If your laptop has two Type-C ports (full function ports), and the Type-C output port of the laptop can provide more than 5V/2A power supply, directly connect the F2 and the laptop with two Type-C cables.



Option 2: If your laptop has 2 Type-C ports (full function ports), and your laptop Type-C outlet cannot provide more than 5V/2A power supply or the display has no signal/the signal is unstable after connection, then you need to connect an external 5V/2A adapter to power F2. Then connect the F2 to the laptop with two Type-C cables.



Connect to F2 through the HDMI interface of the notebook

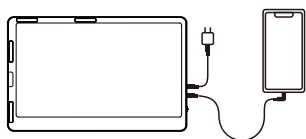
Option 3: If your laptop has 1 Type-C and 1 HDMI port, you can use a Type-C cable to connect an F2 screen to the Type-C port of the notebook, and then use an HDMI-mini HDMI cable to connect an F2 screen to the HDMI port of the notebook. After that, you can connect a 5V/2A adapter to power the F2 screens.



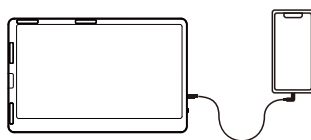
Connect to F2 through the Type-A interface of the notebook

Option 4: If your laptop has two Type-A ports, and your laptop's Type-A outlet cannot provide more than 5V/2A power supply or the display has no signal/the signal is unstable after connection, then you need to connect an external 5V/2A adapter to power F2. Then connect the F2 to the laptop with two Type-A to Type-C cables.

## 5. Connect F2 with Mobile Phone



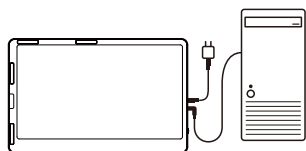
Mobile phone connection mode  
(External power needed)



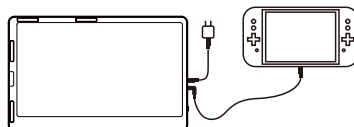
One Type-C cable to connect to the mobile phone

## 6. Connect F2 with Other Devices

Connect the F2 to the desk-top computer host, switch, mini PC, or set-top box (the screen needs an external power supply)



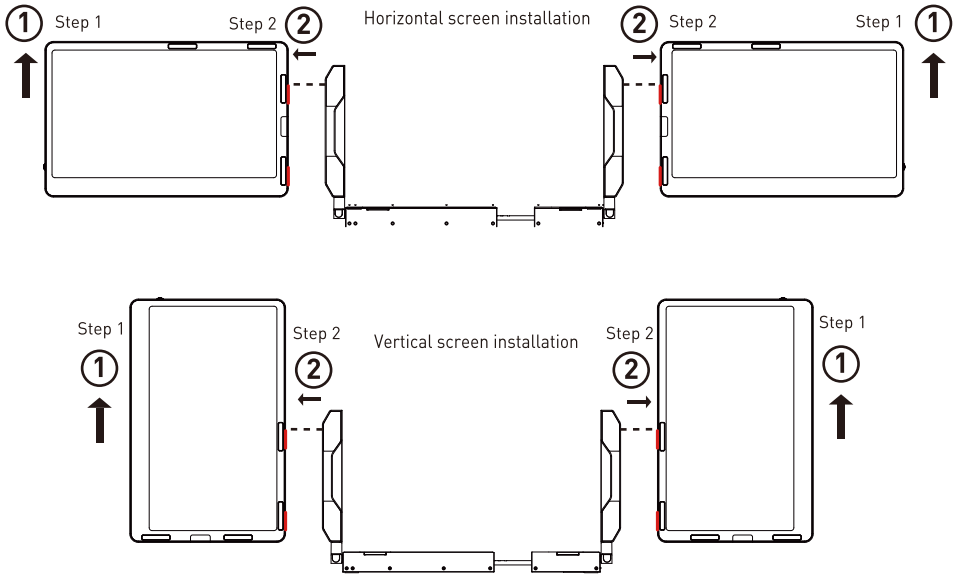
Desk-top computer connection mode  
(External Type-c power)



Switch connection mode  
(External Type-c power)



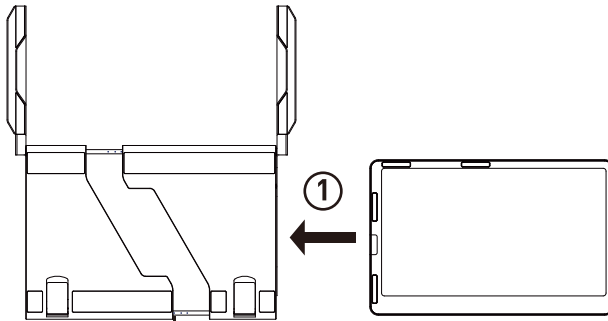
## 7. Disassemble the Screen




Step 1: Push up the screen in the direction shown in the figure

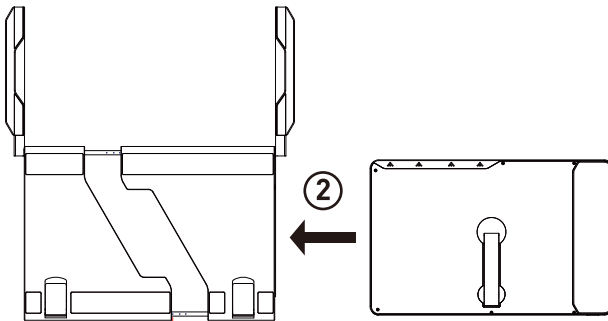
Step 2: Pull the screen out from the buckle of the hinge according to the direction shown in the figure

## 8. Storage of the F2



storage screen  Press the screen until you hear a click

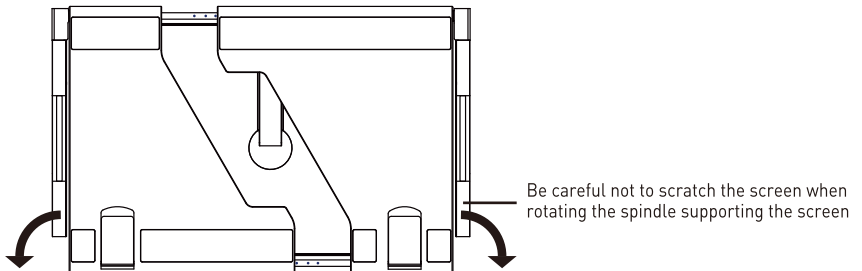
Install the right screen into the bottom storage box of the bracket as shown in the figure



storage screen  Press the screen until you hear a click

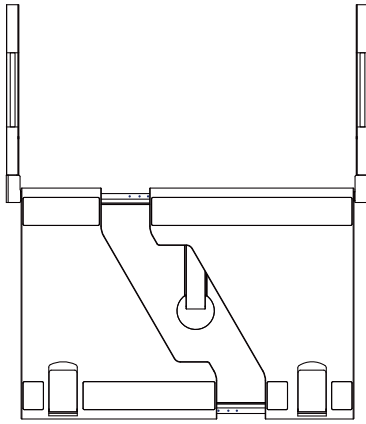
Install the left screen into the bottom storage box of the bracket as shown in the figure

Note: Install into the bottom storage box of the bracket when storing

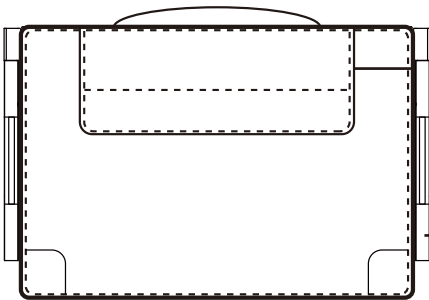
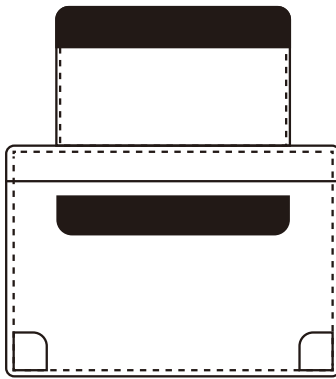


1. Rotate the support rod clockwise 90 degrees in a horizontal direction for storage
2. Be careful not to scratch the screen when rotating the spindle supporting the screen

Note: Pay attention to the storage order of the left screen and the right screen to avoid damaging the screen.



Store the product in the leather case



Be careful not to scratch the screen when rotating the spindle supporting the screen

# Audio Settings

---

## 1. Switch settings of Windows 10 / Windows 11 computer end output

1.1 Right click the loudspeaker icon down-right

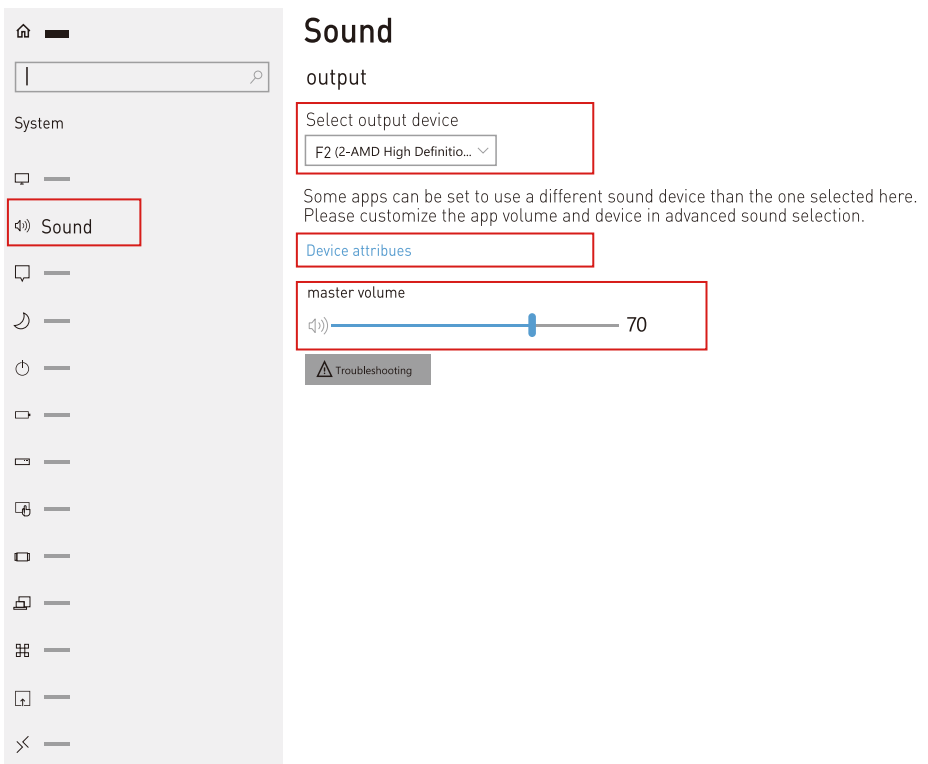


1.2 Select "switch on sound" in pop-up dialog box

1.3 Left click "turn on sound settings" and pop-up the box as provided, Here users can set about sound;

Here users can set about sound

1. Master volume;
2. Select output device: (F2-R/speaker);
3. Device attributes.

A screenshot of the Windows Settings application. The left sidebar shows the 'Sound' option highlighted with a red box. The main content area is titled 'Sound' and 'output'. It features a 'Select output device' dropdown menu with 'F2 (2-AMD High Definitio...' selected, highlighted by a red box. Below this is a text box stating: 'Some apps can be set to use a different sound device than the one selected here. Please customize the app volume and device in advanced sound selection.' A blue link 'Device attributes' is highlighted with a red box. Below that is a 'master volume' slider set to 70, also highlighted with a red box. At the bottom, there is a 'Troubleshooting' button with a warning icon.

# Audio Settings

## 2. Settings of MACOS Computer End Sound

2.1. Switch settings of MAC computer end sound output

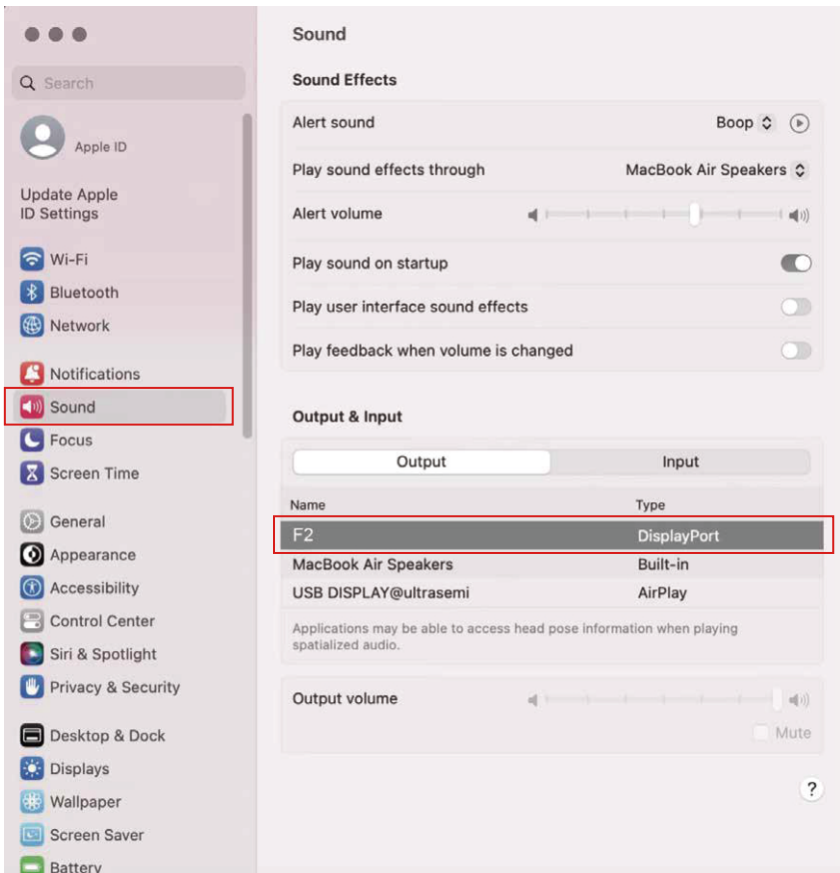
2.2. Click computer's "settings" APP



2.3. Select "sound" in dialog box and pop-up as provided:

Click "output", users can do settings about sound;

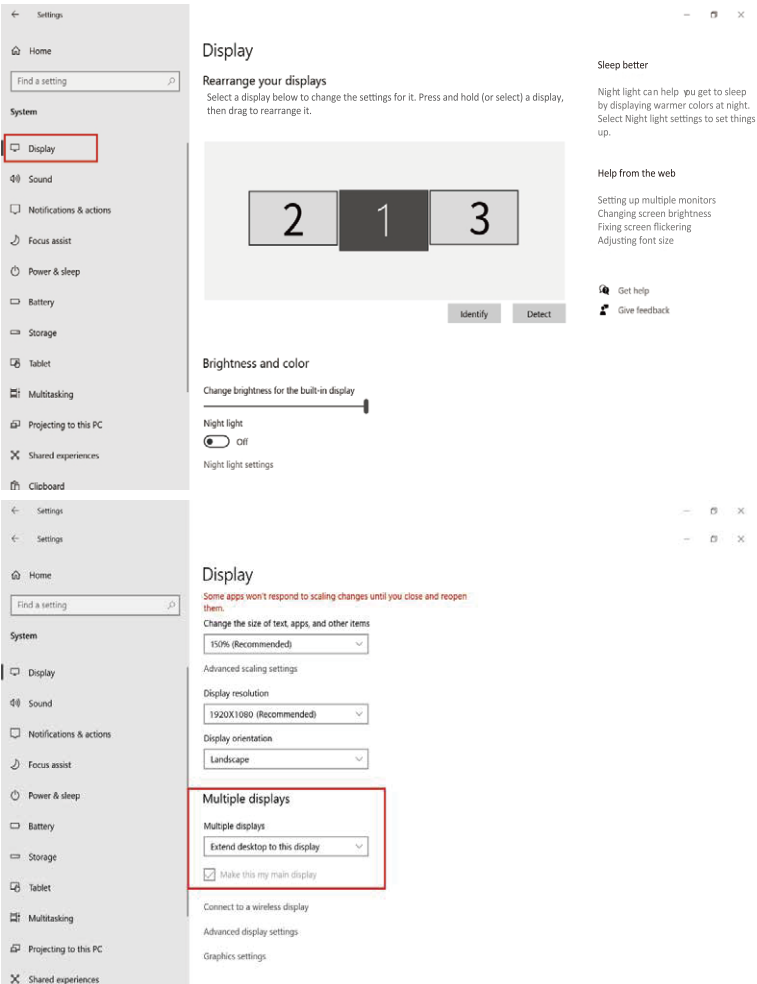
Select output device: { F2 /speaker}



# Display Settings for Windows 10/Windows 11/MacOS

## 1. Windows 10 / Windows 11 Display Settings

1.1 Right-click a blank area of the desktop. Select 'Display Settings' from the pop-up dialogue box. Left-click "Display Settings" to open the settings dialogue box, as shown.



1.2 Under the "Rearrange displays" section, drag and drop each display to rearrange them according to their physical layout on your desktop. Scroll down to the bottom of the page to further configure the display for extended or mirrored mode.

NOTE: When installing vertically, the display direction needs to be rotated (right screen 270 degrees, left screen 90 degrees) in the computer display settings.

# Display Settings for Windows 10/Windows 11/MacOS

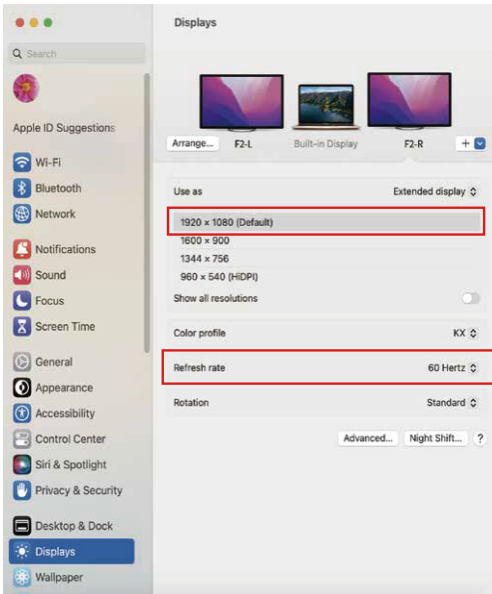
## 2. MacOS 13 Ventura Display Settings

2.1 Enter the “System Preferences” menu



2.2 Configure your monitor

In this menu, you can set the resolution and mirror/expand the display you want.



2.3 Arrange Displays

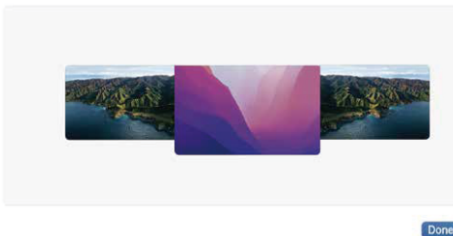
To rearrange displays, drag them to the desired position.

To mirror displays, hold Option key while dragging them on top of each other.

To relocate the menu bar, drag it to a different display.

### Arrange Displays

To rearrange displays, drag them to the desired position. To mirror displays, hold Option while dragging them on top of each other. To relocate the menu bar, drag it to a different display.

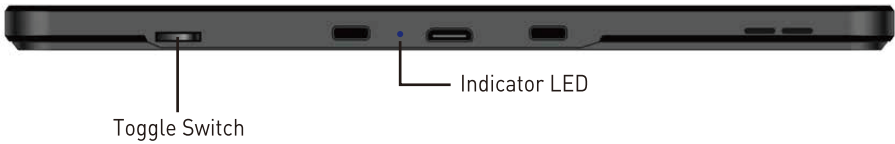


Note: When installing vertically, the display direction needs to be rotated (right screen vertical flip, left screen vertical) in the computer display settings.

# OSD Settings

## 1. Button Operation Guide

### Key Definition



Classification	Key Function	Remark
Before entering the menu	Click to enter the menu interface	/
	Press and hold for 3 seconds to turn off the screen	/
	Toggle up to increase volume	“+”
	Scroll down to decrease the volume	“-”
After entering the menu	Click to enter the corresponding column	Confirm
	Long press for 2 seconds to exit the selected screen	Return
	Scroll up/down to select the corresponding column	Choose

## 2. Transportation, Storage and Use Requirements

To ensure the long-term use of this product and prevent accidental occurrences such as an electric shock, fire, etc., please read all usage requirements and operating procedures before using this product and comply with the following requirements:

1. Please use the original cable.



2. Remove the protective film on the surface of the screens before use.
3. The power input required by this product is 5V-20V +/-2V, and it required sustained operating power is  $\geq 10W$ . (If the power supply provided by the laptops is not within this range, please use an external power supply.)
4. Avoid excessive humidity and dust build-up to avoid any sort of failure, causing circuit corrosion.
5. Do not squeeze or apply exceeding force to the surface of the screens.
6. Avoid using sharp objects on the screen surface.
7. This product is suitable for general commercial and household use in an optimal temperature environment between  $-20^{\circ}C$  and  $60^{\circ}C$ .
8. Disconnect any power cables when the device is not in use.
9. The maximum folding angle of the F2 is 360 degrees. When at the maximum angle, the screen should not be further bent or squeezed to avoid damage.



**MAXFREE**

— [www.maxfree.com](http://www.maxfree.com) —

— [www.maxfreeofficial.com](http://www.maxfreeofficial.com) —

The manufacturer reserves the right to make changes to the product  
and update this manual at any time.

Any question, please contact: [support@maxfree.com](mailto:support@maxfree.com)