



F1 USER'S GUIDE



Pay attention to the switching sequence of the screen

1. Ensure that all connected cables are secure and not loose before usage.
2. The continuous power required for this product is 10W. Please confirm that the Type-C or Type-A port of the laptop can withstand 10W (5V/2A), if not, the brightness of the product will be reduced to maintain the function.

Windows

Mac

Contents

Product Contents	1
Installation and Storage	
1. Method of Unfolding	2
2. Installing the Screen	2
3. Various Applications of Dual Screens	3
4. Connect F1 with Laptop	4
5. Connect F1 with Mobile Phone	5
6. Connect F1 with Other Devices	5
7. Disassemble the Screen	6
8. Storage of the F1	7
Audio Settings	
1. Switch Settings of Windows 10 / Windows 11 Computer End Output	8
2. Settings of MacOS Computer End Sound	9
Display Settings for Windows 10/Windows 11/MacOS	
1. Windows 10 / Windows 11 Display Settings	10
2. MacOS 13 Ventura Display Settings	11
OSD Settings	
1. Button Operation Guide	12
2. Transportation, Storage and Use Requirements	13

Product Contents

F1



Key Definition

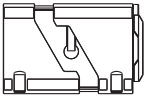


Toggle Switch

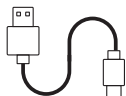
Indicator LED

The red light is on when charging; the blue light is on when there is data output.

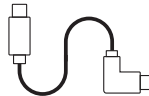
Accessories



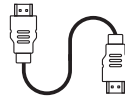
F1



Type-A to Type-C



Type-C



HDMI to MINI HDMI



BAG

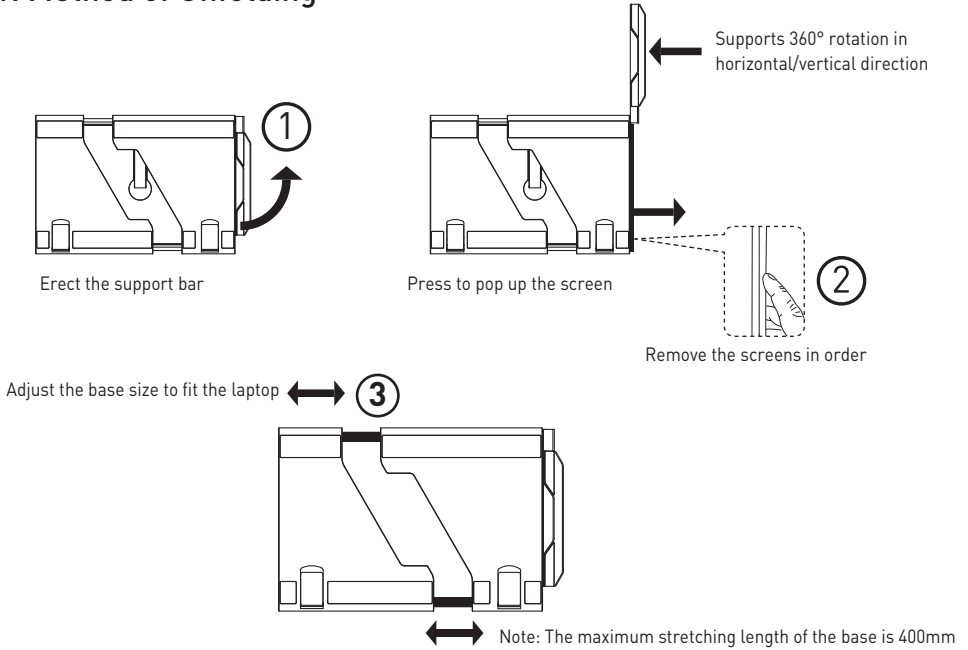
Carefully check package contents, if anything is missing or damaged, please contact Maxfree customer service for support: support@maxfree.com

Product Specifications

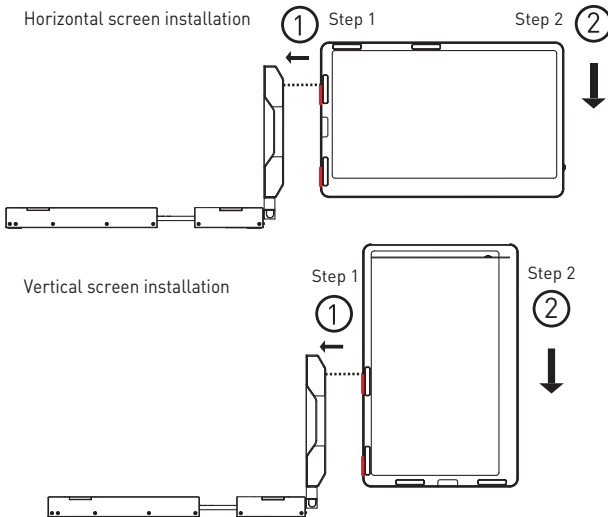
Product Model:	F1	Product Weight:	1.81 KG	Product Size:	385.5x248.8x20.7MM
Resolution:	1920*1080P	Panel Type:	IPS	Loud Speaker:	2 PCS
TYPE-C Input:	5-20V/5A	TYPE-C Output:	5-20V/4.25A	Refresh Rate:	60Hz

Installation and Storage

1. Method of Unfolding

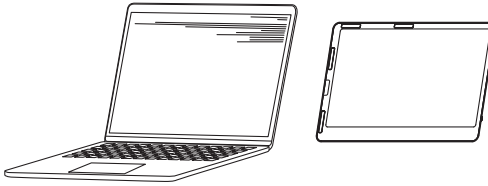
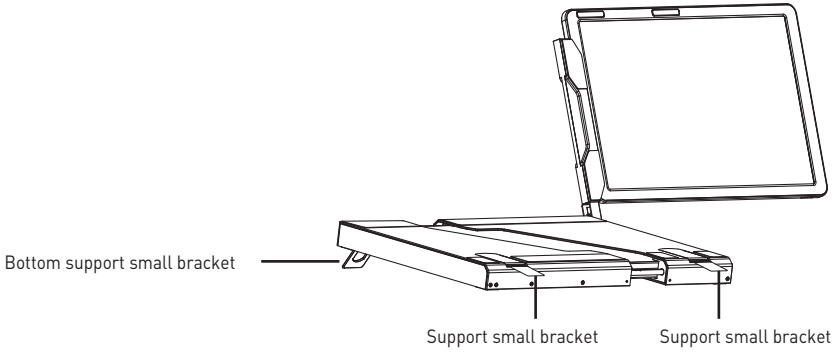


2. Installing the screen



Step 1: Align the card slot of the screen with the buckle in the shaft, and press it in the direction shown in the figure
Step 2: Press the screen in the direction shown in the figure until the screen snaps into place

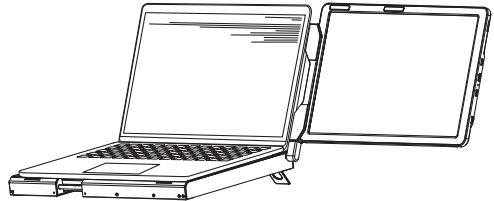
3. Various Applications of Dual Screens



Detached Mode



Portrait Display

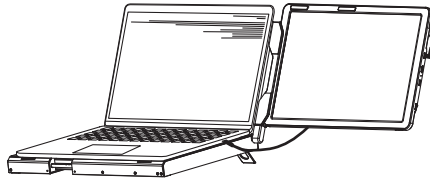


Landscape Display

4. Connect F1 with Laptop

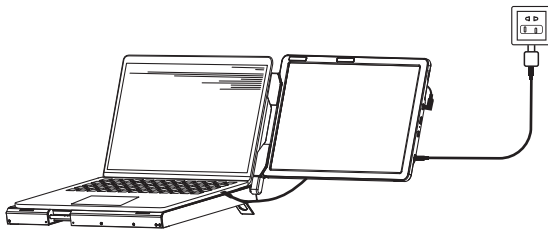
Connect F1 to your laptop and check that your laptop has a Type-C, Type-A or HDMI port that can provide 5V/2A power.

Connect F1 to your laptop through F1's Type-C and MINI HDMI port, following the options below:

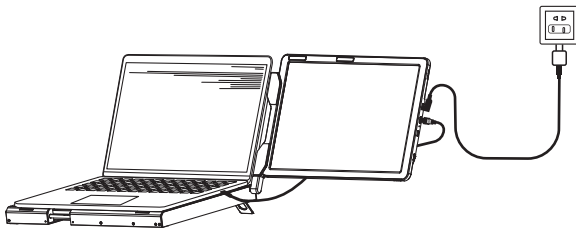


Connect to F1 through the Type-C interface of the notebook

Option 1: If your laptop has one Type-C port (full function port), and the Type-C output port of the laptop can provide more than 5V/2A power supply, directly connect the F1 and the laptop with Type-C cable.



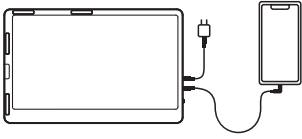
Option 2: If your laptop has one Type-C port (full function port), and your laptop Type-C outlet cannot provide more than 5V/2A power supply or the display has no signal/the signal is unstable after connection, then you need to connect an external 5V/2A adapter to power F1. Then connect the F1 to the laptop with Type-C cable.



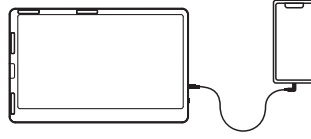
Connect to F1 through the HDMI interface of the notebook

Solution 3: If your laptop does not have a Type-C port, you can use an HDMI-mini HDMI cable to connect the F1 screen to the HDMI port of the laptop, and then connect the 5V/2A adapter to power F1 Screen.

5. Connect F1 with Mobile Phone



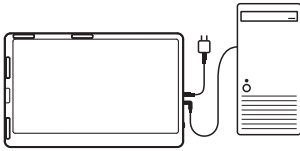
Mobile phone connection mode
(External power needed)



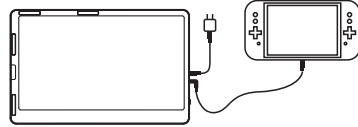
One Type-C cable to connect to the mobile phone

6. Connect F1 with Other Devices

Connect the F1 to the desk-top computer host, switch, mini PC, or set-top box (the screen needs an external power supply)

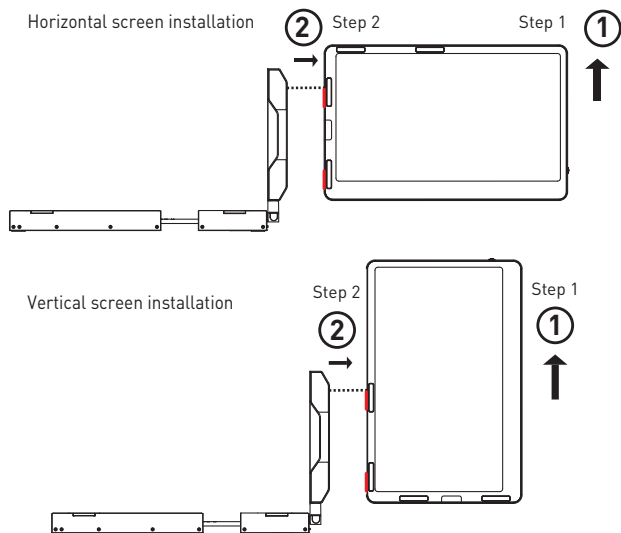


Desk-top computer connection mode
(External Type-c power)



Switch connection mode
(External Type-c power)

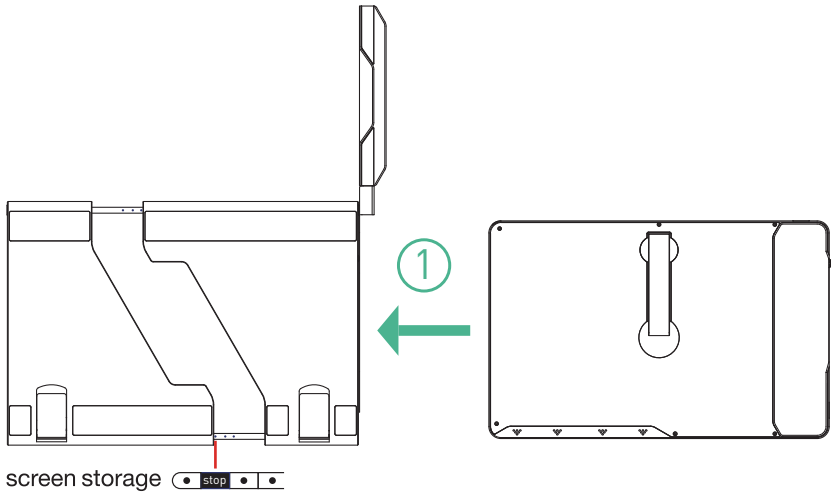
7. Disassemble the Screen



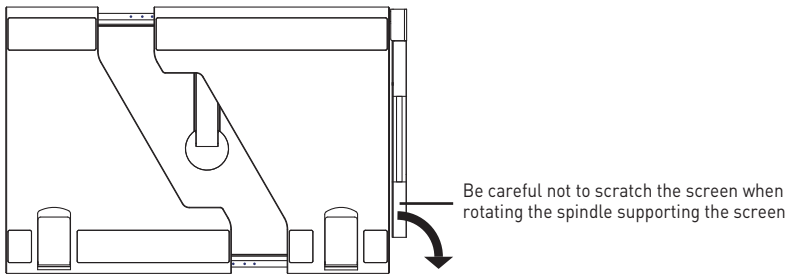
Step 1: Push up the screen in the direction shown in the figure

Step 2: Pull the screen out from the buckle of the hinge according to the direction shown in the figure

8. Storage of the F1

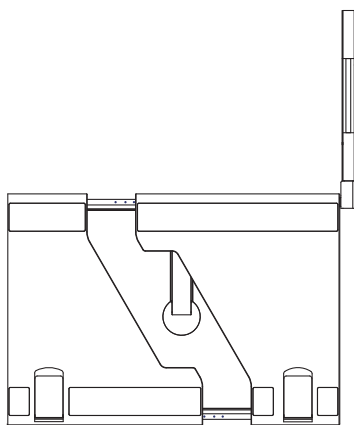


Note: Install into the bottom storage box of the bracket when storing

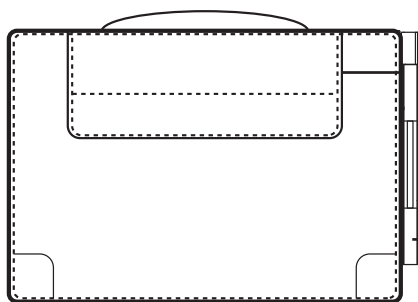
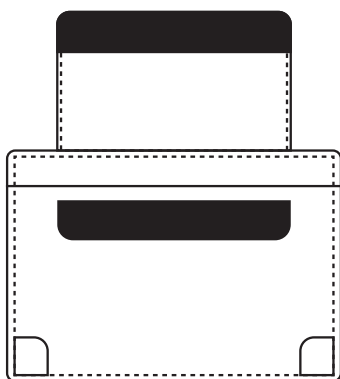


1. Rotate the support rod clockwise 90 degrees in a horizontal direction for storage
2. Be careful not to scratch the screen when rotating the spindle supporting the screen

Note: Pay attention to the storage order of the left screen and the right screen to avoid damaging the screen.



Store the product in the leather case



Be careful not to scratch the screen when rotating the spindle supporting the screen

Audio Settings

1. Switch settings of Windows 10 / Windows 11 computer end output

1.1 Right click the loudspeaker icon down-right



1.2 Select "switch on sound " in pop-up dialog box

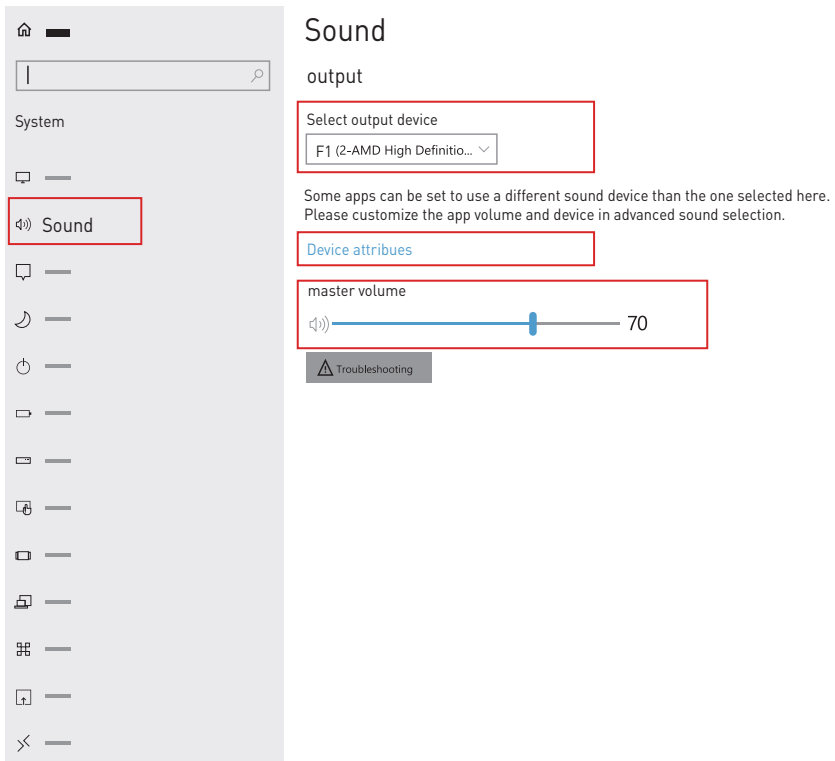
1.3 Left click "turn on sound settings" and pop-up the box as provided,Here users can set about sound;

Here users can set about sound

1. Master volume;

2. Select output device: (F1-R/ Speaker);

3. Device attributes.



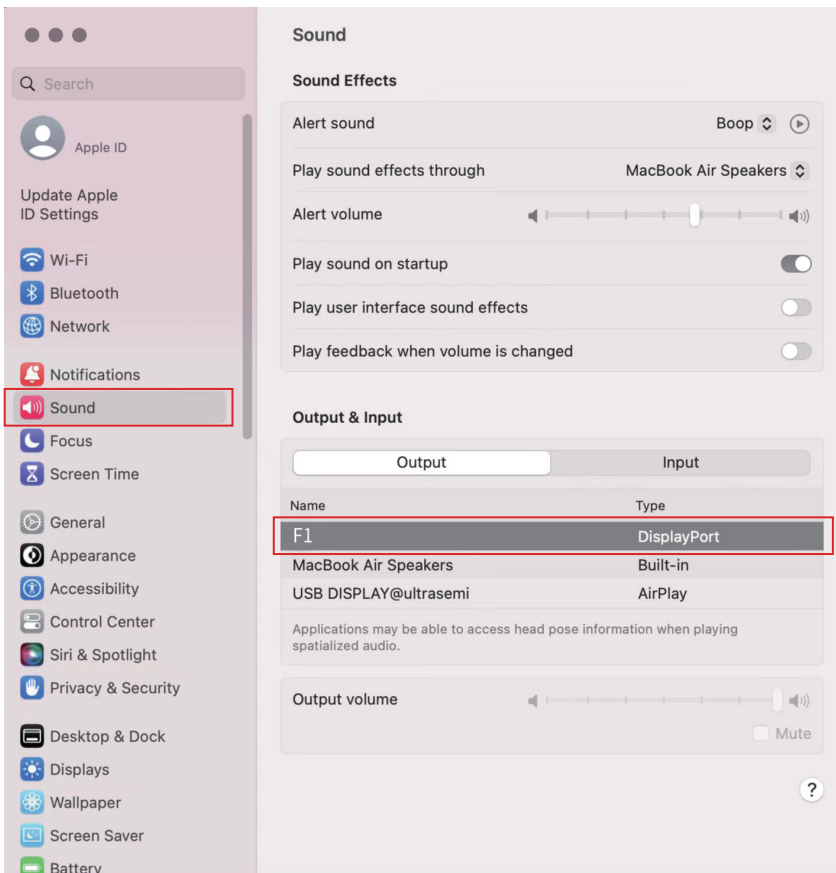
Audio Settings

2. Settings of MacOS Computer End Sound

2.1. Choose Apple menu > System Settings



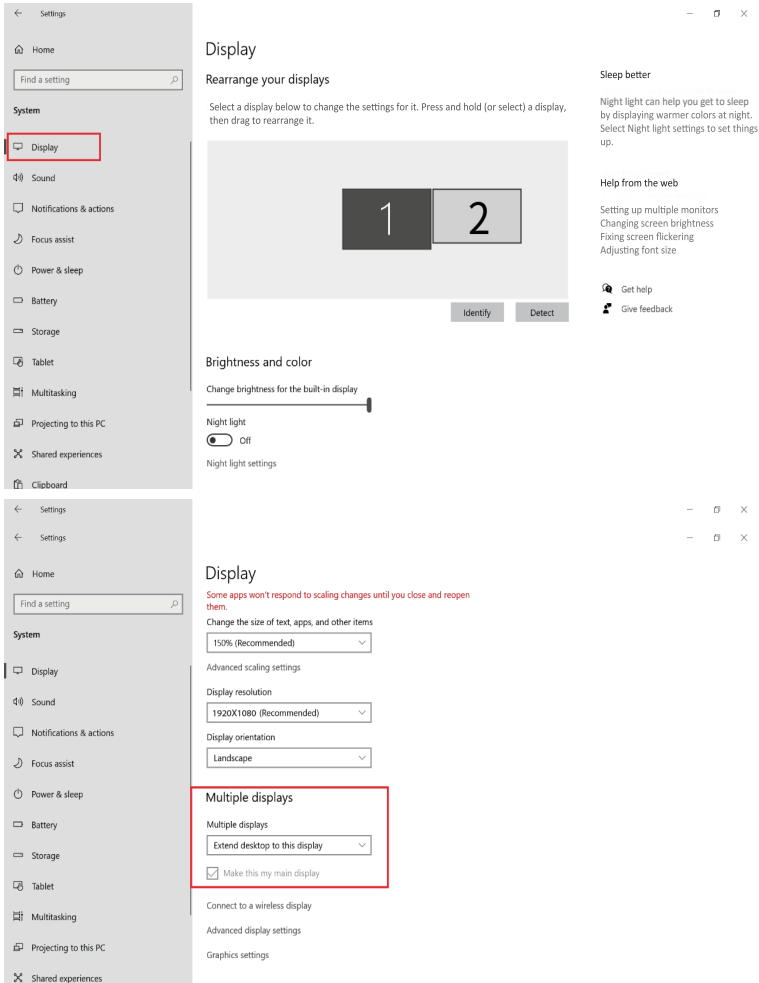
2.2. Click "Output", then select the device you want to use in the list of sound output devices : { F1 / Speaker }



Display Settings for Windows 10/Windows 11/MacOS

1. Windows 10 / Windows 11 Display Settings

1.1 Right-click a blank area of the desktop. Select 'Display Settings' from the pop-up dialogue box. Left-click "Display Settings" to open the settings dialogue box, as shown.



1.2. Under the "Rearrange displays" section, drag and drop each display to rearrange them according to their physical layout on your desktop. Scroll down to the bottom of the page to further configure the display for extended or mirrored mode.

Note: When installing vertically, it is necessary to set the display direction to rotate 270 degrees in the computer's display settings.

Display Settings for Windows 10/Windows 11/MacOS

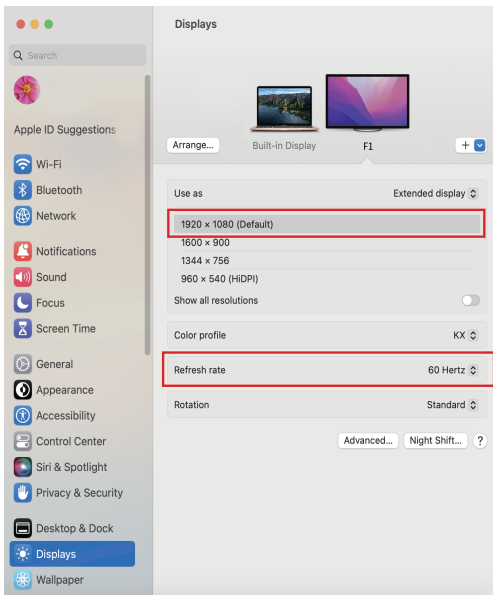
2. MacOS 13 Ventura Display Settings

2.1 Enter the "System Preferences" menu



2.2 Configure your monitor

In this menu, you can set the resolution and mirror/expand the display you want.



2.3 Arrange Displays

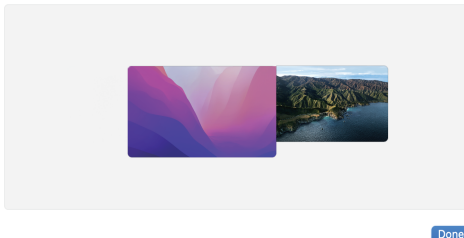
To rearrange displays, drag them to the desired position.

To mirror displays, hold Option key while dragging them on top of each other.

To relocate the menu bar, drag it to a different display.

Arrange Displays

To rearrange displays, drag them to the desired position. To mirror displays, hold Option while dragging them on top of each other. To relocate the menu bar, drag it to a different display.

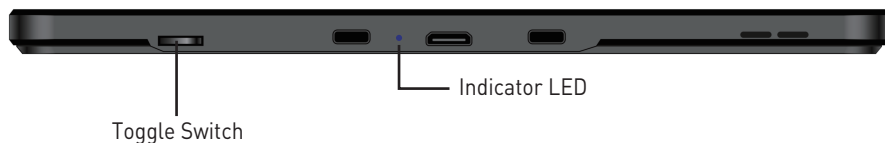


Note: When installing vertically, it is necessary to set the display direction to rotate 270 degrees in the computer's display settings.

OSD Settings

1. Button Operation Guide

Key Definition



Classification	Key Function	Remark
Before entering the menu	Click to enter the menu interface	/
	Press and hold for 3 seconds to turn off the screen	/
	Toggle up to increase volume	"+"
	Scroll down to decrease the volume	"-"
After entering the menu	Click to enter the corresponding column	Confirm
	Long press for 2 seconds to exit the selected screen	Return
	Scroll up/down to select the corresponding column	Choose

2. Transportation, Storage and Use Requirements

To ensure the long-term use of this product and prevent accidental occurrences such as an electric shock, fire, etc., please read all usage requirements and operating procedures before using this product and comply with the following requirements:

1. Please use the original cable.

2. Remove the protective film on the surface of the screens before use.
3. The power input required by this product is 5V-20V +/-2V, and it required sustained operating power is $\geq 10W$. (If the power supply provided by the laptops is not within this range, please use an external power supply.)
4. Avoid excessive humidity and dust build -up to avoid any sort of failure, causing circuit corrosion.
5. Do not squeeze or apply exceeding force to the surface of the screens.
6. Avoid using sharp objects on the screen surface.
7. This product is suitable for general commercial and household use in an optimal temperature environment between $-20^{\circ}C$ and $60^{\circ}C$.
8. Disconnect any power cables when the device is not in use.
9. The maximum folding angle of the F1 is 360 degrees. When at the maximum angle, the screen should not be further bent or squeezed to avoid damage.





MAXFREE

— www.maxfree.com —

— www.maxfreeofficial.com —

The manufacturer reserves the right to make changes to the product
and update this manual at any time.

Any question, please contact: support@maxfree.com