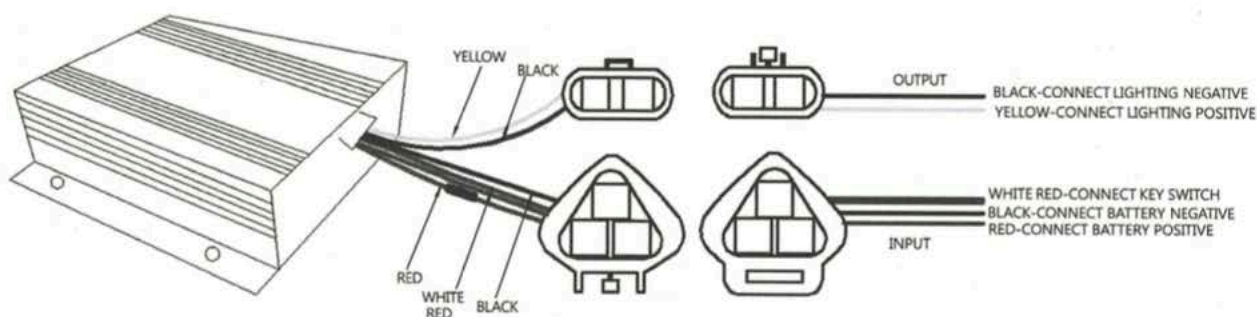




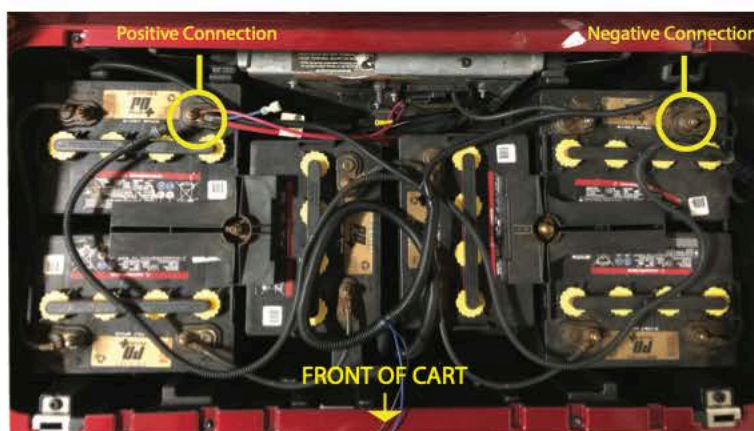
Universal Voltage Reducer Instructions

Please Note: Adapters may need to be purchased to allow for proper attachment to batteries.
(Example: Ring terminals or spade connectors)



1. Switch Golf Cart to TOW mode and turn key switch to OFF position. Disconnect the negative terminal of the golf cart's battery.
2. Our Voltage Reducers are rated for 36 and 48 volt systems. Use a multi-meter to test the voltage of the connection that you will be installing the voltage reducer to. Typically this will be the positive post on the number one battery and the negative post on the last battery in sequence. These can often be identified to finding the main power wire that is supplying power off a positive post on one of the batteries and the main negative wire off a negative post of one of the batteries. Always use a volt-meter to confirm voltage.
3. Find a good, flat metal surface to mount the voltage reducer to with screws and/or double sided tape away from any heat or moving parts. The voltage reducer may reach high temperatures so it is important that this is not installed on any plastic parts of the cart.
4. Using wire strippers, strip the lead wires of the reducer so there is about 0.25" of bare wire showing. (Wires may be pre-stripped).
5. Connect the **RED** wire from the input side of the reducer (underside of reducer has wire layout) to positive terminal of the necessary battery using a ring terminal, spade connector or similar connector.

6. Connect the BLACK wire from the input side of the reducer to the negative terminal of the necessary battery using a ring terminal, spade connector, or similar connector. See photo below of example hook up for six 8 volt batteries. NOTE: Your battery set up may be different, test connections with volt meter before install.



7. If you have a 30amp reducer the red/white wire from the input side of the reducer MUST be connected to a hot wire on the cart key switch. 10amp and 20amp reducers please disregard that wire as it is not necessary for proper functioning of the reducer.

NOTE: it is advised to test voltage reducer output voltage to ensure 12 volts before hooking up accessory items. To test- reconnect negative terminal of golf cart battery and switch cart back to RUN. Test the yellow (positive) and black (negative) wires to ensure 12 volt output. If working properly, disconnect negative terminal on battery and switch back to TOW mode until installation is complete.

8. Connect the **YELLOW** wire from the output side of the reducer to the positive connection on the accessory you are installing using a crimp on butt connector or similar connector. If possible, soldering the wires is recommended to ensure a secure connection.

9. Connect the BLACK wire from the output side of the reducer to the negative wire of the accessory you are installing using a crimp on butt connector or similar connector. If possible, soldering the wires is recommended to ensure a secure connection.

10. Reconnect the negative terminal of the golf cart's battery and switch your cart back to RUN mode.

11. Test output voltage with volt meter to ensure 12 volts before hooking up accessory item.

Club Car Precedent Installation

If you are installing a Precedent Light Kit and you do not have the voltage reducer harness follow the steps below.

1. Install voltage reducer following directions 1-11 above.

2. Disregard the voltage reducer harness installation instructions and directly connect the 12-pin bucket harness connector to the 12-pin sub-harness connector.