



Gusto

MADE IN THE USA!

Instructions For:

***Rear Flip Seat for EZ-GO™ TXT™
Years 1995-2013***

Scan QR Code for video:



**CHECK OUT OUR OTHER
GREAT ACCESSORIES!**



**GOLF CART™
STUFF.com**



Included Parts:



Main Tray



Back Cushion



Bottom Cushion w/ Flip Tray



Footrest



Armrails



Mounting Trees



Down Supports



Footrest Brackets



Footrest Gussets



3/8" x 1" Hex Bolts

3/8" x 1- 1/2" Hex Bolts

3/8" x 2" Hex Bolts

1/4" x 1" Hex Bolts



3/8" x 1-3/4" Carriage Bolts

3/8" x 1" Carriage Bolts



3/8" Flat Washer



3/8" Nylon Washers



3/8" Nylon Lock Nuts

1
Using a 7/16" socket, remove the front backrest cushion and retain the hardware.



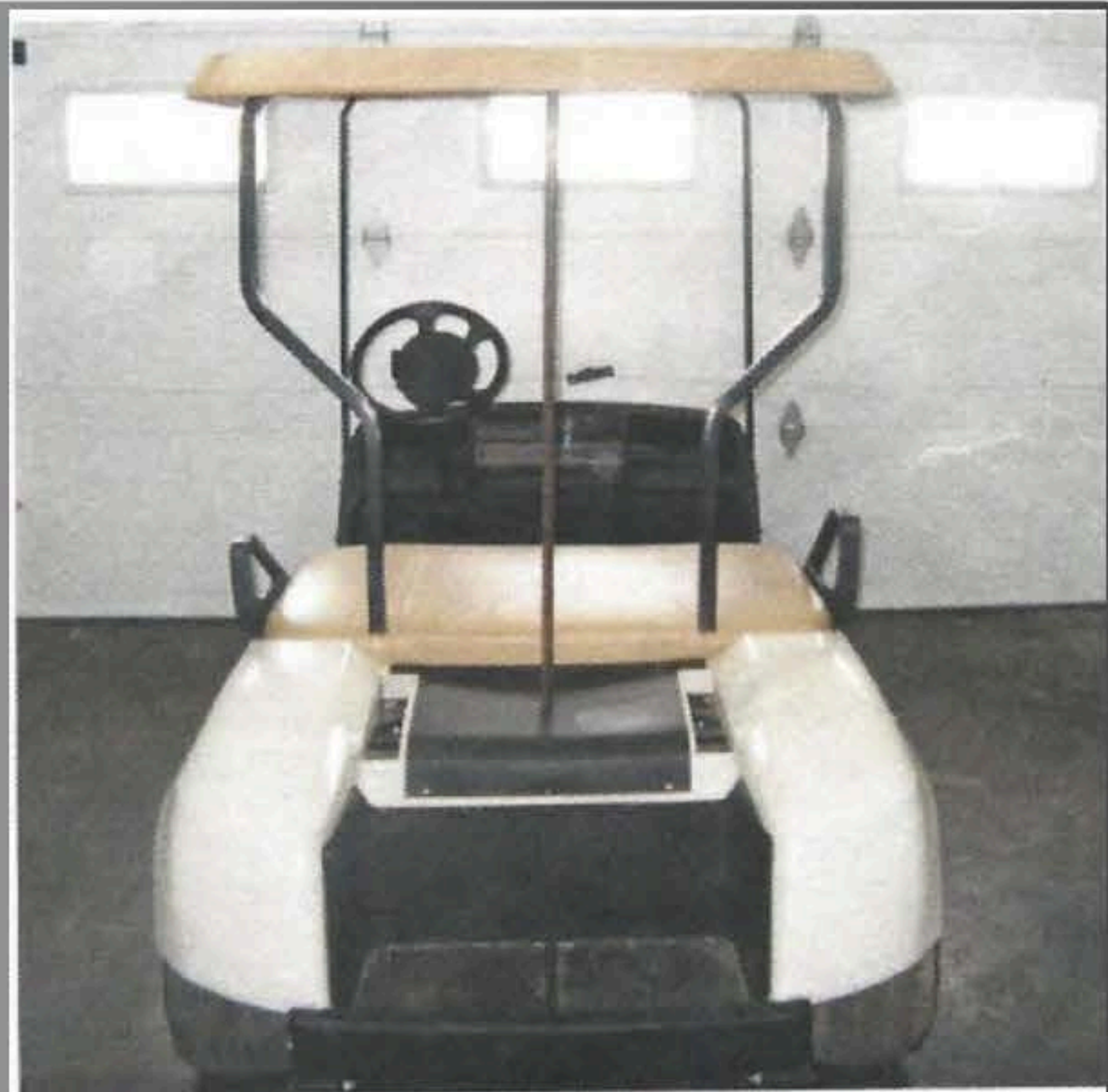
2
Using a 9/16" socket, remove the 4 bolts at the base of the bag rack assembly.



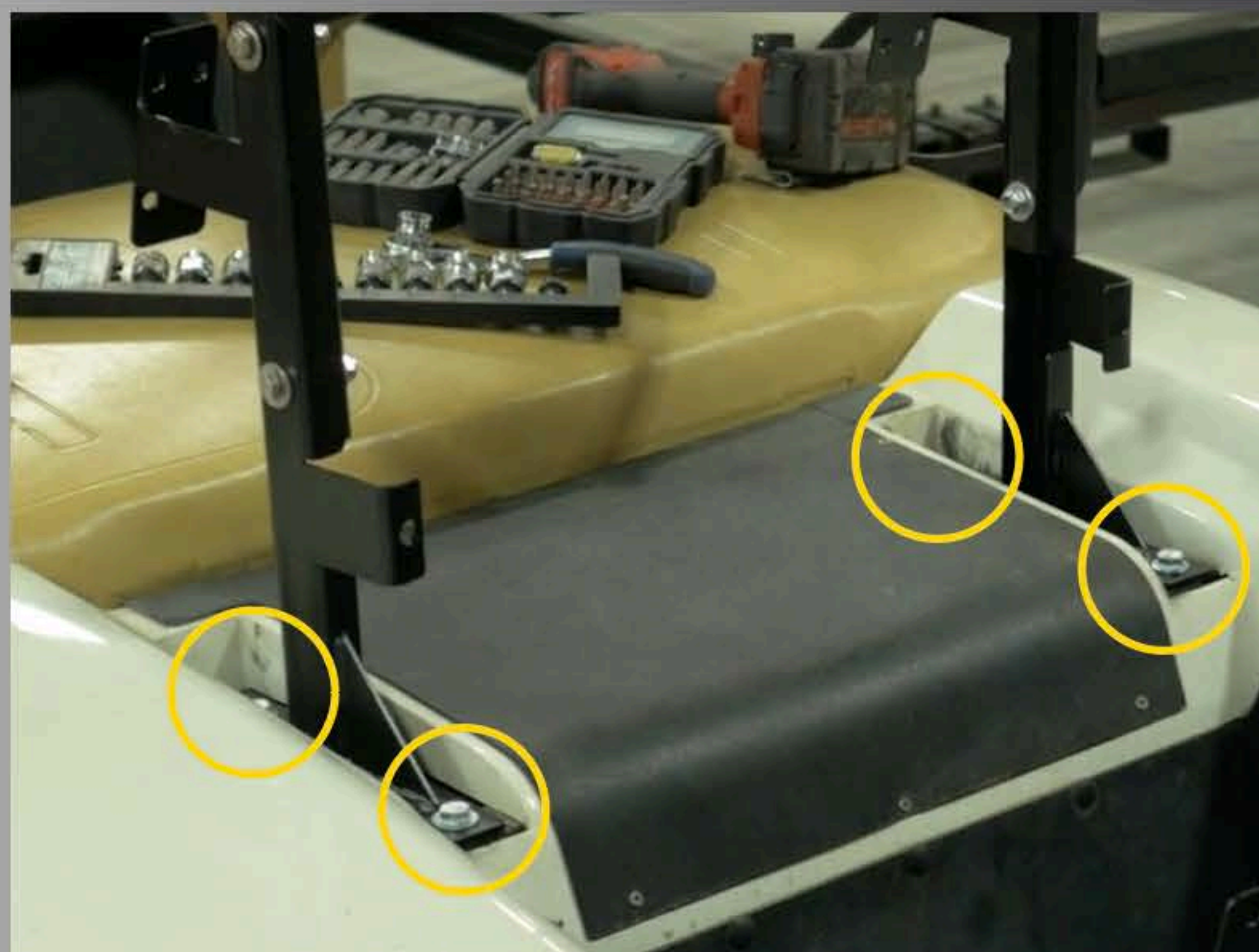
3
Using a 9/16" socket, remove the 4 bolts attaching the roof supports to the bag rack assembly. Retain the hardware.



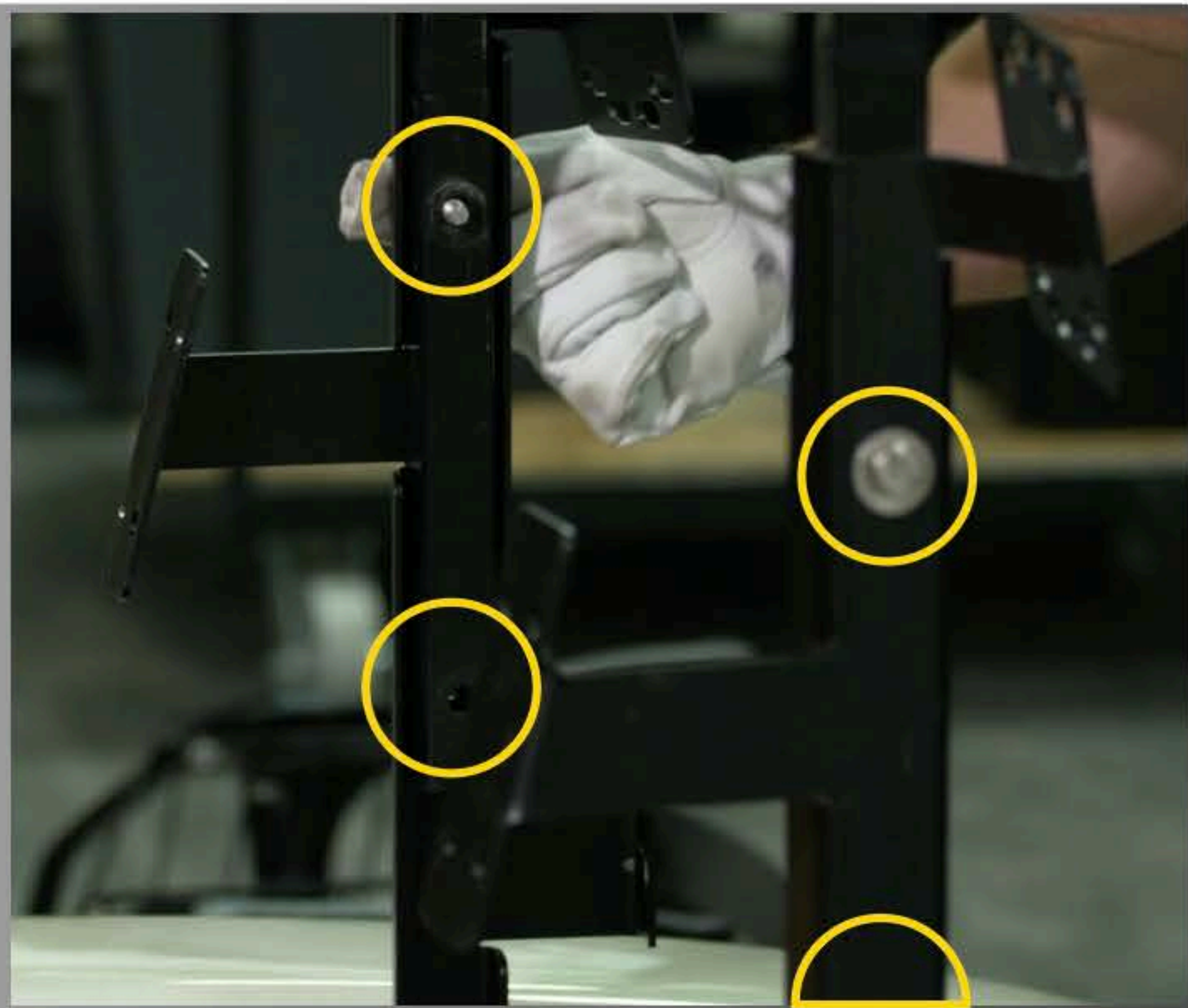
4 Remove the bag rack assembly. Lift roof slightly and move bag rack downward and rearward to remove. Support the roof with a prop.



5 Install new mounting trees where you removed the base of the bag rack assembly in Step 2. Install with channels facing inward. Use 3/8" x 1" Hex Bolts with washers. *Tighten only the rear bolts now.*



6 Set roof supports in the mounting tree channels and align holes. Fasten with hardware removed in Step 3. Leave bolts loose.



Drill out the outer two holes in the bag well using a 3/8" drill bit. Install down supports in bagwell and footrest brackets underneath. Use 3/8" x 1-1/2" Hex Bolts with Nuts and Washers and leave bolts loose.



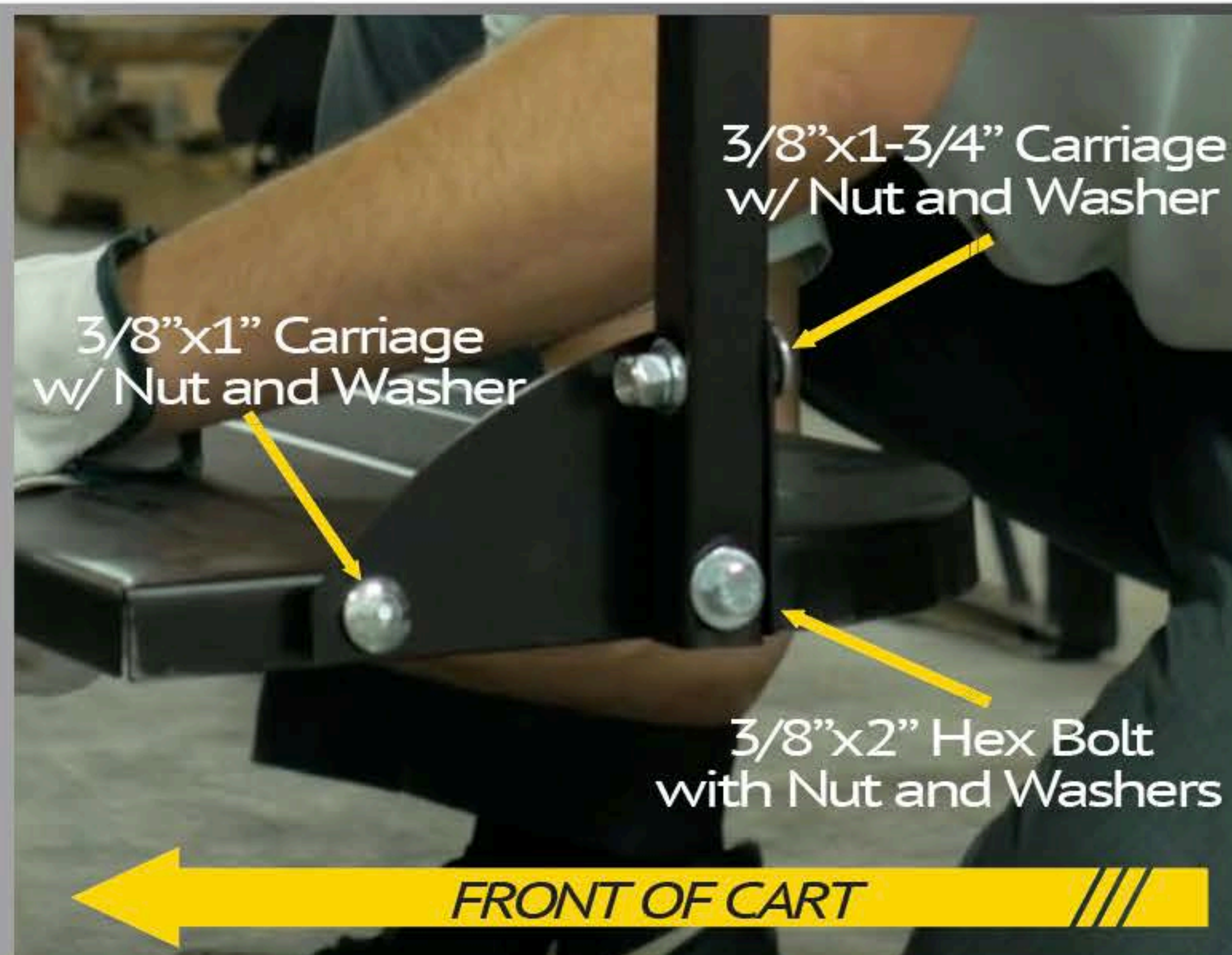
Attach main tray to the mounting tree tabs using 1" Carriage Bolts with Nuts and Washers. Slide the down supports into the slots on the underside of the rear of the main tray and attach with 1" Carriage Bolts with Nuts and Washers. Leave loose.



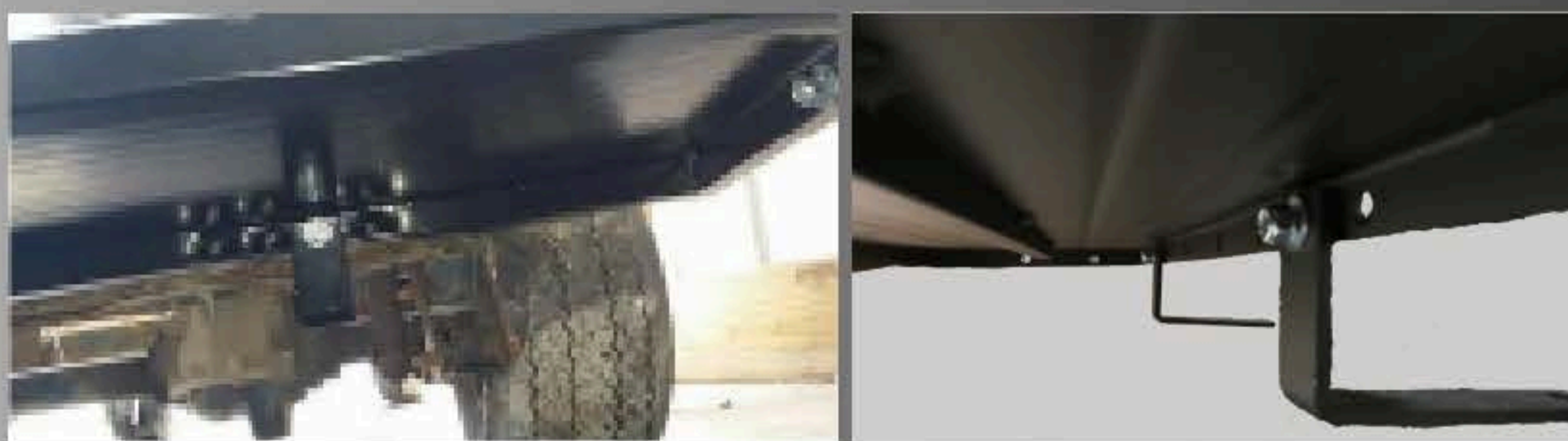
Attach arm rails to the front and rear of seat frame using 1-3/4" Carriage Bolts with Nuts and Washers. Place head of bolt on inside of main tray, nut and washer on outside. Leave bolts loose.



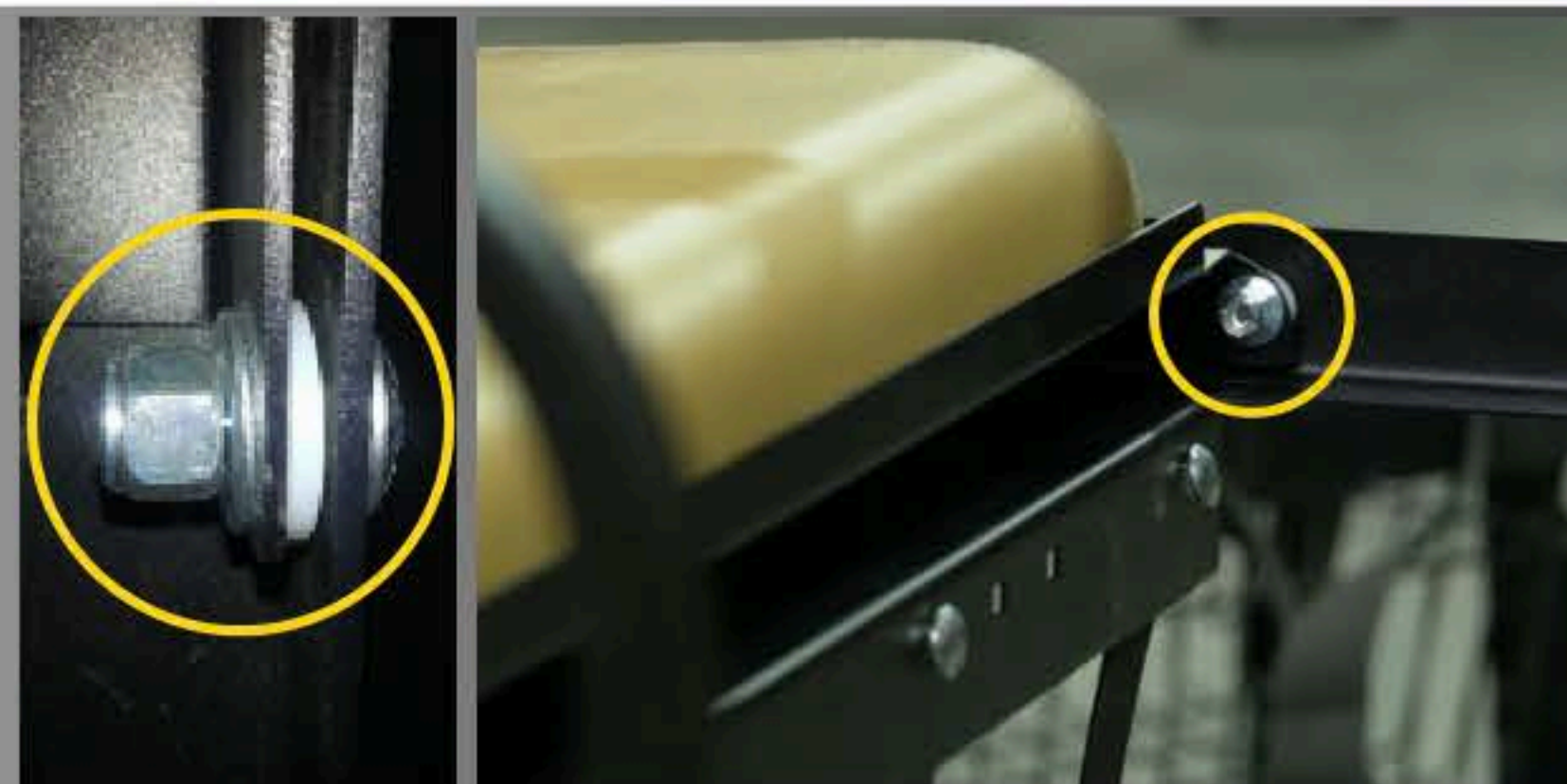
10 Attach the footrest gussets to the bottom of the armrail as shown, being careful to orient correctly. Then attach footrest to gussets and armrail. Leave bolts loose.



11 Attach footrest to the footrest bracket using 3/8" x 1" Hex Bolts with Nuts and Washers.



12 Attach seat cushion with flip frame to the main tray. Using 1" Carriage Bolts, Nuts, and Washers, assemble in the order shown on each side. Be careful not to overtighten.



13 Attach rear backrest cushion to mounting trees using 1/4" x 1" Hex Bolts. Also reattach front backrest cushion reusing bolts from disassembly in Step 1.



★ **AT THIS POINT TIGHTEN ALL BOLTS AND NUTS, STARTING AT BOTTOM** ★
Congratulations, you are done!