

MADJAX

Installation Instructions for:
LED ULTIMATE LIGHT KIT PLUS #02-058
LED LUX LIGHT KIT #02-104

Will fit Yamaha® Drive2®



ITEMS INCLUDED

Front and Rear lights
Wiring harness
Rocker switch
Turn Signal
Brake Switch
Horn
USB port
Converter
Column Cover
RGB Module (02-104)

TOOLS NEEDED

Phillips Head Screw
Driver
Cutting Tool
Sandpaper
Power Drill
Flat Head Screwdriver
8mm Socket

Control box features:

- 30 second turn signal timer
- Eliminates flashers/ Relay
- Brake Lights Automatically turn off after 3 minutes of setting parking brake.

RGB Module controlled by
Happy Light App



iOS 7.0 & Android 4.3

We recommend professional installation. If you choose to not have this product installed by a professional, we highly recommend that you exercise caution, care, and patience when installing this product.



Important: Any modifications made to the wiring harness or lights in this kit will void the warranty. Any damages that occur to the kit or cart will be the sole responsibility of the installer.

ATTENTION: The Instructions for this Ultimate Plus Light Kit & LED LUX Light Kit are identical

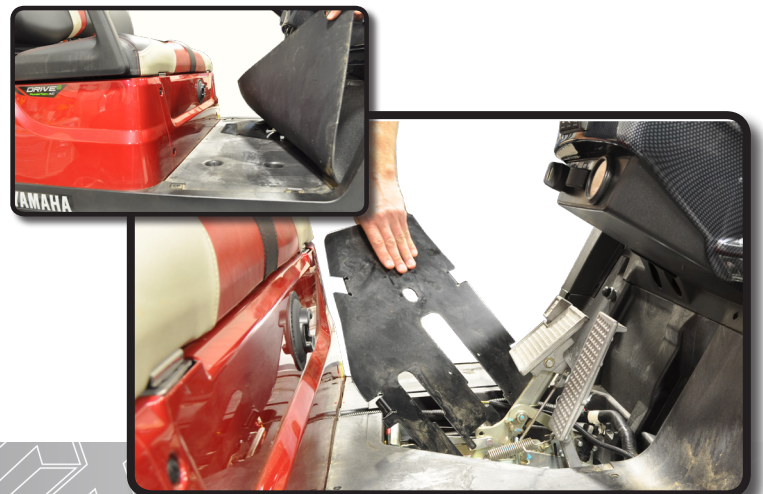
STEP 1

Switch key to OFF position. Place TOW/RUN switch to TOW. It is not required to remove the batteries but you do need to disconnect the main negative.

STEP 2

Remove all plastic rivets from floor mat. Retain hardware. Remove floor mat.

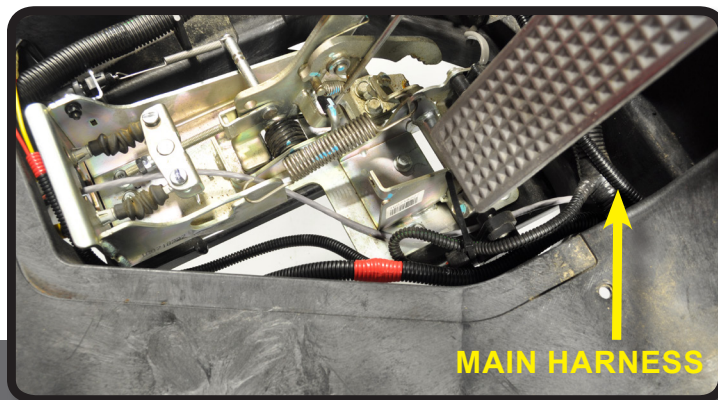
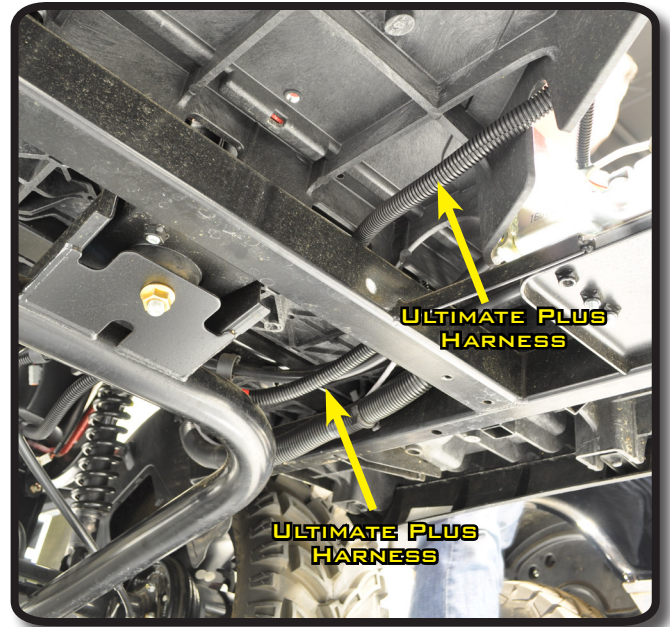
Lift plate from floor to expose pedal assembly.



STEP 3

From the battery compartment, route wiring harness behind the battery pack forward along the brake cables to the brake pedal assembly. Pull headlight wiring from pedal assembly to front of cart. Route wiring harness through dash to mount hazard rocker switch and USB port. Route tail light wiring to the rear of the cart. Loosely secure with wire ties until all lights have been installed.

IMPORTANT: Route wiring harness in such a way to prevent it rubbing against or being pinched by moving parts, such as the suspension.

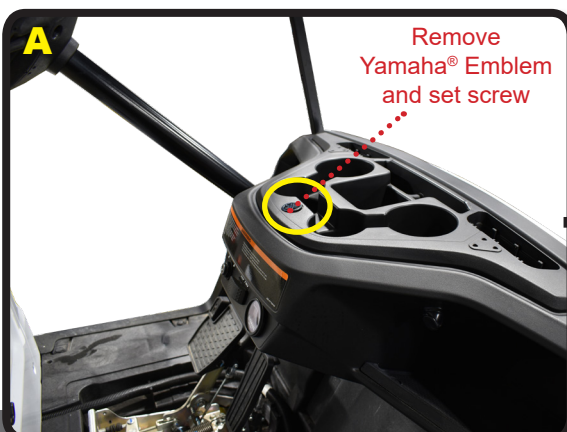


Red plugs should be aligned to passenger side, white plugs for driver's side.

STEP 4A *COWL REMOVAL

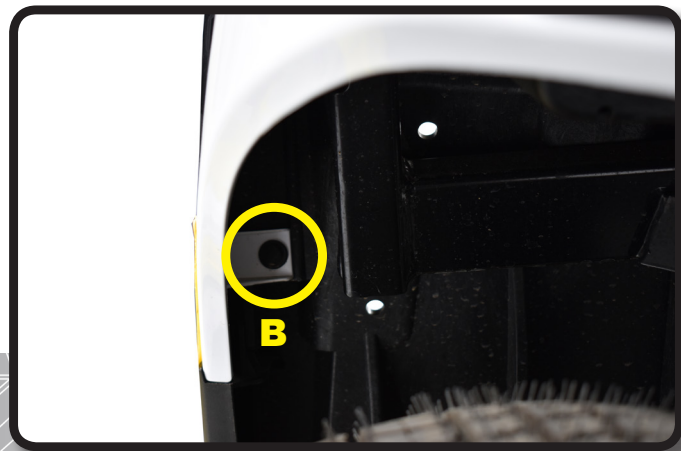
A) Remove Yamaha® Emblem and set screw, then remove cup holder insert and save hardware for later. With the cup holder detached remove the three push rivets in the console.

Note use a small screw driver to push center in to release rivet



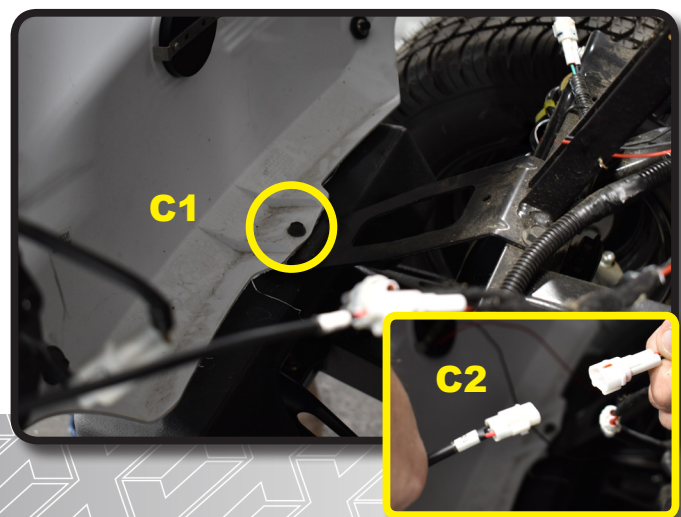
STEP 4B

B) There is one push rivet located in each Front Fender Well. They will need to be removed as well.



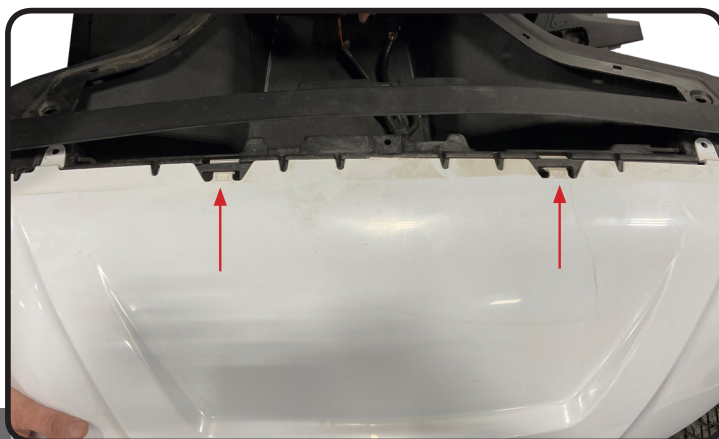
STEP 4C

C1) Remove the final 6mm screw holding the cowl on and then **(C2)** unplug both Headlights. Keep track of all removed hardware, you will need it later.



STEP 5

To remove Factory cowl, use small screw driver to press in and release clips.



STEP 6

Place the cowl on a flat surface and use something to prevent scratching. Then remove factory Headlight push nuts, by *gently* prying them off with needle nose pliers to avoid damage.

Remove Headlight.



STEP 7 *For carts without a pre-cut hole:

Align headlight template to the body contour as shown. Be sure to use alignment references for proper placement. Use a marking pen to trace the inside line.

Next drill a pilot hole so you will have a starting point and then begin cutting. Be sure to drill and make cuts to the inside of the line.

*Use sandpaper to smooth edge.

*Flip template over and repeat process on other side.



STEP 8

Mount headlight through the cutout using supplied push nuts.

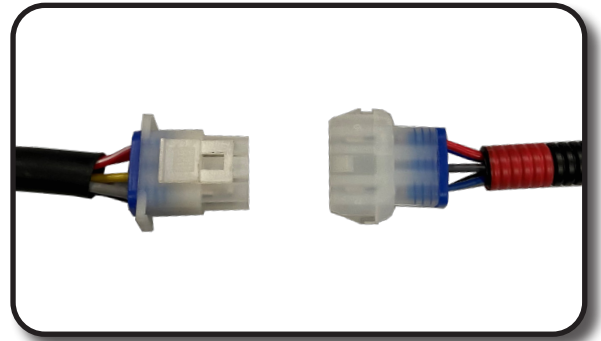
*Repeat process on opposite side.



STEP 9

Plug in 6 pin connector from headlight to 6 pin on harness.

NOTE: Red connector for Passenger side



OPTIONAL RGB MODULE INSTALL FOR 02-104 DRIVE² LUX LIGHT KIT

ATTENTION: For Ultimate Plus Light Kit Instructions (02-058), Skip to Step 10.

To access the features of your RGB Module download the Happy Light App and follow the provided instructions.

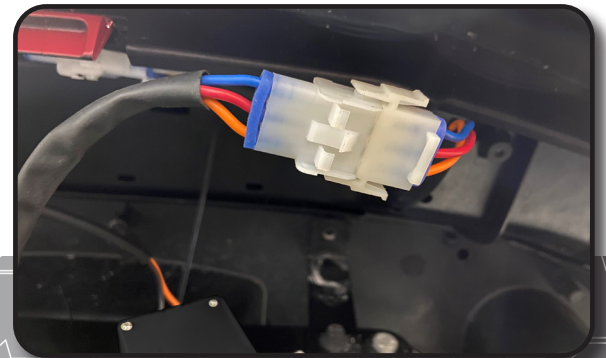
STEP A

At the front of the car connect the 2-Pin connector from RGB Module to the Main Harness.



STEP B

Plug 3 Pin Connector from RGB Module to 3-Pin on Headlight.



STEP C

Connect the 4-Pin connector from Main Harness to 4-Pin Connector on Headlight.



OPTIONAL RGB MODULE INSTALL COMPLETE

STEP 10 *Tail Light Install*

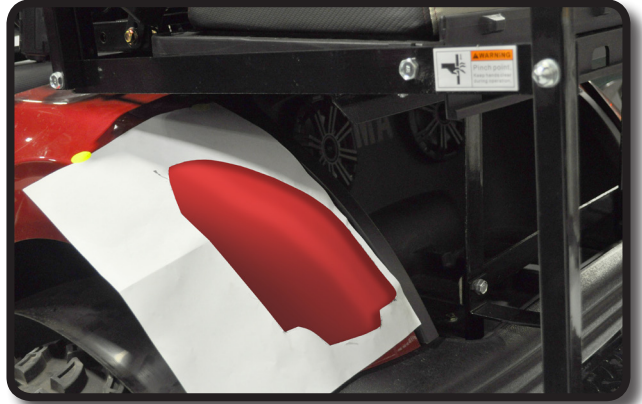
***For carts without a pre-cut hole:**

Align Tail Light template to the body contour as shown. Be sure to use alignment references for proper placement. Use a marking pen to trace the inside line.

Next drill a pilot hole so you will have a starting point and then begin cutting. Be sure to drill and make cuts to the inside of the line.

*Use sandpaper to smooth edge.

*Flip template over and repeat process on other side.

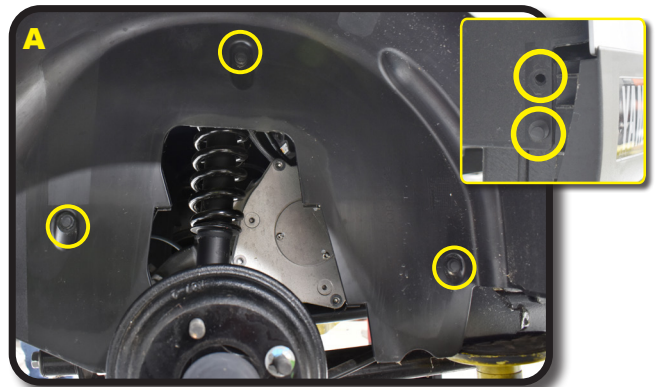


STEP 11

***For carts with factory lights:**

Remove factory tail light hardware. To make tail light removal easier, remove the 5 rivets from inner fender well and retain all.

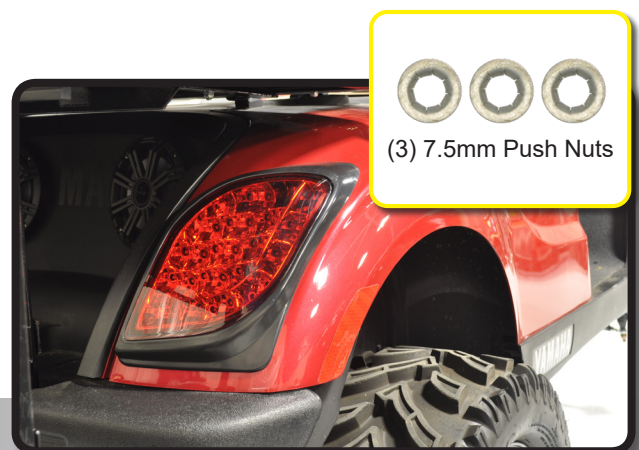
Disconnect factory tail light wiring harness from tail light.



STEP 12

Mount tail light through the cutout using supplied push nuts.

*Repeat process on opposite side.



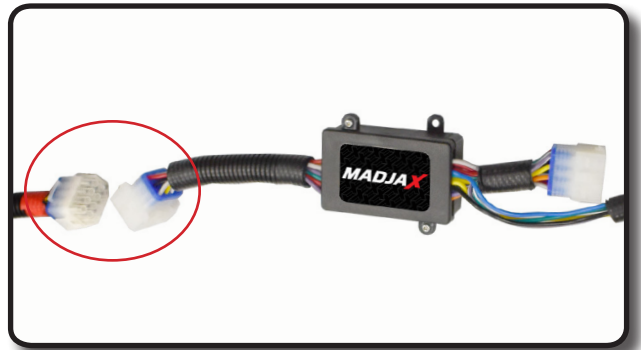
STEP 13

Feed the tail light harness through the back of the cart. Attach rear tail light wire harness as shown. Secure wire with ties.



STEP 14

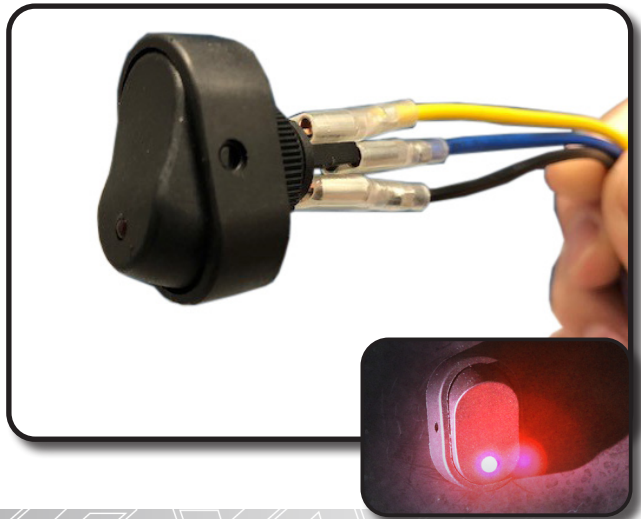
Route 12 pin of main harness towards cupholder. Connect 12 pin of turn signal module to main harness. Secure module in dash panel under cup holder.



STEP 15 *Hazard Switch Install*

Find a desired location on your dash to mount the hazard switch. Ensure the location is free of obstacles and will not affect dash reattachment. Using a 15/32" bit, drill a mounting hole and insert switch into dash. Secure with the ring nut from back of switch.

Reattach wires: Black behind led, Blue on center post, and Yellow on top post.



STEP 16 *USB Charger Install*

Using a 1 1/8" paddle bit, find a desired location on your golf cart dashboard to mount your USB charger. Ensure your location is free of obstacles and will not affect dash reattachment.

Using the supplied ring nut, mount the charger in the to your cart.

Plug the red and black 12 volt accessory connection from the light kit harness to the spade terminals on the back of the charger, red to (+) and black to (-).



Note: Two Options To Mount Brake Switch. Follow Directions For Procedure That Best Fits Your Cart.

STEP 17 *Brake Switch Install*

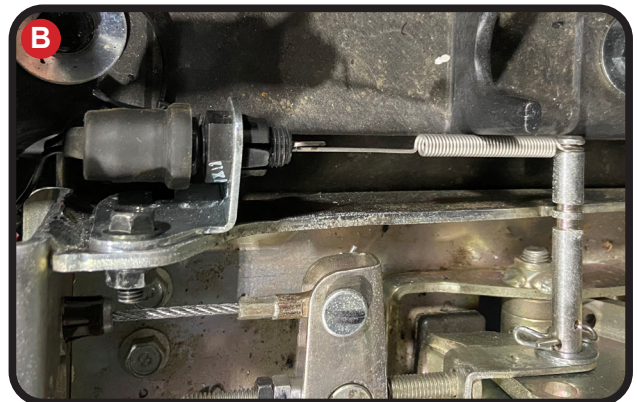
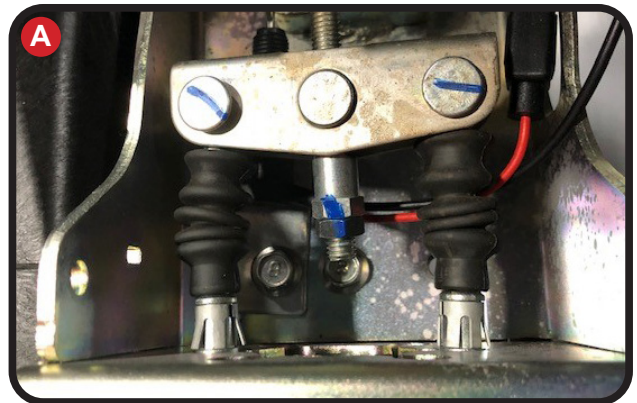
17A) Remove the 1 bolt shown under the brake cable at the rear of the pedal assembly. Align the brake switch bracket over the bolt hole, replace and tighten the bolt. Install the switch in the bracket with the spring toward the front of the cart.

17B) Pedal assembly has a hole to the left of the brake cable using a #6 Bolt Nut & Lock washer secure to assembly. Make sure spring faces forward.

Remove the pin that attaches the brake cable clevis to the pedal. Replace the pin with the longer pin provided in the brake switch kit. Use the provided clip to hold the pin in place. Loop hook on spring over the pin making sure the spring is seated in the groove of the pin.

Adjust the brake switch so that the spring has no slack but the switch is not engaged.

Plug the 2 bullet connectors on the switch into the corresponding bullet connectors on the light kit harness.



STEP 18 *Turn Signal Install*

Mount indicator assembly using clamps provided and tighten. Run indicator harness along steering column and insert harness through dash.



STEP 19

Attach turn signal back cover to turn signal assembly.

Attach column cover to steering column, secure harness in column cover void.

Plug in the 12 pin connector.

Reinstall dashboard using retained hardware.

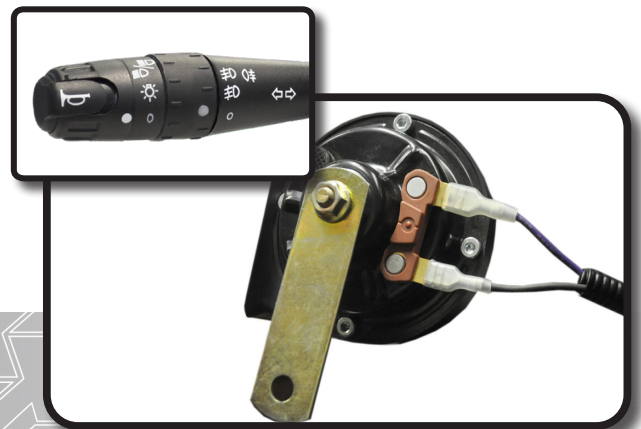


STEP 20

Attach horn to purple and black female spade connectors from front of harness and secure horn to metal framework under front cowl with a self tapping screw.

Note: Horn is operated at the Turn Assembly.

***Wires have no orientation and will work on either post.**



STEP 21 *Auxiliary Switch Feature*

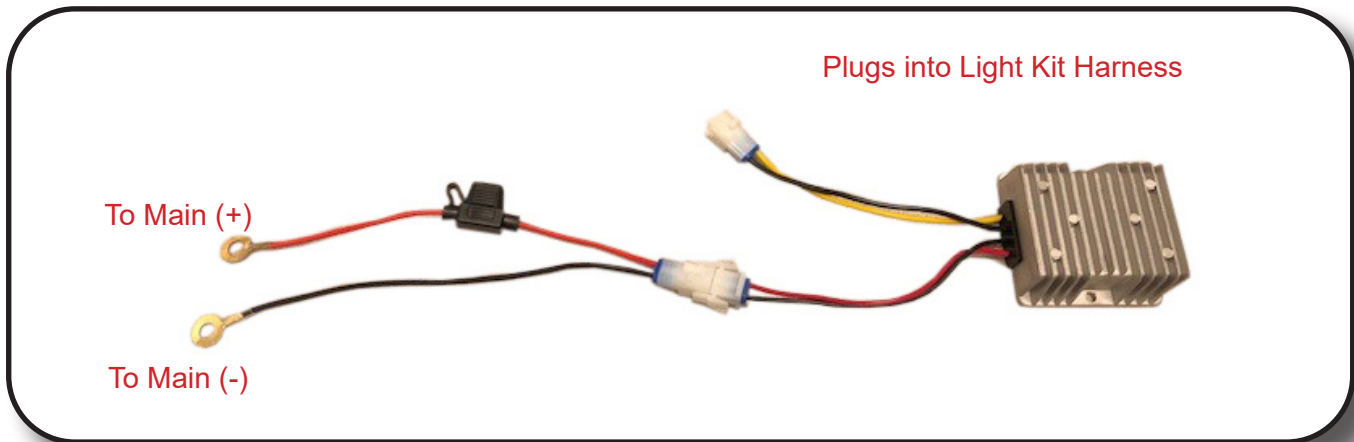
The turn signal handle has a secondary, 2-position rotary switch for auxiliary 12 volt lighting such as fog lights and/or LED light bars. There is one common negative wire and two positive wire connections to run two different auxiliary lights. Additional wiring and lighting not included.

Reinstall cupholder using retained hardware from Step 4.



STEP 22

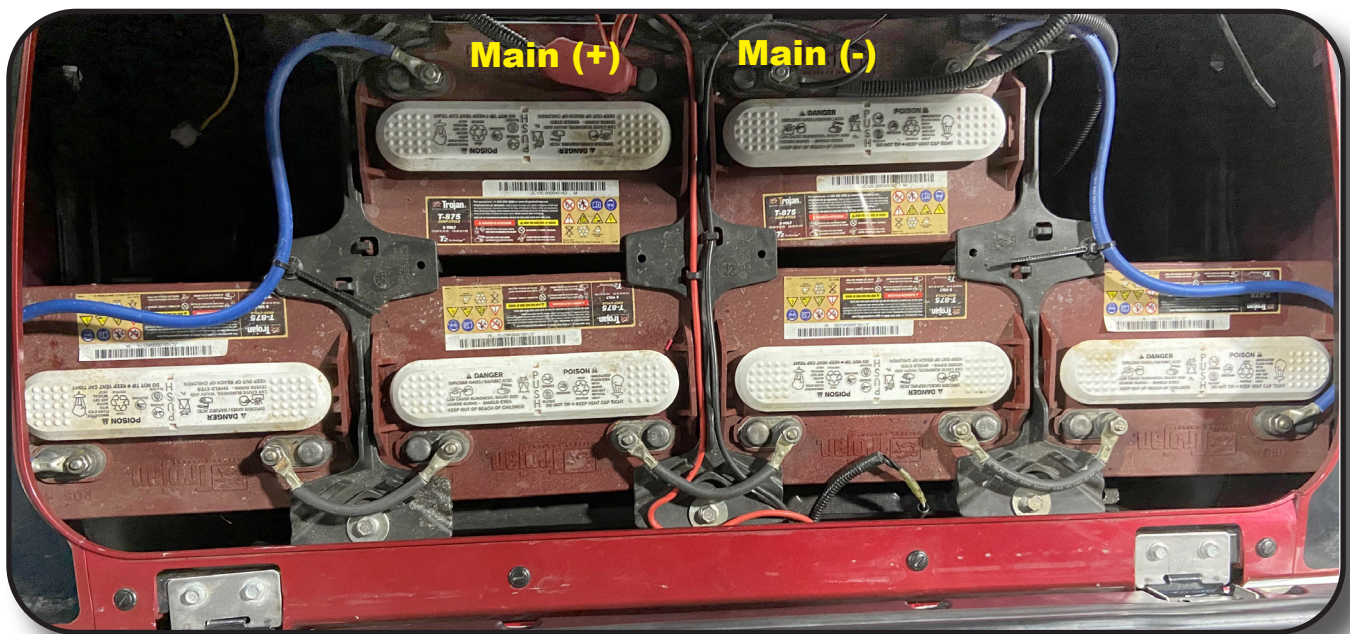
Converter Install



The voltage converter included must be used on all carts electric and gas. Connect the red wire with the fuse to the MAIN positive terminal of the battery pack. Connect the black wire to the MAIN negative terminal of the battery pack and tighten hardware.

Mount the converter to a flat surface under the seat. (Metal area is preferred). Plug the connector with the yellow and black wire into the light kit harness (you will notice a small arc when connecting). Reconnect battery and place run/tow switch to run.

***Use converter on gas carts to prevent Starter Generator voltage spikes that could cause damage to accessories.**



INSTALLATION COMPLETE

E-Z-GO®, TXT®, RXV® and S4® are registered trademarks of Textron Innovations, Inc. Club Car®, Precedent®, DS®, Onward® and Tempo® are registered trademarks of Ingersoll Rand, Inc. Yamaha®, Yamaha® Drive®, Drive2®, G-14®, G-16®, G-19®, G-22® and G-29® are registered trademarks of Yamaha Golf-Car Company. Any reference to Club Car®, E-Z-GO®, or Yamaha® or their associated trademarks, word marks, and products are only for purposes of identifying golf carts with which this Madjax product is compatible. Madjax products are aftermarket parts and are not original equipment parts. Madjax is not connected to, affiliated with, sponsored by, or endorsed by either Textron Innovations, Inc., Ingersoll Rand, Inc., Yamaha Golf Cart Company, or any of their parent or subsidiary companies.