

focuway

USER MANUAL

DASH CAM



Model:T6

—• PLEASE READ THIS BEFORE USING •—

Thank you for choosing the FOCUWAY T6 dash cam, our newest version, released in 2023. It comes with a built-in GPS, so it's important to set the Time Zone and Daylight Saving Time to ensure accurate date and time. Before installation, please refer to our **quick using guide** for setting up the dash cam, as it is a necessary step for you to use this dash cam well.

T6 Working Principle:

The T6 dash cam will automatically power on and start recording when you start the engine, regardless of whether you connect the dash cam to Wi-Fi and the app. However, if you wish to view a live-time feed while driving, you can keep the dash cam connected to Wi-Fi.

For Car Play Users:

It's important to mention that the dash cam's Wi-Fi operates in AP mode. This means that when you connect to the dash cam's Wi-Fi, your phone will not have internet access. Therefore, if you are using CarPlay simultaneously, it will go offline. For this reason, we advise against connecting the dash cam's Wi-Fi while using CarPlay.

If you encounter any issues while using the dash cam, please don't hesitate to contact our after-sales customer service team through Amazon or by sending an email to support@focuway.com.

Quick Troubleshooting:

Can't find FOCUWAY-T6xx Wi-Fi?

[Page:33](#)

Connect the Wi-Fi successfully, but App does not recognize it?

[Page:35](#)

Connect the App successfully, but the App doesn't show live image, just black screen?
Connect the Wi-Fi successfully, but the App is stuck and shows 'Buffering'?

[Page:36](#)

Can't delete the Loop Recording files?

[Page:37](#)

Automatically disconnected while use?

[Page:38](#)

Video play failed?

[Page:38](#)

How to playback the video on your PC?

[Page:30](#)

When insert a new sd card and power on the dash cam, it says 'Card full' ?

[Page:39](#)

CATALOG

Quick using guide	01
1. Functionality checks(wifi&app).....	01
2. Install & wiring t6	06
3. OKCAR app using.....	07
4. Playback & download.....	08
5. GPS & driving route	09
About t6 dash cam	12
1. Package include.....	12
2. Interface and buttons	12
3. Button functions	13
4. Screen display.....	14
5. Icon meaning.....	15
Memory card/ TF card	16
System setting	18
Functions of t6	23
1. Loop recording	23
2. Emergency lock.....	24
3. Protect when parking	26
4. Voice prompt	27
5. Voice control.....	28
6. Export video to computer	30
Trouble shooting.....	31



QUICK USING GUIDE

Due to the time-consuming nature of installation or removal, please follow the Quick Start Guide for **functionality checks** and **initial setup** before **wiring the dash cam**. We strive to streamline this process, retaining essential steps to ensure it doesn't consume too much of your time.

1 FUNCTIONALITY CHECKS

1 Use car charger to power on T6 in your car



You will hear voice prompts from T6: "Starting up!", "Recording start!"

2 Download APP



Search "OKCAR" on google play or App store to download. Or scan the QR code:

OKCAR



ADDITIONAL OPTIONS

Use "viidure" if "OKCAR" not working.
Search "viidure" on Googleplay or App store

2 Connect the T6 to your phone with WiFi

Please note: Regardless of whether you connect the T6 to your phone or not, it will continue to record and lock important evidence normally. How to confirm if the T6 is recording? There is a flashing white dot on the far left of the T6's screen, indicating that it is currently recording.

Scan the bellow QRcode or search “Focuway” on youtube.com to find our channel. Then find the video guide: “**Connect Focuway T6 to your phone: Okcar app using!**”.



FocuWay

@focuway1951 238 subscribers 5 videos

Hello everyone, this is a technical support of



After watching this video, you can skip to page 6
If you prefer not to watch the video, please refer to the visual instructions bellow:

1. Open the OKCAR app and Skip Login



IOS

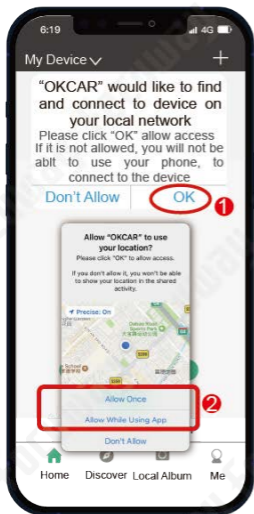


Android

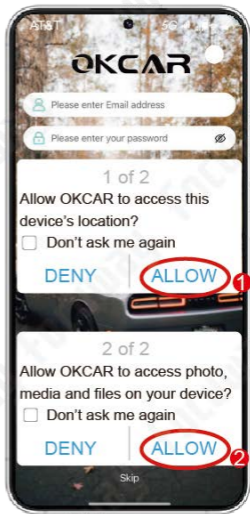


2.Allow necessary permissions

IOS



Android



3.Connect the WiFi of T6 at phone WiFi setting page.



WiFi Name : FOCUWAY-T6***



WiFi Password: 12345678



Settings

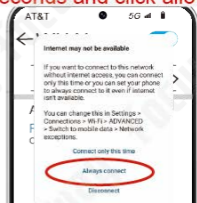


Wait for about 5 seconds until  appears



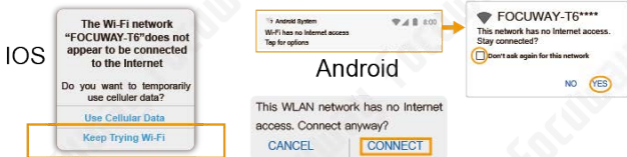
Settings

Wait for about 30 seconds and click allow!!



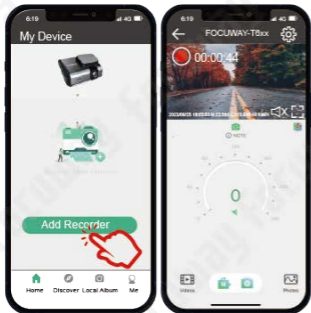
IMPORTANT

Since the FOCUWAY-T6xxx Wi-Fi does not connect to the internet, your device will display a prompt saying "This Wi-Fi has no internet access. Do you want to continue connecting?" Whether you are using an iOS or Android system, please make sure to select "Allow" or "Keep Trying Wi-Fi". Otherwise, your phone will automatically disconnect from the "FOCUWAY-T6xxx" Wi-Fi, preventing you from connecting to the T6 dash cam.

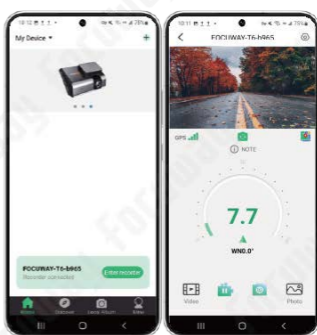


4. Back to OKCAR app, and add dash cam

IOS



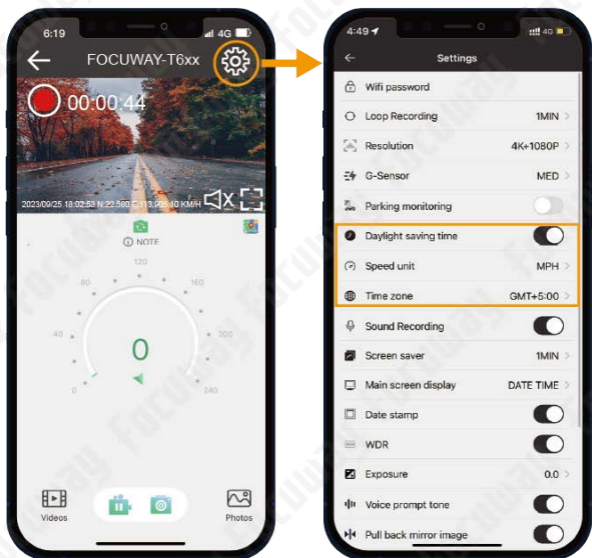
Android



If you encounter any errors during the Wi-Fi connection process, please refer to page 35-37 for troubleshooting solutions. or contact us for help (Email):

support@focuway.com

5.Initial setup: Speed unit , Time zone, Daylight saving time, just set it to your local standard.



We recommend keeping the default settings (excluding the three settings mentioned above). You do not need to make any changes to maintain the T6 dash cam in its optimal operating state.

2 INSTALL & WIRING T6

Functionality check have been completed now, and you can installation and wiring of T6.

Since the installation requires certain skills and detailed instructions, the visual guide may not provide a clear explanation. Please refer to the video guide for installation instructions.

The T6 and T5 use the exact same installation method. Please refer to the installation video for the T5 for guidance.

Search “Focuway” on youtube.com to find our channel, the find the bellow video. Or scan the QR code to get this video



FocuWay

@focuway1951 238 subscribers 5 videos

Hello everyone, this is a technical support ch



How to install and wire Focuway T5 dash cam?

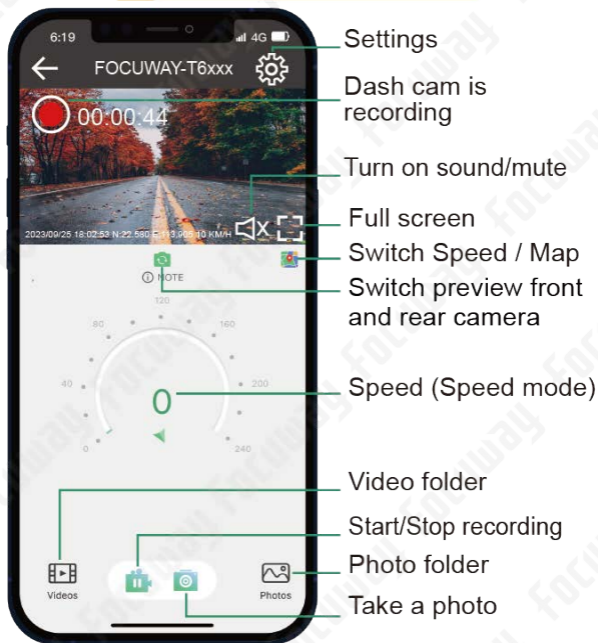


CAUTION

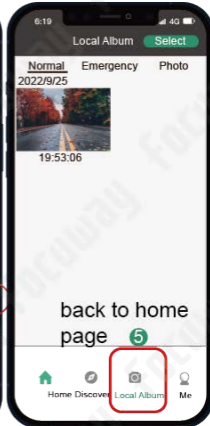
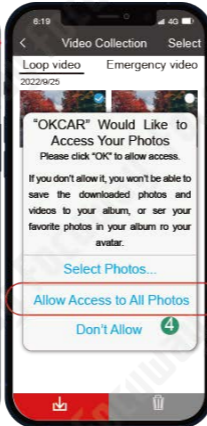
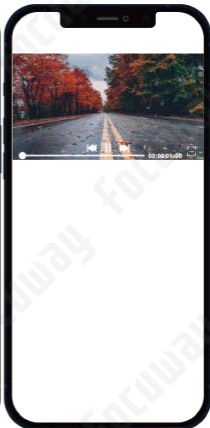
1 Only use FOCUWAY USB car charger otherwise the camera may diswork.

2 If your vehicle has side curtain airbags please be very careful when running cables along your vehicle windows, ensure you are not running cables past any of the airbags as this can prevent the airbags from deploying.

3 OKCAR APP USING



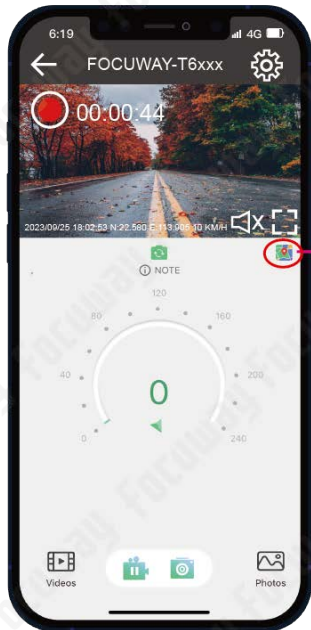
4 PLAYBACK & DOWNLOAD



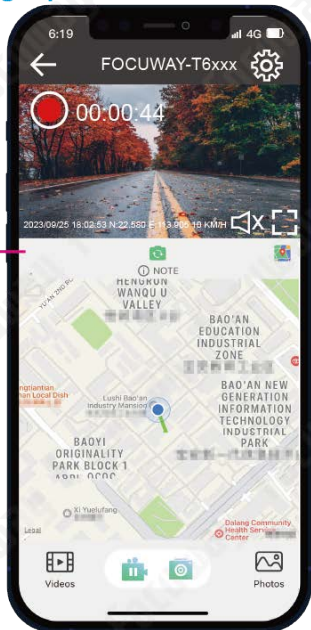
5 GPS & DRIVING ROUTE

Please note: GPS signals may not be received in indoor parking areas or tunnels.

1. Real-time GPS tracking: speed and location



Real-time Speed

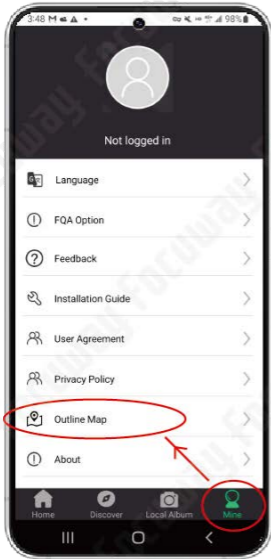


Real-time location (IOS)

For Android phone:

If you are using an Android phone, you need to follow

the steps shown in the diagram on the right to import the map when using it for the **first time**. This will enable the real-time location display feature.



Please disconnect FOCUWAY-T6xxx wifi, use WiFi or cellular data that can connect to the Internet to load the map

You can import the whole google map by zooming

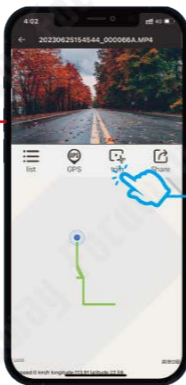
2. Playback driving route on phone

You need to first download the video to the "Local Album," and then open the video within the Local Album to see the travel route.

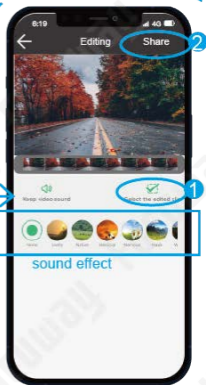
Please refer to the download instructions on **page 8** to download the desired video to the local album.



The downloaded file stored in "Local Album"



Playback driving route



You can edit and share interesting stories here.

3. Playback driving route on PC (computer)

Insert the memory card into the computer using a card reader. In the primary directory, locate the file "gxplayerv1.3.6.exe" and install it. You can use this software for playback the video file, it can replay the driving route.



2023/1/1 0:01



2023/1/1 0:00



ABOUT T6 DASH CAM

1 PACKAGE INCLUDE



T6 dash cam



Car Charger



Rear Camera



Electrostatic Film

2 INTERFACE AND BUTTONS



Front camera

Microphone

SD card slot

Power button



3 BUTTON FUNCTIONS

Power button functions

Press the button once to start or stop the recording.
Long press the button to turn the camera on or off.

Additional features:

When the dash cam is recording, you can stop the recording by short pressing the POWER button. After hearing "Recording Stop," you can perform the following operations:

1). Switch 5GHz WiFi to 2.4GHz: Press the POWER button three times continuously. If you cannot find the dash cam's WiFi on your phone, you can switch it to

2.4GHz and try again. Some older cell phones do not support 5GHz WLAN.

2). Switch 2.4GHz WiFi to 5GHz: Press the POWER button three times continuously.

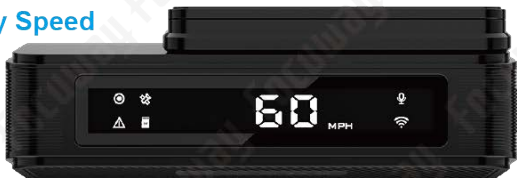
3). Reset passwords: Press the POWER button five times continuously.

4 SCREEN DISPLAY

1. Display time



2. Display Speed



3. Screen Saver



You can switch the screen display mode (DATE TIME or SPEED) in the settings, or enable the screensaver function.



5 (ICON MEANNING)



ICON	MEANING
	Flashing - T6 is recording video
	Stable - Video recording stopped
	GPS is working / signal received normally
	Emergency lock The currently recorded video is locked
	Memory card inserted/no memory card
	System time
	Driving speed
	Sound Recording is turned on
	Wi-Fi is turned on



MEMORY CARD/ TF CARD

The focuway T6 dash cam comes with a built-in memory card. If you wish to replace or upgrade to a larger capacity memory card, please refer to our recommendations for purchasing. It is crucial to use a high-performance memory card to ensure the

proper functioning of the T6. Counterfeit brands may cause malfunctions.

we recommend you purchase:



TYPE	RECOMMENDED CARD
microXC	
URS	SAMSUNG Class-10, U3 Speed Micro-SD card is required, up to 256GB Maximum
U3	
CLASS	
I/10	
MAX	
256GB	

Amazon ASIN: B09WB1857W

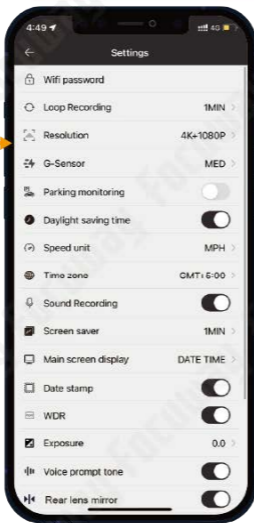
Please purchase from the official seller rather than third parties to avoid buying counterfeit card.

Format new TF card when first use!

Due to T6 only supporting FAT32 formatted memory cards, the new memory card needs to be formatted in the OKCAR app during the first use. Otherwise, you may receive a voice prompt saying "Please format the memory card" or "Card full", "Storage full". Please refer to the quick guide to connect T6 to your phone via WiFi and then locate the "format" option in the settings to format the memory card.



SYSTEM SETTING



WiFi password

The default password for FOCUWAY-T6xxx WiFi is 12345678.

For privacy protection, we recommend changing the password and keeping it secure. If you forget your password, you can reset it to 12345678 by pressing the power button five times consecutively.

Loop Recording

The basic working principles of the dash cam, please refer to the feature description on page 23.

Resolution

The resolution for recording videos on the dash cam, we recommended to maintain the default settings.

G-Sensor

The base of "Emergency Lock" function, please refer to the detailed description of "Emergency Lock" on page 24.

Parking monitoring

This function is part of the parking protection feature and requires purchasing FOCUWAY's voltage reduction cable. Please refer to the description of the parking protection on page 26 for detailed information.

DST, Sped unit, time zone

Set the appropriate standards according to your time zone and country to ensure the accuracy of time and driving speed as evidence.

Sound Recording

The dash cam records audio along with the video. If you disable this function, the recorded video

evidence will be silent. Audio recording is important evidence, and we recommend enabling this function.

Screen saver

After setting, if there are no operational instructions for T6 dash cam within the set time period, the display on the device will turn off, leaving only a flashing white dot as an indication that T6 is recording video.



Main screen display

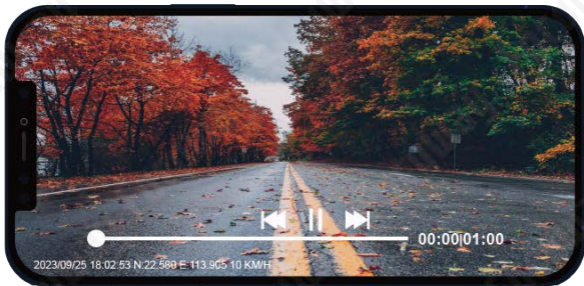
The screen display can be switched between displaying time and speed. Please refer to the instructions on page 14.

Voice prompt tone

In certain situations, T6 dash cam may provide voice prompts. If you disable this option, T6 will no longer have voice prompts. For more information about this feature, please refer to the feature introduction on page 27.

Date stamp

Enabling this function will add a system timestamp watermark to all recorded video frames. As time is a crucial aspect of evidence, we recommend enabling this function and ensuring the system time is correct.



Rear lens mirror

When this feature is enabled, the recorded videos from the rear camera will be reversed horizontally.

Time-lapse photography

Time-lapse photography and Parking monitoring are both solutions to protect the car while parked, so you can only choose one of these solutions to protect your car when parking. Both solutions require the purchase of FOCUWAY's voltage reduction cable to be used. Please refer to page 26 for information on how to purchase FOCUWAY's hardware kit.

When using the hardwire kit for power supply and enabling the "Time-lapse photography" feature, the dash cam will continue to work after the car engine is turned off. In this mode, the T6 dash cam will take photos at a rate of one frame per second and compress them into a video at 30 FPS. For example, for a 30-second parking time, it will only require 1 second of playback time in the recorded video.

There are two benefits to this approach:

Reducing the power consumption of T6 to prevent draining your car battery.

Reducing the memory space occupied by 30 times for the same recording time, which helps prevent a large number of video clips from being overwritten by the loop recording function.

Voice Volume

In this option, you can adjust the volume of the "Voice prompt tone".

Factory Reset

In this option, you can restore the device to its default settings.

Format

This option allows you to format the memory card, which will erase all data on the TF card and convert it to FAT32 format.

If you are using a new memory card and receive a prompt to "Please format SD card" during the initial use, it is because the memory card you are using is not in the supported FAT32 format. Please use this option to format it.

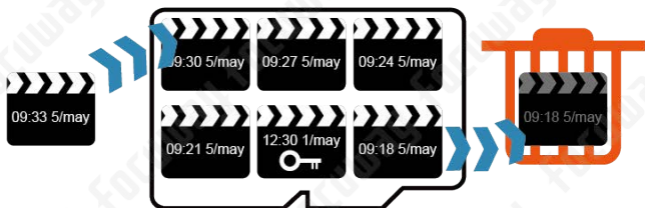
Fireware Version

The system version number of the T6 dash cam is provided to our customer service team, which can help us assist you in resolving certain issues.

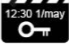


FUNCTIONS OF T6

1 LOOP RECORDING



Due to the limited capacity of the SD card, when the SD card becomes full, the latest recorded video will replace the oldest recorded video.

However, if a video file is locked , it will be preserved on the SD card and cannot be overwritten unless you format the SD card. We recommend formatting the Micro-SD card every month. (Get reason at the next part: emergency lock)

T6 will assist you in automatically locking files through the emergency lock feature. To learn more about this, please refer to the Emergency lock function.

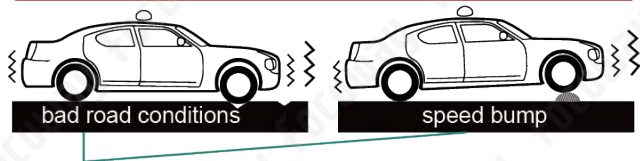
2 EMERGENCY LOCK



The T6 dash cam features a built-in impact sensitivity (⚡ G-sensor). When the car experiences vibrations or is involved in a collision, the built-in gravity sensor captures this information and automatically

locks the video recorded during the incident.

When emergency lock happens, the T6 will remind you by voice : 📢 Emergency recording start!



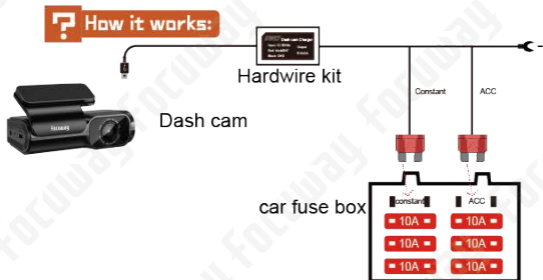
These two conditions can also trigger an emergency lock (referred to as a false lock). To minimize false locking, please set the G-sensor to "low".

⚠️ Despite these measures, false locks are inevitable. Therefore, it is necessary to periodically format the SD card to prevent the accumulation of incorrectly locked files that can fill up the memory card (to understand why this happens, please refer to page 22 in the loop recording section). Failure to address this issue can result in loop recording failure and receive a voice prompt from T6: "Please format the SD card!"

3 PROTECT WHEN PARKING

There are two working modes that can ensure T6 maintains surveillance while parking: Parking monitoring and Time-lapse photography.

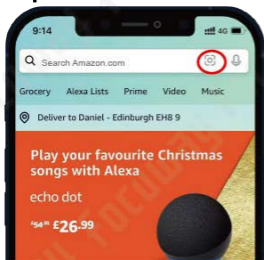
However, both of these modes require the additional purchase of Focuway's hardware kit in order to function!!!



1. Purchase the FocuWay hardwire kit

Enter the link or scan the code with the amazon app

<https://www.amazon.com/dp/B0BG5DM5CL>



2. Parking monitoring



If you activate the parking monitoring, the G-sensor will remain active. If the car experiences vibrations, the T6 dash cam will automatically activate and record a 30-second video. This video will serve as evidence and the file will be locked.

Following the 30-second emergency recording, the T6 will automatically power off and await the next vibration.

3. Time-lapse photography

There is a detailed introduction of this function on page 21, please check back.

4 VOICE PROMPT

- 🔊)) Starting up
Dash cam power on, turn on WiFi hotspot
- 🔊)) Recording start
- 🔊)) Recording stopped
- 🔊)) Emergency recording start
loop recording function(page 23)

Storage full

Please format SD card, 1.If you turn off loop recording, the memory card will fill up quickly; 2. Locked files fill up SD card, please format sd card, learn more about this, please go [page 22-24](#).

Please format the SD card

Format new TF card when first use!

Due to T6 only supporting FAT32 formatted memory cards, the new memory card needs to be formatted in the OKCAR app during the first use. Otherwise, you may receive a voice prompt saying "Please format the memory card". Please refer to the quick guide to connect T6 to your phone via WiFi and then locate the "format" option in the settings to format the memory card.

5 VOICE CONTROL

You can use voice commands to control the functions of the T6 dash cam.

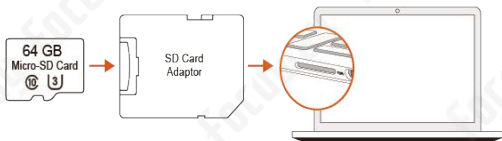
Please note: When using this feature, please ensure that the vehicle's interior is quiet, speak slowly and clearly when giving voice commands. Otherwise the system may not accurately capture the instructions.

Below are the key phrases for voice control:

Key phrases	Function explanations
Take photo	T6 will take a photo immediately
Turn on audio	T6 will record the audio as evidence when driving.
Turn off audio	T6 will not record the audio, the video will be silent.
Turn on screen	The T6 will deactivate the screen saver
Turn off screen	The T6 will activate the screen saver mode.
Lock the video	The T6 will lock the currently recorded video as crucial evidence, preventing it from being overwritten during loop recording. Unless unlocked or the memory card is formatted, that video segment will persistently remain.

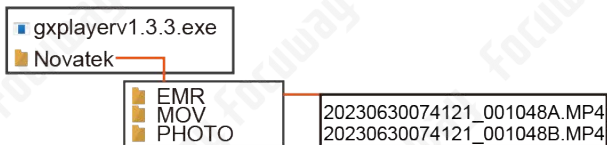
6 EXPORT VIDEO TO COMPUTER

Export by card adaptor or card reader.



Please disconnect the power connection of the T6 before removing the SD card. SD card got very hot, please wait 1 minute before removing

SD Card File Hierarchy:



EMR: Emergency recording video

MOV: Video file PHOTO: Photo file

****A.mp4 (Front camera)

****B.mp4 (Rear camera)

 [gxplayerv1.3.3.exe](#)

Insert the memory card into the T6, and after recording the first video upon startup, the T6 will automatically write the software [gxplayerv1.3.3.exe](#) into the directory. You can use this software for playback the video file, it can replay the driving route.



TROUBLE SHOOTING

Camera keeps saying " abnormal or no storage card". Even though inserting an sd card or formatting it in the settings.

Make sure you are using the recommended, Samsung or Kinston CLASS 10, U3 Speed, 32GB-256GB, otherwise you will get notice of a malfunction or inserted improperly.

Keep saying format SD card

All the new SD CARD requires to be formatted in OKCAR App. Please go to OKCAR APP→ Connect Recording Interface→Camera setting Settings→Format SD Card.

The app keeps pops up the prompt "kind reminder Please connect the Wi-Fi camera", I can't enter T6

Check if you have connect to WiFi "FOCU-WAY-T6***", if not, please connect it in phone system setting.



Because T6's WiFi cannot connect to the Internet, Your phone will automatically switch to other available WiFi after a while.

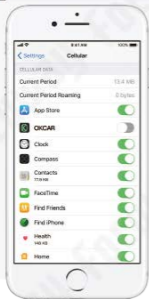
Can't view live video on the APP

The cellular data will cause the live feed not to be viewed. Please disable the "OKCAR" cellular data of your cellphone.



Latest IOS System

- 1 Go Setting
- 2 Scroll down to find "OKCAR"
- 3 Wireless Date "WLAN"



Older IOS System

Way1

- 1 Go Setting
- 2 Scroll down to find "OKCAR"
- 3 Disable "Cellular Date"

Way2

- 1 Go Setting
- 2 Cellular Date
- 3 Scroll down to find "OKCAR", disable it

Can't find FOCUWAY-T6xxx Wifi?

There may be several reasons why your dash cam is not working properly, such as insufficient power supply or lack of support for 5GHz network on your Android device. To troubleshoot the issue, follow these steps:

1. Check if the dash cam is powered on correctly:

1) Ensure that you are using the original car charger to power on the dash cam. If you use a USB cable to connect the dash cam to your PC or a mobile phone charger to power on the dash cam at home, the voltage may not be enough to power it on properly.

2) Listen for the voice prompt while the dash cam is turning on. You should first hear "Starting UP," and about 10-15 seconds later, "Recording Start." At the same time, the green indicator in the reset hole should be flashing. If you don't insert a TF card, you should hear "Starting UP" and "Please insert memory card," and the green indicator should be solid.

If your dash cam powers on correctly, check the

following:

3) Check your WLAN network agreement:

You can check your WLAN network agreement by accessing your phone settings and selecting the "About My Phone" option. Alternatively, you can also visit your mobile phone brand's official website to check the WLAN network agreement. Please note that only WLAN network agreements that support 802.11ac or 802.11a/b/g/n/ac Dual-band wireless networks can access 5GHz WiFi.

4) If your phone only supports 2.4GHz WiFi after verification, switch the T6 WiFi to 2.4GHz:

Press the POWER button to stop recording. Once you hear the "Recording Stop" voice, press the POWER button three times continuously. You should hear the voice prompt, "WiFi switch to 2.4GHz."

If you still cannot find the dash cam WiFi, please send an email to us at support@focuway.com.

Connect the WiFi successfully, but App does not recognize it?

1. Please uninstall the APP, and forget the dash cam WiFi first.
2. To ensure successful connectivity, please follow these steps in order: Download the OKCAR app >> open App, click the add button >> automatically switch to the cell phone wifi list >> connect to the wifi >> select 'Always Connect' when prompted by your phone's WLAN settings >> finally return to the app, which will automatically recognize the name of the wifi.
3. Please download the App “viidure” to try out.



VIIDURE

Search “viidure” on Googleplay or App store

Connect the WiFi successfully, but the App is stuck and shows 'Buffering'?

Connect the App successfully, but the App does not show live image, just black screen?

1. This issue is always caused by the fail connection between the App and dash cam wifi, please forget the dash cam wifi on the wifi list, exit the OKCAR App, restart the dash cam, then reconnect the dash cam wifi (if you have a Android phone, please select '**Always Connect**' when prompted by your phone's WLAN settings, if you have an iPhone, please turn off the Cellular Data first)

IOS

The Wi-Fi network
"FOCUWAY-T6" does not
appear to be connected
to the Internet

Do you want to temporarily
use cellular data?

Use Cellular Data

Keep Trying Wi-Fi

Samsung

Internet may not be available

If you want to connect to this network
without internet access, you can connect
only this time or you can set your phone
to always connect to it even if internet
isn't available.

You can change this in Settings >
Connections > Wi-Fi > ADVANCED
> Switch to mobile data > Network
exceptions.

Connect only this time

Always connect

Disconnect

Android

Android System
Wi-Fi has no Internet access
Tap for options

This WLAN network has no Internet
access. Connect anyway?

CANCEL

CONNECT

FOCUWAY-T6****
This network has no Internet access.
Stay connected?

Don't ask again for this network

NO

YES

2. Download the App “**viidure**” to try out.
3. Both Apps can't be used on your phone, this is caused by the dash cam app compatibility with your cell phone, please find the **Feedback** function on the OKCAR App and report this issue, send email to us : support@focuway.com, we can address the compatibility issue for you immediately.

Can't delete the Loop Recording files?

1. The emergency videos can't be deleted
2. If you failed to delete the loop record videos, please make sure the sd card you are using is from us or the recommended SAMSUNG sd card.
3. Email us to get a new memory card:
support@focuway.com

Automatically disconnected while use?

1. Please confirm if there are no available WLANs that can access the internet close to your dash cam. The dash cam's WiFi has lower priority compared to other WLANs that can access the internet. If there are any, please forget the available WiFi on your cellphone.
2. If you're using an iPhone, please turn off Cellular Data first as it may occupy the dash cam's WiFi data channel.

Video play failed?

1. This issue is always caused by the sd card is too low, change a new high-speed sd card will solve this issue immediately. Or you can export the video from the sd card to your computer to check (If the sd card can't be read by your PC, you need to replace the card)
2. Email us to get a new 64GB U3 sd card, or buy the recommended SAMSUNG SD card on the Amazon.

When insert a new sd card and power on the dash cam, it says 'Card full '?

1. This issue is caused by the dash cam can't recognize the sd card format, so please get into the SETTINGS of the App and find the 'format' function to format the new sd card, then you can use it well. For details, please refer to the instructions about the memory card on pages 16-17.
2. Still has the problem, please email us to get a new 64GB TF card: support@focuway.com

GPS does not connected?

Please make sure you are in the open area, the GPS activate time is about 1 minute when the first use, you can hear the voice 'GPS Activate' when the GPS signal is connected, and the GPS signal will show on the screen.

Cannot see the GPS tracking when playback the downloaded videos?

1. Ensure that the GPS is activated while using the dash cam.
2. After downloading the videos, return to the Local Album of the App to play them back.
3. Disconnect the dash cam's Wi-Fi and enable cellular data while playing back the downloaded videos. If the issue persists, please contact our support team via email at support@focuway.com.

How to view the GPS trackings?

View on your phone: page 9-11.

View on your PC/computer: page 30

Still Need Help or Have Questions?

Please feel free to contact our world class support Email:

Scan the QR Code to Email US
or send us: support@focuway.com



Made in China

