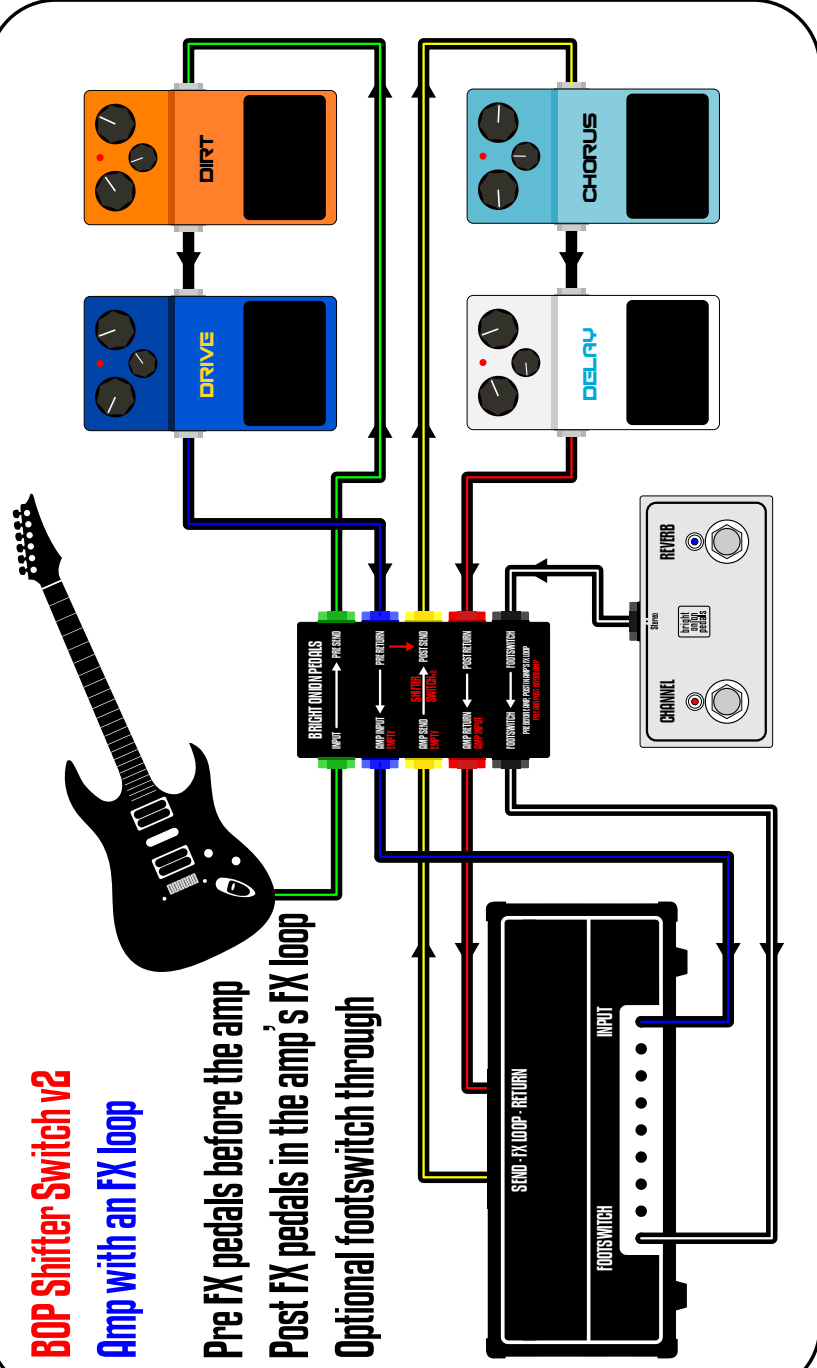


# SHIFTER SWITCH PATCHBOX v2

Lets you use your pedalboard with an amp with an FX loop...

## BOP Shifter Switch v2 Amp with an FX loop



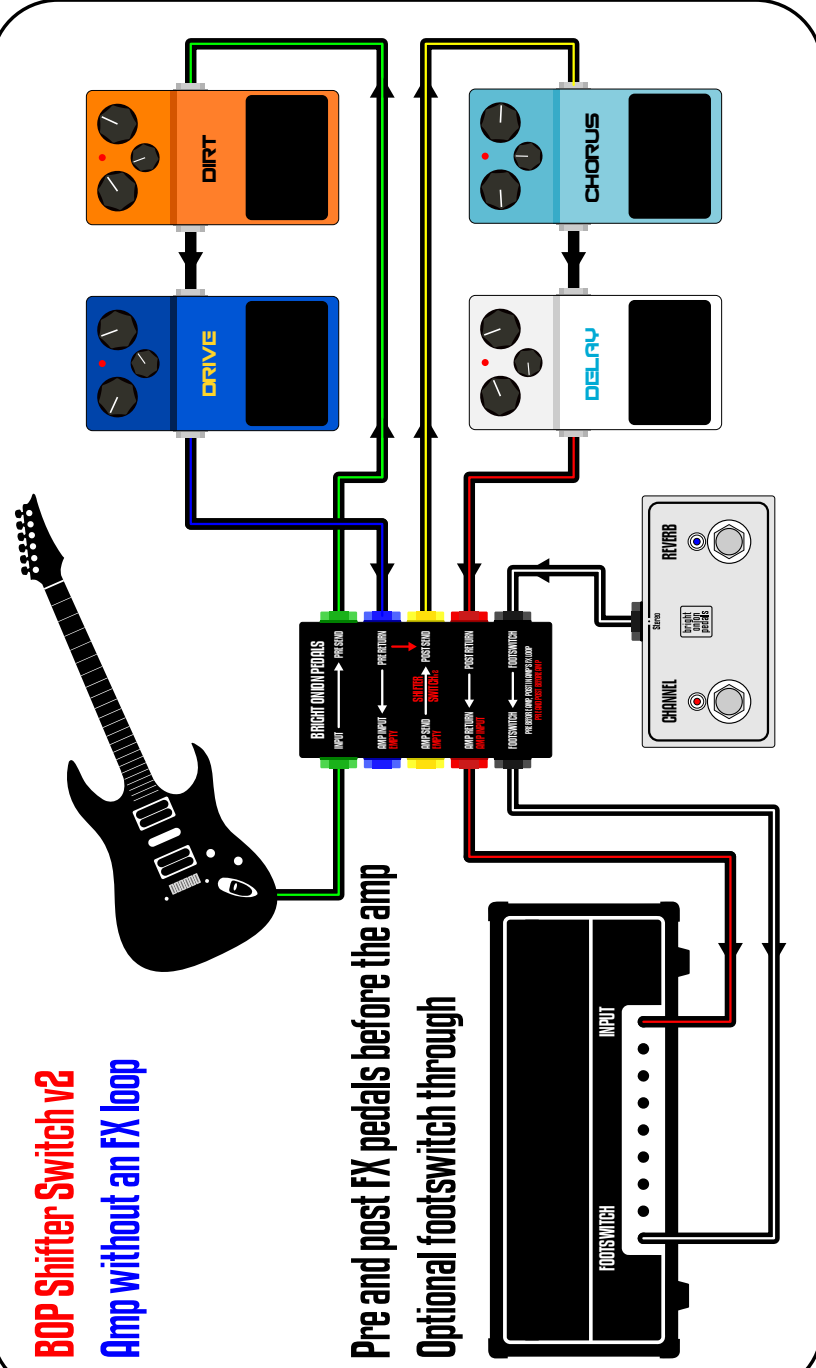
Pre FX pedals before the amp

Post FX pedals in the amp's FX loop

Optional footswitch through

...and with an amp with no FX loop!

## BOP Shifter Switch v2 Amp without an FX loop



Pre and post FX pedals before the amp

Optional footswitch through