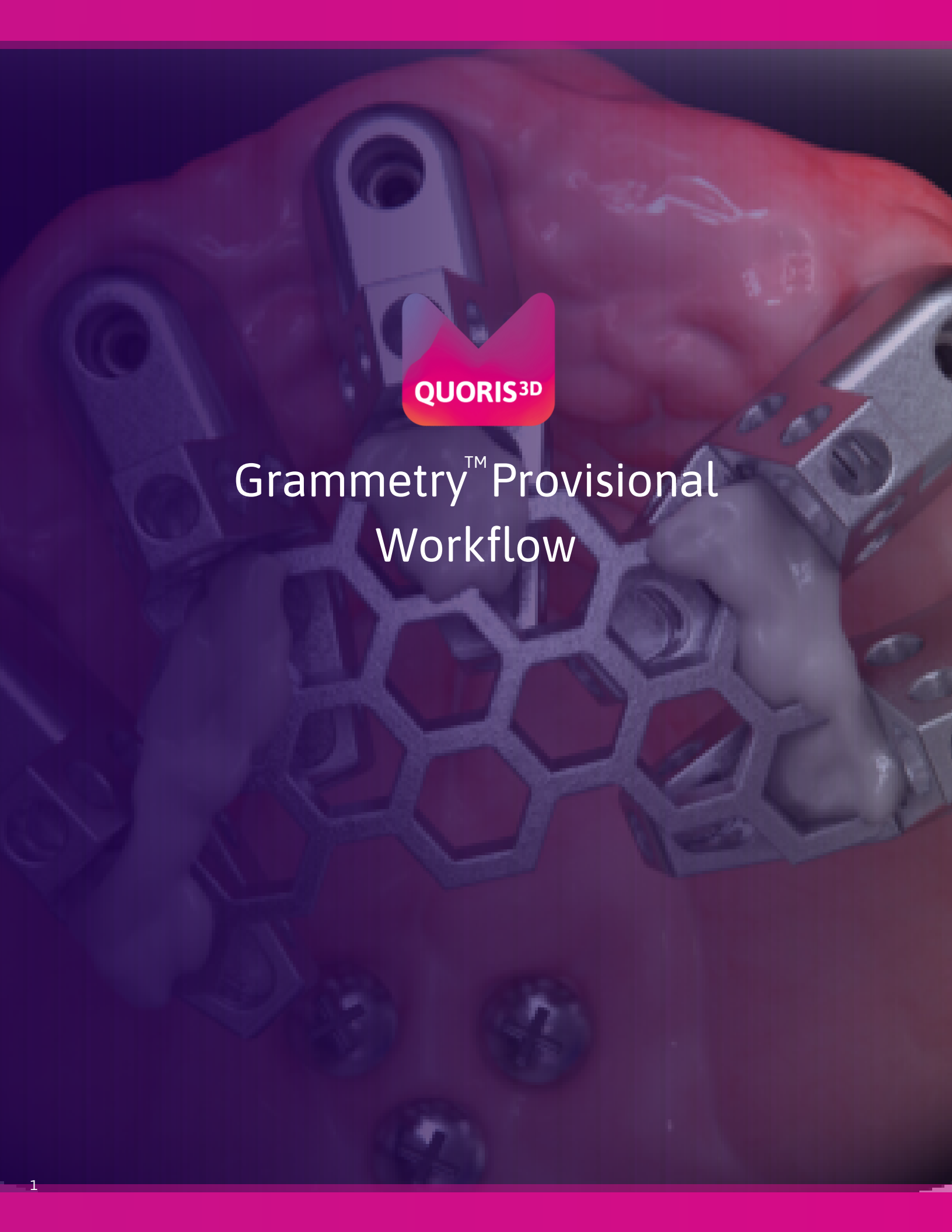




Grammetry™ Provisional Workflow



Book in with pre-op records

7 days pre-surgery, book in your Grammetry case and send us all required pre-op records. See Quoris3D.com for case booking and records submission.

1 Clinical Photographs

Grammetry requires six photographs to start a case:

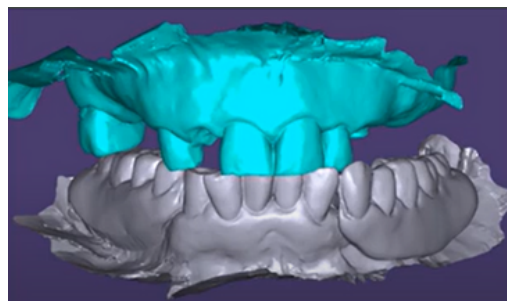
1. Full face full smile
2. Full face exaggerated smile
3. Full face profile
4. Centre retracted in occlusion
5. Left retracted in occlusion
6. Right retracted in occlusion



2 Initial IOS Scans

Please scan:

1. Upper
2. Lower
3. Occlusion (Bite)



3 Send to Quoris3D & Complete RX

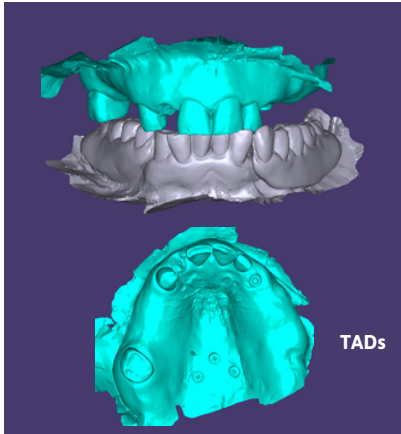
Submit RX form and records via quoris3d.com, email / WeTransfer to admin@quoris3d.com or submit scans via IOS portal.

Your Optisplint kit and Vortex screws will be sent for surgery day.



Choose your surgical protocol

Markers as Bite Reference.....	4
Denture as Bite Reference.....	5
Teeth as Bite Reference.....	6



1 Pre-Surgical Scan

Scan 1

On the day of surgery, prior to beginning the surgical protocol:

- Place at least two TADs on the palate or retromolar pads. If using Arch Tracers, place on the labial reflected bone. Check the CBCT for the best location.
- Scan:** Capture pre-surgical IOS scan.

Important: Ensure that the TADs or Arch Tracers are fully visible in the scan capture.

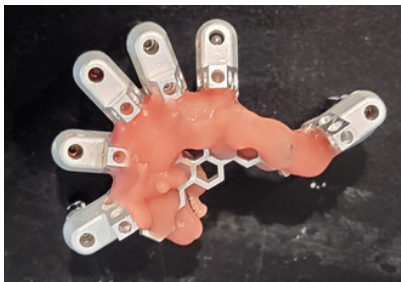


2 Lute Frame to OptiSplints

- After implant and MUA placement, but prior to suturing, place one OptiSplint scan body on each MUA, and rotate until the horizontal wings are touching or close to touching. Hand tighten each OptiSplint.

Important: Ensure the frame is making at least partial contact with each OptiSplint scan body prior to luting.

- Lute the frame to the OptiSplint scan bodies using an ultra-low shrinkage material. Adjust with cutters to fit if necessary. Remove luted OptiSplint assembly once cured.



3 Scan Optisplint

Scan 2

Send us an IOS **Scan** of the Optisplint



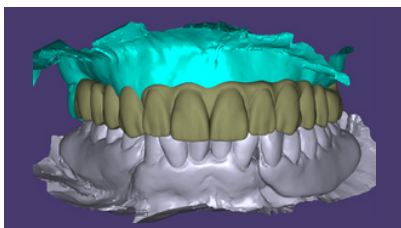
4 Post-Surgical Impression

Scan 3

Two options:

Scan: IOS: Capture an IOS scan of the tissue with healing collars seated (no OptiSplint).

Scan: PVS: Capture a PVS impression of the tissue with healing collars seated (no OptiSplint) and scan with IOS.

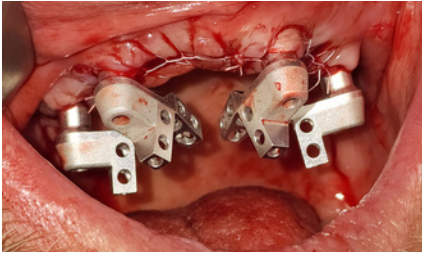


5 Submit Scans

Submit your scans via the IOS portal, OR export your .STLs and upload via Quoris3D.com.

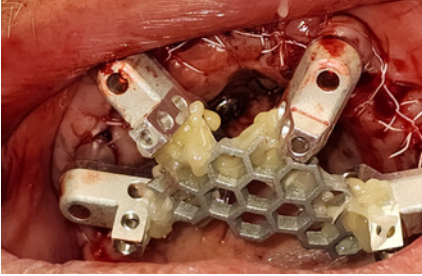
What happens next?

Send your patient home to relax. Within 48 hours, we will design, print and ship your provisional bridge.



1 Place OptiSplints on MUAs

After implant and MUA placement, but prior to suturing, place one OptiSplint scan body on each MUA, and rotate until the horizontal wings are touching or close to touching. Hand tighten each OptiSplint.



2 Lute Frame to OptiSplints

Important: Ensure the frame is making at least partial contact with each OptiSplint scan body prior to luting.
Lute the frame to the OptiSplint scan bodies using an ultra-low shrinkage material. Adjust with cutters to fit if necessary. Remove luted OptiSplint assembly once cured.



3 Scan Optisplint

Send us an IOS **Scan** of the Optisplint

Scan 1



4 Denture Scan Protocol

- Seat healing caps on each MUA and suture.
- Reline the patient's denture(s) with PVS. Place in the mouth & let set, in occlusion.
- With PVS set, open and scan:

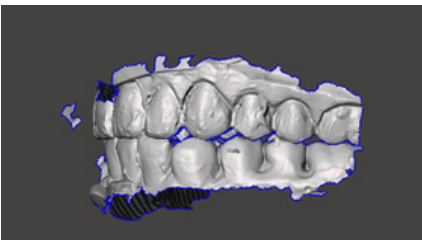
Scan 1: opposing

Scan 2: scan denture in place

Scan 3: close and scan bite.

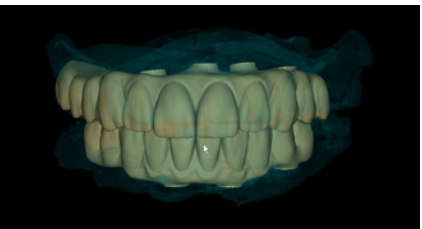
Scan 4: Remove denture and take 360° IOS scan of the denture, capturing a clear image of the intaglio and healing caps.

Scans 2, 3, 4 & 5



5 Double Arch Protocol

If double arch, complete wash impression of both arches and allow material to set while patient is in the bite. Remove both prostheses, scan 360, paying special attention to the healing caps. Handhold dentures for bite scan. If bite was off, capture PVS bite registration and extraorally scan the bite using this registration.

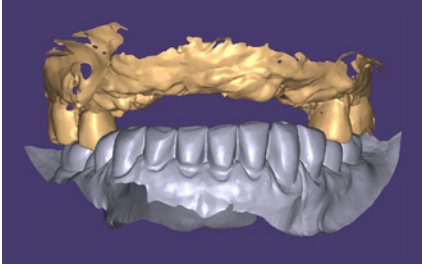


6 Submit Scans

Submit your scans via the IOS portal, OR export your .STLs and upload via Quoris3D.com.

What happens next?

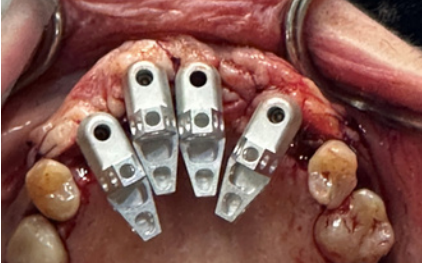
Send your patient home to relax. Within 48 hours, we will design, print and ship your provisional bridge.



1 Pre-Surgical Scan

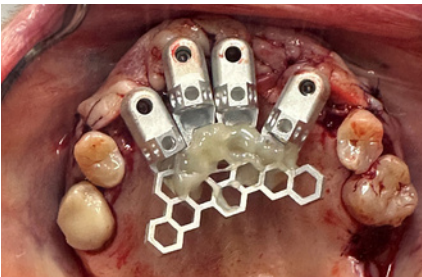
Scan 1

Scan: On the day of surgery, prior to beginning the surgical protocol, capture a pre-surgical IOS scan including the reference teeth.



2 Place OptiSplints on MUAs

After implant and MUA placement, but prior to suturing, place one OptiSprint scan body on each MUA, and rotate until the horizontal wings are touching or close to touching. Hand tighten each OptiSprint.



3 Lute Frame to OptiSplints

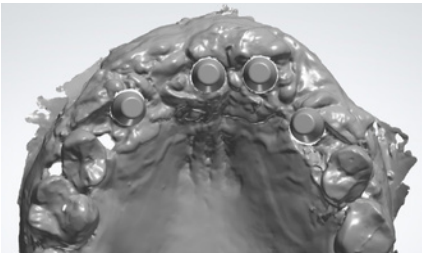
Important: Ensure the frame is making at least partial contact with each OptiSprint scan body prior to luting.
Lute the frame to the OptiSprint scan bodies using an ultra-low shrinkage material. Adjust with cutters to fit if necessary. Remove luted OptiSprint assembly once cured.



4 Scan Optisplint

Scan 2

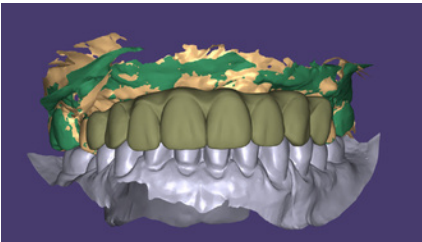
Send us an IOS **Scan** of the Optisplint



5 Post-Surgical Intraoral Scan

Scan 3

Scan: Capture an IOS scan of the tissue with healing collars seated (no OptiSprint).



6 Submit Scans

Submit your scans via the IOS portal, OR export your .STLs and upload via Quoris3D.com.

What happens next?

Send your patient home to relax. Within 48 hours, we will design, print and ship your provisional bridge.