



1 Clinical Photographs

1. Full face full smile
2. Full face exaggerated smile
3. Full face profile
4. Centre retracted in occlusion
5. Left retracted in occlusion
6. Right retracted in occlusion

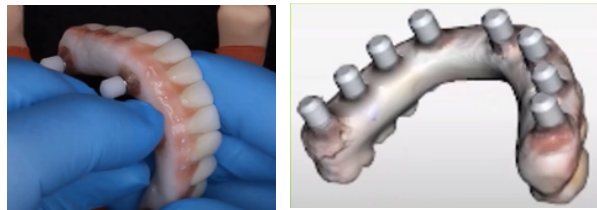


2 Initial IOS Scans

With the existing temporary prosthesis in place:

1. **Scan** Upper
2. **Scan** Lower
3. **Scan** Occlusion (Bite)

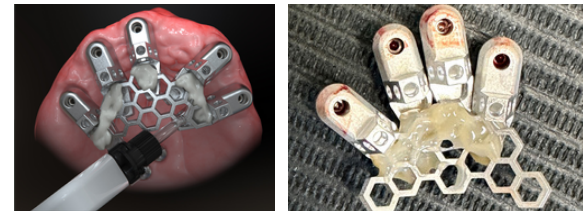
Scans 1, 2 & 3



3 Extraoral IOS Scans

Remove the existing temporary. Place plastic scan flags and using your IOS carry out a 360 degree **scan** of the bridge.

Scan 4



4 Optisplint

Attach the Optisplint scan bodies to the existing MUAs. Tighten screw to 10Ncm. Lute in place the honeycomb framework using WHITE Stellar & remove. Package the Optisplint carefully and send back to Quoris3D for lab scanning.



5 Soft Tissue Scan

Place MUA cover caps and IOS **scan** the soft tissue.

Scan 5



6 Refit Temporary Bridge & Submit Records

Submit RX form and records via quoris3d.com, email / WeTransfer to admin@quoris3d.com or submit scans via IOS portal.

Order Notes: On all orders, please note implant system, shade & any changes you want from the existing temp. Vortex screws are our recommended screws for direct to MUA. They torque at 15Ncm and require a T5 driver. if you do not have one please let us know & we can provide one.

What happens next?

Receive your bridge design for review. Advise of any edits or approve. Q3D manufactures your bridge and ships within 10 working days, including Vortex screws to fit. If in the lab, we feel that you require a try in, this will be communicated to you and will either be provided as a STL for inhouse printing or printed by us and sent out for final checks.

Fit your patient's final bridge!

In 92% of cases it's a simple as that - 2 appointments to final, one happy patient with a beautiful Zirconia final bridge.