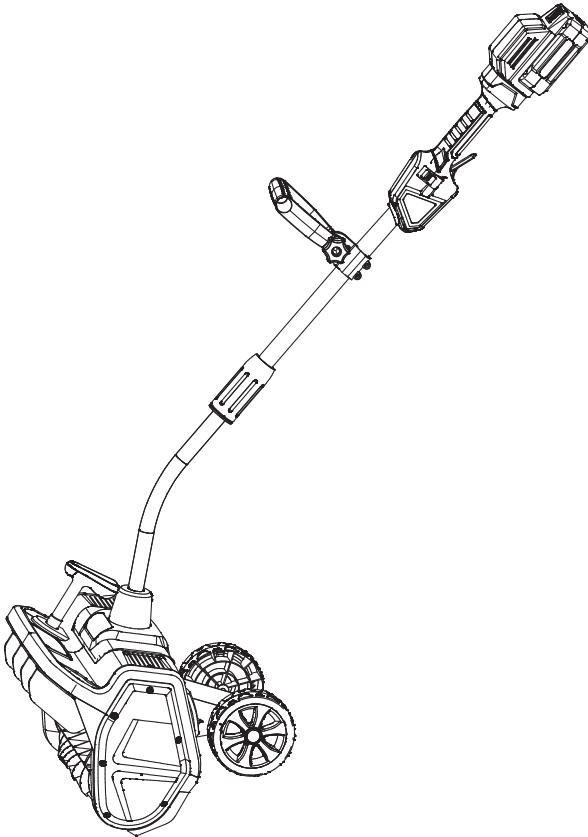




# 17" Cordless Snow Thrower Operator's Manual

---



**WARNING:**

Read carefully and understand all INSTRUCTIONS before operating. Failure to follow the safety rules and other basic safety precautions may result in serious personal injury. Save these instructions in a safe place and on hand so that they can be read when required. Keep these instructions to assist in future servicing.

---

# 1. PRODUCT SPECIFICATIONS

<b>Voltage</b>	48V DC
<b>No-load Speed</b>	2000RPM
<b>Clearing Width</b>	17" / 43cm
<b>Maximum Snow Intake Height</b>	5.7" / 145cm
<b>Maximum Throwing Distance</b>	23' / 7m
<b>Weight</b>	19.8Lbs / 9kgs
<b>Battery</b>	48V DC 2Ah Li-ion
<b>Charger</b>	Input: 100~240V AC 50/60Hz, Output: 50.4V DC, 1A

# 2. GENERAL SAFETY WARNINGS

**ALL OPERATORS MUST READ THESE INSTRUCTIONS BEFORE USE.**

## **⚠ WARNING**

Before using this tool or any of its accessories, read this manual and follow all Safety Rules and Operating Instructions.

The important precautions, safeguards and instructions appearing in this manual are not meant to cover all possible situations. It must be understood that common sense and caution are factors which cannot be built into the product.

**WEAR EYE PROTECTION**

**WEAR A FACE MASK**

**WEAR EAR PROTECTION**

## **WORK AREA SAFETY**

- 1) Keep work area clean and well lit. Cluttered or dark areas invite accidents.
- 2) Do not operate snow shovel in explosive atmospheres, such as in the presence of flammable liquids, gases, or dust. Power tools create sparks which may ignite dust or fumes.
- 3) Keep children and bystanders away while operating a power tool. Distractions can cause you to lose control.
- 4) Do not expose the snow shovel to rain or wet locations. Water entering a shovel will increase the risk of electric shock.

## **ELECTRICAL SAFETY**

## **⚠ WARNING**

- 1) Use proper circuit protection.
- 2) Ventilation openings in batteries and chargers must always be to allow cooling air to circulate freely. Air vents that are blocked, restricted or covered may result in the battery or charger overheating.
- 3) Overheating may lead to damage to the tool or cause a fire resulting in possible serious injury.

### 3. SPECIFIC SAFETY RULES

#### **WARNING**

- 1) Read, understand and follow all instructions on the machine and in the manual before operating this unit.
- 2) Thoroughly familiarize yourself with the controls and the proper use of the equipment. Know how to stop the unit and disengage the controls quickly.
- 3) Children should never be allowed access to the equipment. Adults should never operate the equipment without carefully reading and understanding these instructions
- 4) Keep the area of operation clear of all persons, particularly small children and Exercise caution to avoid slipping or falling.
- 5) Thoroughly inspect the area where the equipment is to be used and remove all doormats, sleds, boards, wires and other foreign objects.
- 6) Do not attempt to clear snow from a gravel or crushed rock surface. This product is intended for use only on paved surfaces.
- 7) Never attempt to make any adjustments while the motor is running (except when specifically recommended by the manufacturer).
- 8) Do not put hands or feet near or under rotating parts. Keep clear of the discharge opening at all times.
- 9) Exercise extreme caution when operating on or crossing gravel drives, walks or roads. Stay alert for hidden hazards or traffic.
- 10) After striking a foreign object, stop the motor. Thoroughly inspect the cordless snow shovel for any damage, and repair the damage before restarting and operating the cordless snow shovel. If the unit should start to vibrate abnormally, stop the motor and check the unit immediately to ascertain the cause. Vibration is generally a sign of trouble.
- 11) Stop the motor and remove the battery whenever you leave the operating position, when transporting the unit, before unclogging the rotor blade housing and when making any repairs, adjustments or inspections to the unit.
- 12) When cleaning, repairing or inspecting the cordless snow shovel, make sure that all moving parts have come to a complete stop before beginning work. Exercise extreme caution when operating on slopes.
- 13) Look behind and use care when backing up with the cordless snow shovel. Never operate the cordless snow shovel without good visibility or light. Always be sure of your footing, and keep a firm hold on the handles. Walk, never run with the unit.

#### **CLEARING A CLOGGED ROTOR HOUSING**

#### **WARNING**

Hand contact with the rotating rotor blades Inside the rotor housing is the most common cause of Injury associated with cordless snow shovels. Never use your hands to clear a clogged rotor housing.

##### **To clear the rotor housing:**

- 1) Shut the motor off and remove the battery.
- 2) Wait 10 seconds to be sure the rotor blades have come to a complete stop.
- 3) Always use a clean-out tool, not your hands, to free the rotating blades.

### 3. IMPORTANT SAFETY INSTRUCTIONS FOR BATTERY AND CHARGER

#### BATTERY

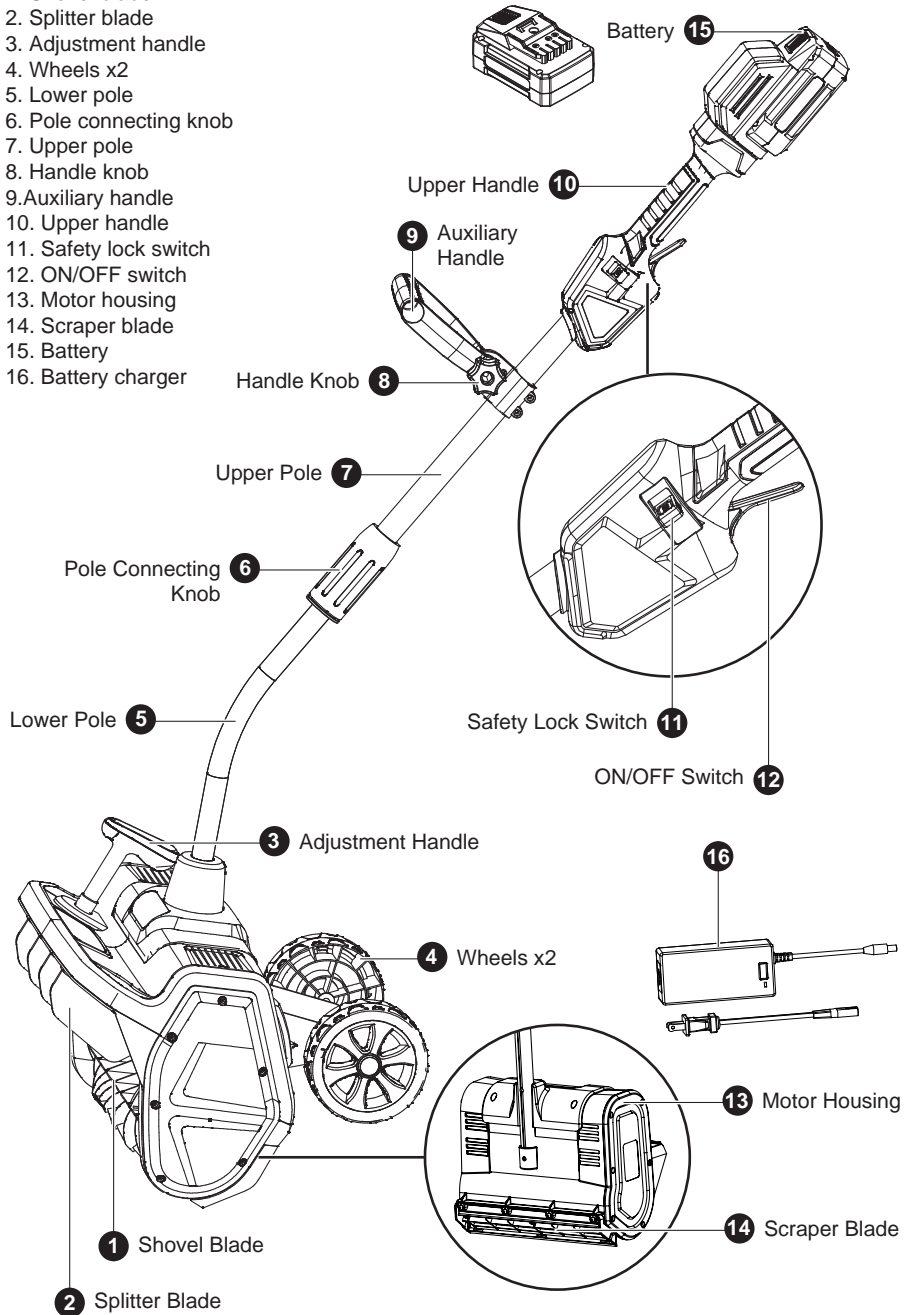
- 1) Battery must be fully charged before first use.
- 2) Insert charger pin to battery. Plug the charger into a 100-240 AC outlet, a red light should appear on the charger. Charge the battery until the light on the charger turns solid green.
- 3) Always charge the battery at room temperature (**suggest temperature range is 32°F/0°C to 120°F/49°C**). If the battery is used in a cold environment, allow it to warm up for at least an hour before charging. Cold batteries will not be charged completely and battery components may be damaged.
- 4) Only charge battery in well ventilated area away from flammable materials such as cloth or carpeting.
- 5) To disconnect charger, remove the plug from outlet, then disconnect the charger from the battery.
- 6) DO NOT leave the charger being connected to the battery for more than 24 hours.
- 7) The battery status indicator is mounted on the top of the battery to allow you to observe the level of the battery power while in use. To check the charge level, simply press the indicator button. The lights on the status indicator show the charge level of the battery.
  - a) **One LED (one red): 0~30% battery capacity;**
  - b) **Two LEDs (one red, one green): 30%~60% battery capacity;**
  - c) **Three LEDs (one red, two green): 60%~80% battery capacity;**
  - d) **Four LEDs (one red, three green): 80%~100% battery capacity.**
- 8) If battery becomes warm or hot during charging procedure, disconnect it from charger. Allow battery to return to room temperature, and attempt to charge again. If this persists a second time, disconnect battery from charger and contact customer service.
- 9) Battery Maintenance Responsibility: Fully charge and discharge the battery at least once every 8 months to maintain battery's health.
- 10) Store the battery on a full charge.
- 11) When battery pack is not in use, keep it away from other metal objects like paper clips, coins, keys, nails, screws, or other small metal objects that can make a connection from one terminal to another. Shorting the battery terminals together may cause burns or fire.

#### CHARGER

- 1) The battery is charging when the LED light on the charger is red. When the battery is 100% charged, the light on the charger will turn solid green.
- 2) The provided charger has a built-in overcharge protection to prevent the battery from being overcharged.
- 3) Charging time is approximately 1.5~2 hours for a fully discharged battery.
- 4) Regularly inspect the charger for damage to the cord, plug, enclosure and other parts. In the event of such damage, the charger must not be used until it has been repaired or replaced.
- 5) Unplug the charger from the wall outlet when not in use. **As a safety mechanism, when the charger stops charging because the battery is full, the charger must be reset by unplugging it from the wall outlet before it will resume charging.**
- 6) **Use only the charger supplied with this scooter or a recommended replacement specified by SuperHandy. Failure to confirm compatibility, properly install, operate and maintain any charger, component or accessory can result in serious injury or death.**

## 4. MAIN COMPONENTS

1. Shovel blade
2. Splitter blade
3. Adjustment handle
4. Wheels x2
5. Lower pole
6. Pole connecting knob
7. Upper pole
8. Handle knob
9. Auxiliary handle
10. Upper handle
11. Safety lock switch
12. ON/OFF switch
13. Motor housing
14. Scraper blade
15. Battery
16. Battery charger



## 5. ASSEMBLY

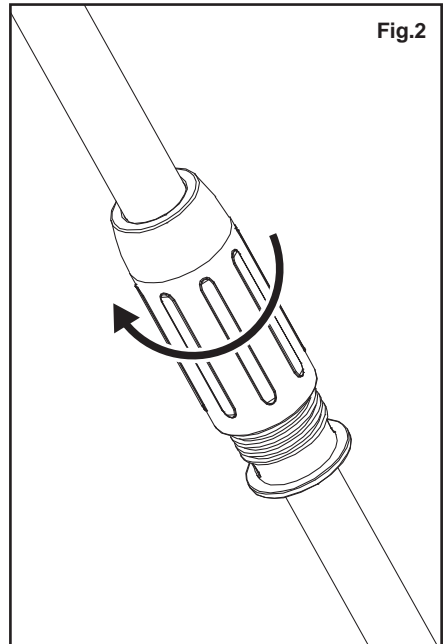
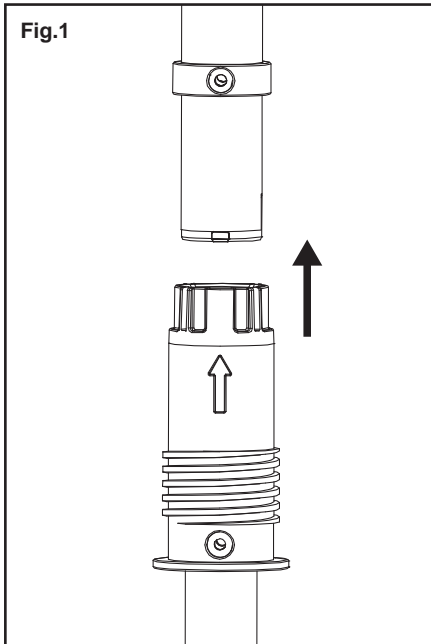
### 1. ASSEMBLE THE POLE

- 1) Open box, check with two assembled components which are upper pole assembly and lower pole assembly.
- 2) Align the assemble point in upper pole to the arrow mark in lower pole. (See Fig.1)
- 3) Insert the upper pole assembly into the lower pole assembly after aligned.

### **⚠ WARNING**

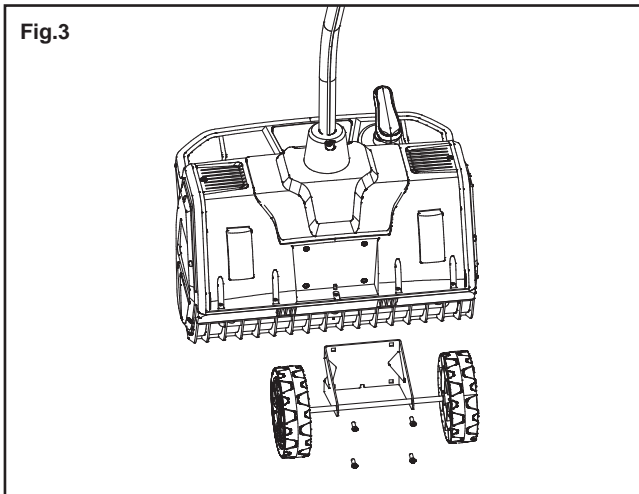
**DO NOT force to insert when align in wrong position. The inner power connection pins will be damaged by violent pushing.**

- 4) Turn the pole connecting knob by clockwise to lock both poles. (See Fig.2)



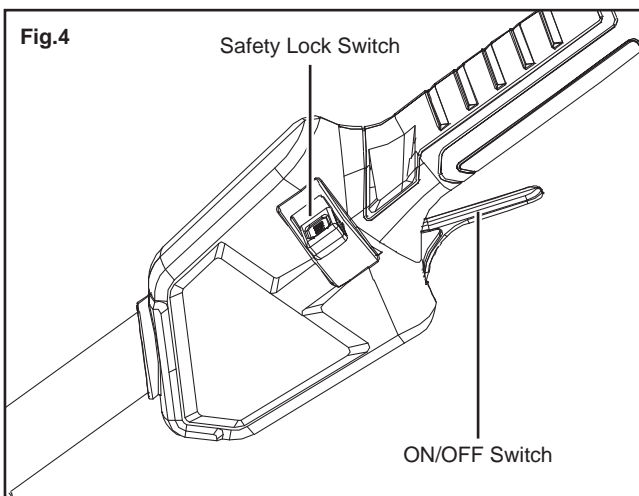
## 2. ASSEMBLE THE WHEELS

- 1) Assemble the wheels kit as **Fig.3**.
- 2) Fixed by four screws.
- 3) Notice the correct alignment hole for assembly.



## 3. STARTING THE MACHINE

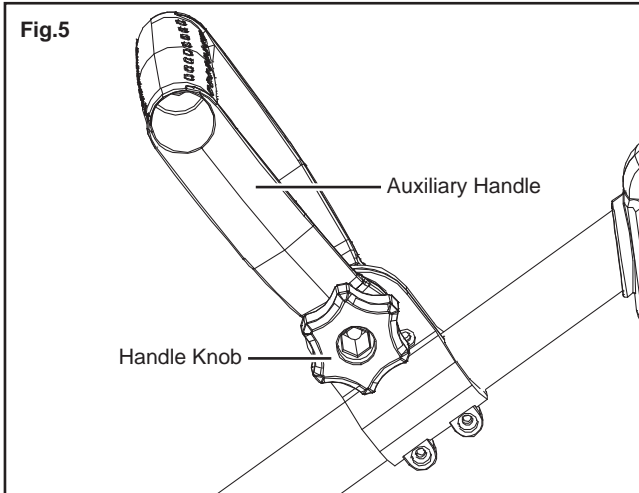
- 1) To start the cordless snow shovel, push and hold the safety lock switch on the side of the handle grip with your thumb and then squeeze the ON/OFF switch with your fingers.
- 2) Once the machine powers on, you can release the safety lock switch and proceed with operation.
- 3) To stop the cordless snow shovel, release the ON/OFF switch.



#### 4. AUXILIARY HANDLE ADJUSTMENT

To adjust the angle of the auxiliary handle, follow the instructions below.

- 1) Stop the machine and remove the battery. Wait until the blade comes to a complete stop.
- 2) Loosen the auxiliary handle by turning the handle knob counterclockwise. Rotate the auxiliary handle to a comfortable position.
- 3) Fix the handle by tightening the handle knob. Insert the battery and resume working to adjust the location of the auxiliary handle, follow the instructions below.

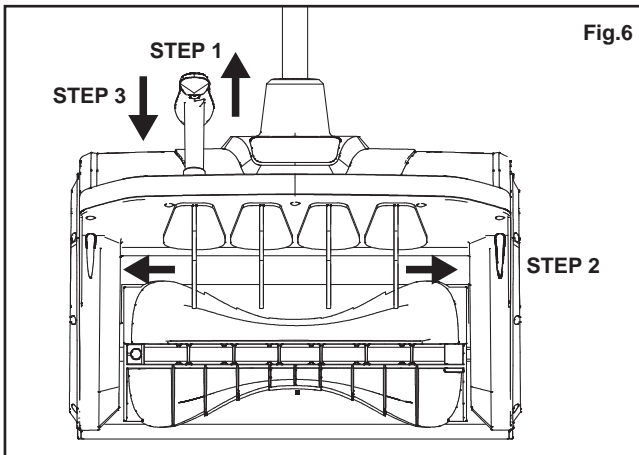


#### 5. SNOW THROWING ANGLE ADJUSTMENT

**STEP 1:** Pull up the adjustment handle at the top of tool housing.

**STEP 2:** Turn the handle left or right to reach a suitable throwing angle.

**STEP 3:** Press down the handle to lock the throwing angle.





## **OPERATING TIPS**

1. Start the cordless snow shovel. Push the shovel forward at a comfortable forward speed, and slow enough to clear the path completely. The clearing width of the snow shovel and the depth of snowfall should dictate your forward speed.
2. Direct the snow discharge to the right or to the left by adjusting the snow throwing angle.
3. To remove snow most efficiently, throw the snow downwind and slightly overlap each swath.
4. When clearing deeper drifts, hold the cordless snow shovel by the upper and lower handles and use a swinging or sweeping motion. Remove up to 6"/16cm.
5. Remove the battery after using the cordless snow shovel. Hang the shovel so it will not be misplaced or damaged.

## **MAINTENANCE AND STORAGE**

1. Check all fasteners at frequent intervals for proper tightness to ensure that the equipment is in safe working condition.
2. Always refer to the operators' manual for important details, such as how to properly store your cordless snow shovel for an extended period of time.
3. Maintain or replace safety and instruction labels as needed.
4. Run the machine a few minutes after throwing snow to prevent the rotor blades from freezing.

## **WARRANTY**

Twelve (12) months for workmanship of the product, except for wearing parts. Warranty period starts from the product purchase date.

Warranty covers material quality and workmanship only.

Warranty does not cover product for issues caused by improper usage or any operation not in accordance with the specifications of this manual. Any modification or tampering with the product in any way voids the warranty.







**Great Circle USA**  
Support Line: 1-866-493-0524  
Email: [help@greatcircleus.com](mailto:help@greatcircleus.com)  
[www.greatcircleus.com](http://www.greatcircleus.com)  
[www.greatcircleca.com](http://www.greatcircleca.com)



US



CA

**Scan me to get more new products.**