



# Hand Crank Hose Reel Operator's Manual

---



**WARNING:**

Read carefully and understand all INSTRUCTIONS before operating. Failure to follow the safety rules and other basic safety precautions may result in serious personal injury. Save these instructions in a safe place and on hand so that they can be read when required. Keep these instructions to assist in future servicing.

---



## WARNING

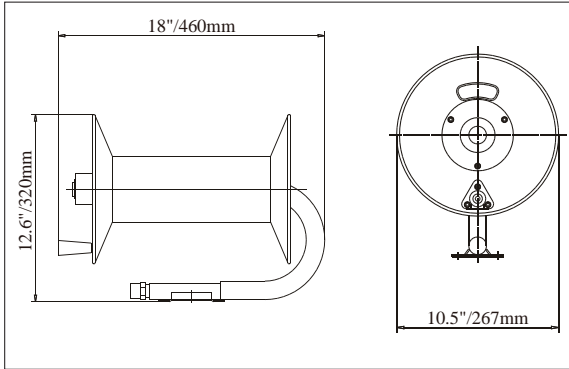


**WARNING:** The warnings, cautions, and instructions discussed in this instruction manual cannot cover all possible conditions or situations that could occur. It must be understood by the operator that common sense and caution are factors that cannot be built into this product, but must be supplied by the operator.

1. Maintain a clean and dry work area. Damp or wet work conditions can result in injury.
2. Keep children away from work area. This product is not a toy.
3. There are certain applications for which this equipment was designed. It will do the job better and more safely at the capacity for which it was intended. Do not modify this equipment, and do not use this equipment for a purpose for which it was not intended.
4. Check for damaged parts. Before using this product, carefully check that it will operate properly and perform its intended function. Check for damaged parts and any other conditions that may affect the operation of this product. Replace damaged or worn parts immediately.
5. Maintain proper footing and balance at all times to prevent tripping, falling, back injury, etc.

## TECHNICAL DETAILS

Item No.	Max. Working Pressure	Inlet/Outlet	Hose Capacity		
			Hose is not included	I.D.	Length
GUR060	300psi	3/8"		3/8"	100ft



Read the following precautions and instructions before you begin assembly, mounting or usage.

### SAFETY PRECAUTIONS

1. Make sure input pressure does not exceed the maximum rating of 300 PSI.
2. Use the proper eye protection when assembling and mounting this product and during usage of the hose reel.
3. Assemble the hose reel on a clean workbench free of debris and moisture.
4. Use soap and water when checking for air leaks.
5. Do not expose fingers or hands directly to a pressurized hose, or it will result in severe body injury.

### UNPACKING

When you receive your new Hose Reel, it will be mostly assembled.

The handle must be attached prior to usage.

Check to ensure that you have received the following loose parts.

Part No.	Description	Q'ty
20	Screw	3
21	Washer	3
22	Nut	3
23	Handle	1

### INSTALLATION

**Note:** You must purchase hardware & hose for mounting your new reel. Decide where you wish to mount reel before purchasing as the hardware needed will vary based upon location and desired mounting surface.

#### Refer To Appendix For Assembly

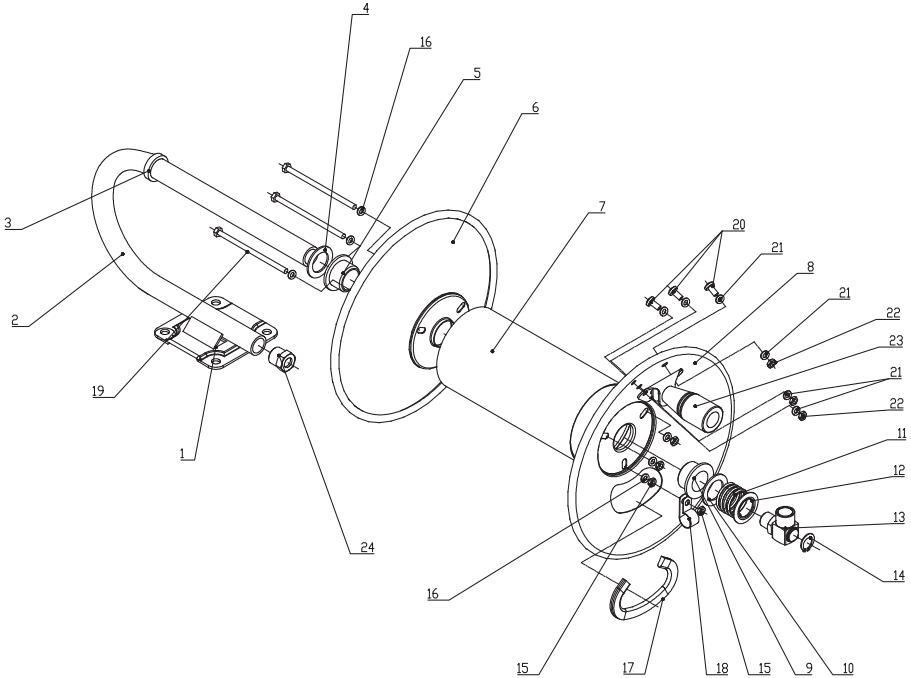
1. Match handle to 3 holes in reel flange. Attach using 3 screws, nuts and washers.
- Note:** Nuts must go on handle side of flange.
2. Put the bolts (3/8" or 10mm) through 4 holes in the base of the hose reel and tighten it to ceiling/wall/floor so reel can be fastened into position.
3. Apply teflon tape or thread sealant to reel's integrated supply hose fitting. Then attach the supply hose to the outlet of your air compressor.
4. Apply teflon tape or thread sealant to hose fitting threads. Attach to the reel swivel valve, then feed the rest of hose through the flange opening.

5. To avoid damaging the swivel valve, make sure to use an appropriate wrench to stabilize the swivel.
6. For the length of hose, please refer to TECHNICAL DETAILS on page 3.

## TROUBLE SHOOTING

Problem(s)	Possible Cause	Corrective Action
Fluid path (plumbing and/or Swivel) is leaking or damaged	<ol style="list-style-type: none"> <li>a) Maximum pressure rating for reel has been exceeded</li> <li>b) Application is not compatible with plumbing and/or swivel seal materials.</li> </ol>	<ol style="list-style-type: none"> <li>a) Replace or repair damaged components. Consult factory. Check maximum pressure rating of reel.</li> <li>b) Contact factory to determine chemical compatibility or environmental issues (i.e. temperature rating).</li> </ol>
Hose will not fully retract	<ol style="list-style-type: none"> <li>a) Outlet nozzle, gun or tool is too heavy.</li> <li>b) Spring is fatigued.</li> <li>c) Field installed hose is too long.</li> </ol>	<ol style="list-style-type: none"> <li>a) Add spring tension. See "Spring Tension Adjustment".</li> <li>b) Add spring tension. See "Spring Tension Adjustment". Replace Spring Canister if required.</li> <li>c) Call local distributor for correct specified hose length.</li> </ol>
Hose will not retract at all	Spring has lost all tension or has possibly broken	Reinstall Spring Tension
Reel will not latch	<ol style="list-style-type: none"> <li>a) Incorrect operation</li> <li>b) Dog Spring or locking cam is worn.</li> </ol>	<ol style="list-style-type: none"> <li>a) To latch the reel, pull out the hose and allow it to retract after hearing the first second or third "click".</li> <li>b) Replace dog spring or locking cam.</li> </ol>
Fluid leaks from swivel	<ol style="list-style-type: none"> <li>a) Swivel seals are damaged or worn.</li> <li>b) Inlet hose is not flexible.</li> </ol>	Replace swivel seals. See "Swivel Seal Replacement". Caution: Be sure leak is not at Hose Fitting!
Swivel assembly in not moving freely or locking up	Inlet hose is not flexible causing side force on swivel.	Properly tighten inlet hose. Hand tighten fitting, plus 1/2 turn with wrench.

# EXPLODED AND PARTS LIST



Part No.	Description	Q'ty	Part No.	Description	Q'ty
1	Base(welded with stand)	1	13	Swivel (including 2 valve & 2 O-ring)	1
2	Stand(steel pipe covered with foam protector)	1	14	Spring wahser	1
3	Fixed washer (welded on stand)	1	15	Nut	3
4	Washer	1	16	Washer	3
5	Positon sleeve	1	17	Protector (rubber)	1
6	Flange A	1	18	Clamp	1
7	Sleeve	1	19	Screw	3
8	Flange B	1	20	Screw	3
9	Position sleeve	1	21	Washer	3
10	Washer	1	22	Nut	3
11	Spring	1	23	Handle	1
12	Washer	1	24	Valve	1







Great Circle USA  
Support Line: 1-866-493-0524  
[help@greatcircleus.com](mailto:help@greatcircleus.com)  
[www.greatcircleus.com](http://www.greatcircleus.com)