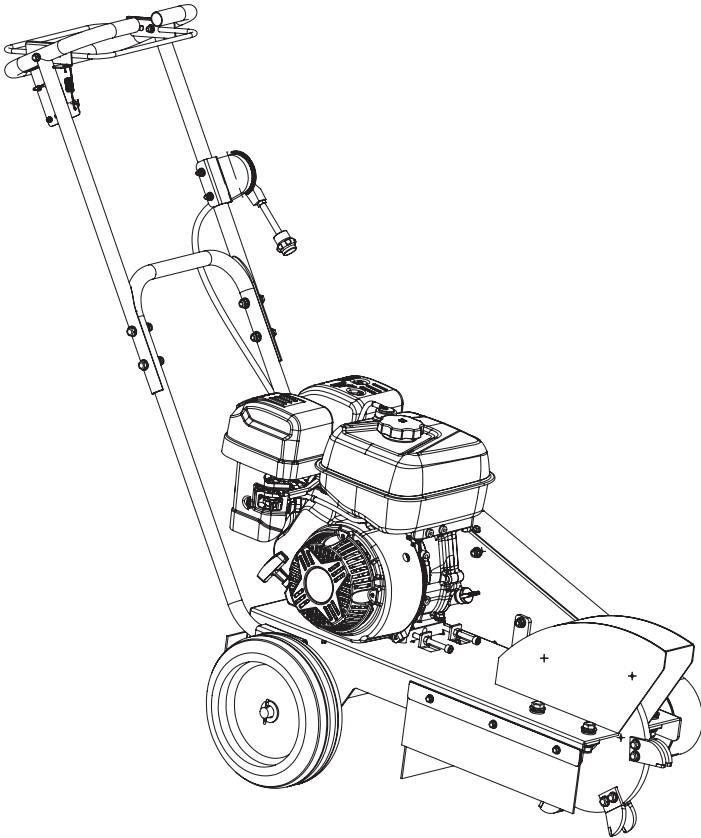




# Stump Grinder Operator's Manual

---



**WARNING:**

Carefully review and understand all INSTRUCTIONS prior to operating this device. Failure to follow the safety rules and other basic safety precautions may result in serious personal injury. Keep these instructions in a safe place and accessible so that they can be reviewed as required. Keep these instructions to assist in future servicing needs.

---

## **⚠️ WARNING**


The stump grinder is designed solely for outdoor operations and is capable of eliminating tree stumps and protruding root systems down to near ground level. By horizontally swaying the wheel across the stump's top and front, you can incrementally remove it. Before you start using the grinder, thoroughly read and understand the entire manual. Neglecting to operate or maintain the machine correctly could lead to severe injuries or even fatalities for both the operator and onlookers. Every machine carries inherent risks, and this stump grinder has its own specific dangers that you must be conscious of. If you own or operate this machine, it's your responsibility to be aware of these risks and how to mitigate them. Pay extra attention to these specific hazards in the manual.

Specifically, pay close attention to these key points:

- Know the positions of subterranean services such as power cables before starting.
- Only allow trained individuals to handle the equipment; keep untrained adults and children away.
- Wear appropriate eye gear and protective clothing to shield yourself from projectiles like stones and fragments.
- Ensure the grinder's blades are intact, well-sharpened, and firmly secured.
- Do not operate the grinder if disengaging the safety bar fails to shut off the engine.
- Maintain a safe distance of no less than 75 feet between the grinding operation and onlookers or children.
- Put protective barriers around cars, windows, and other valuables within a 75-foot radius to guard against flying particles.
- Be prepared for any sudden recoil from the machine when it first contacts the stump.
- Remain vigilant about the potential for carbon monoxide exposure.
- Exercise caution during fueling to avert fire or explosion risks.
- Do not attempt to make adjustments, clear jams, or clean the equipment when the engine is active.
- Avoid contact with the engine and exhaust to prevent burn injuries.
- Refrain from using the machine in conditions where slipping is likely, including wet or icy surfaces.

## **SAFETY SYMBOLS**

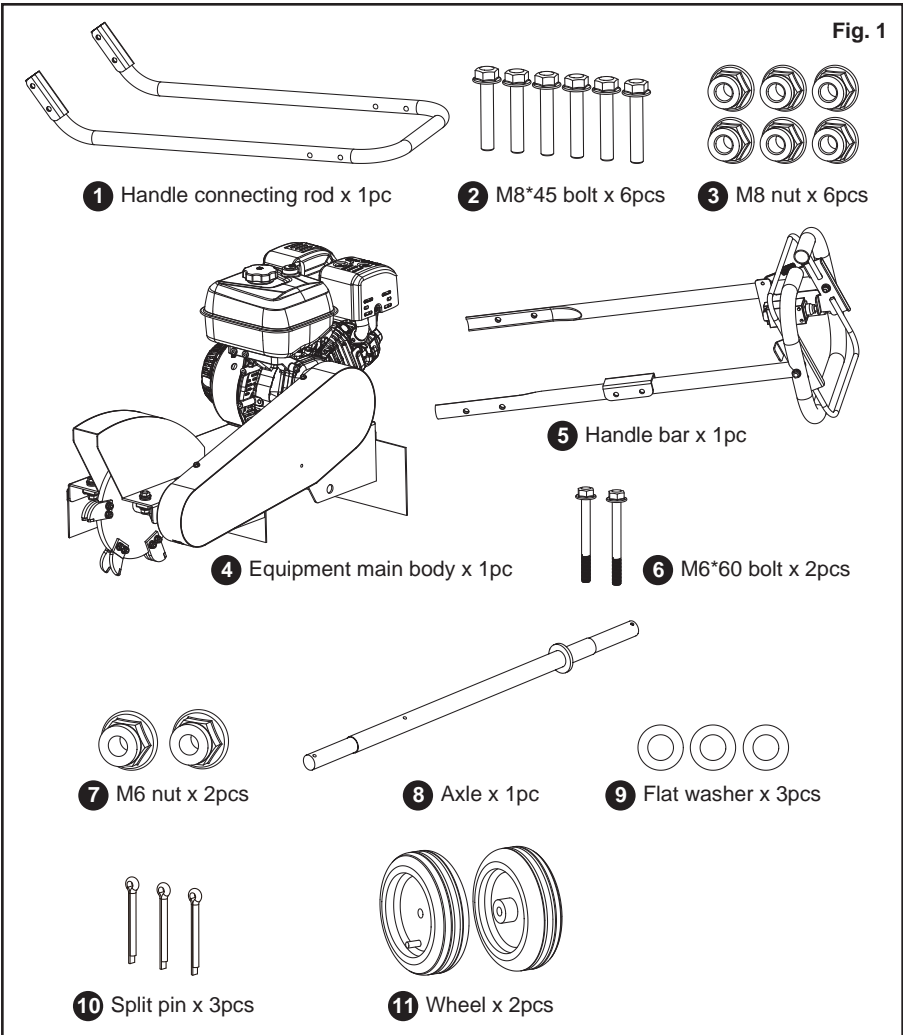
Please study the following symbols and learn their meanings. Proper interpretation of these symbols will help you to operate the product in a safe and responsible manner.

	Read these instructions carefully.		No smoking, sparks, or flames.
	Wear eye protection. Wear hearing protection.		Do not touch parts that are hot from operation. Serious burns may result.
	Wear protective gloves.		Keep your feet clear from all rotating parts.
	Wear safety footwear.		Be aware, objects may be thrown while in use.
	Do not remove or tamper with the protection and safety devices.		Keep children and bystanders off and away.

# TECHNICAL SPECIFICATIONS

SKU#	GUO110
Engine Displacement	274CC
Start Type	Recoil
Transmission	belt drive
Wheel	10"
Cutter Disc Size	13.5"
Rotation Speed	3600 RPM
Grinding Depth	12"

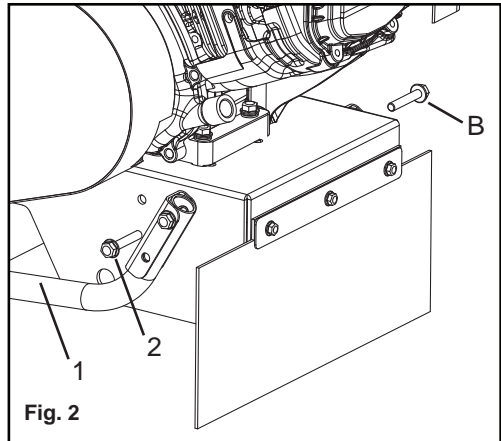
# MAIN COMPONENTS



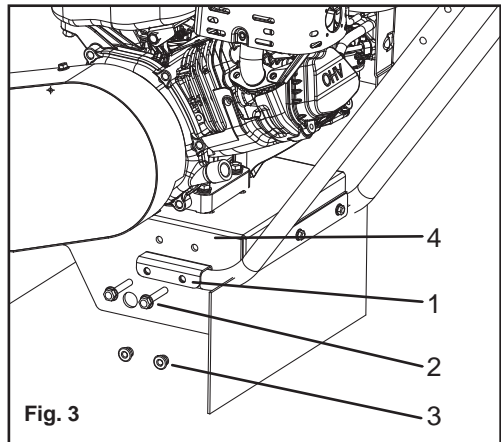
## ASSEMBLY

### 1. Handle Bar (Fig. 2)

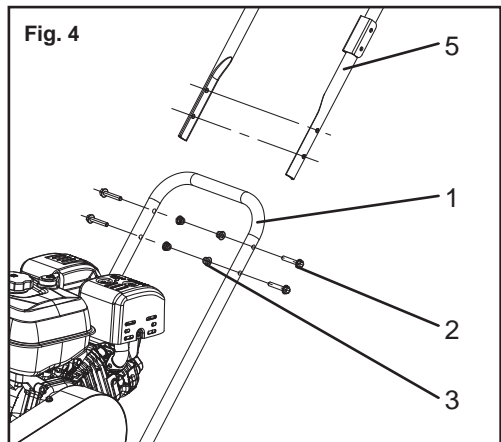
- (1) Remove the two mounting bolts (2) from the handle connecting rod (1). After lifting the front end of the equipment, the handle connection can be removed.



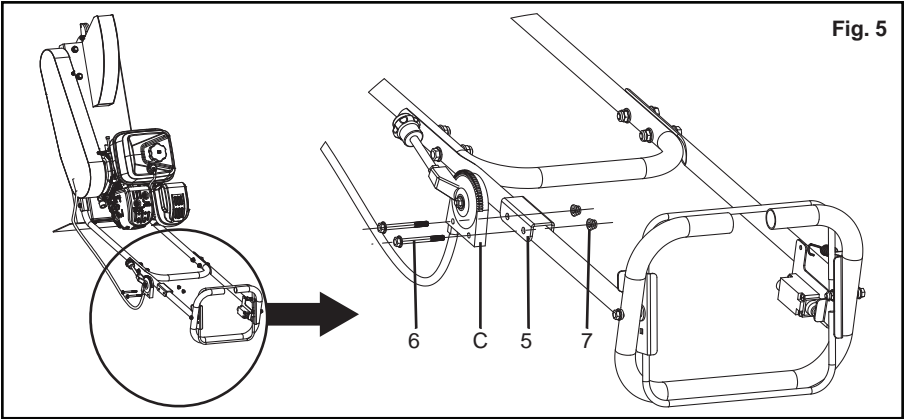
- (2) Place the handle connecting rod (1) onto the main body of the equipment (4). Use 4 M8x45 bolts (2) and 4 M8 nuts (3) for installation (insert the nuts from the bottom of the equipment main body). (Fig. 3)



- (3) Insert the handle bar (5) into the handle connecting rod (1) and secure using 4 M8x45 bolts (2) and 4 M8 nuts (3). (Fig. 4)



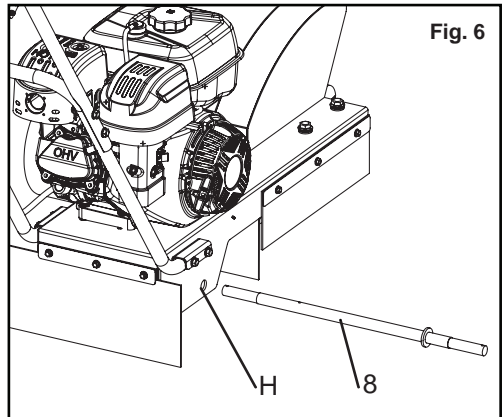
(4) Using 2 M6x60 bolts (6) and 2 M6 nuts (7), install the clutch handle (C) onto the handle bar (5) as shown in the illustration. **(Fig. 5)**



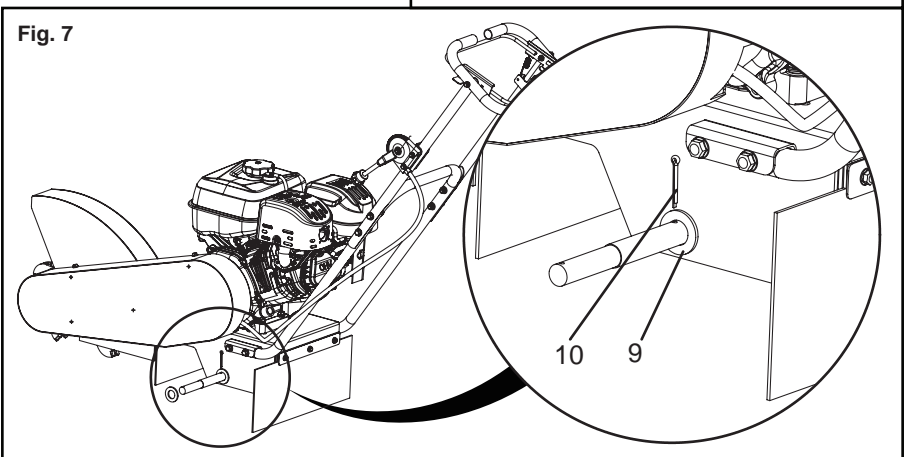
**Fig. 5**

## 2. Wheel

(1) Insert the wheel axle (8) completely through the equipment's left-side mounting hole (H) as shown in the illustration. Secure it on the right side using 1 cotter pin (9) and 1 flat washer (10). **(Fig. 6 & Fig. 7)**



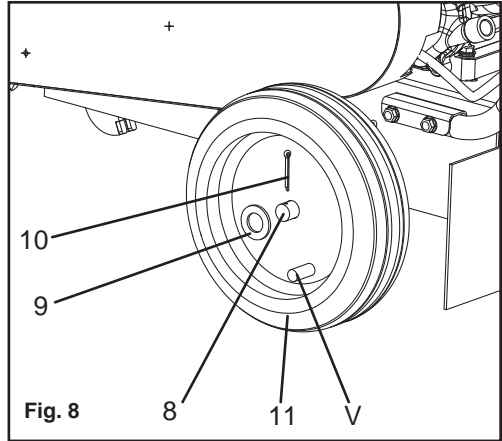
**Fig. 6**



**Fig. 7**

- (2) Attach the 2 wheels (11) to both ends of the wheel axle (8). Secure them using 2 cotter pins (10) and 2 flat washers (9).

**Note:** After installation, ensure the wheel inflation valve (V) is on the outer side of the wheel; do not install the wheels in reverse. (Fig. 8)



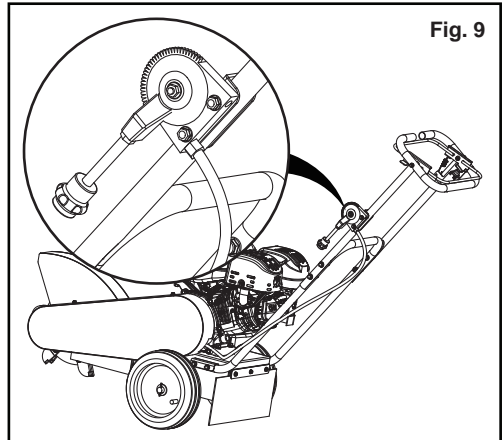
## OPERATION

**CAUTION:** Add engine crankcase oil. A new engine is shipped without oil. You must add the correct amount of oil to engine crankcase or engine will be damaged beyond repair.

Before starting the engine you must make sure you have completed the following:

1. Clearing Area of People and Objects
2. Marking Underground Utilities
3. Wearing Personal Protection
4. Checking/Adding Oil
5. Filling Stump Grinder Gasoline Tank
6. Inspecting Fuel System for Leaks
7. Checking Controls

**Notice:** make sure the handle clutch controller is in the released position. (Fig. 9)

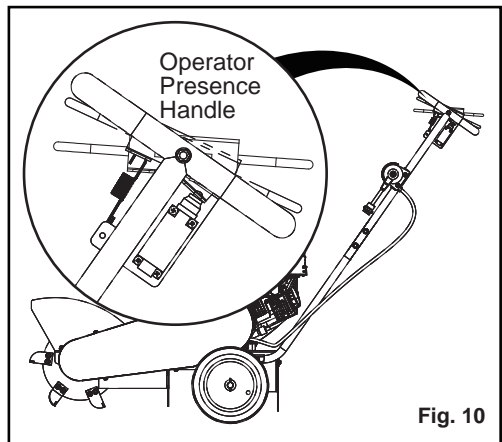


### 1. Start the engine. (Fig. 10)

When starting the engine, you must squeeze the operator presence handle. During operation, you need to continue squeezing the operator presence handle. Once you release operator presence handle the engine will stop working.

**Notice:** The operator presence handle is not a throttle lever, the throttle control needs to be adjusted on the engine.

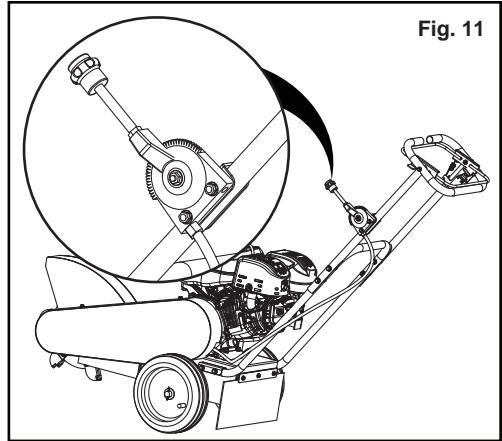
**Note:** For more information on engine operations, please refer



## 2. Pull the clutch tight

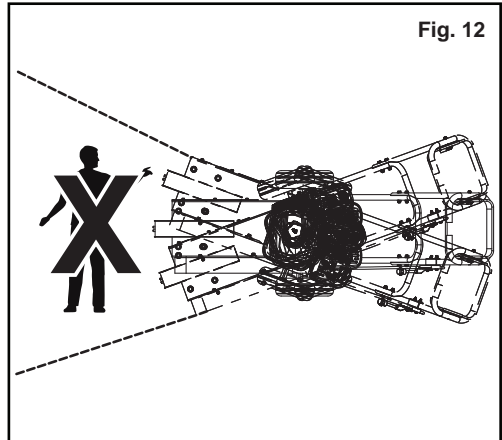
After starting the engine, pull the handle clutch controller tightly to make the cutter disc rotate. Now you can start working.

(Fig. 11)



**WARNING:** When the equipment is operating, do not stand directly in front of the cutter disc to avoid injury from flying wood chips.

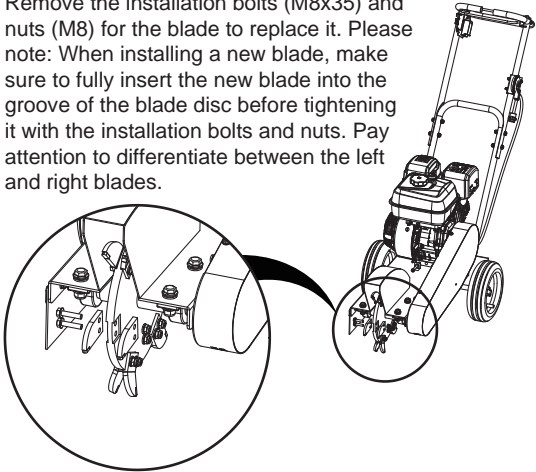
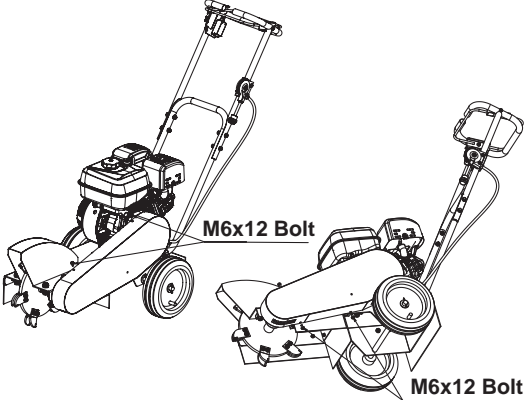
(Fig. 12)



## MAINTENANCE AND STORAGE

**WARNING:** Read and follow these safety rules whenever you will be servicing the grinder:

- Turn off grinder. Always turn off grinder and make sure the engine is cool before working on the engine or grinder.
- Repair. Major service, including the installation or replacement of parts, should be performed only by a qualified electrical service technician.
- Replacement parts. If a part needs replacement, only use factory approved repair parts. Replacement parts that do not meet specifications may result in a safety hazard or poor operation of the grinder and will void the warranty.

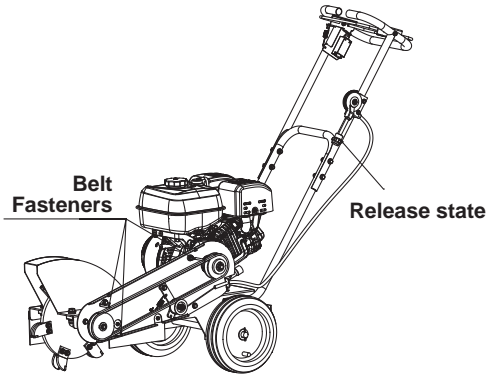
MAINTENANCE	
Perform engine maintenance	Perform engine maintenance as specified in the engine owner's manual. Follow your engine manual for further information.
Cutter teeth replacement	<p>Remove the installation bolts (M8x35) and nuts (M8) for the blade to replace it. Please note: When installing a new blade, make sure to fully insert the new blade into the groove of the blade disc before tightening it with the installation bolts and nuts. Pay attention to differentiate between the left and right blades.</p> 
Belt tension replacement	<p>1. Remove the four fixing bolts (M6x12) from the belt cover, and then remove the belt cover.</p> 



## MAINTENANCE

### Belt tension replacement

2. Adjust the handle clutch controller to a release state; you can then begin to replace the belt. (Note: You can loosen three belt fasteners, which will make replacing the belt easier.)



### Lubricate

Cutter shaft bearings should be greased. The cutter shaft bearing is greased by pumping grease into zerks located on the housing of the bearing.

The wheels should be greased by repacking the bearings inside the wheel hub with grease.

## STORAGE

When you are finished using the grinder and it has cooled, you must:

- Cool engine before storage.
- Clean the grinder.
- Inspect for worn or damaged parts.
- Choose covered storage location.
- Prevent accidental starting.
- Plan on exercising the engine at least monthly unless the grinder is prepared for long-term storage.

## TROUBLE SHOOTING

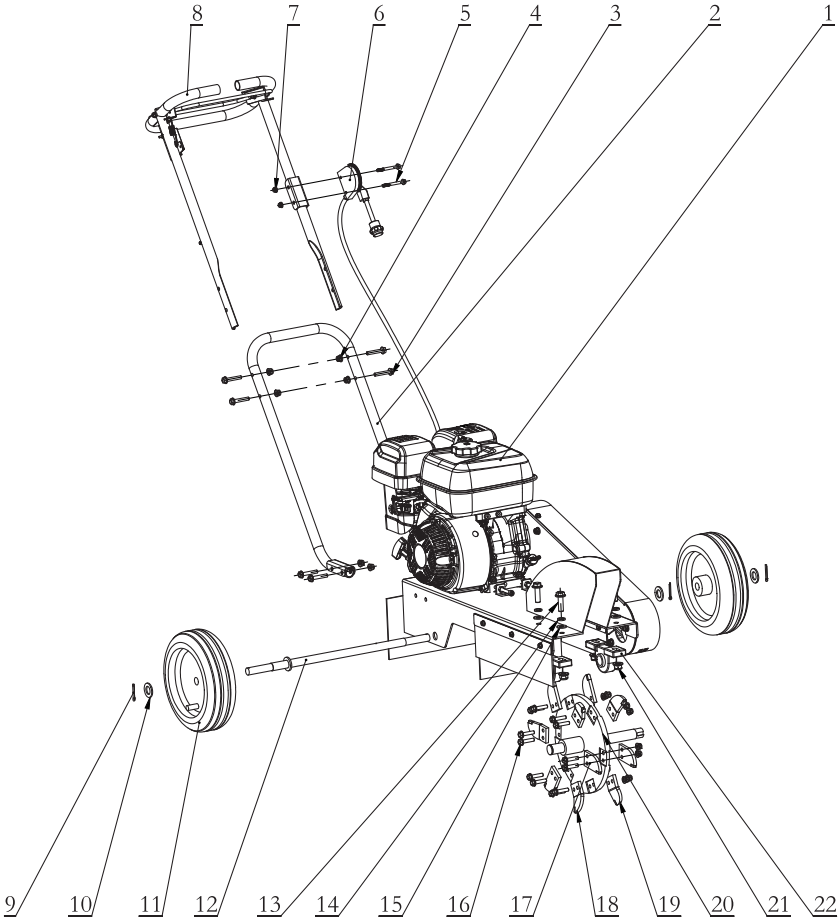
Problem	Possible Solution
Engine won't start	<ol style="list-style-type: none"><li>1. Make sure you squeeze the Operator presence handle.</li><li>2. Check Engine oil level</li><li>3. Check Gas level</li><li>4. Follow your engine manual for further trouble shooting.</li></ol>
Unit vibrates	<ol style="list-style-type: none"><li>1. Check your cutters for missing or loose teeth</li><li>2. Check your cutter wheel pillar rear mounting bolts</li></ol>
Belt coming off.	<ol style="list-style-type: none"><li>1. Pulleys not aligned.</li><li>2. Belt tension is insufficient. Adjust belt tension.</li></ol>
Belt engages late or slips.	<ol style="list-style-type: none"><li>1. Reduce cutting depth.</li></ol>
Belt not staying tight after adjustment	<ol style="list-style-type: none"><li>1. Check for damage on the axle and pulley. Make sure that the setscrews are properly tightened.</li><li>2. Replace damaged parts.</li></ol>
The cutting wheel does not rotate.	<ol style="list-style-type: none"><li>1. Belt tension is insufficient. Adjust belt tension.</li><li>2. Clutch is worn - replace shoes and springs, and/or clutch bearings.</li></ol>

**Note: Follow your engine manual for further engine troubleshooting.**

## WARRANTY

The product comes with a 1-year warranty for residential use. For commercial use, the warranty period is limited to 90 days. Warranty period starts from the product purchase date. Warranty covers material quality and workmanship only. Warranty does not cover product for issues caused by improper usage or any operation not in accordance with the specifications of this manual. Any modification or tampering with the product in any way voids the warranty.

# EXPLODED AND PARTS LIST



No.	Description	Qty.	No.	Description	Qty.
1	Equipment main body	1	12	Wheel axle	1
2	Handle connecting rod	1	13	Bolt M12x40	4
3	Bolt M8x45	6	14	Φ12 standard elastic washer	4
4	Nut M8	18	15	Φ 12flat washer	4
5	Bolt M6x60	2	16	Bolt M8x35	12
6	Handle clutch controller	1	17	Middle blade	6
7	Nut M6	2	18	Right blade	3
8	Handle assembly	1	19	Left blade	3
9	Cotter pin	3	20	Cutter disc assembly	1
10	Φ20 flat washer	3	21	Nut M12	4
11	Wheel	2	22	Vertical bearing seat	2



**Great Circle USA**

Support Line: 1-866-493-0524

Email: [help@greatcircleus.com](mailto:help@greatcircleus.com)

[www.superhandyus.com](http://www.superhandyus.com)