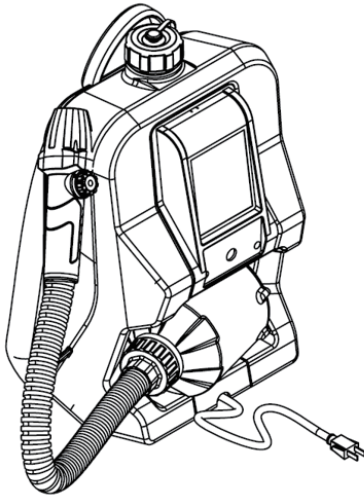
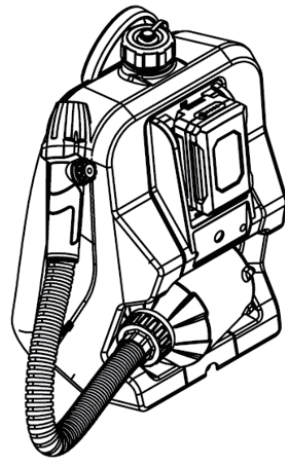




Backpack Fogger Operator's Manual



AC



DC



WARNING:

Thoroughly review all **INSTRUCTIONS** before operating. Failure to follow the prescribed safety guidelines and other safety precautions may result in serious personal injury.

Save these instructions in a safe place and on hand so that they can be read when required.

Keep these instructions to assist in future servicing.



WARNING

Before using our product, please read this instruction manual carefully. If there is any doubt or questions, please contact our company directly (1-866-493-0524). We are free from any accident due to improper operation when using this product. Failure to observe these instructions could lead to serious injury or death.

1. NO direct spraying of highly toxic pesticides, undiluted pesticides, banned pesticides and special chemicals. Operator must comply with the safety instructions provided by the pesticide manufacturers.
2. Per Safety and Security guides the reservoir tank cannot be used to hold inflammable, explosive, or highly volatile special chemicals, such as gasoline, alcohol, phenylacetone etc. highly corrosive liquids, such as caustic soda solution, hydrochloric acid etc. are also prohibited. Usage of such materials in the reservoir tank may result in injury or fire and other major safety concerns. (Warning: Keep the machine and hands dry when operating the device or turning on the power switch, to avoid electric shock.)
3. The machine can only be operated by a person who is familiar with the performance and operation method, and has the knowledge of relevant safety operation, the following personnel operation is PROHIBITED strictly.
 - 3.1 Children or the elderly.
 - 3.2 Mental illness or sick deformed and weak people.
 - 3.3 Drinking people.
4. This Sprayer is not designed for usage with insoluble powders. Solid matter will clog the screen and hose as well as the pump. Do not use high-resistance and very toxic pesticides for pest control purposes on plants, trees.
5. Don't spray towards others' face.
6. Do not operate sprayer in temperatures exceeding 113°F(45°C) or lower than 14°F(-10°C)
7. Trial spraying with clean water is necessary for initial use to make sure no leakage or poor atomization occurs.
8. Do not operate this sprayer near fire or expose the electronic parts to water or immerse the sprayer in water to clean or to fill it.
9. Wear proper PPE such as mask and gloves to protect skin and to avoid direct contact with pesticides or harmful liquids. Do not spray pesticides against the wind of spray towards humans, animals or food. Do not operate for extended periods of time under high temperatures.
10. After spraying, please be sure to handle the waste according to the instructions provided by the pesticide manufacturer to protect the environment.

TECHNICAL DETAILS

Type	AC (Corded)	DC (Battery Pack)
Tank Capacity	3Gal. (11.5L)	3Gal. (11.5L)
Rated Voltage	120V~ 60Hz / 230V~ 50Hz AC	48V DC
Motor Power	2HP (1.4KW)	1/2HP (350W)
Particle Size	0-50µm	0-50µm
Max. Flow Rate	0.2Gal./min. (750ml/min.)	0.17Gal./min. (670ml/min.)
Horizontal Coverage	26ft.	26ft.

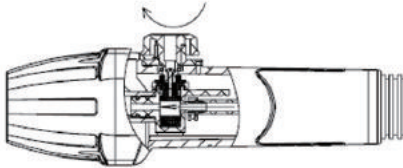
APPLICATION

The sprayer has the advantages of high efficiency, uniform droplet, long spray range, supported by a high-performance motor, stable performance, reliable and durable design. It's target application is towards large area spraying operations such as a greenhouse. It can also be used for Public Sanitation and Disinfection, such as airports, docks, hotels, restaurants, hospitals, public transport, theaters, community &, entertainment venues, as well as in food processing areas, pharmaceutical companies, animal husbandry industry disinfection and sterilization for health and epidemic mitigation.

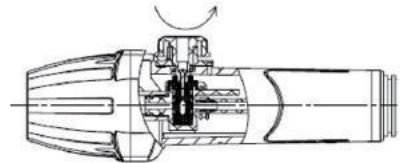
OPERATION

(AC&DC)

1. Preparation: Plug into power, or insert battery, turn on the power switch to check the motor if running
2. Add the chemical after filtered with the filter funnel, tighten the tank lid as required.
3. Turn on the power supply and valve, the fogger starts working.
4. Turn off the power supply and valve, the fogger stops working.
5. During the sprayer operation, the high-speed flow will cause the nozzle and pipe to heat up. This is a normal operating phenomenon.

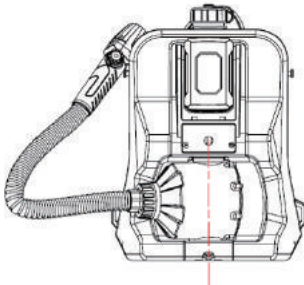


Turn on the power supply and valve

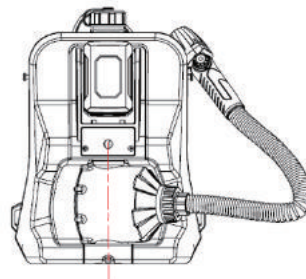


Turn off the power supply and valve

The direction of the nozzle can be adjusted



Left-handed operation



Right-handed operation

⚠ WARNING

USE DIRECTION

1. The power supply voltage should match the machine's requirements.
2. DO NOT pull out the plug by tugging it out via the cord. DO NOT kink the power cord and remove any knots in the cord before storage after each usage. Take care to avoid sharp objects that may scratch or damage the cable insulation layer and cause power shorts.(AC)
3. DO NOT bend or fold the pipe. Avoid sharp edges and corners, and do not allow any objects to puncture or damage the flow the pipe.
4. DO NOT turn on and off power switch frequently, avoid damage the switch and motor.
5. If there is any abnormal sound during operation, shut down immediately, cut off the power, and contact professional personnel for repair. If cannot resolve the problem locally, please contact our company directly (1-866-493-0524). Any tampering or repair performed by non-licensed professionals will void the warranty.

BATTERY USE AND CARE WARNINGS (DC)

1. Battery must be fully charged before first use.
2. Plug the charger into a 110-240 AC outlet, a red light should appear on the charger. Charge the battery until the light on the charger turns solid green.
3. Always charge the battery at room temperature. If the battery is used in a cold environment, allow it to warm up for at least an hour before charging. Cold batteries will not charge completely and battery components may be damaged in the process.
4. Only charge battery in well ventilated area away from flammable materials such as cloth or carpeting or any flammable liquids.
5. To disconnect charger, remove the plug from outlet, then disconnect the charger from the battery.
6. DO NOT leave the charger being connected to the battery for more than 24 hours.
7. The battery status indicator is mounted on the top of the battery to allow you to observe the level of the battery power while in use. To check the charge level, simply press the indicator button. The lights on the status indicator show the charge level of the battery.
8. If battery becomes warm or hot during charging procedure, disconnect it from charger. Allow battery to return to room temperature and attempt to charge again. If this persists a second time, disconnect battery from charger and contact customer service.
9. Battery Maintenance Responsibility: Fully charge and discharge the battery at least once every 8 months to maintain battery's health.
10. Store the battery on a full charge.
11. When battery pack is not in use, keep it away from paper clips, coins, keys, nails, screws, or other small metal objects that can make a connection from one terminal to another. Shorting the battery terminals together may cause burns or fire.

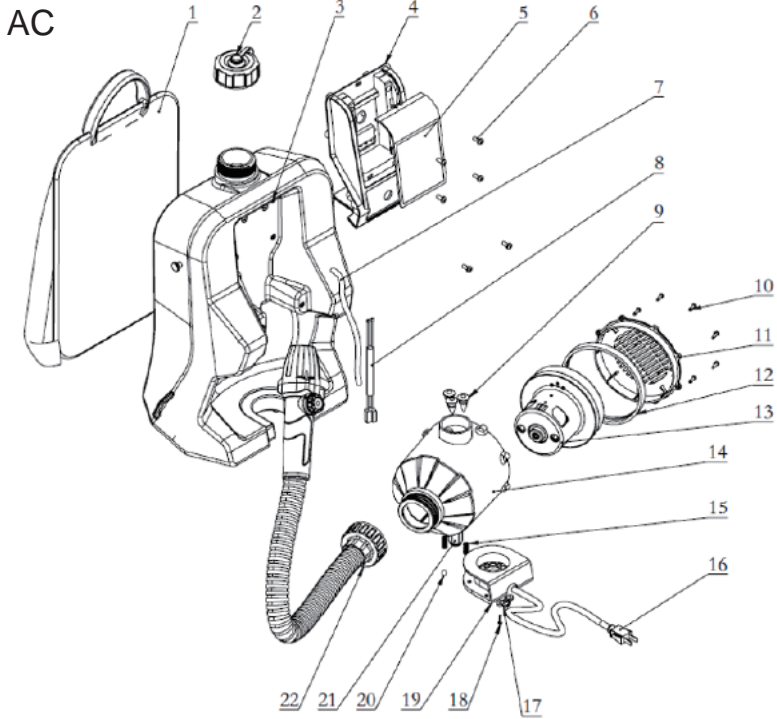
TROUBLE SHOOTING

Problem	Possible Cause	Corrective Action
Fan not running.	Power supply is not connected.	1. Check battery whether there is electricity. 2. Whether the power switch is on or not.
Machine run, no spray.	1. Chemical tube or valve blocked. 2. Chemical tube or tank inflatable tube folded. 3. Chemical tube fell off. 4. The air inlet blocked.	1. Clean up or replace. 2. Check and correct the chemical tube or tank inflatable tube. 3. Reset the chemical tube. 4. Clean up and clear the air inlet.
Intermittent spray, Reduced spray.	1. Feed tube blocked, 2. Feed tube folded or kinked. 3. Feed tube damaged. 4. Feed tube detached.	1. Clean the feed tube. 2. Do not kink or bend the chemical tube. 3. Replace the chemical tube. 4. Reattach the chemical tube.
Machine abnormal sounds.	1. The air inlet blocked. 2. Motor bearing damaged	1. Clean up and clear 2. Repair or replace the motor.
Poor atomization, spray nozzle dripping.	The air inlet blocked.	Clean up and clear.
Sprayer temperature too high.	1. Continuous working too long. 2. Supply voltage not match. 3. The air inlet or outlet blocked. 4. The motor worn might need replacement.	1. Stop working for a while. 2. Select suitable voltage. 3. Clean up and clear. 4. Repair or replace the motor.

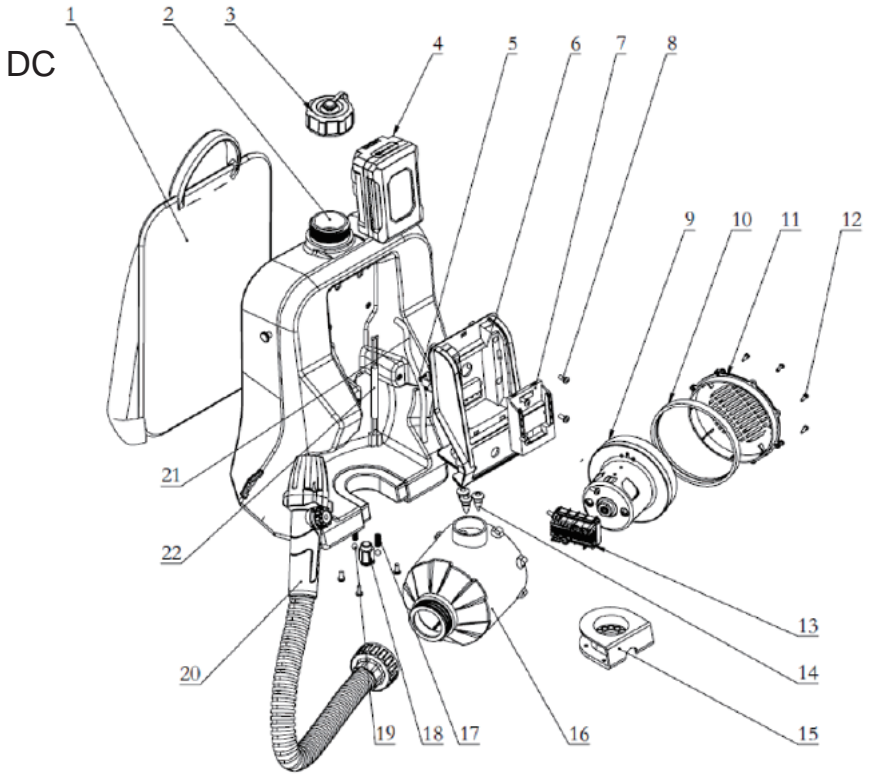
MAINTENANCE AND STORAGE

1. If unit is not used for long time, in high humidity environment or in hot and rainy environment, unit should always be turned on occasionally for warm-up to eliminate humidity, prevent internal corrosion damage.
2. If storing unit for the season, please keep in dry and cold place, do not let children play the product, this is not a toy.
3. After usage, flush the tank with clean water. If spraying herbicides, please add a small amount of detergent to clean completely. When finish spraying, the sprayer should be clean and stored in dry and cold place. Keep away from direct sun light which will acceleratee plastic aging.

EXPLODED AND PARTS LIST



Part No.	Description	Q'ty	Part No.	Description	Q'ty
1	Strap	1	12	Fan seal	1
2	Barrel cover	1	13	AC fan assembly	1
3	Barrel body	1	14	Fan housing	1
4	Battery holder	1	15	Spring	2
5	Battery cover	1	16	Plug wire assembly	1
6	Screw	10	17	Line card	1
7	Ventilation pipe	1	18	Screw	2
8	Connector	1	19	Base	1
9	Rubber plug	3	20	Steel ball	2
10	Screw	8	21	Line card	1
11	Fan back cover	1	22	Sprinkler components	1



Part No.	Description	Q'ty	Part No.	Description	Q'ty
1	Strap	1	12	Screw	8
2	Barrel body	1	13	Controller	1
3	Barrel cover	1	14	Rubber plug	3
4	Battery	1	15	Base	1
5	Plug	1	16	Fan housing	1
6	Battery holder	1	17	Spring	2
7	Card slot	1	18	Line card	1
8	Screw	10	19	Steel ball	2
9	DC fan assembly	1	20	Sprinkler components	1
10	Screw	1	21	Ventilation pipe	1
11	Fan back cover	1	22	Connector	1



Great Circle USA
Support Line: 1-866-493-0524
help@greatcircleus.com
www.greatcircleus.com