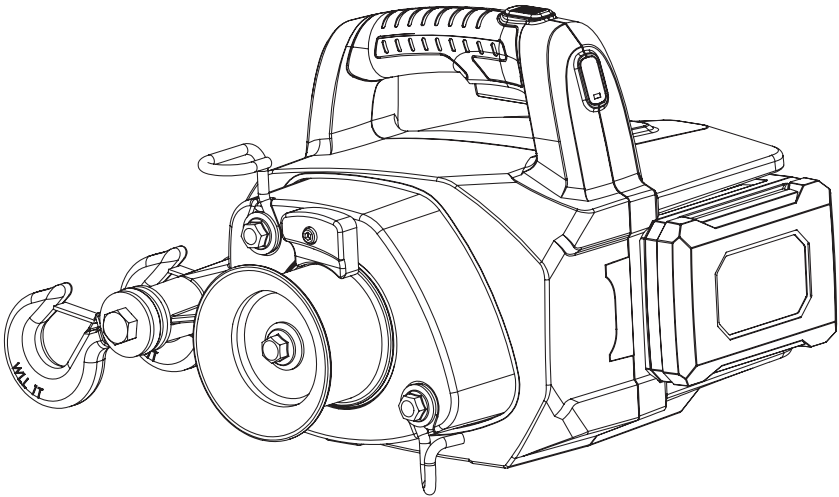




Portable Winch Operator's Manual



WARNING:

Read carefully and understand all INSTRUCTIONS before operating. Failure to follow the safety rules and other basic safety precautions may result in serious personal injury. Save these instructions in a safe place and on hand so that they can be read when required. Keep these instructions to assist in future servicing.



IMPORTANT SAFEGUARDS

For your own safety, please always follow the following basic precautions when using this product. Failure to observe these instructions could lead to serious injury or death.

WARNING

CHEMICAL AND FIRE HAZARD

1. Always Know Your Pulling Tool. Take time to fully read the Installation and Operator's Guide, in order to understand your pulling tool and its operations.
2. Always wear gloves, eye and ear protection.
3. Never store battery pack in a tool box or pocket with nails, screws, keys, etc. Shorting of battery terminal may cause fire.
4. Always avoid contact with battery leakage, which may occur under extreme usage or temperature conditions.
5. Always dispose or recycle battery according to local ordinances I regulations.
6. Always protect terminals with insulating tape, prior to disposal, to prevent shorting.
7. Never attempt to disassemble the battery. No user serviceable parts are inside.
8. Never charge damaged battery packs, replace damaged pack immediately. Battery short or fire may result.
9. Never incinerate the battery pack even if it is severely damaged or is completely worn out.
10. Never operate pulling tool in an environment containing explosive or combustible material.
11. Always remove the battery when the unit is not in use.
12. Never charge damaged battery packs, replace damaged battery pack immediately. Battery short or fire may result.
13. This product is not waterproof, please do not use it in water environment.

ELECTRICAL HAZARD

1. Always use properly grounded single phase receptacle protected by a ground fault circuit interrupter (GFCI).
2. Never remove ground pin from plug.
3. Never route electrical cables across sharp edges.
4. Never route electrical cables through or near moving parts.
5. Never route electrical cables near parts that become hot.
6. Never remove electrical cover from battery charger.
7. Never leave the puling tool power cord plugged in when installing, rigging, servicing or when the puling too is not being used.
8. Never operate charger if it has received a sharp blow, been dropped or otherwise damaged in any way.

9. Never charge battery in damp or wet environment.
10. Always charge battery at temperatures between 32°F-120°F .
11. Always store battery at temperatures between 32°F-86°F .
12. Always disconnect charger when battery is fully charged.
13. Never probe with conductive object.
14. Always fully charge battery before use.
15. Never completely discharge battery.
16. Always charge battery every six months if not in use.

CUT AND BURN HAZARD

To avoid injury to hands and fingers:

1. Always wear gloves, eye and ear protection.
2. Never short battery terminals because it may cause sparks or burns.

FALLING OR CRUSHING HAZARD

1. Never use pulling tool to secure a load.
2. Never shock load rope. Shock load can damage, overload and break rope.
3. Never use the pulling tool s rope to tow another vehicle or object. Impact loading during towing can exceed rope strength.
4. Always be certain the anchor you select will withstand the load and the strap or chain will not slip.
5. Always take time to use appropriate rigging techniques for pulling/lifting.
6. Never exceed pulling tool or rope capacity listed on product data sheet.
7. Never exceed the maximum pulling capacity as 1000 lb.
8. Only use low-stretch rope. Minimum diameter: 3/8". Maximum diameter: 1/2".
9. Always use suitable anchor point capable of handling load.
10. Always use factory approved mounting hardware, components, and accessories.
11. Always avoid on/off cycles (jogging or plugging) puling tool This can damage motor controls and rope.
12. Always use a hook with a latch.
13. Always ensure hook latch is closed and not supporting load.
14. Never apply load to hook tip or latch. Apply load only to the center of hook.
15. Never use a hook whose throat opening has increased, or whose tip is bent or twisted.
16. Never use bungee straps that develop tremendous and potentially dangerous amounts of force when stretched.
17. Always avoid side pulls which can pile up rope at one end of the drum. This can damage rope or pulling tool.
18. Never use puling tool to lift or move persons.
19. Warning make sure that your clothes are not going to get caught into the.
20. Danger never pull rolling objects that might roll out of youar control.
21. Caution do not touch the capstan drum immediately after operation as it will get hot and burn bare skin.
22. Caution visually inspect your rope before each usage. If it shows any sign of deterioration (cut strands, excessive abrasion) replace it.

MOVING PARTS ENTANGLEMENTHAZARD GENERAL SAFETY

1. Always Know Your Pulling Tool. Take time to fully read the Instructions and/or Operations Guide, in order to understand your pulling tool and its operations.
2. Never operate this puling tool when under the influence of drugs, alcohol or medication.

PULLING SAFETY

1. Always keep pulling tool and pulling/lifting load in sight during pulling/lifting operation.
2. Always require operators and bystanders to be aware of rope and load.
3. Always be aware of stability of load during pulling lifting, keep others away. Alert all bystanders of any unstable condition.
4. Never touch rope or hook while someone else is at the control switch or during pulling/lifting operation.
5. Never touch rope or hook while in tension or under load.
6. Always inspect rope, hook, and slings before operating pulling tool. Frayed, kinked or damaged rope must be replaced immediately. Damaged components must be replaced before operation. Protect parts from damage.

OPERATIONAL SAFETY

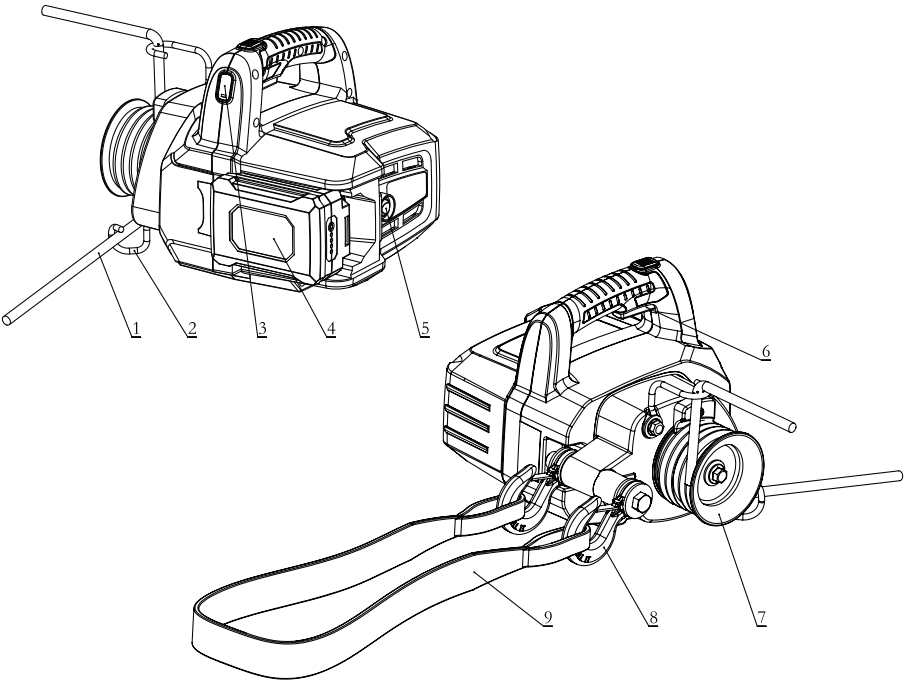
1. Always stand clear of rope and load and keep others away while pulling/lifting.
2. Always remove any element or obstacle that may interfere with safe operation of the pulling tool.
3. Never leave the pulling tool power cord plugged in when installing, rigging, servicing or when the pulling tool is not being used.
4. Always use extreme caution when handling hook and rope during spooling operations.
5. Never operate or install a pulling tool without reading or understanding the operator S manual.
6. Never operate this pulling unit if you are under 16 years of age.

SPECIFICATIONS

Item No.	Description	Power	Volt	Max. Pulling force	Rope size	Size	Net/Gross weight
GU0076	Portable Winch	DC48V,2Ah	1296W	1000Lb	0.39in-0.47in	13.3"x13.5"x9.7"	23.4/26 lbs

STRUCTURES

1. **Pulling rope:** Connect the objects for winching.
2. **Guide Hook:** Guide the rope wrapping on the capstan drum.
3. **Power indicator:** The display is light up when power on.
4. **Lithium battery:** 2AH or option 4AH lithium battery to be equipped.
5. **Power switch:** Turn on/off the power supply. The power will auto shut down within 10 minutes while no operation.
6. **Start button:** Press/release the control traction tool to start/stop. With power on, press the start button and the tool will continue to work and press again to stop working.
7. **Capstan drum:** Wrap the rope around the drum, the more laps kept on the drum, the greater friction force make the winching less slip.
8. **Safety Hook:** Connect with the sling and fix the pulling tool.
9. **Sling:** Go around the anchor point with the sling.



READY FOR OPERATION

Charger use

1. Be sure to fully charge the battery before first use.
2. Do not use this charger to charge other batteries. Other types of batteries may burst, causing damage and personal injury.
3. Do not operate the charger when the power cord or plug is damaged. Please replace immediately.
4. Do not use other types of chargers to charge this battery.

Battery Charging and Monitoring

1. Battery must be fully charged before first use.
2. Plug the charger into a 110-240AC outlet.
3. Always charge the battery at room temperature. If the battery is used in a cold environment, allow it to warm up for at least an hour before charging. Cold batteries will not be charged completely and battery components may be damaged.
4. Only charge battery in well-ventilated area away from flammable materials such as cloth or carpeting.
5. During the charging phase, the light on the charger is red. When the battery is completely charged, the light will turn to green.
6. To disconnect charger, remove the three-pronged plug from outlet, then disconnect the charger from the battery.
7. DO NOT leave the charger being connected to the battery for more than 24 hours.
8. The battery status indicator is mounted on the top of the battery to allow you to observe the level of the battery power while in use. When all the 3 green lights and 1 red light are lit, it means the power is sufficient. When only the red light is lit, it means it needs to be charged immediately. To check the charge level, simply press the indicator button. The lights on the status indicator show the charge level of the battery.
9. Completely draining the battery may damage the battery components and increase the likelihood of battery malfunction, battery fire, or even explosion.
10. If battery becomes warm or hot during charging procedure, disconnect it from charger. Allow battery to return to room temperature, and attempt to charge again. If this persists a second time, disconnect battery from charger and contact customer service.

Overload protection

Exceeding traction load will lead to controller protection, thus interrupting the power supply of the motor. This prevents overheating and potential motor damage. When load-exceeding controller trips, do not attempt to impose the same load. The weight of the load should be reduced and the traction tool can be restarted after power failure.

MAINTENANCE

Please check whether the rope and hook have signs of wear or damage before and after each operation. Wear and damaged parts must be replaced. Do not attempt to pulling out or repair damaged ropes.

Always keep the electrical terminals on the battery pack clean and make sure that the battery is not broken or damaged.

If there are twists, incisions, worn parts and broken strands in the traction rope, please stop using them.

WINCH USAGE

1. Using the polyester sling (included with the winch)

Go around the anchor point with the sling. Insert each end of the sling in one of the safety hooks located on the winch (Figure 1 below).

2. Position the winch in line with the load. When the winch is under tension, it will try to align itself with the load. The friction of the sling against the anchor point could prevent correct alignment. If that is the case, release the tension on the rope and position the sling on the anchor point so that the tension is equally distributed on both winch anchor hooks.

CAUTION don't do this! When you anchor the winch, make sure that you do not do a complete wrap around the anchor point (Figure 2 below). This set-up will prevent proper alignment of the winch with the load and will put uneven tension on the winch anchor hooks.



Fig.2

CAUTION Avoid Installing The Sling On Sharp Edges That Might Damage It. Whether You Are Using A Post, A Tree Or A Stump, Always Install The Sling Near The Anchor's Base.

ROPE INSTALLATION

The great variety of situations encountered when winching prevents us from providing specific instructions; however you need to consider the following points:

1. Rope

Use a low stretch rope, in good condition, with a minimum diameter of 3/8" and a maximum diameter of 1/2", with good knots. Use pulleys to redirect the rope and to multiply the pulling capacity when the load is near or over the pulling capacity of the winch.

2. Pulley

Using a pulley at some distance in front of the winch offers many advantages:

- Pulling angle lifts the load and reduces friction;
- The winch is maintained at a relatively horizontal position;
- Winch and operator are away from the load's path.

3. Direction

Install the rope in such a way that it does not rub against other objects. Try to set-up the rope so that the front of the load is slightly lifted. Do not pull downwards or through an obstruction. Generally, if the rope touches the ground while pulling, your installation is incorrect.

4. On a hill

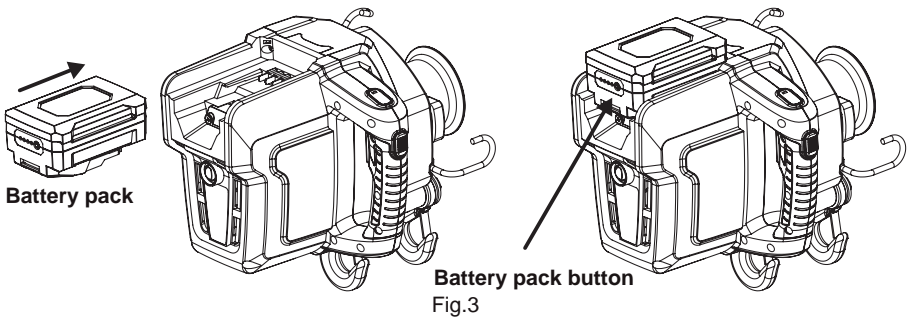
WARNING do Not Pull A Load Directly Toward The Winch In A Downward Slope Since It Could Slide Without You Being Able To Stop It. In That Situation, Use A Pulley At The Bottom Of The Hill And Position The Winch Outside Of The Load's Path.

5. Pulling a load

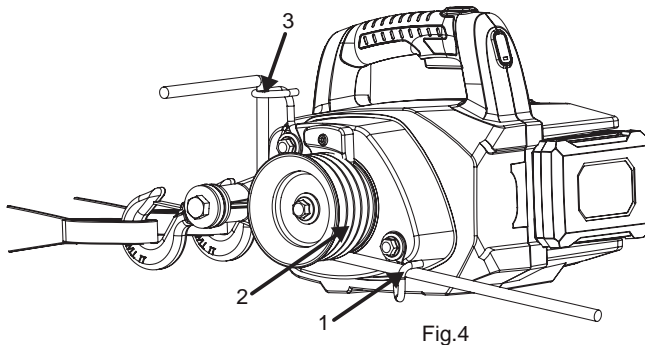
WARNING check winch position, rope condition, solidity of the anchor points, knots, carabiners or shackles in order to prevent injuries or material damage.

OPERATION

1. Completely insert the battery into the power head along the card slot until the battery button bounces up. To remove the battery, press the battery button, grab other sides of battery with other four fingers, and then pull the battery out. (Figure.3)



2. Put the rope into the rope entry hook and under the drum (Figure 4, No. 1)
3. Wrap the rope around the drum (3 or 4 turns) (Figure 4, No. 2)
4. Bring the rope in the rope exit hook (Figure 4, No. 3)



5. Stand about 3' from the winch and pull gently and horizontally on the rope to get the slack until you feel the tension rising on the rope;
6. Look at your set-up to make sure that the winch anchor and the rope entry hook are aligned with the rope; (Figure 5)
7. Check that the rope does not rub against objects along the path;
8. Turn on the power switch, the indicator lights up, press the start button to start the winch. (Figure 6)

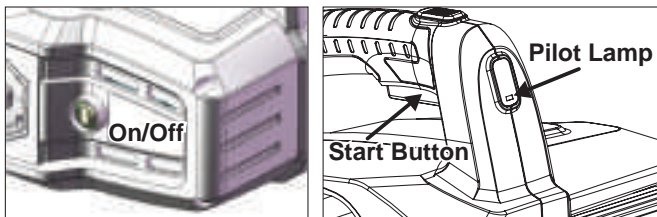
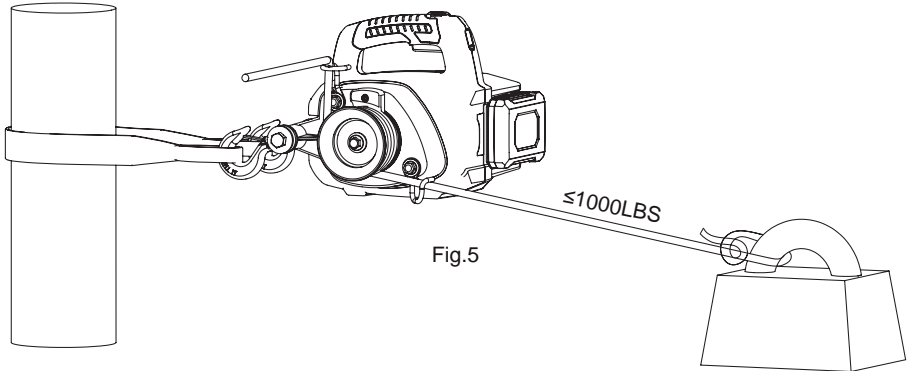


Fig.6

WARNING never put your hands on the capstan drum, the rope guide or the rope entry hook when the motor is running.

WINCHING

While winching, position yourself away from the winch in order to see both the winch and the load. Pull HORIZONTALLY on the rope. The tension you exert on the rope will keep the winch Cad Pull HORIZO level.

DANGER do not wrap the rope around your hands or your body! also beware of the rope accumulating in front of you; make sure your feet do not get tangled in it.

1. If the rope slips

If the rope on the drum while winching, add a fourth wrap of rope on the drum. When the winch reaches its maximum capacity, motor power-off protection. You then have to redo your set-up .

2. How to pause while winching

SLOWLY release the tension on the rope and let it slip on the capstan drum.

CAUTION do not let the rope slip for more than a few seconds on the drum while in tension – the heat created by the friction could melt or damage the rope.

3. Stopping the winch

1) Release tension gradually to lower the winch gently to the ground

2) Turn off the power switch

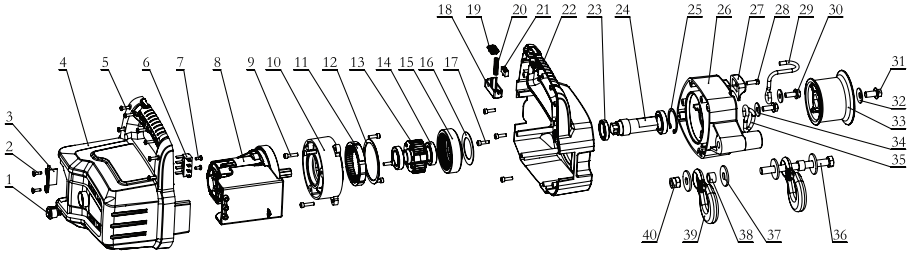
Once your job is done, you should clean and dry your winch.

CAUTION inspect the winch, hooks, rope, knots and polyester sling to detect any damage or signs of wear.

TROUBLE SHOOTING

Problem	Possible Cause	Solution
No operation for the pulling tool.	1. Power supply is not connected.	1. Check battery whether there is electricity. 2. Whether the power switch is on or not. 3. The downtime is more than 10 minutes and need to be restarted.
Stop working.	1. Power shortage for the battery pack. 2. The tractor exceeds the upper limit of the pull force.	1. Ensure the full electricity. 2. Reduce the weight of the tractor and restart it.
Slip between rope and drum.	1. Insufficient friction between rope and drum.	1. Check whether there is oil stain on the rope and drum, and clean the oil stain. 2. The rope is seriously worn and need to replace a new one. 3. Tension the rope so that the rope is in full contact with the drum

EXPLODED AND PARTS LIST



Part No.	Description	Q'ty	Part No.	Description	Q'ty
1	Power switch component	1	21	The micro switch	1
2	Screw st4.2x16f	2	22	Casing	1
3	Block	1	23	Bearing 61805	1
4	Casing	1	24	Transmission shaft	1
5	Screw ST4.2x16F	13	25	Block C 42	1
6	Plug assembly	1	26	Aluminum shell	1
7	Screw ST4.2x9.5F	2	27	Limit block	1
8	Motor assembly	1	28	Screw M6X18	1
9	Screw M5x20	3	29	Rope guid hook	1
10	Gear cover	1	30	Bolt M8x20	2
11	Internal gear	1	31	Bolt M10x20	1
12	Washer	1	32	Washer M10-A1	1
13	Gear assembly	1	33	Drum	1
14	Bearing 61905	3	34	Large washer A 8	2
15	Internal gear	1	35	Hook	1
16	Washer	1	36	Screw M12x130	1
17	Screw M5x16	7	37	Large washer A 12	4
18	Trigger	1	38	Spacer sleeve	2
19	Decorative cover	1	39	Safety hook	2
20	Pressure spring	1	40	Nut M12	1



Great Circle USA
Support Line: 1-866-493-0524
help@greatcircleus.com
www.greatcircleus.com