

# NexFoto User Manual

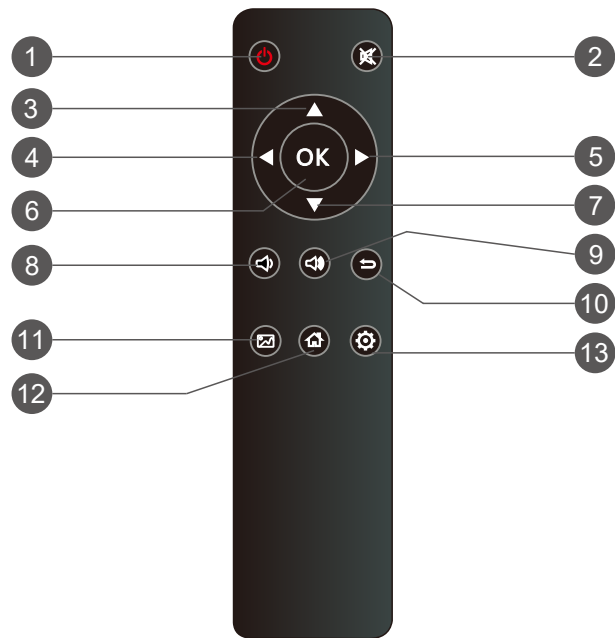


## NexFoto User Manual

Welcome to NexFoto! NexFoto digital frame is designed to collect & display thousands of your photos privately and safely. It's easy to get connected with all your loved ones around the world. This manual will provide details you need to set up your frame, invite families and friends to share photos with your new NexFoto frame. Let's get started!

### Table of Contents

Remote Control	1
Getting Started	3
Uploading to NEXFOTO frames	4
Key Features	14
Multiple Functions	17
General Settings	17
Technical Specification	20
Trouble Shooting	20
NexFoto customer care	21
ISED Statement	22



- 1 **POWER** —Switch On/Off
- 2 Mute—Press Mute button to silence the voice temporarily
- 3 —Up key
- 4 —Left key
- 5 —Right key
- 6 —Press to confirm. Play/pause: In the playing mode,press this button,it will pause; repress this button, it will play again.
- 7 —Down key
- 8 —Turn down the volume.
- 9 —Turn up the volume.
- 10 —Return to upper page.
- 11 -Go to the photo gallery interface
- 12 —Go to the home screen.
- 13 —Go directly to Setup mode.

**Note:**

Please make sure you have removed the plastic insulation sheet above the battery before use the remote control.

## GETTING STARTED

### 1. Plug in your frame

Plug the socket in the back and connect the photo frame to a power source. The frame will power on in seconds. You can place the frame either in landscape or portrait mode (we recommend you place it in landscape mode during the first setup).

### 2. Initial Settings

There are several initial settings (Language, Wi-Fi, Nickname, City, Timezone etc.) when you enter the system for the first time.

### 3. Connect to Wi-Fi

You can connect to Wi-Fi during the initial settings or under the Wi-Fi setting. Select the Wi-Fi network you would like to connect to and enter the correct password if required. If your Wi-Fi network is not on the list, restart the router or move your frame closer to your router, wait for seconds and check it again.

#### Note:

- ① The photo frame supports 2.4G/5GHz Wi-Fi networks.
- ② A private Wi-Fi network is highly recommended.

## UPLOADING TO NEXFOTO FRAMES

### Upload Photos and Videos Via VPHOTO App

#### 1. Download the VPhoto App

Please download and install the VPhoto app on your mobile device by searching VPhoto on the App Store or Google Play Or scan the below QR



#### 2. Create an Account

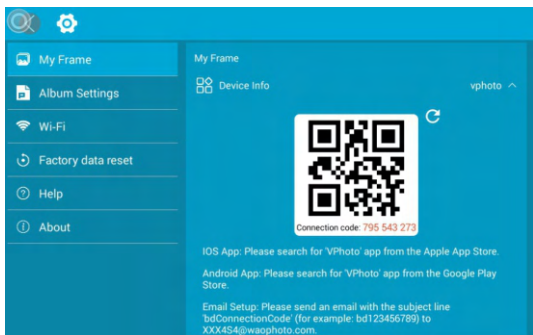
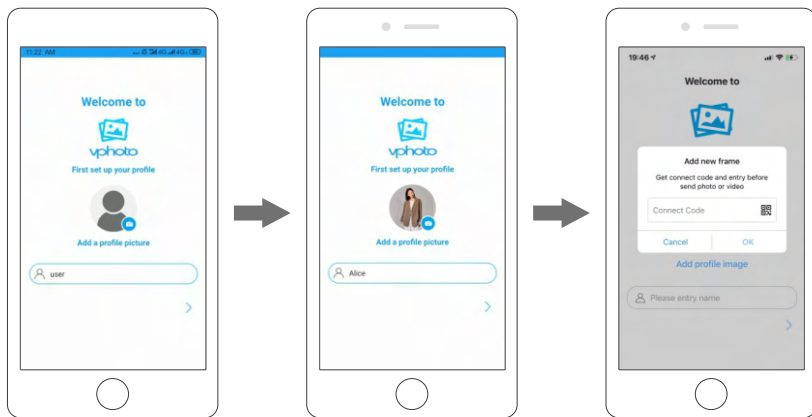
Open the VPhoto app, please set your user name and your profile photo.

#### 3. Pair Your Frame via the App

You will be required to enter the connection code or scan the QR code of your frame. It's in [Settings→ My Frame] on your frame. Once the process is completed, you will see a pop up message [Bind success].

#### Note:

- ① Connection Code is a 9-digit series number which can be found in your frame, device main interface→Settings→My frame.
- ② The Connection code and QR code will refresh every 12 hours.
- ③ Before you view the connection code and QR code, Please make sure your frame is connected to Wi-Fi, otherwise the connection code and QR code will not load out.



## UPLOADING TO NEXFOTO FRAMES

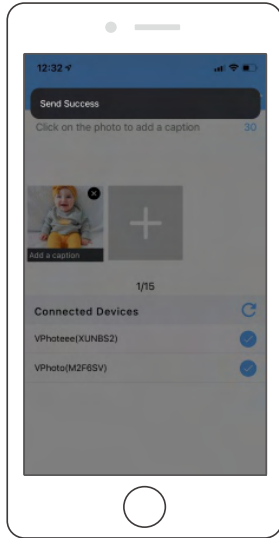
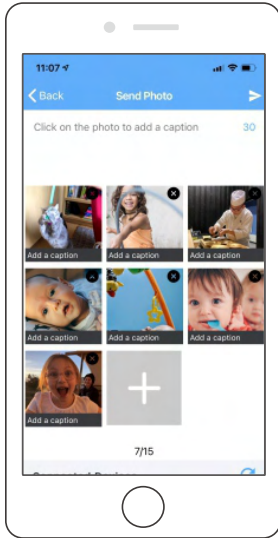
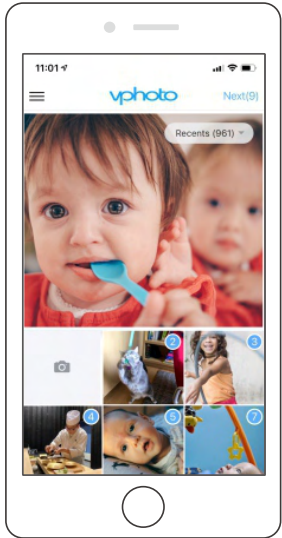
### 4. Upload Photos and Videos to Your Frame

After connecting the App to your frame, you can start adding photos and videos to your frame anywhere and anytime as below two ways:

- ① Select the photos or videos of your Albums of your phone to upload and choose the frame to send. Click the Next Step, you can write caption for each photo and choose the frame you want to send. Click the right arrow icon to confirm.  
How to add caption for photos: Click on the photo and add description when uploading. Please attention, the title cannot be modified after uploading to the photo frame.
- ② Click Camera icon to take new photos or videos and choose the frame you would like to send to. Click the right arrow icon to confirm. The photo frame will receive the photos or videos in seconds, you can check the photo or video library on the frame.

#### Note:

- ① If the frame didn't receive the photos or videos, please reboot the product or check the Wi-Fi network.
- ② Each video clip is limited to 200MB.
- ③ Videos can only be uploaded individually everytime.



## UPLOADING TO NEXFOTO FRAMES

### 5. Invite Your Families&Friends to Connect Your Frame

Your families and friends can share their happy moments to your frame by following steps:

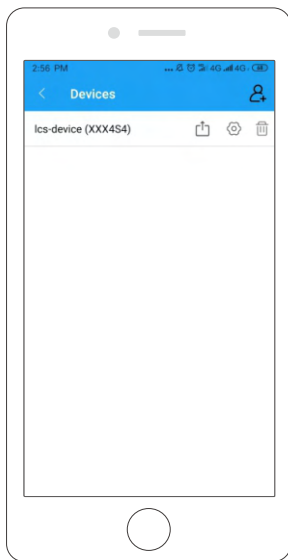
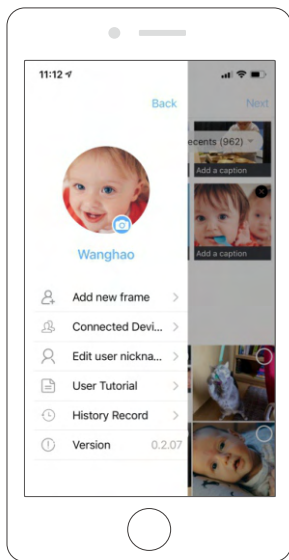
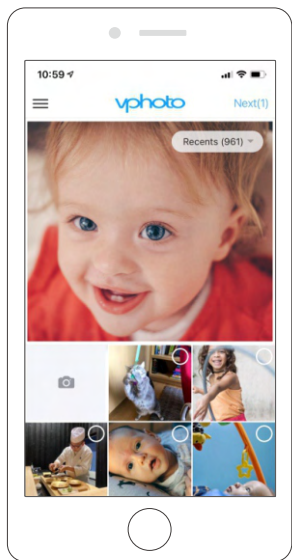
- ① Download and install the app.
- ② After opening App, please set user name and profile photo.
- ③ Get the connection code shared by you to connect to your frame, Please check your code is valid.
- ④ Start sending the photos and videos to your frame.

Here are two ways to share you connection code:

- 1) Take a picture of the connection code on the frame to send.
- 2) Open your VPhoto App, click More icon on the upper left corner and choose Connected Device, select the frame you want your friend to connect, click the Share icon. You will receive a picture of QR code and Connection code. Send this to your families and friends.

Note:

- ① Connection Code is a 9-digit series number which can be found in your frame, device main interface→Settings→My frame.
- ② The Connection code and QR code will refresh every 12 hours.
- ③ Before you view the connection code and QR code, Please make sure your frame is connected to Wi-Fi, otherwise the connection code and QR code will not load out.



## UPLOADING TO NEXFOTO FRAMES

### Upload Photos and Videos Via Email

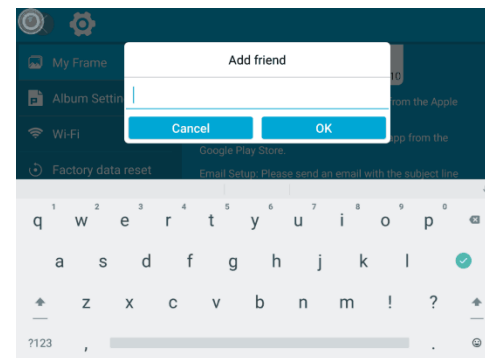
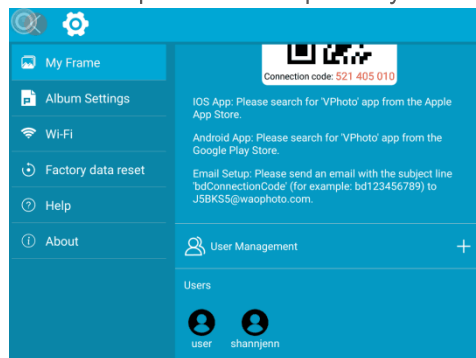
You and your friends can also send photos and videos to the frame via your Email.

1. Connect your Email address to the frame via two methods:

- ① By Pressing [+] in [User Management], then add mailboxes. You will receive an email to inform your binding request is completed and the way to send photos and videos to the frame.
- ② By emailing to the mailbox specified in [My Frame], with the subject: bd Connection Code (For Example bd123456789).

Note:

The Connection Code is valid for 12 hours. If it is a newly bound user, the latest connection code is required. It has no affect on already bound users. After the connection is successful, you can directly send photos/videos, and do not need to bind the photo frame repeatedly.



## UPLOADING TO NEXFOTO FRAMES

### 2. Upload Photos and Videos to Your Frame

After adding your email address to the frame, you can email photos and videos to the mailbox of the frame.

Your photos and videos will be received in minutes, you can check the photo or video library on the frame. Each video clip is limited to 200MB.

### Upload Photos and Videos Via USB Drive/SD Card

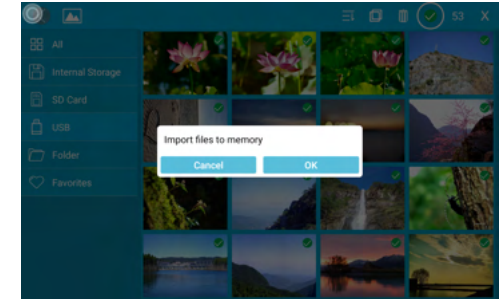
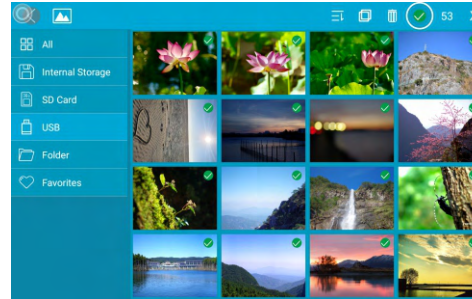
The frame can also support some external drive to add photos and videos to the frame.

1. Insert a USB drive/SD card into the frame, and wait for seconds, the frame will notify you when successfully connected.
2. Enter the Photo or Video library, click USB/SD card and you will see all the photos or videos stored in the USB drive/SD card.
3. Click the More icon at the upper right corner, select the photos or videos you would like to copy to the internal memory of the frame.
4. Click the Copy icon at the top then choose OK to import the photos or videos.
5. Your photos or videos will be reserved in internal storage in seconds, you can check the photo or video library on the frame.

Note:

- ① Max support a 64GB SD Card.
- ② Please remove all your external devices when you reset the photo frame.
- ③ If you have too many files stored in the card, it will take more time to read.
- ④ Not all models support external drive. Please take the actual product as the standard.
- ⑤ USB/SD Card only supports FAT32 format.

## UPLOADING TO NEXFOTO FRAMES



### Upload Photos and Videos Via Computer

If you would like to upload large files to the frame, you can use computer to connect to your frame via USB cable simply. You can transferring photos and videos from computer in large quantities.

1. Connect your computer and frame with the USB cable. Please keep the frame powered on.
2. Find your frame disk that named after the frame's model number in your computer.
3. Add media files that you would like to play on your frame to exact sub-folder in your frame disk. (pictures into 'Pictures' folder, videos into 'Movies' folder, etc)
4. In your frame, the photos, videos and music you upload from your computer will be stored in 'Internal Storage' in the library.

### Upload Music Via USB Drive/SD Card

The frame can also support some external drive to add music to the frame.

1. Insert a USB drive/SD Card card into the frame, and wait for seconds, the frame will notify you when successfully connected.
2. Enter the Music, click USB/SD card and you will see all the music stored in the USB drive/SD card.
3. Click the More icon at the upper right corner, select the music you would like to copy to the internal memory of the frame.
4. Click the Copy icon at the top then choose OK to import the music.
5. Your music will be reserved in internal storage in seconds, you can check the music library on the frame.

### Upload Music Via Computer

1. Connect your computer and frame with the USB cable. Please keep the frame powered on.
2. Find your frame disk that named after the frame's model number in your computer.
3. Add media files that you would like to play on your frame to exact sub-folder in your frame disk. (music into 'Music' folder)
4. In your frame, the music you upload from your computer will be stored in 'Internal Storage' in the library.

### Pictures Slideshow

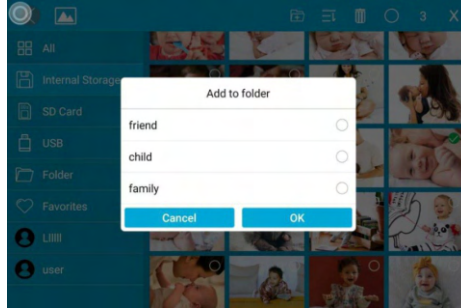
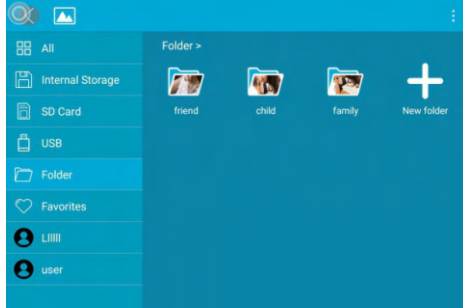
Enter [Picture] in upper-left part of homepage.

You will find [All], [Internal Storage], [SD Card], [USB], [Folder], [Favorites] and user list; you can check all pictures of each playlist and operate in batch.

- [All] is including pictures in internal storage and external device. The default playlist is [All], you also can choose [Internal Storage] by tapping one picture of it to start slideshow.
- [Internal Storage] is all of the pictures sending from app, email, copied from external device.
- [SD Card]/[USB], shows the pictures in external drive like USB Drive, SD card. To add pictures to [Internal Storage] from [SD Card]/[USB], you can click [⋮] in upper-right corner, choose the pictures you want to add to [Internal Storage] then click [📁] and [OK] to confirm the process.
- [Folder], you can create folders and name them. Only pictures in [Internal Storage] can be added.



## KEY FEATURES



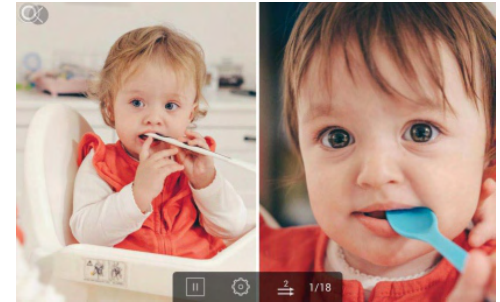
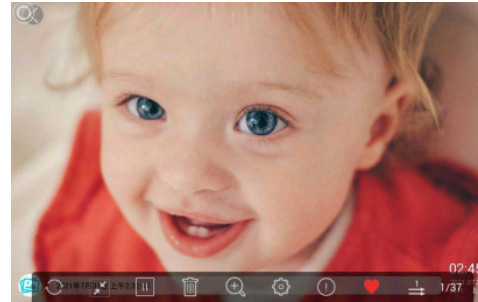
### Note:

- ① Only pictures in [Internal Storage] can be added into folders and to favorite.
- ② To delete some pictures, we highly recommend to operate in [Internal Storage] instead of [ALL]; Or please remove external device while deleting to avoid deleting files in your USB Drive/Card by mistake.
- ③ Not all models support external drive. Please take the actual product as the standard.

During the slideshow, you will have more tools to customize the slideshow just by touching the screen, there will be an operation column on the bottom.

The contents are as follows: Rotray, Full screen display, Pause, Delete, Zoom in, Setting, Information, Add to favorites, Slit screen display.

You can tap [♥] to add the picture to you [Favorites] and set multi-display for fun. You can adjust the slideshow transition effect and slideshow interval. You can also pause the slideshow to keep showing this photo.



### Videos Slideshow

Choose [Video] in homepage, select the video you want to play.

**Note: Video Clip shared from the app and email will show in the video library.**

## MULTIPLE FUNCTIONS

### Music

Choose [Music] in the homepage, select the music you want to play.

### Weather Forecast

Choose [Weather] in homepage, you can check the weather of three days. Both [°C] and [°F] are available, switch to the temperature format you want to use. By pressing [+] on upper-left part to add several cities, you can know the weather of the city you add.

### Clock

Choose [Clock], you can choose the clock skin you like to present the time.


Steps: After entering the clock interface, double-click the screen.

### Alarm

Choose [Alarm] to set up alarm clock. [Add] for adding new alarm clock and [Edit] for adjusting the set time and deleting the alarm clock you choose.

## GENERAL SETTINGS

### [My Frame] shows your frame connection code and managing users.

- The Connection code and QR code will refresh every 12 hours. You can also refresh the code manually by .
- To nickname your frame, press the name of the frame on the right corner to edit; it will show on the app when you connect the frame.
- For sending photos and videos to your frame via email, you can easily by press [+] at [User Management] to add the email address. Please refer to “UPLOADING PHOTOS VIA EMAIL” for details.
- At [Users], it allows you to manage the connected account of the frame. Pressing the account name, you can Views Photos/Remark Name/Delete User/Delete User&Photos.

## [Album Settings]

### • Motion sensor

Turn on this button, the frame will turn off when the room is empty for energy saving

### • Brightness

Adjust the brightness of the screen.

### • Sound

Adjust the media volume.

### • Touch sounds

Choose the sound on or off when touch the screen.

### • Assistive Touch

Turn on this button, the assistive touch will appear on the screen. It is a quick navigation key to help you easily go to the Home page and adjust the volume.

### • Language

English, Deutsch, Español, Français, Italiano, русский, 日本語, 简体中文 Choose the system language.

### • Slideshow

Set Slideshow time to make the frame automatically displays photos after a period time of inactivity. For example: Set it to 15 seconds, which means if there is no operation within 15 seconds, the screen will automatically switch to the slideshow

### • Slideshow Mode

Choose either Sequential or Random mode to display photos.

### • Sort by

Choose the pictures to be sorted by time or name.

### • Caption

Turn on this button, the caption you write will be presented with the photo.

- **Date and Time**

Set the date and time according to your preference. You can select time zone and use network-provided time.

- **Sleep**

Set the Auto-On/Off time, as Sleep Schedule, to make the display automatically turn on and off at a specific time.

- **Auto-rotate screen**

With auto-rotate screen button on, you can place it in portrait and landscape, the frame will adjust the picture automatically.

- **Notification sound**

Choose to be notified new message with sound or not.

### **[Wi-Fi]**

Select the Wi-Fi you want you frame to connect with.

### **[Factory data reset]**

1. Click Factory data reset
2. Here are two kinds of reset:
  - 1) choose 'Delete all users and restore the device to inactive'; device files will be reset and all bound users will be unbound.
  - 2) not choosing the option, only device files will be back to default setting. Bound users remains.
3. Click OK to reset your frame.

### **[Help]**

Simple guide for you to share your pictures.

### **[About]**

It's the product information about your frame like Version, Frame ID, Serial Number etc. When you contact us, sometimes our customer service may ask for frame information to better know the question. You may find it here.

### **TECHNICAL SPECIFICATION**

---

- Adapter: Input 100-240V 50/60HZ
- Picture Format: BMP, JPG, GIF, PNG
- Audio Format: Mp3, WMA, OGG, AAC, APE, FLAC, WAV
- Video Format: MPEG1, MPEG2, MPEG4, Xvid, AVI, M-JPEG, H.264, MOV, VOB , MKV, DIVX4, DIVX5, DIVX33GP
- External support: Max 64GB USB Drive/Card
- Only Support 2.4G/5GHz WiFi network
- Model Number: NF-W11B-BA, NF-W10D-BA-H, NF-W17D-BA

### **TROUBLE SHOOTING**

---

#### **1. Does the frame have to be plugged in all the time?**

This frame needs to connect an DC outlet all the time.

## 2. Why this frame cannot connect to Wi-Fi?

It supports 2.4G/5GHz Wi-Fi networks, select the Wi-Fi network you would like to connect to and enter the password correctly if required. If your Wi-Fi network is not on the list, restart your router or move your frame closer to your router, wait for seconds and check it again.

## 3. Does this frame have to be Wi-Fi connected to work or just in the setup process?

This frame needs to connect to a Wi-Fi network for setup, receiving new photos/videos, receiving user requests and software updates. Other than that, the frame can play photos or video without a Wi-Fi connection.

## 4. Why the frame does not have sound?

Please check whether the volume is correct and the player is not in Mute mode.

## 5. Can I share photos and videos to the frame?

Yes, you can share both photos and videos (up to 200MB) to the frame.

## 6. Can I cycle pictures and videos together?

You could only play photos or videos separately.

## 7. Can this frame automatically turn on/off at a specific time?

You can go to the Sleep setting and set the auto on/off time as you want.

## 8. Why there is no files after sharing video or picture to cloud server?

Please check whether the upload process is completed or not.

## 9. Why this frame cannot play the file?

Please confirm if the file format is compatible with the frame.

## 10. Can I change the image transitions and displaying speed?

Yes, the speed can be adjusted in bottom column while pictures are displaying.

For any inquiries with NexFoto products, please feel free to contact us, we will respond within 24 hours.

## After-sales service



Customer Service

Scan QR code to get in touch and get extra 6-month warranty!

Or Visit: <http://www.nexfoto.com>

E-mail: [service@nexfoto.com](mailto:service@nexfoto.com)

**ISED Statement**

English: This device contains licence-exempt transmitter(s)/receiver(s) that comply with Innovation, Science and Economic Development Canada's licence-exempt RSS(s). Operation is subject to the following two conditions:

- (1) This device may not cause interference.
- (2) This device must accept any interference, including interference that may cause undesired operation of the device.

The digital apparatus complies with Canadian CAN ICES-3 (B)/NMB-3(B).

French: Cet appareil contient des émetteurs/récepteurs exempts de licence qui sont conformes aux RSS exemptés de licence d'Innovation, Sciences et Développement économique Canada.

L'exploitation est soumise aux deux conditions suivantes :

- (1) Cet appareil ne doit pas provoquer d'interférences.
- (2) Cet appareil doit accepter toute interférence, y compris les interférences susceptibles de provoquer un fonctionnement indésirable de l'appareil.

l'appareil numérique du ciem conforme canadien peut - 3 (b) / nmb - 3 (b).

This device meets the exemption from the routine evaluation limits in section 2.5 of

RSS 102 and compliance with RSS 102 RF exposure, users can obtain Canadian Information

**ISED Statement**

on RF exposure and compliance.

cet appareil est conforme à l'exemption des limites d'évaluation courante dans la section 2.5 du cnr - 102 et conformité avec rss 102 de l'exposition aux rf, les utilisateurs peuvent obtenir des données canadiennes sur l'exposition aux champs rf et la conformité.

This equipment complies with Canada radiation exposure limits set forth for an uncontrolled environment.

Cet équipement est conforme aux limites d'exposition aux rayonnements du Canada établies pour un environnement non contrôlé.

This equipment should be installed and operated with minimum distance 20cm between the radiator & your body.

Cet équipement doit être installé et utilisé à une distance minimale de 20 cm entre le radiateur et votre corps.