

# Quality Report Pre-Order 2023

# Quality Certificate

STOCKHOLM, MAY 31<sup>ST</sup> 2023

To ensure high colour accuracy and reliable colour samples, NCS Colour AB performs rigorously quality controls in production.

Quality controls are executed by NCS Colour AB in Stockholm, Sweden. The colour is checked three times during production; mix, coat and final product, to ensure premium colour appearance. NCS colour samples are produced with EU-approved pigments to match the primary NCS masters with global-leading colour accuracy and consistency.

The NCS System is described in the Swedish standard SS 19100 and in the international standard ASTM 2970. NCS quality report refers to quality levels set out in Swedish standard SS 19104.

We are proud to declare that the pre-order production 2023 is hereby approved according to quality level QL 1.

Controlled and certified,

NCS Colour



*NCS – the Natural Colour System®© is a registered trademark and may only be used commercially after a license agreement has been signed with NCS Colour AB.*

NCS COLOUR AB  
Igeldammsgatan 30  
P.O. Box 49022  
SE-100 28 Stockholm

+46 (0)8 617 47 00  
info@ncscolor.com  
ncscolor.com



# NCS QUALITY LEVELS

NCS quality levels define the greatest allowable colour difference between the match and primary NCS master through NCS tolerance classes. The tolerance classes are specified for the D65, A and F11 illuminates. The table below also includes tolerance limits for specular gloss values in 60° measurement angle.

## NCS QUALITY LEVEL QL 1

- 80% within NCS tolerance class A
- 100% within NCS tolerance class B

NCS tolerance class	Maximum $\Delta E$			Specular Gloss 60°
	D65	A	F11	
A	0.5	0.6	0.6	15-20
B	1.0	1.1	1.2	12-21

## MEASUREMENT CONDITIONS

Measurement values are evaluated according to CIE 15:2018. Measurement geometry di:8° (diffuse illumination, specular component included), UV component included, readings every 10 nm from 360 to 750 nm. All  $\Delta E$  values are calculated according to CIEDE2000 in accordance with CIE 15:2018. NCS S 0500-N (white) is used as a sample backing in reflectance measurement. Standard light sources used are D65, A and F11 (CIE 15:2018). Gloss measurements in accordance with ISO 2813, 60°.

## CONTROLLED AND CERTIFIED

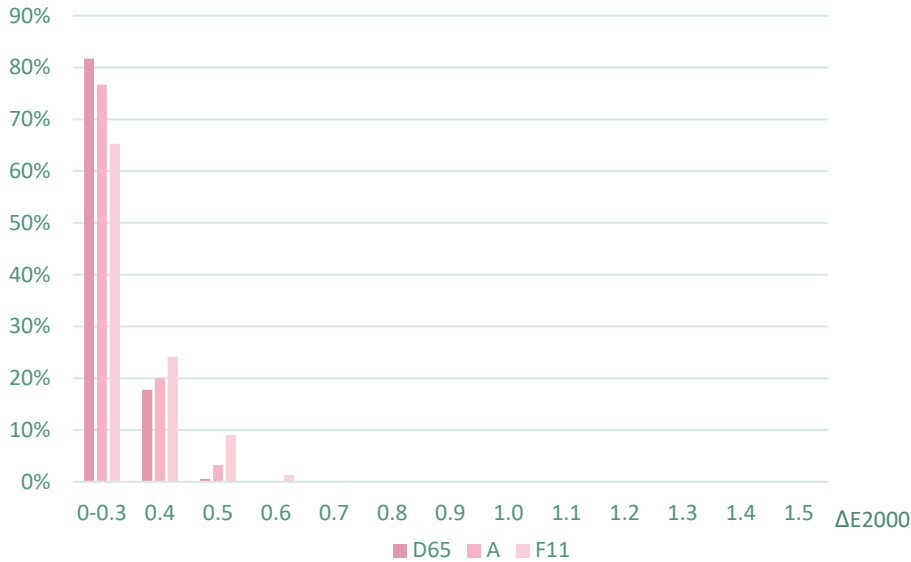
NCS Quality symbol confirms that the product is controlled by NCS Colour and comply with NCS Quality levels. Look for NCS quality stamp in your products.



# PRODUCTION RESULTS

The tables and graphs below show the deviation of each colour in respective product to NCS primary standards at quality control of pre-order 2023.

## NCS INDEX



## NCS INDEX

NCS tolerance class	D65, ΔE	A, ΔE	F11, ΔE	Gloss, 60°
A	100%	100%	99.8%	99.7%
B	100%	100%	100%	100%

## NCS A4\*

NCS tolerance class	D65, ΔE	A, ΔE	F11, ΔE	Gloss, 60°
A	100%	100%	99.9%	100%
B	100%	100%	100%	100%

\* 686 colours produced as A4 sheets in pre-order 2023.

## NCS CASCADE

NCS tolerance class	D65, ΔE	A, ΔE	F11, ΔE	Gloss, 60°
A	100.0%	100.0%	99.8%	98.7%
B	100.0%	100.0%	100.0%	100.0%