

**Australian
made
World
renowned**

From humble beginnings as a small operation in 1985, Latronics® has grown to be a manufacturer and supplier of world-class domestic and industrial inverters to more than 30 countries right around the globe. Today the company continues to build its name and reputation with a growing range of leading edge products that proudly bare the Latronics® trademark.

Solar pioneers

Latronics® was one of the early pioneering companies in Australia to design and manufacture power inverters to convert DC battery power to AC mains power.

Our proud history began with servicing the needs of remote 'off grid' areas. Today, as Australia's largest inverter manufacturer, Latronics has extended its experience and expertise to develop the highest quality range of domestic 'on grid' applications and 'off grid' camping and caravan, marine and industrial applications.

Our greatest technological advancement is our people

You won't find any robots in our factory; just a group of highly trained, highly dedicated Australian's who pride themselves on 'hand making' the best inverters in the world. And each and every one of our staff is committed to enhancing and maintaining the Latronics® reputation. Why? Because it's their reputation too.

We're 100% solar powered

Having helped to generate billions of KW hours over the decades, it makes perfect sense that our factory is 100% powered by the sun. But our commitment to the environment goes far beyond our clean, green energy. As an environmentally responsible company, we embrace every opportunity to ensure that every aspect of our production contributes toward a sustainable future.

The world's first carbon neutral inverter manufacturer

With a total solar input of 26kW on our factory roof, our completely self-funded system is now one of the largest solar installations in Queensland. Today, we proudly export more power to the grid than we can use, contributing even more to a cleaner, greener environment.

APPROVED DISTRIBUTOR:

PV EGDE GRID CONNECT SPECIFICATIONS

Model number	PVE1200	PVE2500
Input data		
Max solar input	1600W	3100W
Max DC input voltage	100V	200V
Output data		
Output power	1250W max	2500W max
Peak efficiency	94%	95%
General data		
Status indicators	Digital LCD watt-hour-meter, Output power level, LED's, Grid - Stability check, Solar input ON, Grid Fault, Overload	
Connections	AC and DC pluggable connectors	
Wall mount enclosure	Powder coated aluminium	
Dimensions	330mm x 296mm x 150mm	370mm x 286mm x 180mm
Weight	11kg	22kg
Warranty	5 years	
Options		
Protection	Weather proof enclosure	
Standards		
	AS4777, AS3100, C-Tick, CE	

STBVE01

LATRONICS®
A NEW WORLD POWER

**A 'low voltage
advantage'™
that eclipses
the rest**

**AUSTRALIAN
MADE**

World-class green engineering from the heart of Australia

Tested in the biggest lab in the world

As the sunburnt country, Australia offers up the harshest, most trying conditions in the world. From searing temperatures and dust storms to hail and snow, the Latronics® inverter's robust design has been proven over decades to take everything the Australian environment can throw at it. Built in Australia for Australian conditions so they are built to last.

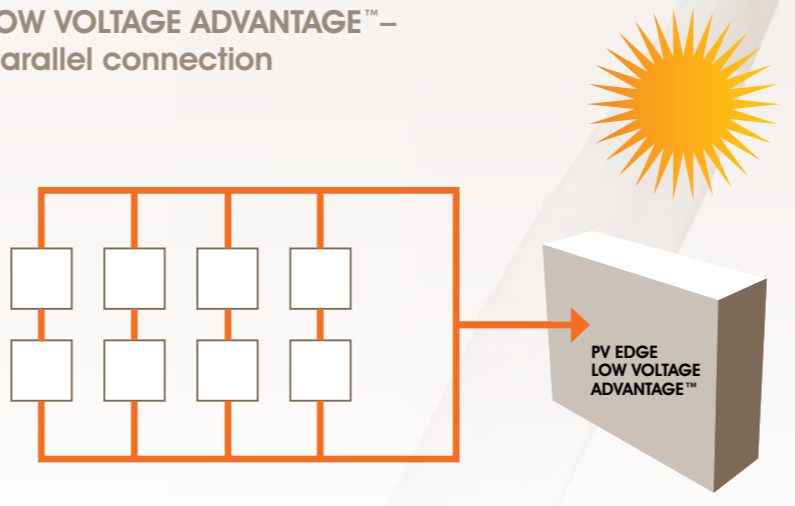
We've thrown away the 'throw-away' concept

Almost every part of a Latronics® inverter is recyclable, from the case down to individual components. Instead of just being thrown away these units are designed to be able to be repaired and recommissioned to last even longer (should anything ever actually fault). On top of this, the manufacturing process for all of our products generates very little waste.

The first with many firsts

The international success of the Latronics® inverter range has enabled us to undertake a range of research and development projects into new and improved products associated with alternative energy. Today the Latronics® PV Edge inverter offers a world-first 'low voltage advantage'.

LOW VOLTAGE ADVANTAGE™ – parallel connection



Our PV Edge 'low voltage advantage'™

Latronics® PV Edge solar inverters use a unique panel setup known as a parallel string configuration. This design operates at a lower, safer voltage from the PV array, while having the advantages of reliability, flexibility and improved energy yield.

By using short multiple strings of panels, there are more paths for electricity to flow which ensures minimal power loss due to varying environmental or panel conditions. The special design of the Latronics® PV Edge inverters enables them to benefit from all of the advantages of this system design.

Key system benefits

Safety

Using lower voltages on the PV side, means there are lower voltages your roof eliminating high voltage hazards and giving peace of mind to installers and service personnel.



Improved energy yield

Parallel string configurations are less susceptible to panel tolerances (mismatch) within the panel strings, this ensures maximum panel output.



Flexible panel orientation

Where panels are required to be installed at different angles on a roof, such as a pitched roof, parallel panel configurations can be adapted to maximize performance.



Maximum performance with shading

In unexpected instances of the panel array becoming partly shaded, the parallel string configuration will not be completely compromised, ensuring maximum energy yield under these conditions.



PV Edge grid connect inverter

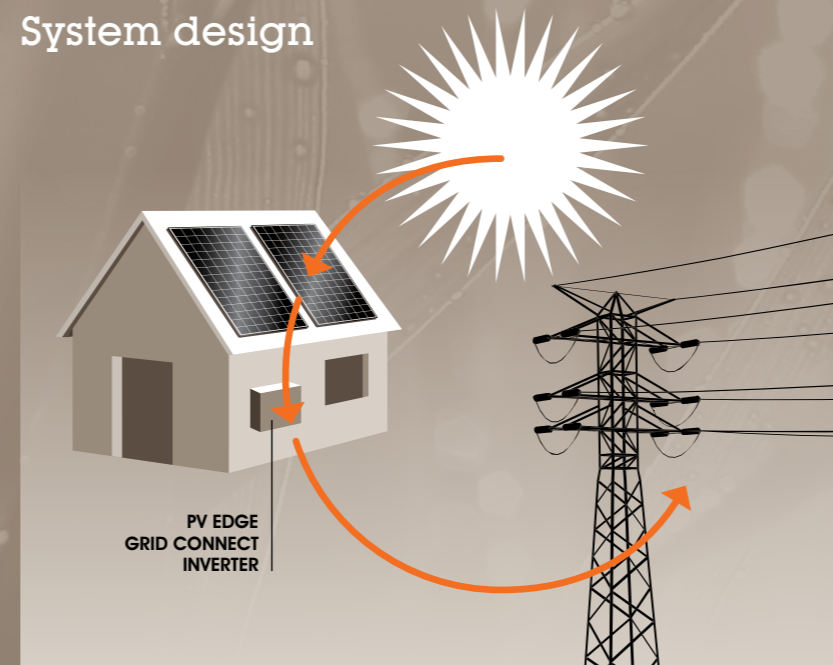
The PV Edge enables you to feed the electricity back into the grid. This effectively spins your meter backwards, reduces demand on power utilities and your home becomes a green power station. The inverter is the heart of every solar energy system. Choosing the right inverter will ensure you the optimum output from your investment.



PV EDGE GRID CONNECT

AUSTRALIAN MADE

System design



LATRONICS OUTDOOR ENCLOSURE

Outdoor enclosure – the sensible option

The Latronics® Outdoor Enclosure is designed to allow our 'PV Edge' Inverters to be installed outdoors quickly and easily. Like the the 'PV Edge' inverter these enclosures are Australian made and provide ideal protection and security for your investment.

