

The Dingo D4040P



A new Positive Ground 40A/40A smart solar controller.

The Dingo D4040P is our new series switching regulator in the Dingo family. Derived from the popular PL series controllers, the D4040P is the fruit of our extensive industry experience and recent technical developments.



Takes the heat

Full charge and full load current in 50°C heat.

All day, every day.

Local Service

Fast, reliable, affordable, Plasmatronics service.

Long after the warranty ends.

Hidden Wiring

All the wires are covered.

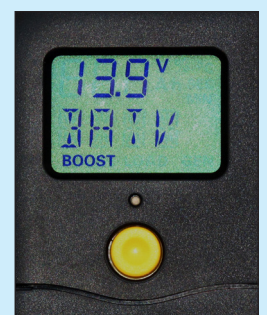
- Reliable, easy to understand, one button interface and proven, easy to learn menu structure.
- Symmetrical charge and load currents, both 40A.
- Industry standard four stage charging regime.
- 12,24,32,36 and 48V selectable. Only one controller to stock.

- **Positive Ground.** Suits many radio communications systems that require the positive side to be grounded.
- **Six terminals.** A terminal for every wire. Wiring is simpler and quicker.
- **Extended Data** 512 days storage

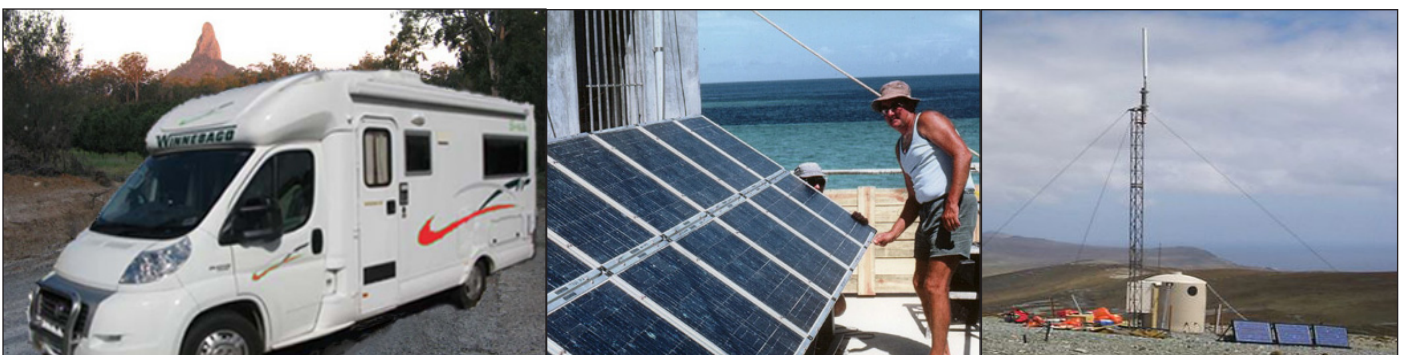
• New Communications Bus.

Rugged new bus uses the MODBUS protocol (industry standard)

- **Enhanced one button interface** Now with *Reverse gear* for adjustment downwards and *Fast Forward* to speed up during multiple pushes.
- **LED display backlighting** Switches off when not in use.
- **Extended range of accessories** See over for details.



Enhanced Display



Dingo D4040P Controller 12-48V 40A Charge 40A Load

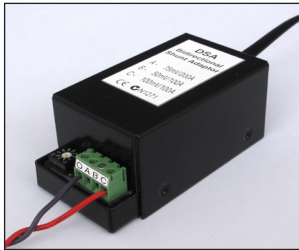


The Dingo series of solar controllers is exceptionally versatile. They give the user unparalleled capability to adjust the function of the controller and to monitor the performance of the energy system. For detailed information, download the D4040P reference manual from our website. (www.plasmatronics.com.au)

Size: 175Wx188Hx57D mm
 Weight: 1.01kg (in box)
 RRP: \$429

Accessories

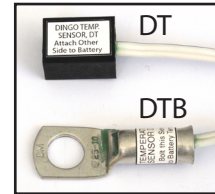
Measuring other currents - the DSA External Shunt Adaptor



The DSA reads external charge or load currents. Range 0-250A (0.1A steps, bidirectional). It's isolated - wire in anywhere. Max. 4 per system. Supports 75mV/200A, 50mV/100A & 100mV/100A shunts. (DCAB cable included)

RRP \$161.70 180g Box 146x129x57mm

SH200 Shunt 75mV/200A
 RRP \$55 238g 160x45x32mm



Battery Temperature Sensors.

DT 52g RRP \$29
 DTB 60g RRP \$29
 (with 3m cable)

DCAB 3m bus cables RRP \$17.60
Double Adaptor RRP \$6

Communications - the DUSB, D232 & DNET



The DUSB provides a USB interface to a computer. This allows the user to download data from the controller and change settings if required.

The D232 provides an RS232 interface (DTE) designed for remote computer access via a modem.

The DNET provides an ethernet interface to a network. Can be accessed via any Internet browser or SNMP.

(All are electrically isolated. The DNET requires a battery connection)

DUSB RRP \$93 Box 146x129x57 mm 240g (includes DCAB cable & PRISM monitor software)
D232 RRP \$93 Box 146x129x57 mm 192g (includes DCAB cable & PRISM monitor software)
DNET RRP \$130 65W x 81H x 30D mm 226g (includes DCAB cable)

Remote Control - the DRC

The DRC provides remote access to all the features available on the Dingo front panel. Works over 100m. No power connection required. Includes a display backlight and an audible alarm (which can be disabled).

DRC RRP \$165 76W x 116H x 27D mm 110g



***Accessory in development: 80A Switchblock**

Available from your distributor or direct from Plasmatronics Pty Ltd.
 ph 03 9486 9902 , fax 03 9480 3022 or go to: www.plasmatronics.com.au