

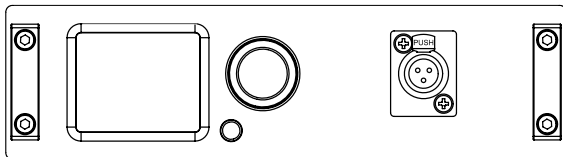
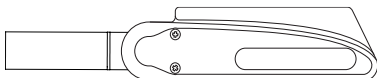
stageClix

INSTRUMENT MICROPHONE SET

User manual

Version 1.0

English



CE Ⓢ

A word of thanks

Thank you for choosing StageClix. This unit has been designed with the professional musician in mind.

All units are made with only the best-quality components and are produced using RoHS-compliant materials. This means they do not contain any harmful substances, like lead or mercury. In StageClix, we have developed a highly effective system that can be used for your favorite instruments or headsets/mics.

If you have any questions, please e-mail them to us at:
support@stageclix.com

If you like your StageClix product, please like us on Facebook and on Instagram.

Safety

Do not open; no user-serviceable parts inside

Warranty void when opened.

Do not use phantom power.

The unit is not waterproof; keep away from water and other liquids.

The maximum operating temperature of this unit is 55°C.

Keep away from electric heaters and flames.

Clean using a damp cloth.

Do not use cleaning agents or solvents.

Contents

1. What's in the package?	1
2. Using StageClix for the first time	1
3. Controlling the receiver	2
4. Controlling the transmitter	4
5. Signal quality	4
6. Technical details	5
7. Warranty	6
8. Compliances	7

1. What's in the package?

Transmitter



Receiver



Patch
Cable



5.8 GHz
Antenna

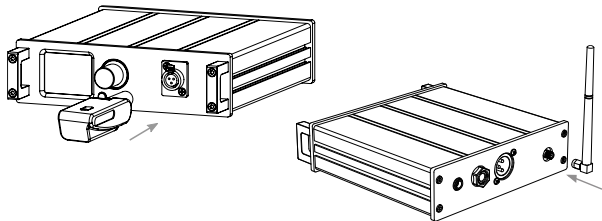


Power
adapter



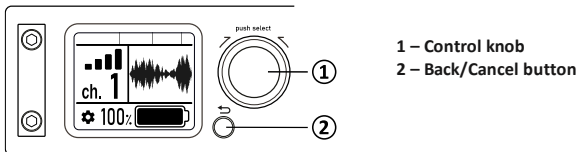
2. Using StageClix for the first time

1. Attach the antenna to the back of the receiver by turning the nut clockwise. Do not use tools and do not over-tighten.
2. Plug the supplied power adapter into a 110-230V supply, and the DC plug into the rear-panel DC socket. Only use the StageClix power supply.
3. Use the supplied patch cable to connect the rear-panel output jack to your amplifier input or to the input of your effect's unit.
4. Plug the transmitter into the front socket marked 'charge port' and leave the transmitter to charge for some time, preferably more than one hour.



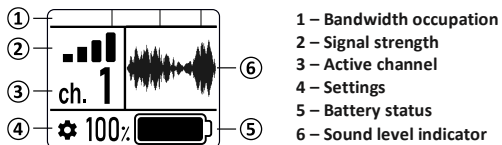
3. Controlling the receiver

3.1 Receiver controls



3.2 Display items

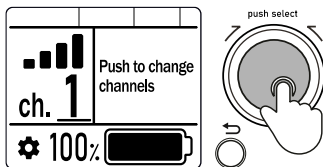
On the display, you can see all the important information.



3.3 Settings

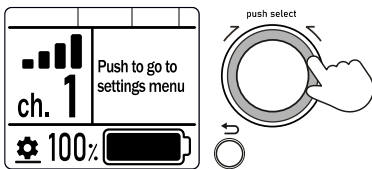
You can change settings on the receiver by using the control knob: rotate to change and push to confirm your action. You can go back or cancel at any time by pressing the back/cancel button.

To enter device settings, you need to push the control knob once.



This will highlight the channel number and a short help text will be displayed.

Rotate the control knob to choose between the settings icon and the channel number.



After you select the required option, push the control knob to enter the Channel change mode (3.3.1) or Settings menu (3.3.2).






3.3.1 Channels

If you are using multiple StageClix sets simultaneously within the same venue, it is important to assign a unique channel to each unit in order to prevent interference and ensure smooth operation.

To accomplish this, enter the Channel change mode and rotate the control knob to select a channel number for each unit. Once a channel number is selected, save it by pushing the control knob.

3.3.2 Settings Menu

In the settings menu, you can change the following:

	Brightness – adjust the brightness of the default display.
	Invert display – choose between a white and a black background.
	Active RFI – active RFI reduces interference with guitar electronics or piezo pickups.
	Position – choose between horizontal and vertical display layout.
	Info – information about the receiver and transmitter (if plugged in) Software versions.

4. Controlling the transmitter

To turn the transmitter on or off, simply press the button gently for 1 second.

To charge the transmitter and set channel, plug it into the receiver.

When the transmitter is plugged into the receiver, the LED provides the following indications:

- **Pairing:** The LED blinks rapidly for several seconds.
- **Battery is charging:** The LED blinks slowly until the battery is fully charged. *Charging time for an empty battery is approximately 3 hours.*
- **Battery fully charged:** The LED dims in a heartbeat-like pattern.

Note that upon unplugging the transmitter from the receiver, it will automatically power off.

5. Signal quality

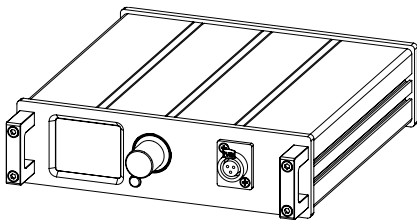
This system uses a patented digital transmission technique and unique triple-frequency diversity for a reliable noise-free link.

However, there are some points to maximize the range:

- If possible, install the receiver in an elevated position.
- Keep proper distance from broadband interference sources like Wi-Fi access points, Wi-Fi-enabled laptops, and switching power supplies.
- Keep the antenna away from other cables and ensure it is pointing upwards.
- Stone walls and reinforced ferroconcrete walls can partially block the signal.

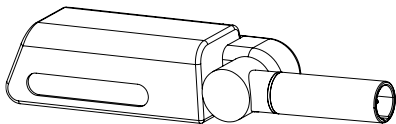
6. Technical details

Receiver



- Operating frequency: 5.8 GHz band (5.725 GHz - 5.850 GHz)
- Receiver sensitivity: -90 dBm
- Output impedance <math>< 1\text{ k}\Omega</math>
- Bitstream audio DAC
- 12 different selectable channels
- Fast charging
- Full aluminium enclosure
- Rackmount-ready
- Power supply: 9V 1A

Transmitter



- Operating frequency: 5.8 GHz band (5.725 GHz - 5.850 GHz)
- RF output power: 25 mW EIRP (14dBm)
- Input impedance: 4.7 M Ω // 39 pF
- Bitstream audio ADC: 103 dB SNR, 24 bit
- Frequency response: 10 Hz-21 kHz \pm 3 dB @1 V_{pp}
- Mini XLR plug type with integrated +5V bias
- Li-Po battery life: up to 8 hours
- ESD-protected
- No compander
- Sturdy Polycarbonat housing

7. Warranty

The StageClix product you have purchased is covered by a warranty for a term of 24 months, commencing on the date of purchase. Please retain your sales receipt as proof of purchase.

We shall satisfy our warranty obligations by remedying any material or manufacturing faults free of charge at our discretion, either by repair or by exchanging individual parts or the entire appliance.

This warranty does not cover the following:

- Minor faults or deviations in the quality of the product which do not affect the product's value or suitability for its intended purpose.
- Faults resulting from improper use, e.g., operating errors, mechanical damage, incorrect operating voltage. Proper use for the purpose of this warranty is defined as the use of the product in compliance with the conditions stated in these instructions for use.
- Any damages resulting from contact with water. Please note that the product is not waterproof.
- Faults arising from normal wear and tear.

The purchaser bears the cost and risk of returning shipping to the point of sale.

Warranty claims can be made in any country whose statutory rights are not in conflict with our warranty regulations. No other warranty claims or claims over and above those stated in these terms and conditions will be accepted.

8. Compliances

CE declaration of conformity

This unit has been tested in accordance with the R&TTE Directive:

- ETSI EN 300440-2 (Radio)
- EN 301 489-3 V2.3.2 (EMC)
- EN 62368 (Safety)

Manufacturer declarations

This unit is compliant with the Restriction of Hazardous Substances (RoHS) Directive.

Handle and dispose of the transmitter and receiver with care.

- To replace the batteries, contact StageClix or an authorized StageClix dealer.
- Incompatible batteries or charging using any device other than the StageClix receiver can cause serious injuries or damage to your StageClix product.
- Never throw the transmitter or receiver on a fire.
- Follow all local regulations when disposing of this product.
- Never place the transmitter or receiver on or in a heating device, such as a microwave oven, stove, or radiator. The transmitter contains batteries that may explode when overheated.
- Never crush or puncture the transmitter or receiver. Avoid exposing the transmitter and receiver to high external pressure, which can lead to an internal short circuit and overheating.
- Protect the product from damage.
- Avoid exposing the transmitter and receiver to very low or very high temperatures (below 0°C/32°F or above 45°C/113°F). Extreme temperatures can reduce the battery life of the transmitter.
- Never use a damaged transmitter or receiver.

Ensure maximum battery and charger life:

- **Avoid charging the transmitter for more than a week, as continuous charging may shorten battery life.**
- **Over time, unused batteries will discharge. Do not allow the batteries to fully discharge over time, since this can cause them damage.**
- **Charge the transmitter before use.**
- **Disconnect the receiver from power sources when not in use.**
- **Use the transmitter only for its intended purpose.**

Correct disposal of this product

(Waste Electrical & Electronic Equipment)

(Applicable in the European Union and other European countries with separate collection systems)



If the product, accessories, or literature bears this mark, it means that the product should not be disposed of with other household waste at the end of its working life. To prevent possible harm to the environment or human health from uncontrolled waste disposal, please separate these items from other types of waste and recycle them responsibly to promote the sustainable reuse of material resources. Household users should contact either the retailer from whom they purchased this product, or their local government office, for details on where and how they can take these items for environmentally safe recycling.

Commercial users should contact their suppliers and check the terms and conditions of the purchase contract. This product and its electronic accessories should not be mixed with other commercial waste for disposal.

www.stageclix.com
The Netherlands

**StageClix is a trademark of Qdes Works BV.
Qdes Works BV shall in no event be liable for damages arising from
use of this product.**