



Debut lighting collection
from British artist
Sassy Hardwick

Introducing the first in a series of collections of luxury, hand-crafted lighting from designer/artist Sarah Payne.

Artistic, individual and elegant, the high-end lighting is aimed at the interiors market for the mid tier buyer with a discerning eye for art and interiors.

The collection is available in 3 finishes, plaster, bronze & pewter with custom options such as hand painted in muted or vivid colours. Alternative colours are being introduced along with a few pieces of home decor like her kitchen towel and match box covers.

Payne, known as Sassy Hardwick through social media channels, demonstrates her knowledge of interiors which comes through in her consideration of design aesthetics. She uses sculptural figures, unique shapes & tactile burnished finishes which are the focal point of her collection. She designs and makes the master lights herself from her base in Surrey and uses small local businesses for reproductions which she hand finishes herself.

The lights in her collection are affectionately named after the people & places that hold deep personal significance and bear influence on her artistic choices.

"My vision is to blend sculptural objects with functionality. I have a deep passion for designing and making, mixed with my love of interiors so it was inevitable that I would explore this route. I'm not designing lighting purely for sake of it, I'm creating pieces of art to be timeless and appreciated as not just a light, but objet d'art. I adore the work I do and hope that's visible through the collection."

The launch of Collection No.1 marks the beginning of her venture into decorative lighting and her intention to grow her lighting brand along side her fine art with Collection No.2 set for release in November 2023 which will also include chandeliers and select limited editions pieces.

She is currently working on another lighting collection in collaboration with Californian designer Una Malan exclusively for the North American market.

Prices start from £585 for the 'Etti' pendant light to £905 for the 'Torino' table lamp.

Bio on last page

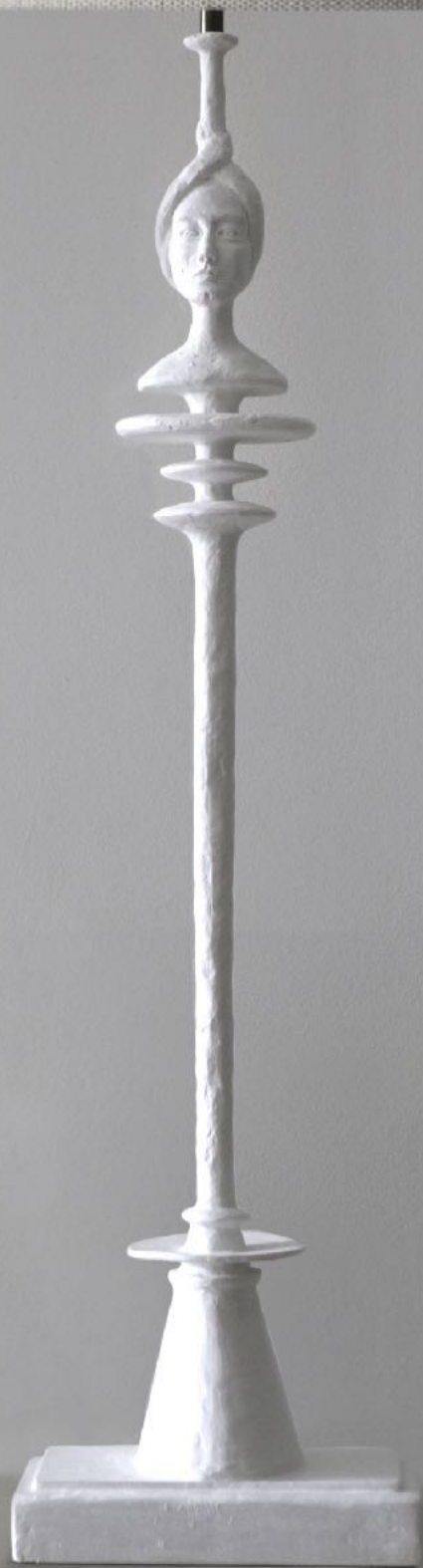


- An exciting & new unique lighting brand
- Exclusives & limited editions coming shortly
- Designed and made by an artist
- Custom colours + bespoke options & finishes
- Reproductions made using local small businesses
- Handmade to order - lead time between 2 - 6 weeks

www.sassyhardwick.com

sassyhardwick@icloud.com





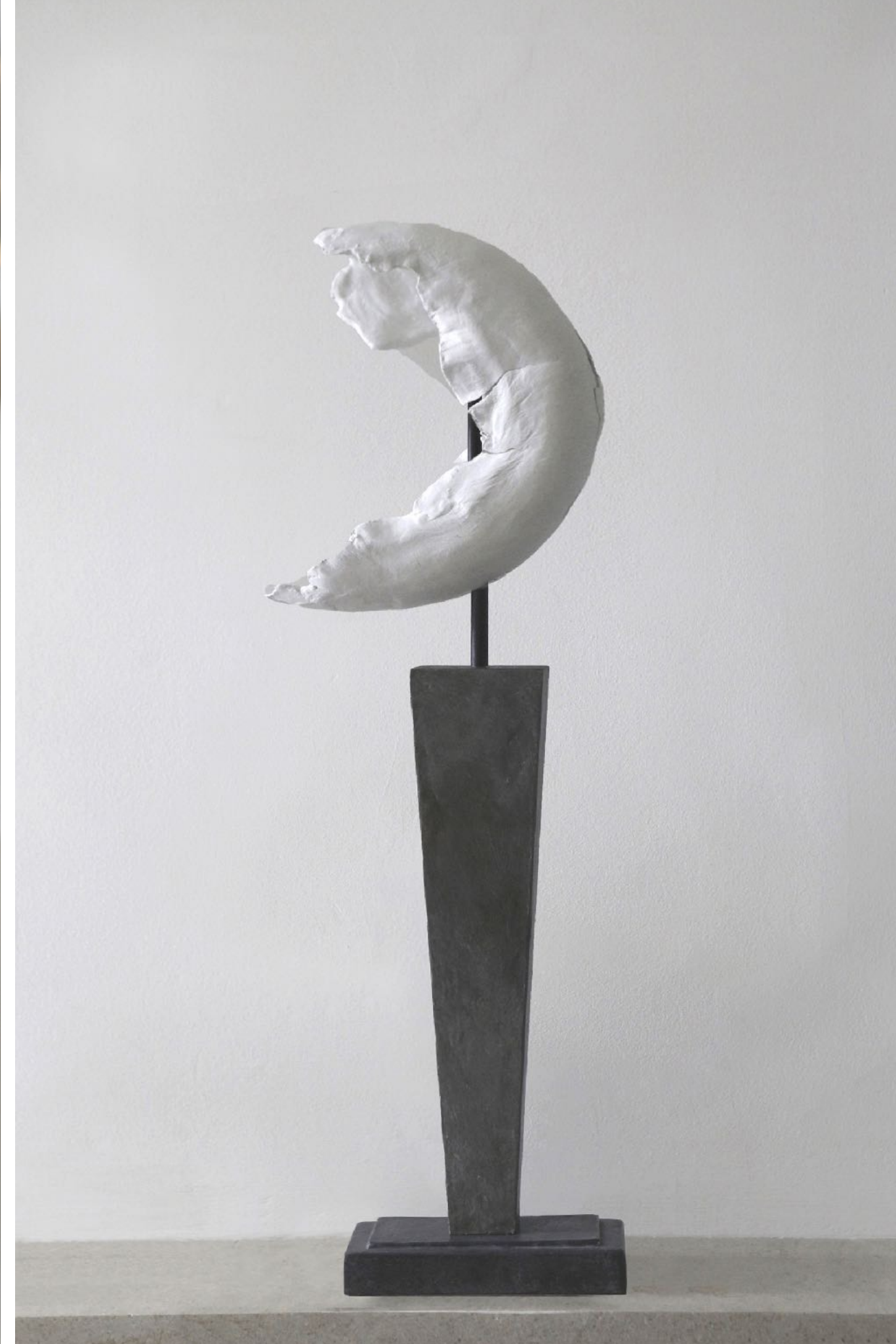












Bio

Sarah Payne is a designer and self taught artist.

Her background is in interiors but during the first lockdown in 2020, like much of the creative industry, she found herself with time on her hands and taught herself to paint. By September she had painted continuously and fallen in love with her newly discovered skill.

Her style is bold yet simple, often isolating her animal subjects which makes it highly recognisable. She loves to paint on a large scale and takes inspiration for her horses from the old masters like Stubbs (Whistlejacket in particular) painting them in a contemporary style, and always with attitude and expression. She works mostly in oils and acrylics and focuses much of her art on figurative and equine subjects but she also paints many abstracts.

She opened an instagram account in autumn 2020 and was simultaneously spotted by Una Malan, who now represents her art in California, and Carole Bamford, who not only purchased and commissioned numerous works but also hosted a solo exhibition for her at Daylesford.

Within 2 years she had garnered a discerning client list from her instagram audience (where she goes by the moniker Sassy Hardwick) to film directors, interior designers and high net worth individuals. Sarah sells her work to a world wide client base.

In January '23 she designed and handmade 6 wall lights for a clients home, after which she felt inspired to create more designs of wall lights, table lamps and hanging lights and a few fun pieces of home decor resulting in a small collection which she intends to grow along side her fine art.

Payne is based in Surrey UK.

-End-