



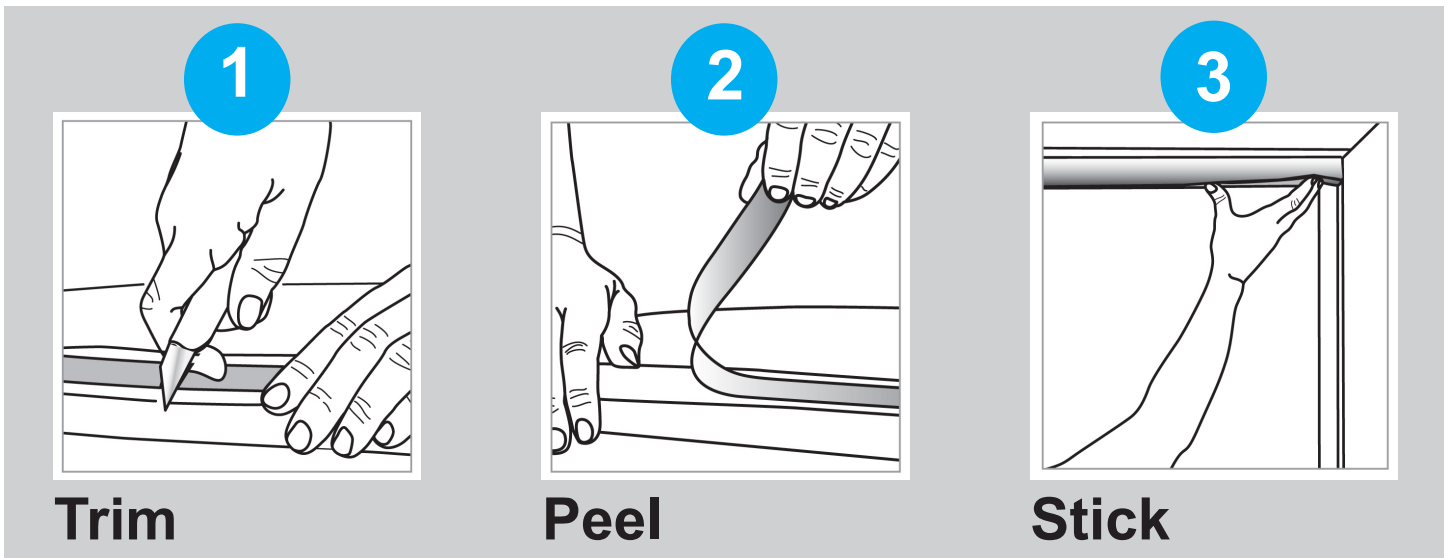
The Look **You** Want
Without the Work.



Scan for Install Video

Original Pleated®

- Use a utility knife or a sharp kitchen knife
- Press firmly across the width of the shade for at least 30 seconds & allow at least 30 minutes for adhesive to cure before operating
- Raise & lower shade with included clips
- For larger windows overlap two or more shades
- Lightly dust and/or vacuum with upholstery attachment to clean



FAQ

redishade.com/faq

IMPORTANT: Clean surface before placing shade. Adhesive is not recommended for use on varnished, lacquered, or freshly painted surfaces. Do not use on wallpaper. If in doubt, test before using.

CAUTION: Please do not hang Redi Shade window shades close or near flames (candles, heaters, etc...)