

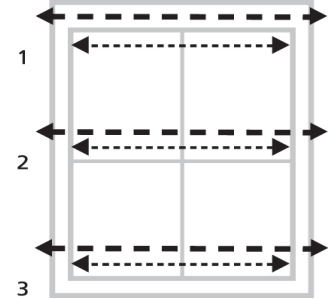
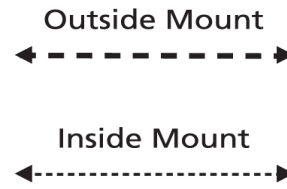


Included: Easy Lift Shade with Trimming Scale | Trimming Guide  
FAQ [redishade.com/faq](http://redishade.com/faq)

## 1 Measure

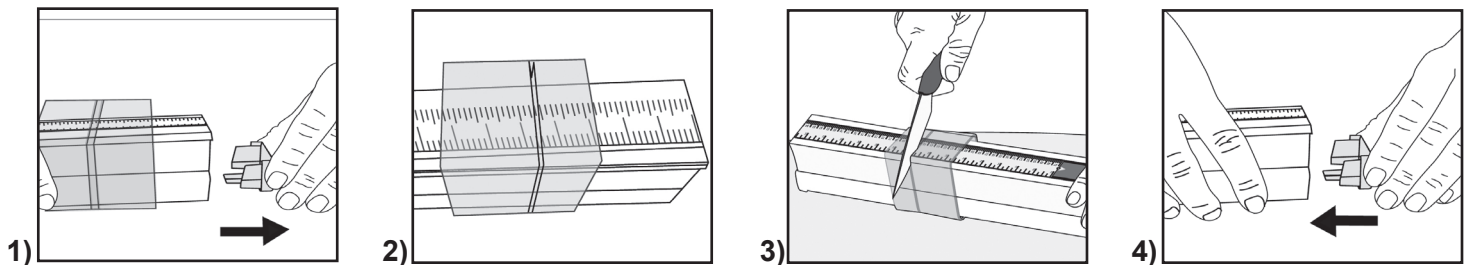
Measure your window width in 3 locations. Use the smallest measurement.

*Please note our patented trimming scale already takes into account the clearance deduction for inside mount. Do not cut past the warning line on the trimming scale.*



## 2 Trim

A sharp kitchen knife with a 3.5" inch blade is recommended

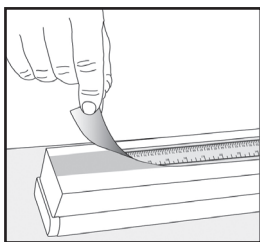


- 1) Remove bottom rail end caps from both sides
- 2) Place trimming guide at exact desired width on each side (**no clearance deduction needed; it's already included**)
- 3) Position the knife blade at an angle on the top of the shade at your exact measurement and repeat on the other side
  - a) Press firmly cutting through rails and fabric with a rocking motion and constant pressure
  - b) Trim each side of the shade to the same exact window measurement
- 4) Replace end caps on bottom rail

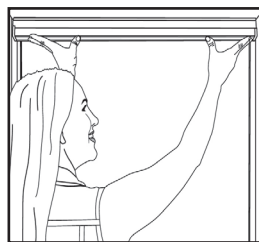
## 3 Install & Operate

**Before Installation:** Clean mounting surface with alcohol and allow to dry. Fresh paint should be fully cured (check paint manufacturer's cure time). Adhesive is not recommended for use on varnished, lacquered, or freshly painted surfaces.

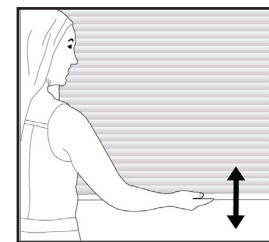
**After Installation:** **Please allow at least 30 minutes for the adhesive to cure before operating shade.**



1) Peel to remove liner



2) Press firmly across width of shade for at least **30 seconds**



3) Pull shade down to lower and push up to raise

## 4 Cleaning & Troubleshooting

Lightly dust or vacuum with upholstery attachment. For spot cleaning lightly blot with mild detergent and warm water. The shade is not intended for dry cleaning, spot removers, strong detergent or full water immersion.

If your shade becomes unbalanced and hangs unevenly, open gently to full length to reset.