

SHILTON REELS

CL SERIES

Operating Instructions

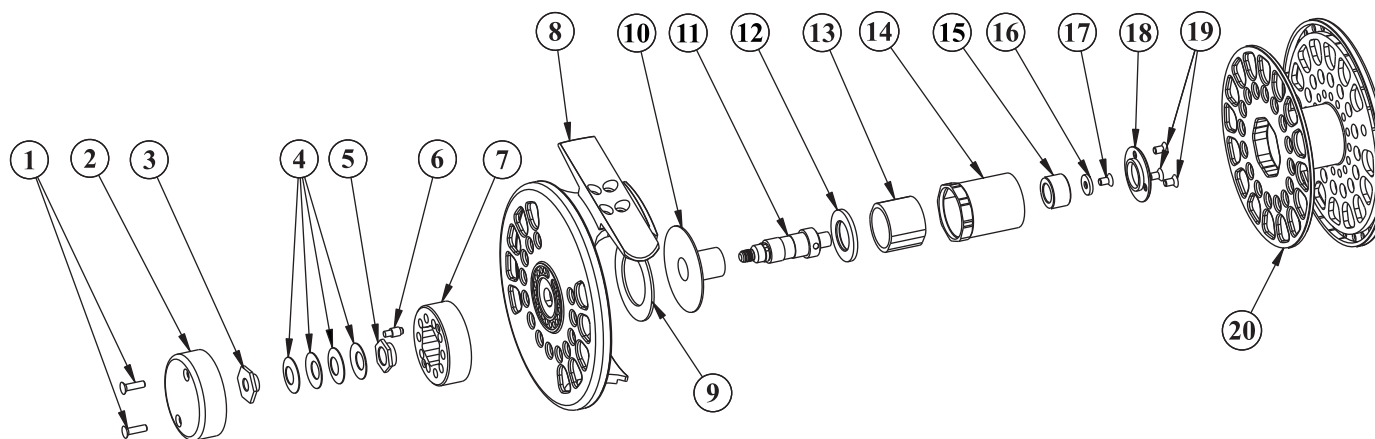
Features & Specifications



CL FRESHWATER SERIES

- Precision machined from 6082 T6 high grade aluminium bar stock
- All components machine crafted from the latest CNC technology
- Fully ventilated spool and frame to assist in weight reduction and line drying
- Anodised finish for maximum corrosion resistance
- Advanced specially formulated carbon fibre disk drag system, running on polished stainless steel disc which delivers a very smooth and low start-up inertia, with zero engagement backlash
- Silent retrieve and drag rotation
- Click type drag knob for consistent setting
- The range of drag settings is custom adjustable to your specific needs
- Spool running on precision roller and deep groove ball bearings in sealed housing
- Exposed palming rim for additional control
- Quick release spool change no loose parts
- Simple right-left hand conversion
- High capacity
- Low weight
- All markings are engraved on reel frame
- Limited Lifetime Warranty

1	DRAG KNOB COVER SCREWS
2	DRAG KNOB COVER
3	DRAG NUT
4	DISC SPRINGS 12 mm
5	SPINDLE NUT
6	SPRING PLUNGER
7	DRAG KNOB
8	FRAME ASSEMBLY
9	DRAG DISC
10	DRAG PLATE
11	SPINDLE ASSEMBLY
12	BEARING SEAL
13	ONE WAY ROLLER BEARING
14	BEARING HOUSING
15	DEEP GROOVE BALL BEARING
16	RETAINING WASHER
17	RETAINING WASHER SCREW
18	BEARING HOUSING END PLATE
19	END PLATE SCREWS
20	SPOOL ASSEMBLY



DRAG ADJUSTMENT

The factory drag setting is appropriate for most fishing situations, You may however wish to change the range of drag settings. A small Pozzi screwdriver is required to accomplish this adjustment.

1. Turn the drag knob to approximately half maximum drag setting
2. Remove the two drag knob cover screws (1) remove the drag knob cover (2) from the drag knob (7) extract the spring plunger (6) from the drag knob (7)
3. To increase the drag setting replace the spring plunger (6) into the hole on the counter clockwise side of the hole from which it was removed.
4. To decrease the drag setting replace the spring plunger (6) into the hole on the clockwise side of the hole from which it was removed.

CHANGING THE DIRECTION OF THE RETRIEVE

1. Remove the spool
2. Using a small Pozzi screwdriver loosen the three bearing housing end plate screws (19) remove the end plate (18) loosen the retaining washer screw (17) remove retaining washer (16) remove the bearing housing (14) from the drag plate (10)
3. Extract the seal (12) from bearing housing (14) remove the one way roller bearing (13) from the bearing housing (14) and re-insert it with the opposite end in the bearing housing (14) replace seal (12)
4. Replace bearing housing (14) on to the drag plate (10) screw on retaining washer (16) replace bearing housing end plate (18) with three screws (19)

MAINTENANCE

We recommend that you clean your reel after each use, particularly if exposed to salt water. Remove the spool from the frame and clean both pieces in warm fresh water. If the reel is submerged in salt water we recommend a complete disassemble and cleaning. Failure to follow these recommendations may void your warranty.

MODEL DIAMETER WEIGHT LINE Wt CAPACITY+BACKING

CL2	7.3 cm	125 g	3 - 6	WF5 + 150 m 20 #
CL3	7.9 cm	130 g	5 - 7	WF6 + 180 m 20 #
CL4	8.5 cm	140 g	6 - 8	WF7 + 220 m 20 #
CL5	9.1 cm	160 g	7 - 9	WF8 + 250 m 20 #
CL6	9.7 cm	175 g	8 - 10	WF9 + 330 m 20 #

SHILTON REELS

PO BOX 8526, EDLEEN, 1625, REPUBLIC OF SOUTH AFRICA
Tel: +27 (0)11 452 5050 E-mail: shilton@worldonline.co.za