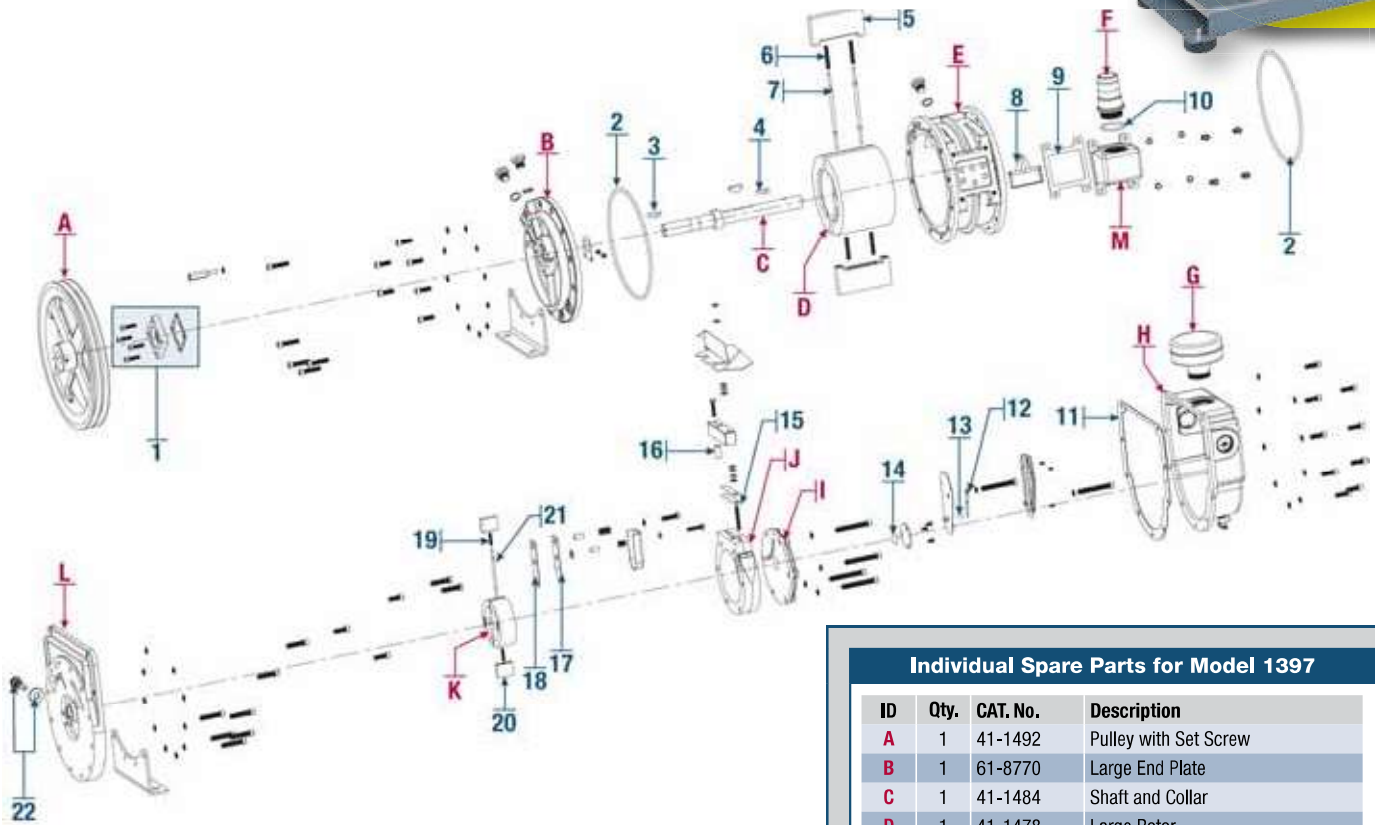


DUOSEAL® Belt-Drive Vacuum Pumps

Model 1397



Individual Spare Parts for Model 1397

ID	Qty.	CAT. No.	Description
A	1	41-1492	Pulley with Set Screw
B	1	61-8770	Large End Plate
C	1	41-1484	Shaft and Collar
D	1	41-1478	Large Rotor
E	1	61-8691	Large Ring
F	1	1393L	Intake Nipple 1-5/8" I.D. Hose
G	1	41-1501	Dust Cap
H	1	41-1482	Oil Case Assembly
I	1	41-1500	Small End Plate
J	1	41-1497	Exhaust Ring
K	1	41-1499	Exhaust Rotor
L	1	61-8689	Center Plate
M	1	61-8693	Intake Chamber

Major Repair Kit CAT. No. 1397K-08 for Model 1397

ID	Qty.	Description	ID	Qty.	Description
Major Repair Kit 1397K-08					
1	1	Mechanical Shaft Seal, 1" CAT. No. 1401F	12	1	Pressure Relief Valve
2	2	O-Ring	13	1	Ball Bearing
3	2	Woodruff Key	14	1	Spacer Disk
4	1	Key for Small Rotor	15	1	Pressure Release Exhaust Valve
5	2	Large Vane Metal	16	1	Spacer
6	4	Large Vane Spring	17	1	Valve Backer
7	2	Large Spring Holder	18	1	Valve Flapper
8	1	Screen Filter	19	2	Small Vane Spring
9	1	Intake Chamber Gasket	20	2	Small Vane Metal
10	1	O-Ring	21	1	Small Spring Holder
11	1	Oil Case Gasket	Minor Repair Kit CAT. No. 1397K-07		
Contains same as Major Kit 1397K-08 except vane ID No. 5 and 20.					

1	1	★1401F	Mechanical Shaft Seal Kit, 1"
1	1	★1397A	V-Belt - 1397
		★1417P-20	Standard Exhaust Filter
		★1417H-01	Replacement Exhaust Filter Element
		★1407K-11	DuoSeal Vacuum Pump Oil -1 Qt.
		★1407K-15	DuoSeal Vacuum Pump Oil -1 Ga.
		★331080-5	5' x 1-5/8" I.D. Vacuum Hose
5	1	41-1477	Large Vane Metal (Requires 2)
20	1	41-1487	Small Vane Metal (Requires 2)
		1371F-01	Belt Guard/Base Kit
		41-2814	Front Cover/Belt Guard
22	1	41-1736	Gas Ballast Valve
		41-0995	Motor Pulley
		41-3753	Oil Case Window (Requires 2)
		726130	Oil Drain Valve
		41-1940A	1 HP Motor, 115/230V, 60Hz, 1Ph

★ - Suggested Spare and Consumable Parts