

WHOLESALE WITH US



CLAY HOUSE CANDLES PRODUCT LINE SHEET

FRESHEN UP YOUR
STORE SHELVES



UNIQUE DESIGNS
STARTING AT
\$15.00



WWW.CLAYHOUSECANDLES.COM

TABLE OF CONTENTS:



PAGES 3-4

ABOUT US

Discover what makes us unique, and learn about our process. Refer to this page for a list of frequently asked questions and information about placing your first order with us.



PAGES 5-11

OUR PRODUCTS

Our most unique product offerings all in one place! Check out individual descriptions for scent notes, burn times, and pricing information.



PAGES 12-18

SEASONALS

Looking for fan favorites to stock your shelves for the change in the seasons? Browse our seasonal selections for options spanning all holidays and times of year.



PAGE 19

CUSTOM ORDERS

Clay House Candles is proud to offer a custom candle curating service for your business. Flip to this section for more information on how to get started.



ABOUT US

EXCEPTIONAL, HANDCRAFTED CANDLES

Clay House Candles creates candles as unique as you! Founded in 2021, we began as a one-woman passion project, with the vision of creating candles that reflect the individuality of each of our customers.

Our 9oz container candles are inspired by both nostalgia and current trends, ensuring a truly memorable experience.

Owner and former pastry chef Tai Clay's creative process involves thinking "Why not?" and testing the most playful ideas, even when they seem impossible.

We take immense pride in the creation of each candle, dedicating ourselves to the use of quality ingredients to ensure a clean, even, and long-lasting burn.

We are proudly black owned, woman-owned, and source all of our candle ingredients from Texas suppliers. Thank you for choosing Clay House Candles, and for supporting our commitment to quality, creativity, and community.



SLOW-MADE WITH CARE

All of our candles are hand-poured, decorated, and packaged with love by one woman in Austin, TX. No mass production here! All pieces of the candles are hand carved and molded out of candle wax one at a time.

HIGH SELL-THROUGH RATE



Introducing our "Best Seller" badge highlighting our most popular designs! These products are in high demand and are adored by our customers.

SHELF-APPEAL MATTERS

Uniqueness is what we do best. We place a high priority on originality in our designs, offering a diverse range of options to choose from. Our products make great gifts! These colorful and playful pieces will bring a sense of whimsy to your store shelves and are sure to draw in customers.

We're always experimenting with new scents and designs, so be sure to check our digital wholesale catalog often to see what's new.

SHIPPING AND DELIVERY

We hand-deliver in the Austin area, charging a per-mile fee. Anything outside our delivery zone will be charged the cost of shipping including tracking, paid for by the retailer. Please let us know if you would rather pick up your order. We are located in North Austin, 78759.



PLACING YOUR ORDER

Stocking up with us is a breeze! The following benefits provide your business with a low-risk method of ensuring we're a good fit for your store:

- \$150 order minimum
- Low case sizes of 4 candles per case
- Net 30 terms
- 5% discount if invoice is paid within 48 hours of receipt
- Credit card, PayPal, ACH accepted
- 7-10 business day lead time provided upon order confirmation

Contact wholesale@clayhousecandles.com when you're ready to get started! All invoices are generated and delivered via Shopify.

CLAY HOUSE CLASSICS



Introducing our core catalog, these SKUs are available year-round and make up our main lineup. Refer to our bulleted details for scent notes and pricing information.



Keep an eye out for our “Best Seller” badge! These products are fan favorites and tend to have a high sell-through rate



SKUs with this icon are more likely to discolor over time. It's totally natural, but to help prevent discoloration, keep your inventory in a cool, dry place out of direct sunlight.



SPECS:

- 45-50 hour burn time
- 9.5oz (266g) net weight.
- Proprietary soy/paraffin wax blend
- Cotton wick (lead-free)
- Premium fragrance oils



BIRTHDAY CAKE

SKU: 1001

SCENT NOTES:

TOP: Coconut Shavings, Sugared Berries

MIDDLE: Pink Hawthorne, Melted Butter

BOTTOM: Sweet Caramel, Creamy Vanilla

PRICING: Per unit: \$15.00, MSRP: \$30-\$34
Case size: 4 units, Per case: \$60



SPECS:

- 35 hour burn time
- 8oz (224g) net weight
- Proprietary soy/paraffin wax blend
- Cotton wick (lead-free)
- Premium fragrance oils



CACTUS FLOWER

SKU: 1016

SCENT NOTES:
TOP: Citrus, Lily

MIDDLE: Creamy Coconut, Golden Amber, Rose
BOTTOM: Sheer Musk, Sandalwood, Cactus Blossom

PRICING: Per unit: \$15.00, MSRP: \$30-\$34
Case size: 4 units, Per case: \$60



BROWN SUGAR BOBA

SKU: 1002

SCENT NOTES:
TOP: Bergamot, Almond, Earl Grey Tea Leaves

MIDDLE: Caramelized Brown Sugar, Cinnamon

BOTTOM: Amber, Musk, Rich Vanilla

PRICING: Per unit: \$15.00, MSRP: \$30-\$34
Case size: 4 units, Per case: \$60

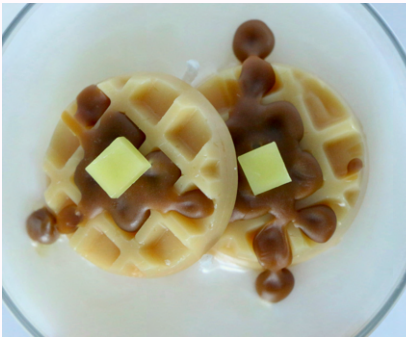


SPECS:

- 45-50 hour burn time
- 9.5oz (266g) net weight.
- Proprietary soy/paraffin wax blend
- Mineral Oil-based Gel Wax
- Zinc wick (lead-free)
- Premium fragrance oils

SPECS:

- 54 hour burn time
- 9.5oz (266g) net weight
- Proprietary soy/paraffin wax blend
- Cotton wick (lead-free)
- Premium fragrance oils



BUTTERED WAFFLES

SKU: 1004

SCENT NOTES:

TOP: Salted Butter, Canadian Maple Syrup

MIDDLE: Coconut, Spun Caramel

BOTTOM: Vanilla, Sugar, Tonka Bean

PRICING: Per unit: \$15.00, MSRP: \$30-\$34
Case size: 4 units, Per case: \$60



CEREAL MILK

SKU: 1006

SCENT NOTES:

TOP: Citrus Peel

MIDDLE: Ripe Cherry, Juicy Orange

BOTTOM: Sugared Vanilla, Sandalwood

PRICING: Per unit: \$15.00, MSRP: \$30-\$34
Case size: 4 units, Per case: \$60



SPECS:

- 45-50 hour burn time
- 9.5oz (266g) net weight.
- Proprietary soy/paraffin wax blend
- Cotton wick (lead-free)
- Premium fragrance oils

SPECS:

- 45-50 hour burn time
- 9.5oz (266g) net weight
- Proprietary soy/paraffin wax blend
- Cotton wick (lead-free)
- Premium fragrance oils



CREAMY CASHMERE

SKU: 1007

SCENT NOTES:

TOP: Mandarin, Coconut, Cocoa Butter

MIDDLE: Muget, Sandalwood, Creamy Vanilla, Patchouli

BOTTOM: Musk

PRICING: Per unit: \$15.00, MSRP: \$30-\$34
Case size: 4 units, Per case: \$60



FINE ASS MAN

SKU: 1008

SCENT NOTES:

TOP: Cologne, Bergamot, Lemon, Aromatics

MIDDLE: Tobacco Clove, Anise, Smoke

BOTTOM: Sandalwood, Patchouli, Amber, Musk, Cedar

PRICING: Per unit: \$15.00, MSRP: \$30-\$34
Case size: 4 units, Per case: \$60



SPECS:

- 45-50 hour burn time
- 9.5oz (266g) net weight
- Proprietary soy/paraffin wax blend
- Cotton wick (lead-free)
- Premium fragrance oils

SPECS:

- 45-50 hour burn time
- 9.5oz (266g) net weight.
- Proprietary soy/paraffin wax blend
- Cotton wick (lead-free)
- Premium fragrance oils



FRUIT SALAD



SKU: 1043

SCENT NOTES:

TOP: Valencia Orange, White Pineapple

MIDDLE: Cara Orange, Strawberry, Raspberry

BOTTOM: Navel Orange, Orange Leaves

PRICING: Per unit: \$15.00, MSRP: \$30-\$34
Case size: 4 units, Per case: \$60



ISLAND MARGARITA

SKU: 1010

SCENT NOTES:

TOP: Valencia Orange, Salted Lime, Mexican Peach Nectar

MIDDLE: Freesia, Lotus Flower

BOTTOM: Mint, Spice, Silver Tequila

PRICING: Per unit: \$15.00, MSRP: \$30-\$34
Case size: 4 units, Per case: \$60

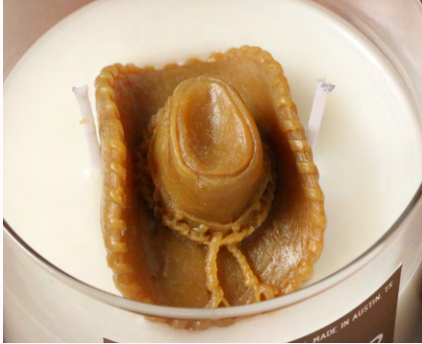


SPECS:

- 45-50 hour burn time
- 9.5oz (266g) net weight
- Proprietary soy/paraffin wax blend
- Mineral Oil-based Gel Wax
- Zinc wick (lead-free)
- Premium fragrance oils

SPECS:

- 35-40 hour burn time
- 8oz (226g) net weight
- Proprietary soy/paraffin wax blend
- Cotton wick (lead-free)
- Premium fragrance oils



LONE STAR LEATHER

SKU: 1012

SCENT NOTES:

TOP: Coriander, Clove

MIDDLE: Tanned Leather, Tobacco Leaf

BOTTOM: Toasted Oak, Earthy Woods

PRICING: Per unit: \$15.00, MSRP: \$30-\$34
Case size: 4 units, Per case: \$60



MONSTERA

SKU: 1013

SCENT NOTES:

TOP: Cologne, Bergamot, Lemon, Aromatics

MIDDLE: Tobacco Clove, Anise, Smoke

BOTTOM: Sandalwood, Patchouli, Amber, Musk, Cedar

PRICING: Per unit: \$15.00, MSRP: \$30-\$34
Case size: 4 units, Per case: \$60

SPECS:

- 45-50 hour burn time
- 9.5oz (266g) net weight
- Proprietary soy/paraffin wax blend
- Cotton wick (lead-free)
- Premium fragrance oils

SPECS:

- 45-50 hour burn time
- 9.5oz (266g) net weight
- Proprietary soy/paraffin wax blend
- Cotton wick (lead-free)
- Premium fragrance oils



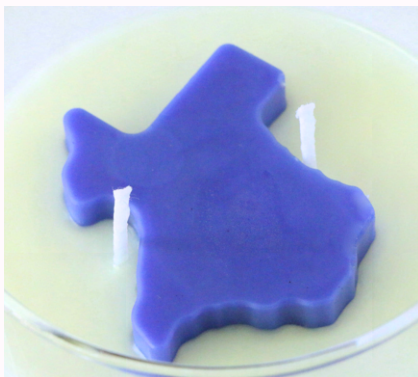
SWEET CHURRO

SKU: 1020

SCENT NOTES:

TOP: Sweet Buttery Dough,
MIDDLE: Maple Syrup, Spicy Cinnamon
BOTTOM: Vanilla Bean

PRICING: Per unit: \$15.00, MSRP: \$30-\$34
Case size: 4 units, Per case: \$60



TEXAS BLUEBONNET

SKU: 1017

SCENT NOTES:

TOP: Peach, Bergamot, White Berries
MIDDLE: Floral Heart of Bluebonnet Flower, Ylang Ylang
BOTTOM: Clove Buds, Musk

PRICING: Per unit: \$15.00, MSRP: \$30-\$34
Case size: 4 units, Per case: \$60



SPECS:

- 45-50 hour burn time
- 9.5oz (266g) net weight
- Proprietary soy/paraffin wax blend
- Cotton wick (lead-free)
- Premium fragrance oils

CANDLES FOR ALL SEASONS



Whether it be for an upcoming holiday or just the change of the seasons, here you'll find a variety of offerings to celebrate the time of the year. Refer to our bulleted details for scent notes and availability dates.



Keep an eye out for our "Best Seller" badge! These products are fan favorites and tend to have a high sell-through rate



SKUs with this icon are more likely to discolor over time. It's totally natural, but to help prevent discoloration, keep your inventory in a cool, dry place out of direct sunlight.



BE MINE

SKU: 1022, **AVAILABLE** JAN 1-FEB 5



SCENT NOTES:

TOP: Cotton Candy, Orange, Licorice, Fruity
MIDDLE: Berry Bergamot, Pink Chiffon
BOTTOM: Caramel, Powder, Woods, Vanilla

PRICING: Per unit: \$15.00, MSRP: \$30-\$34
Case size: 4 units, Per case: \$60



SPECS:

- 45-50 hour burn time
- 9.5oz (266g) net weight
- Proprietary soy/paraffin wax blend
- Cotton wick (lead-free)
- Premium fragrance oils



SPECS:

- 45-50 hour burn time
- 9.5oz (266g) net weight
- Proprietary soy/paraffin wax blend
- Cotton wick (lead-free)
- Premium fragrance oils



RASPBERRY CUPCAKE

SKU: 1037, **AVAILABLE** JAN 1-FEB 5

SCENT NOTES:

TOP: Sweet Butter, Rum, Gala Apple, Mixed Berry

MIDDLE: Raspberries, Brown Sugar, Lemongrass

BOTTOM: Creamy Custard, Vanilla, Amaretto

PRICING: Per unit: \$15.00, MSRP: \$30-\$34
Case size: 4 units, Per case: \$60



CAMPFIRE MARSHMALLOW

SKU: 1005, **AVAILABLE** MAY 1-OCT 1

SCENT NOTES:

TOP: Spice, Velvet Woods

MIDDLE: Fluffy Toasted Marshmallow

BOTTOM: Vanilla Bean, Musk, Golden Amber

PRICING: Per unit: \$15.00, MSRP: \$30-\$34
Case size: 4 units, Per case: \$60

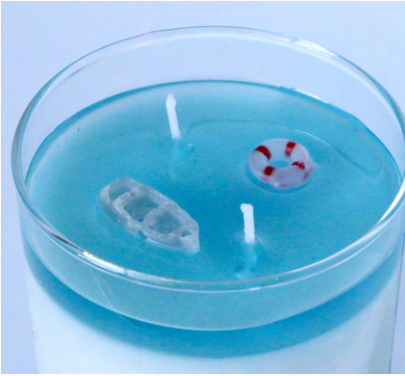


SPECS:

- 45 hour burn time
- 9oz (252g) net weight
- Proprietary soy/paraffin wax blend
- Cotton wick (lead-free)
- Premium fragrance oils

SPECS:

- 45-50 hour burn time
- 9.5oz (266g) net weight
- Proprietary soy/paraffin wax blend
- Mineral Oil-based Gel Wax
- Zinc wick (lead-free)
- Premium fragrance oils



CLEAR WATERS

SKU: 1014, **AVAILABLE MAY 1-OCT 1**

SCENT NOTES:

TOP: White Nectarine, Ozone

MIDDLE: Thyme, Lavender, Water Hyacinth

BOTTOM: Green Balsam, Vanilla Salve

PRICING: Per unit: \$15.00, MSRP: \$30-\$34
Case size: 4 units, Per case: \$60



FOREST FLOOR

SKU: 1045, **AVAILABLE MAY 1-OCT 1**

SCENT NOTES:

TOP: White Peppercorn, Citrus Peel, Herbal
MIDDLE: Cypress Needle, Green Gourd, Wild Geranium

BOTTOM: Patchouli, Amber, Dried Twig

PRICING: Per unit: \$15.00, MSRP: \$30-\$34
Case size: 4 units, Per case: \$60

SPECS:

- 45-50 hour burn time
- 9.5oz (266g) net weight
- Proprietary soy/paraffin wax blend
- Eco-glitter
- Cotton wick (lead-free)
- Premium fragrance oils

SPECS:

- 45 hour burn time
- 9oz (252g) net weight
- Proprietary soy/paraffin wax blend
- Cotton wick (lead-free)
- Premium fragrance oils



APPLE PIE

SKU: 1044, **AVAILABLE** AUG 1-DEC 1



SCENT NOTES:

TOP: Hearty Apple

MIDDLE: Brown Sugar, Spiced Apple Cider, Cinnamon

BOTTOM: Buttery Baked Pie Crust

PRICING: Per unit: \$15.00, MSRP: \$30-\$34
Case size: 4 units, Per case: \$60



AUTUMN LEAVES

SKU: 1021, **AVAILABLE** AUG 1-DEC 1

SCENT NOTES:

TOP: Autumn Leaves

MIDDLE: Sweet Spearmint, Eucalyptus, Juniper Berries

BOTTOM: Bright Sage, Woods

PRICING: Per unit: \$15.00, MSRP: \$30-\$34
Case size: 4 units, Per case: \$60

SPECS:

- 45 hour burn time
- 9oz (252g) net weight
- Proprietary soy/paraffin wax blend
- Cotton wick (lead-free)
- Premium fragrance oils

SPECS:

- 45-50 hour burn time
- 9.5oz (266g) net weight
- Proprietary soy/paraffin wax blend
- Cotton wick (lead-free)
- Premium fragrance oils



PUMPKIN PECAN WAFFLES

SKU: 1026, AVAILABLE AUG 1-DEC 1

SCENT NOTES:

TOP: Browned Butter, Whipped Cream

MIDDLE: Vanilla Bean, Pumpkin Purée, Maple Syrup

BOTTOM: Cinnamon, Brown Sugar, Tonka Bean

PRICING: Per unit: \$15.00, MSRP: \$30-\$34
Case size: 4 units, Per case: \$60



TRUE CRIME AND CHILL



SKU: 1028, AVAILABLE AUG 1- DEC 1

SCENT NOTES:

TOP: Citron, Vanilla Orchid, Heliotrope

MIDDLE: Amber Mist, Tonka Bean, Palo Santo

BOTTOM: Black Cedar, Guaiacwood, Oakmoss

PRICING: Per unit: \$15.00, MSRP: \$30-\$34
Case size: 4 units, Per case: \$60

SPECS:

- 45-50 hour burn time
- 9.5oz (266g) net weight
- Proprietary soy/paraffin wax blend
- Cotton wick (lead-free)
- Premium fragrance oils

SPECS:

- 45-50 hour burn time
- 9.5oz (266g) net weight
- Proprietary soy/paraffin wax blend
- Cotton wick (lead-free)
- Premium fragrance oils



COOKIES FOR SANTA

SKU: 1031, **AVAILABLE** OCT 1-DEC 10

SCENT NOTES:

TOP: Cardamom, Spun Sugar, Spiced Cookies

MIDDLE: Nutmeg Oil, Ginger Oil, Warm Gingerbread

BOTTOM: Vanilla, Spiced Chai Musk, Woods

PRICING: Per unit: \$15.00, MSRP: \$30-\$34
Case size: 4 units, Per case: \$60



I MELT DOWN TO REVEAL MARSH-MALLOW INSIDE!



HOT COCOA BOMB

SKU: 1034, **AVAILABLE** OCT 1- DEC 10

SCENT NOTES:

TOP: Citron Zest, Vanilla Extract

MIDDLE: Brownie Bites, Hot Cocoa, Brown Sugar

BOTTOM: Sprinkled Sugar, Rich Dark Chocolate, Musk

PRICING: Per unit: \$15.00, MSRP: \$30-\$34
Case size: 4 units, Per case: \$60

SPECS:

- 45-50 hour burn time
- 9oz (252g) net weight
- Proprietary soy/paraffin wax blend
- Flame-Retardant coated sprinkles
- Cotton wick (lead-free)
- Premium fragrance oils

SPECS:

- 45-50 hour burn time
- 9.5oz (266g) net weight
- Proprietary soy/paraffin wax blend
- Cotton wick (lead-free)
- Eco-Glitter
- Premium fragrance oils



VANILLA MYRRH

SKU: 1049, **AVAILABLE** OCT 1-DEC 10

SCENT NOTES:

TOP: Vanilla Bean, Jasmine

MIDDLE: Amber, Smoke

BOTTOM: Sandalwood, Tonka Bean

PRICING: Per unit: \$15.00, MSRP: \$30-\$34
Case size: 4 units, Per case: \$60



WHITE CHRISTMAS

SKU: 1047, **AVAILABLE** OCT 1- DEC 10



SCENT NOTES:

TOP: White Peppercorn, Clove Bud, Cypress Needle

MIDDLE: Christmas Tree, Pine Sap, Pine Cones

BOTTOM: Evergreen, Cedarwood, Fresh Earth

PRICING: Per unit: \$15.00, MSRP: \$30-\$34
Case size: 4 units, Per case: \$60

SPECS:

- 45-50 hour burn time
- 9.5oz (266g) net weight
- Proprietary soy/paraffin wax blend
- Cotton wick (lead-free)
- Premium fragrance oils



CUSTOM DESIGN SERVICES

Have a special request or idea for a custom candle? We're happy to work our candle magic to bring your vision to life!

At Clay House Candles, we see wax as a blank slate, and want to work with you to create a truly one-of-a-kind concept unique to your brand. We offer a full in-house service that not only includes candle design, but also label printing. We encourage you to use your brand assets as well to ensure the final product looks professional and represents your company.

Our one time design fee covers the cost of research and development, ingredient/material sourcing, scent/safety testing, 3D printing, mold making etc. This allows for you to have more input in the process, as well as allowing us to put an extra amount of time and care into your special piece.

- One-time design fee of \$1,000, requiring a 50% initial deposit, with the remaining due upon delivery of design
- Zoom brainstorming sessions/email correspondence with Tai during the entirety of the project
- MOQ of 12 units
- Price per unit varies, anywhere from \$11-\$24 a piece, depending on the final MSRP
- Lead time ~2 months, sometimes less, depending on the design
- Work with a small business to create something your customers can only get from you
- Final delivered product is proprietary to your company. The final design belongs to you.



MORE INFO:

WWW.CLAYHOUSECANDLES.COM/PAGES/WHOLESALE
OR EMAIL
WHOLESALE@CLAYHOUSECANDLES.COM