

ORNAMENT
MARBLE
CEMENT
STONE
WOOD
OPUS

■
TERRA STONE



ORNAMENT
MARBLE
CEMENT
STONE
WOOD
OPUS

■
TERRA STONE



“

There is no denying the grandeur of stone.
Be inspired by our collection of stone designs,
exclusively created to bring elegance and
beauty to your home.

”

TERRA STONE

Terra Stone is a multi-coloured and complex stone that bears the traces of the ages and reveals to us the simplicity with which Mother Nature creates masterpieces.

We reproduced the stone in its natural colours, preserving the design and the surface to be able to bring it to our homes in all its purity. Terra Stone envelops us in well-being and harmony as only uncontaminated nature can do.

Cherished aesthetics, perfect in ergonomic and modular sizes. It offers excellent technical characteristics and absolute usability.





1

SURFACE
Matt



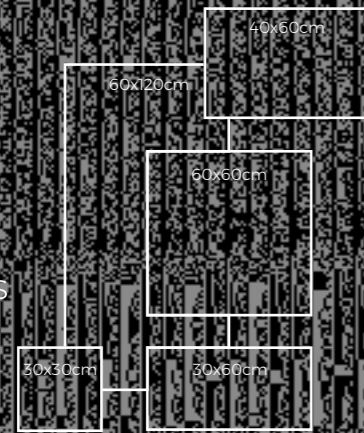
2

THICKNESS



5

FORMATS



4

COLOURS



LIGHT



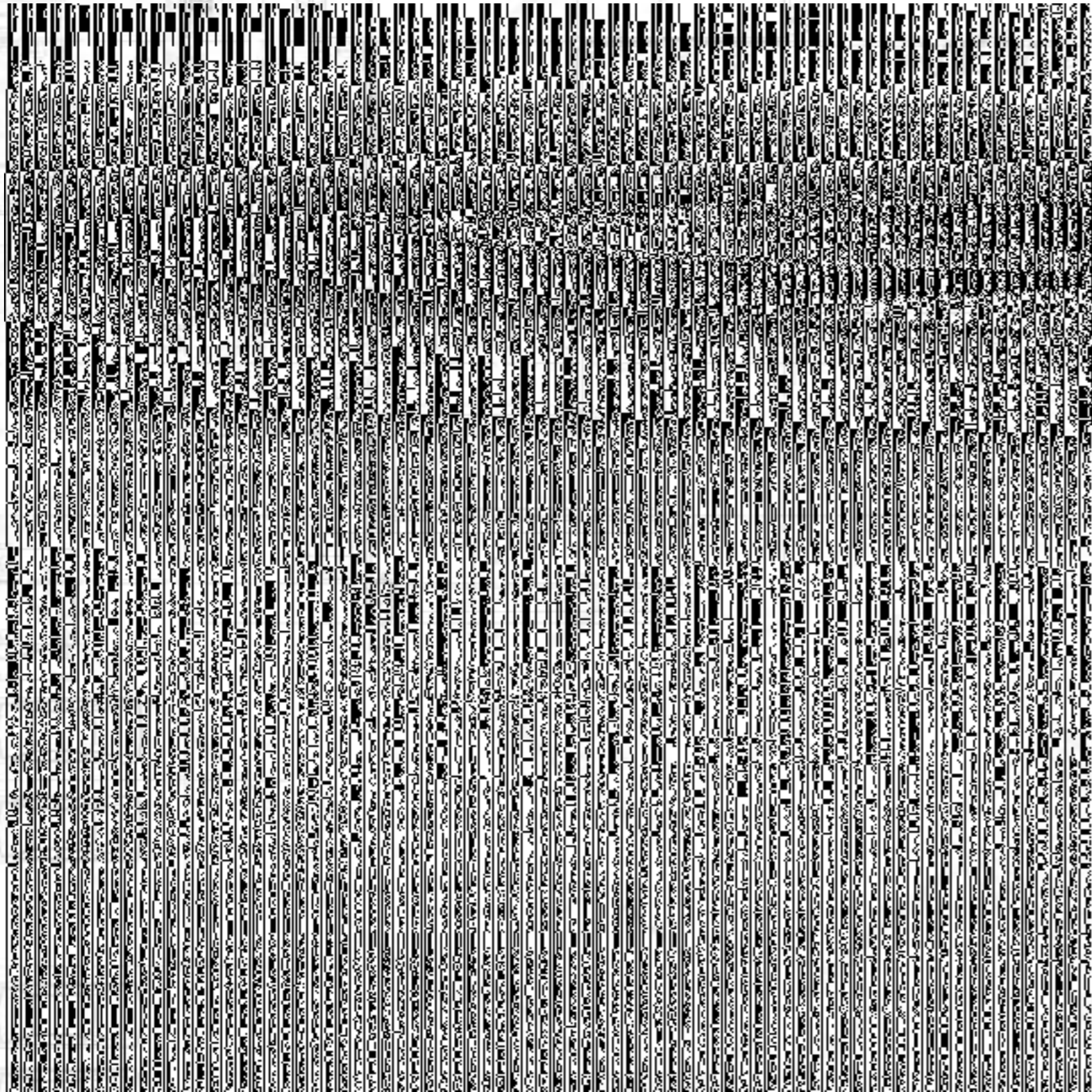
VORY



CINDER



GRAPHITE



“ TERRA STONE
LIGHT

M3141
30 x 30CM ▼

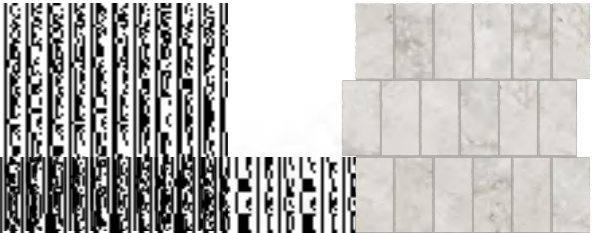
Terra Stone Mosaic
29.8x29.8CM ▼



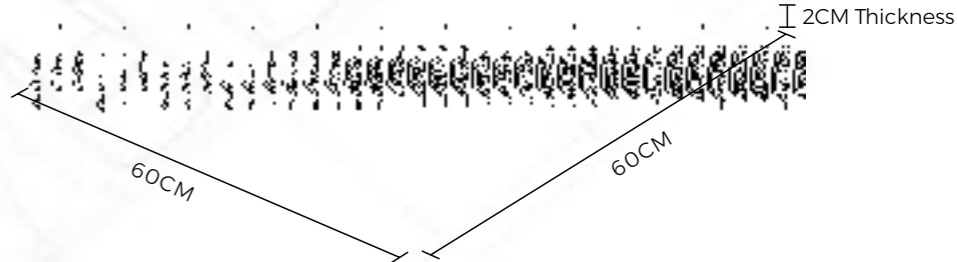
M36141
30 x 60CM ▲

M126141
60 x 120CM ▶

M6141
60 x 60CM ▼

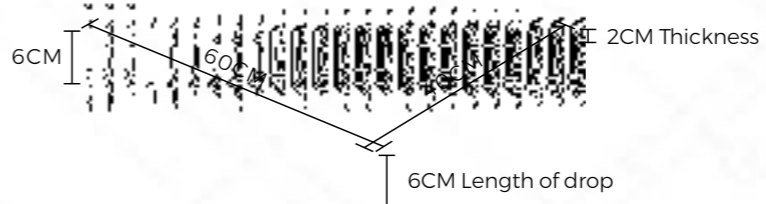


M6141H
60 x 60 x 2CM ▶

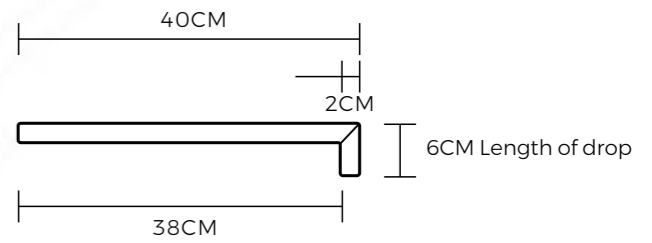


Top Profile - Terra Stone Bullnose Paver

Side Profile - Terra Stone Bullnose Paver



Bullnose Paver
40x60x6CM 2CM



Bullnose Paver 40x60x6CM 2CM

“

TERRA STONE LIGHT

FORMATS
60x120CM
60x60CM
30x60CM
30x30CM

SURFACES
Matt

APPLICATIONS
Interior
Exterior
Wall
Floor
Residential

“

12

TWELVE
RANDOM FACES
60x120cm

WALL TERRA STONE LIGHT 30 X 60cm TERRA STONE MOSAIC 29,8 X 29,8cm



Please note: tile patterns are random and may not represent exactly as shown in the photo.



Please note: tile patterns are random and may not represent exactly as shown in the photo.



TERRA STONE LIGHT

FORMATS

60x120CM
60x60CM
30x60CM
30x30CM

SURFACES

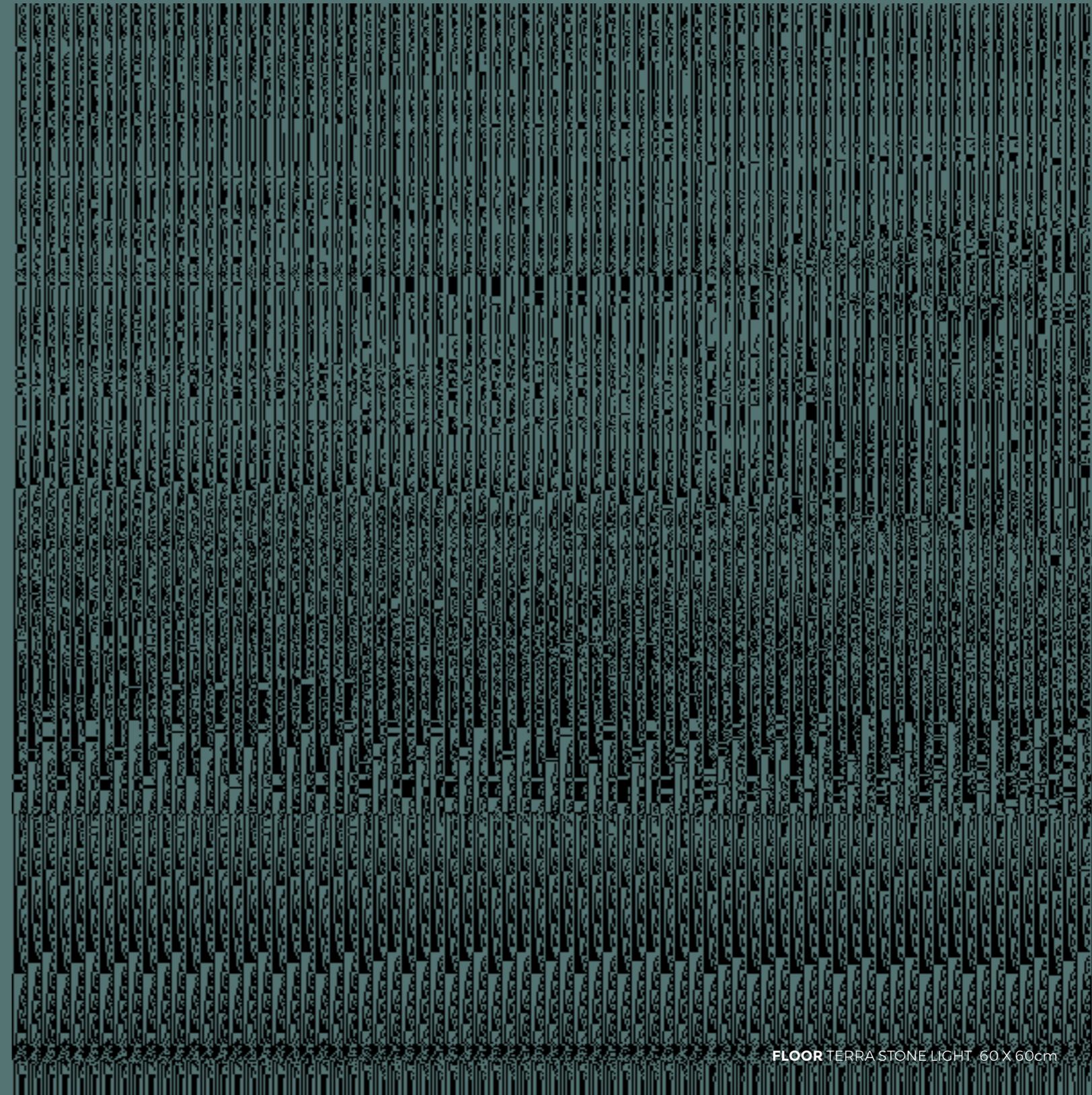
Matt

APPLICATIONS

Interior
Exterior
Wall
Floor
Residential



24
TWENTY-FOUR
RANDOM FACES
60x60cm



FLOOR TERRA STONE LIGHT, 60 X 60cm



Please note: tile patterns are random and may not represent exactly as shown in the photo.



TERRA STONE **LIGHT**

FORMATS

60x120CM
60x60CM
30x60CM
30x30CM

SURFACES

Matt

APPLICATIONS

Interior
Exterior
Wall
Floor
Residential



48

FORTY-EIGHT
RANDOM FACES
30x60cm



TERRA STONE **LIGHT**

FORMATS

60x120CM
60x60CM
30x60CM
30x30CM

SURFACES

Matt

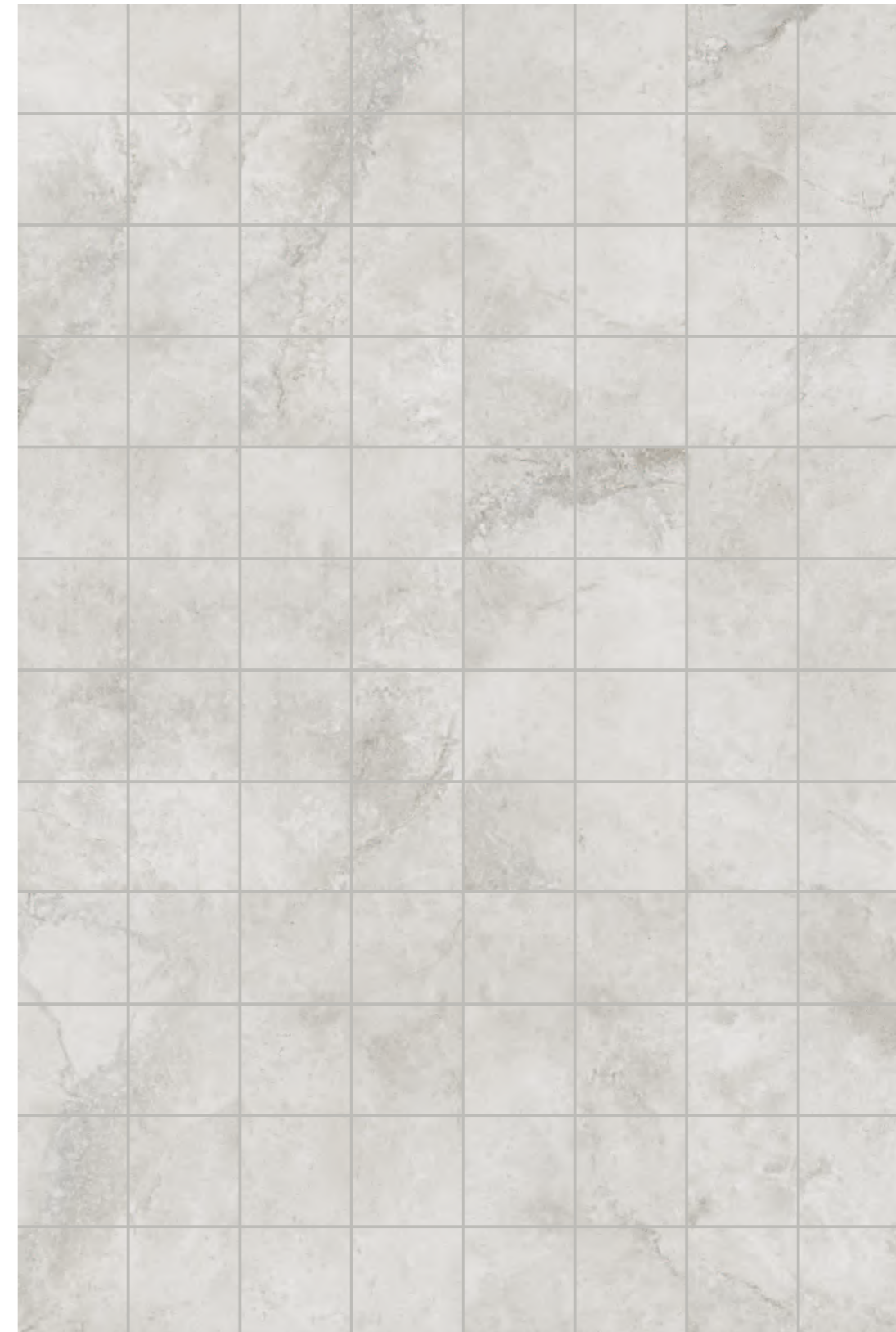
APPLICATIONS

Interior
Exterior
Wall
Floor
Residential

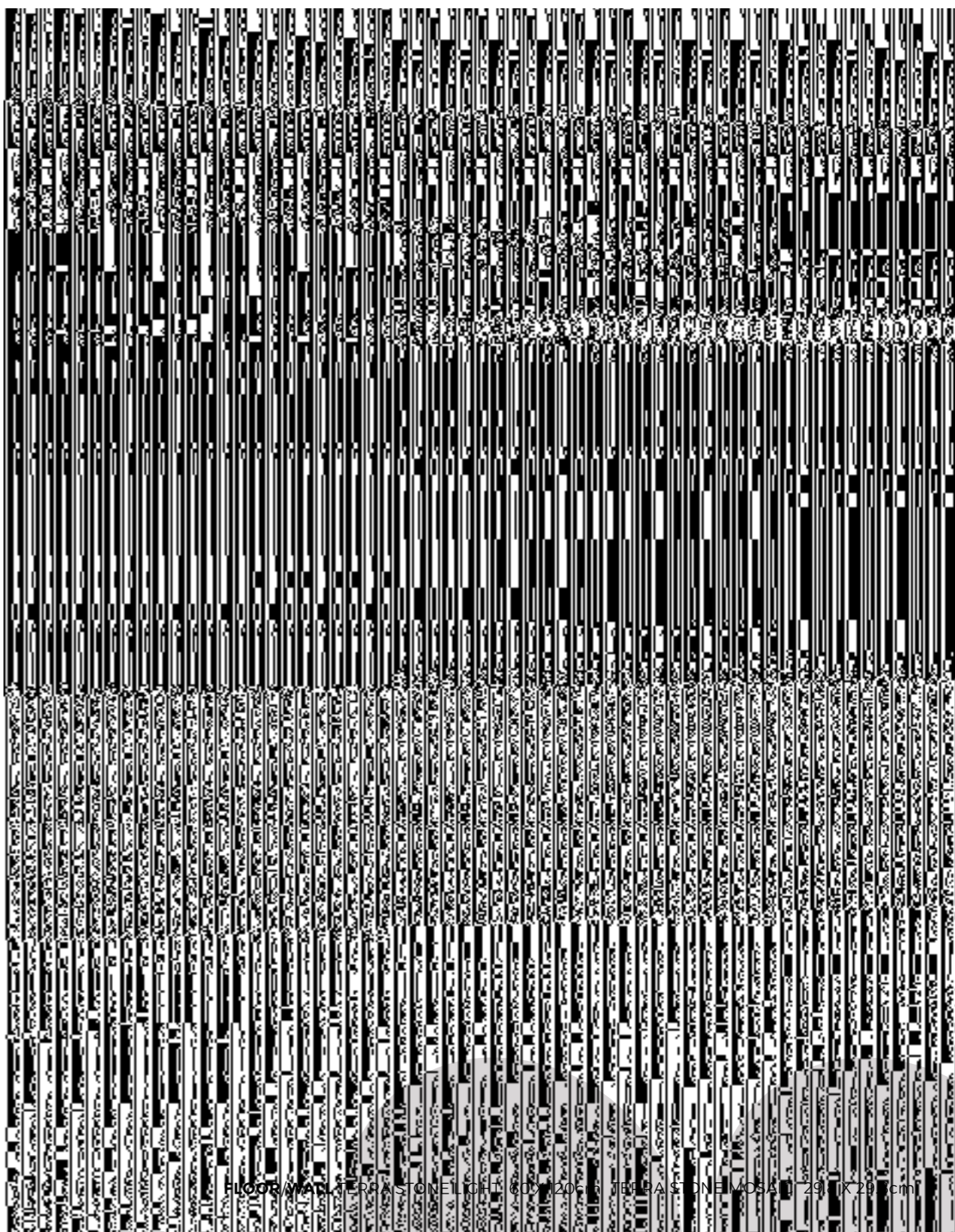
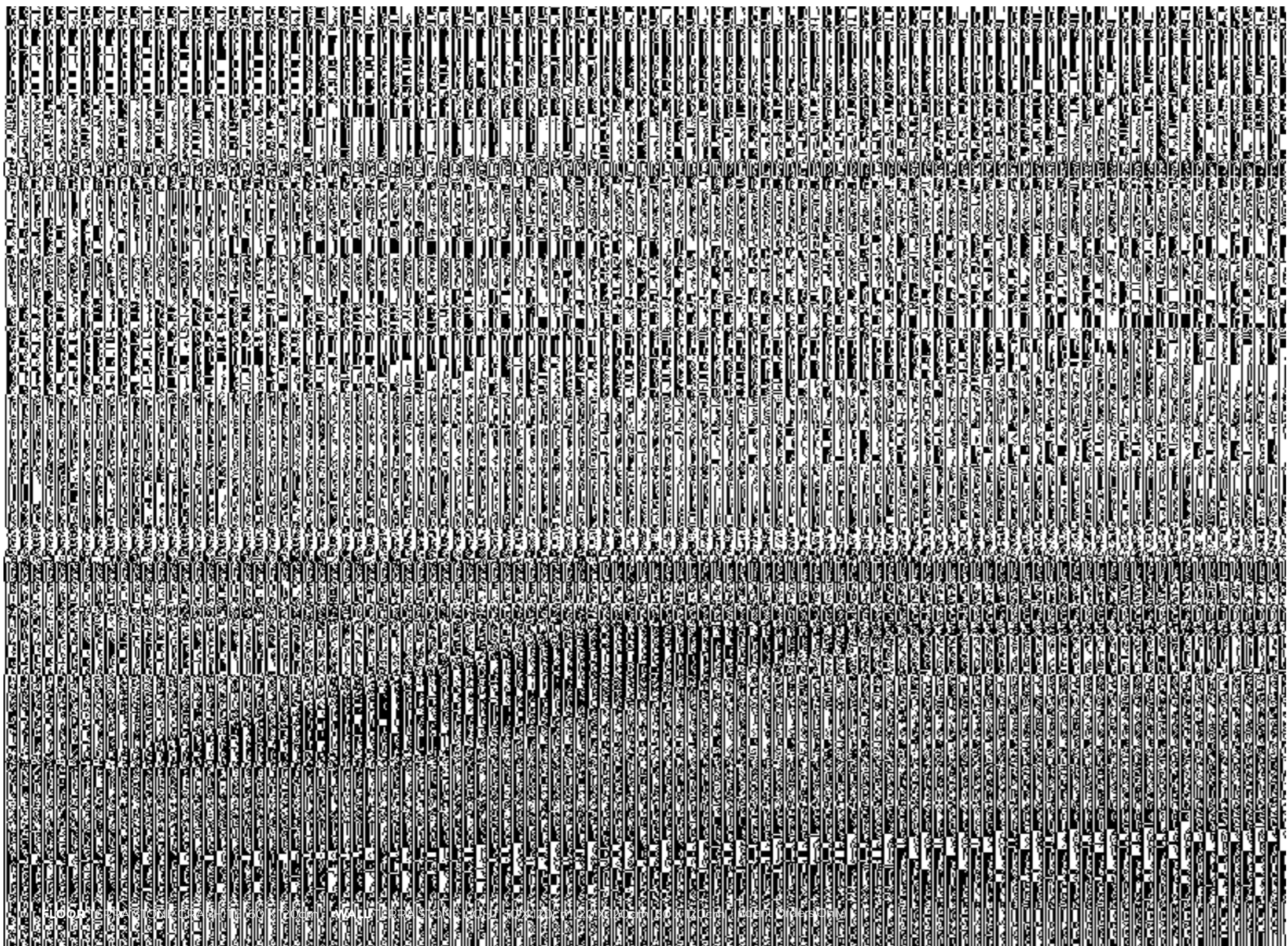


96

NINETY-SIX
RANDOM FACES
30x30cm



Please note: tile patterns are random and may not represent exactly as shown in the photo.



TERRA STONE
IVORY



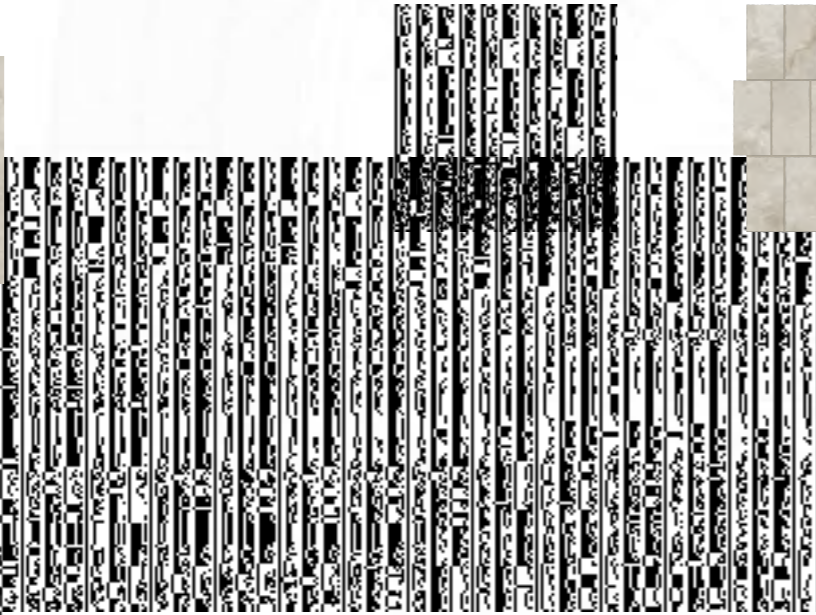
M36142
30 x 60CM ▲

M126142
60 x 120CM ▶

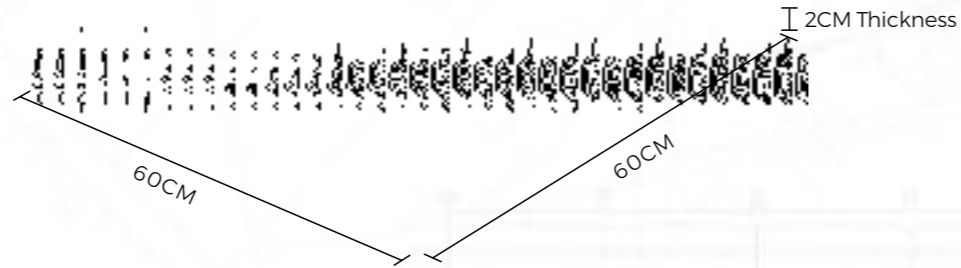
M6142
60 x 60CM ▼

M3142
30 x 30CM ▼

Terra Stone Mosaic
29.8x29.8CM ▼

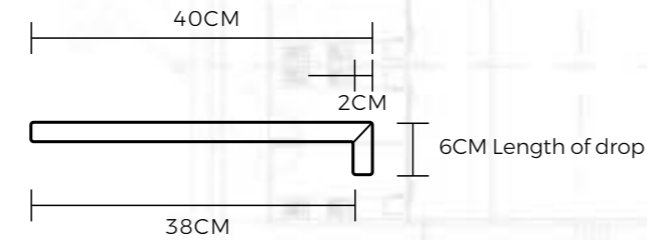
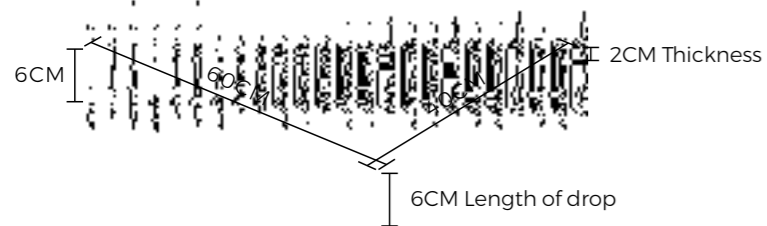


M6142H
60 x 60 x 2CM ▶



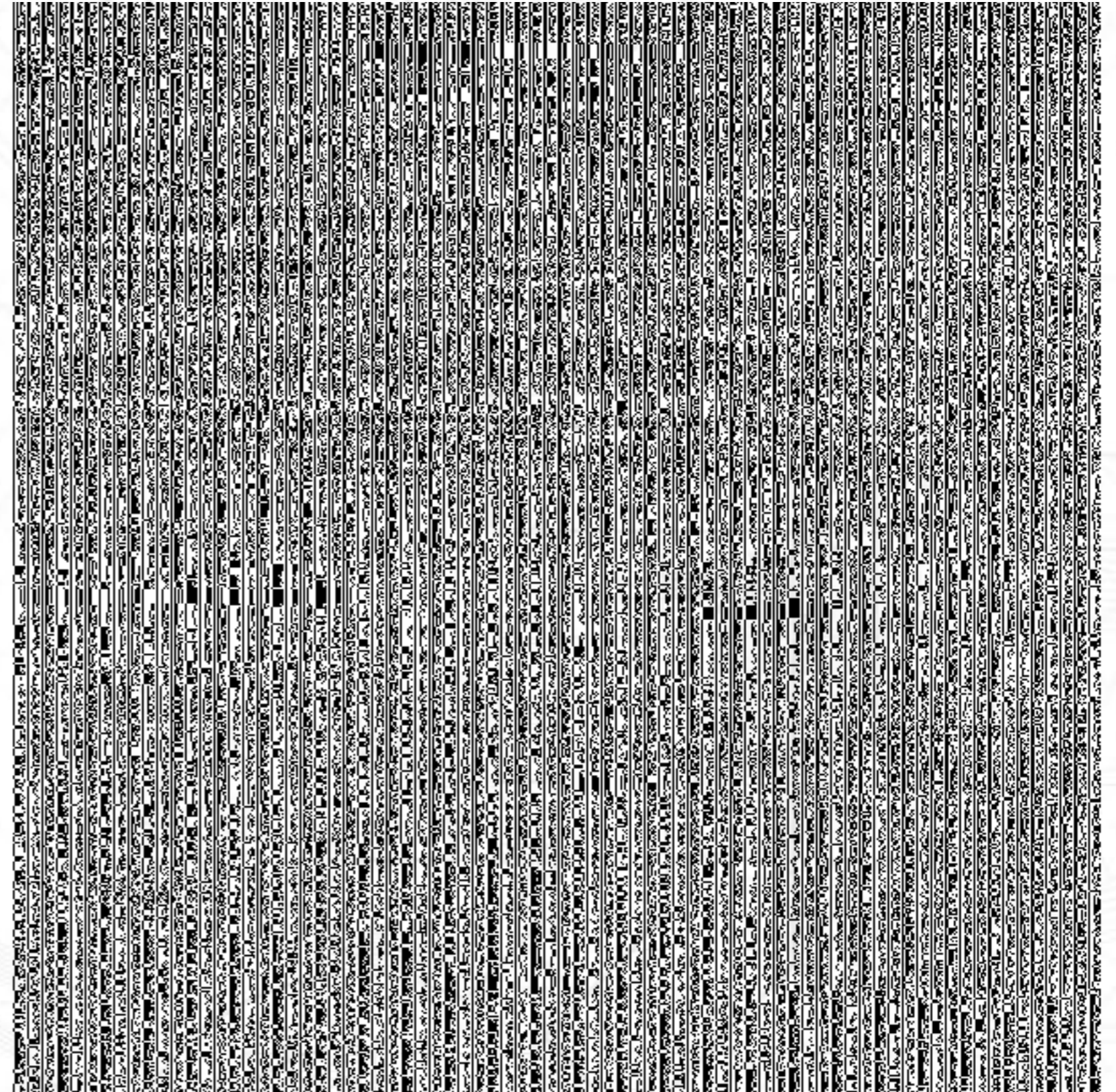
Top Profile - Terra Stone Bullnose Paver

Side Profile - Terra Stone Bullnose Paver



Bullnose Paver
40x60x6CM 2CM

Bullnose Paver 40x60x6CM 2CM





TERRA STONE IVORY

FORMATS

60x120CM
60x60CM
30x60CM
30x30CM

SURFACES

Matt

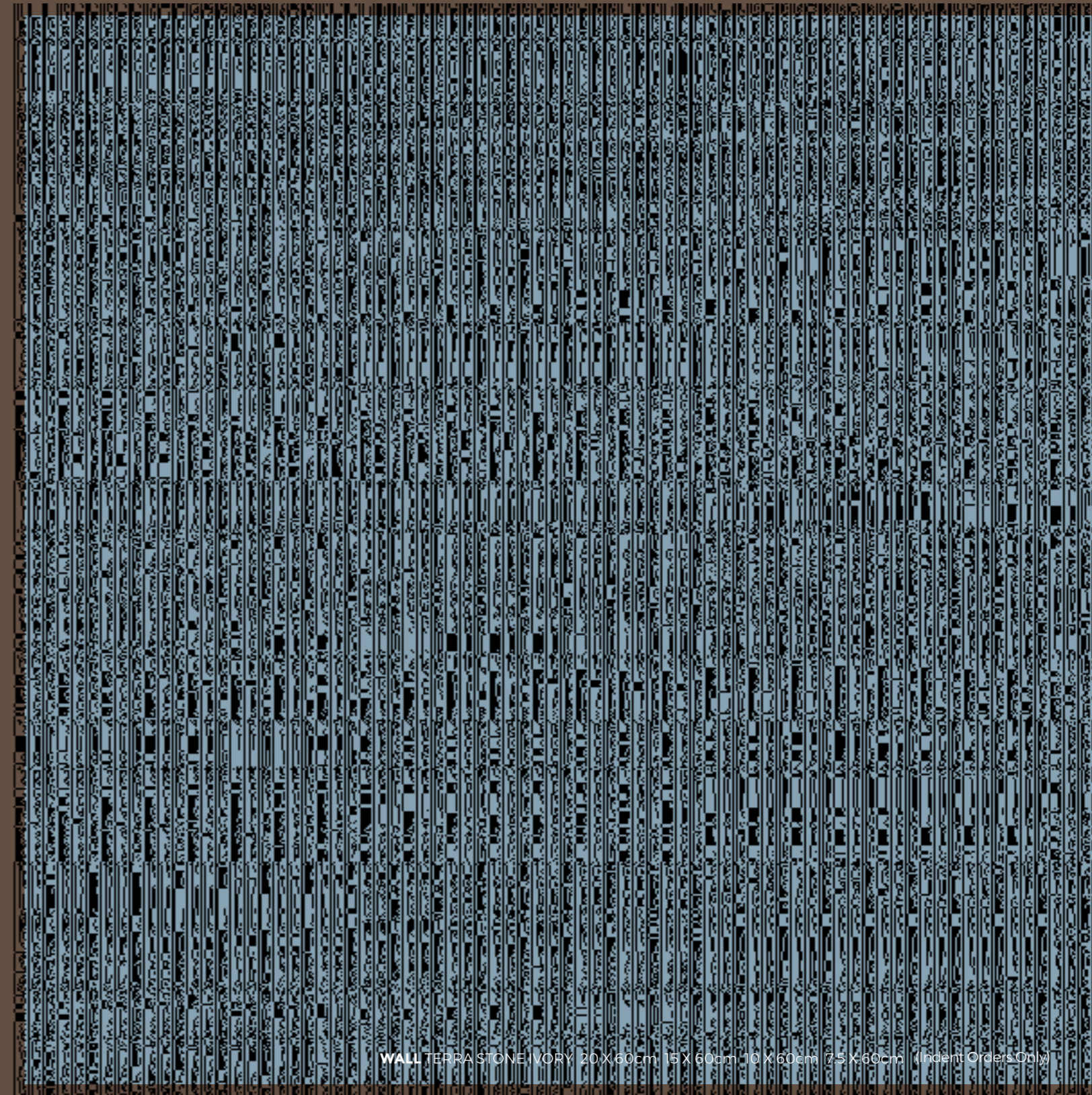
APPLICATIONS

Interior
Exterior
Wall
Floor
Residential



12

TWELVE
RANDOM FACES
60cm x120cm



WALL TERRA STONE IVORY 20 X 60cm 15 X 60cm 10 X 60cm 7.5 X 60cm (Incent Orders Only)

Please note: tile patterns are random and may not represent exactly as shown in the photo.

“

TERRA STONE IVORY

FORMATS

60x120CM
60x60CM
30x60CM
30x30CM

SURFACES

Matt

APPLICATIONS

Interior
Exterior
Wall
Floor
Residential

“

24

TWENTY-FOUR

RANDOM FACES
60x60cm



Please note: tile patterns are random and may not represent exactly as shown in the photo.



Please note: tile patterns are random and may not represent exactly as shown in the photo.



TERRA STONE
IVORY

FORMATS
60x120CM
60x60CM
30x60CM
30x30CM

SURFACES

Matt

APPLICATIONS

Interior
Exterior
Wall
Floor
Residential



48

FORTY-EIGHT
RANDOM FACES
30x60cm



TERRA STONE
IVORY

FORMATS
60x120CM
60x60CM
30x60CM
30x30CM

SURFACES

Matt

APPLICATIONS

Interior
Exterior
Wall
Floor
Residential

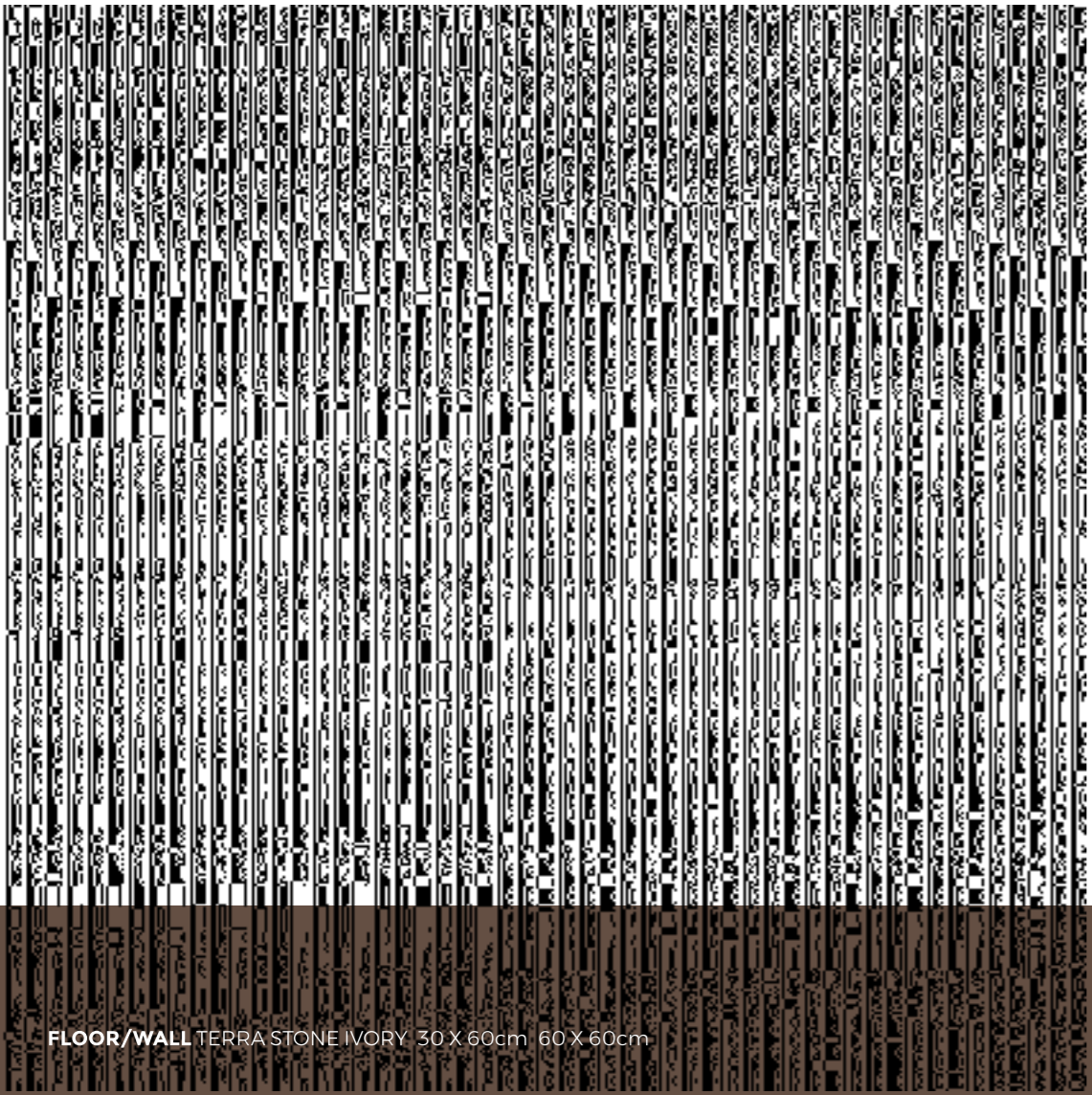


96

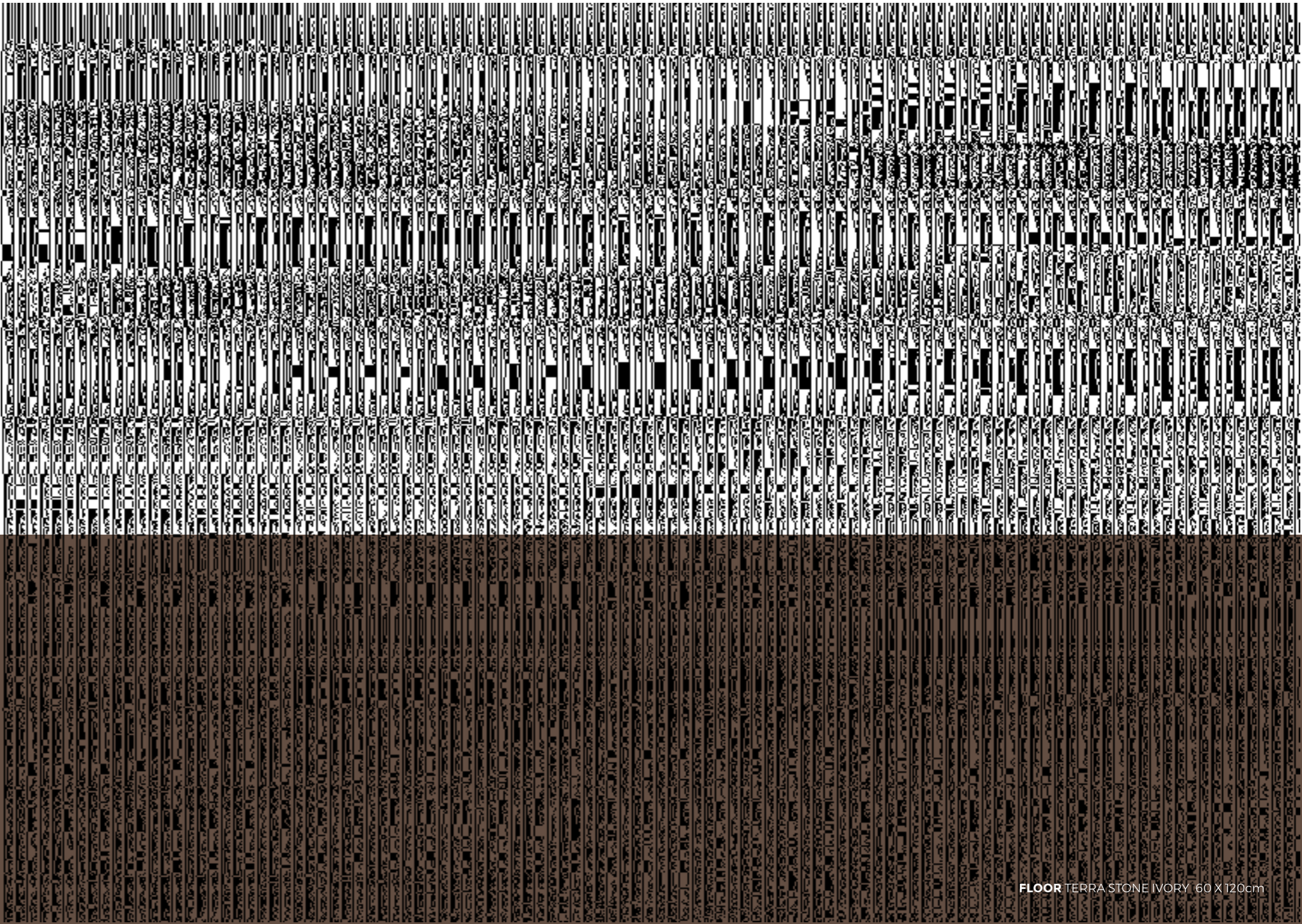
NINETY-SIX
RANDOM FACES
30x30cm



Please note: tile patterns are random and may not represent exactly as shown in the photo.



FLOOR/WALL TERRA STONE IVORY 30X60cm 60 X 60cm

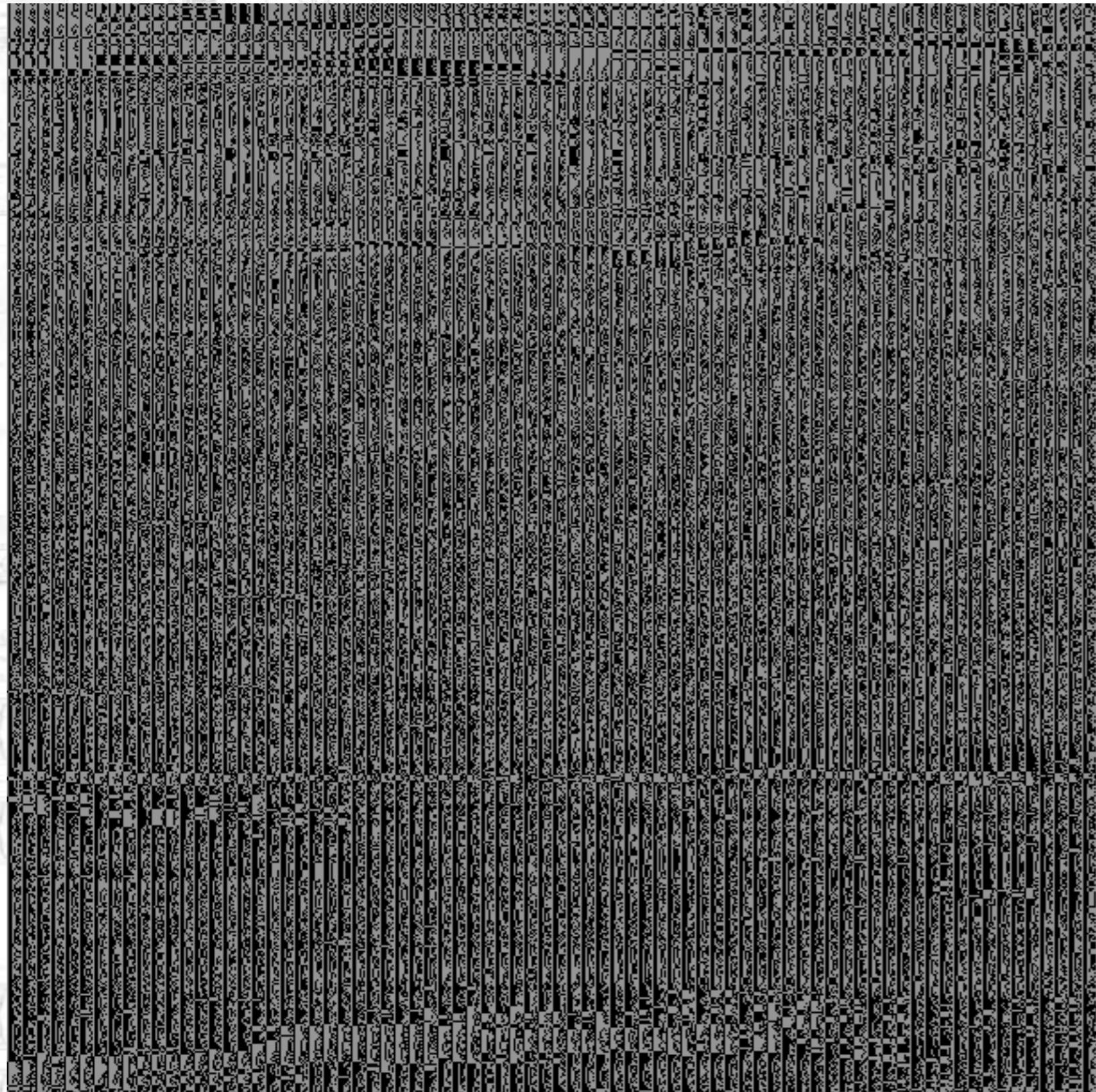


FLOOR TERRA STONE IVORY 60 X 120cm



TERRA STONE **IVORY**

Residue derived from the combustion of organic substances with different neutral colours.



66 TERRA STONE
CINDER



M3143
30 x 30CM ▲



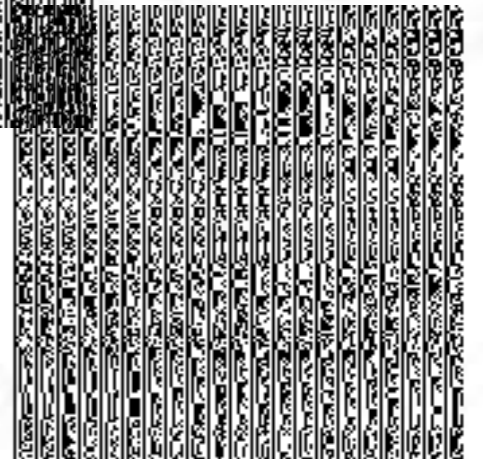
Terra Stone Mosaic
29.8x29.8CM ▲



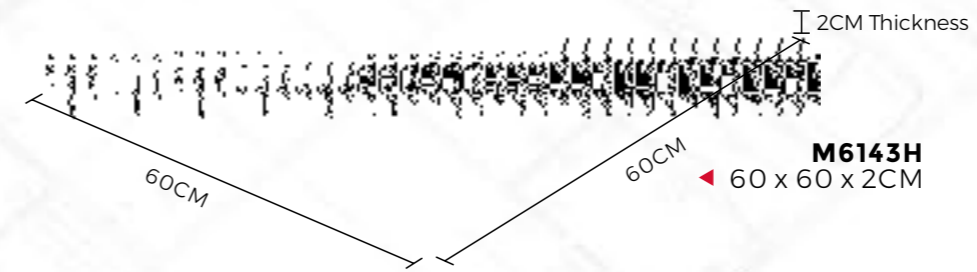
M36143
30 x 60CM ▲



M126143
60 x 120CM ◀

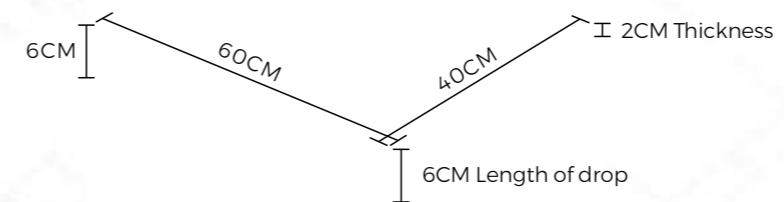


M6143
60 x 60CM ▼

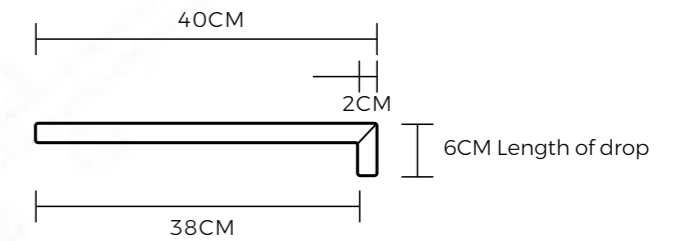


Top Profile - Terra Stone Bullnose Paver

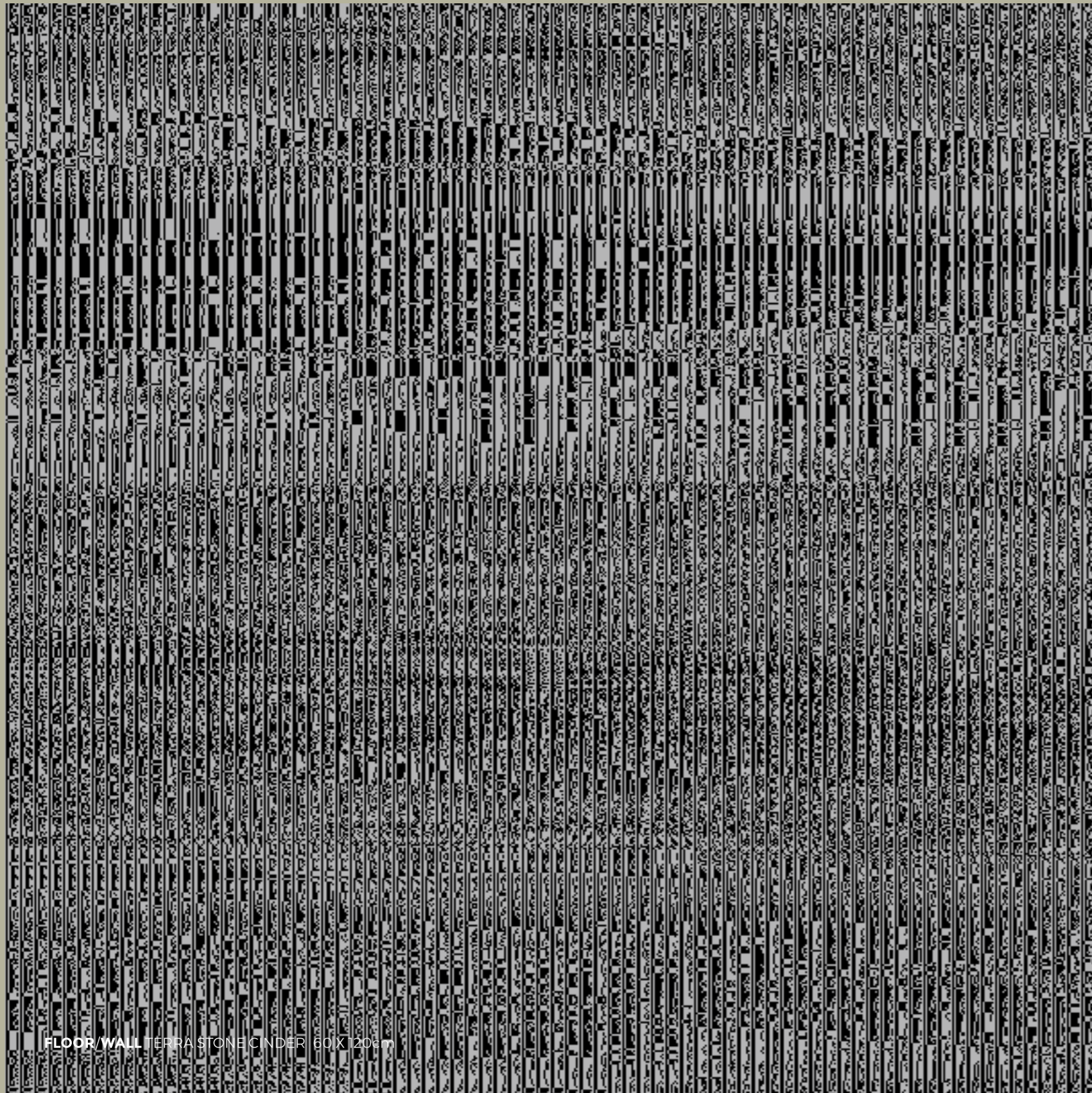
Side Profile - Terra Stone Bullnose Paver



Bullnose Paver
40x60x6CM 2CM



Bullnose Paver 40x60x6CM 2CM



FLOOR/WALL TERRA STONE CINDER BOX 206

“

TERRA STONE CINDER

FORMATS

60x120CM
60x60CM
30x60CM
30x30CM

SURFACES

Matt

APPLICATIONS

Interior
Exterior
Wall
Floor
Residential

“

12

TWELVE

RANDOM FACES
60cm x120cm



Please note: tile patterns are random and may not represent exactly as shown in the photo.



Please note: tile patterns are random and may not represent exactly as shown in the photo.



TERRA STONE CINDER

FORMATS

60x120CM
60x60CM
30x60CM
30x30CM

SURFACES

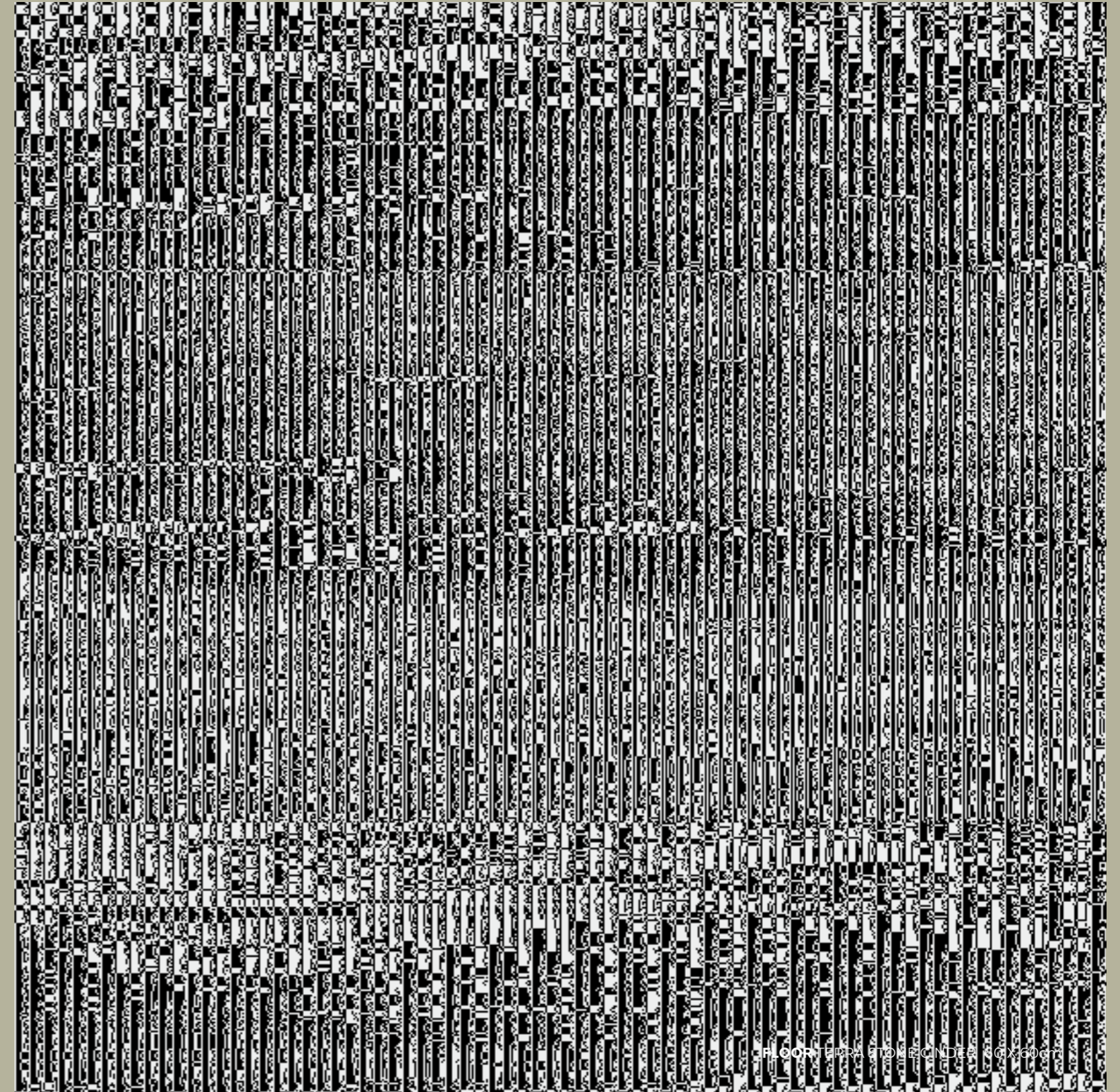
Matt

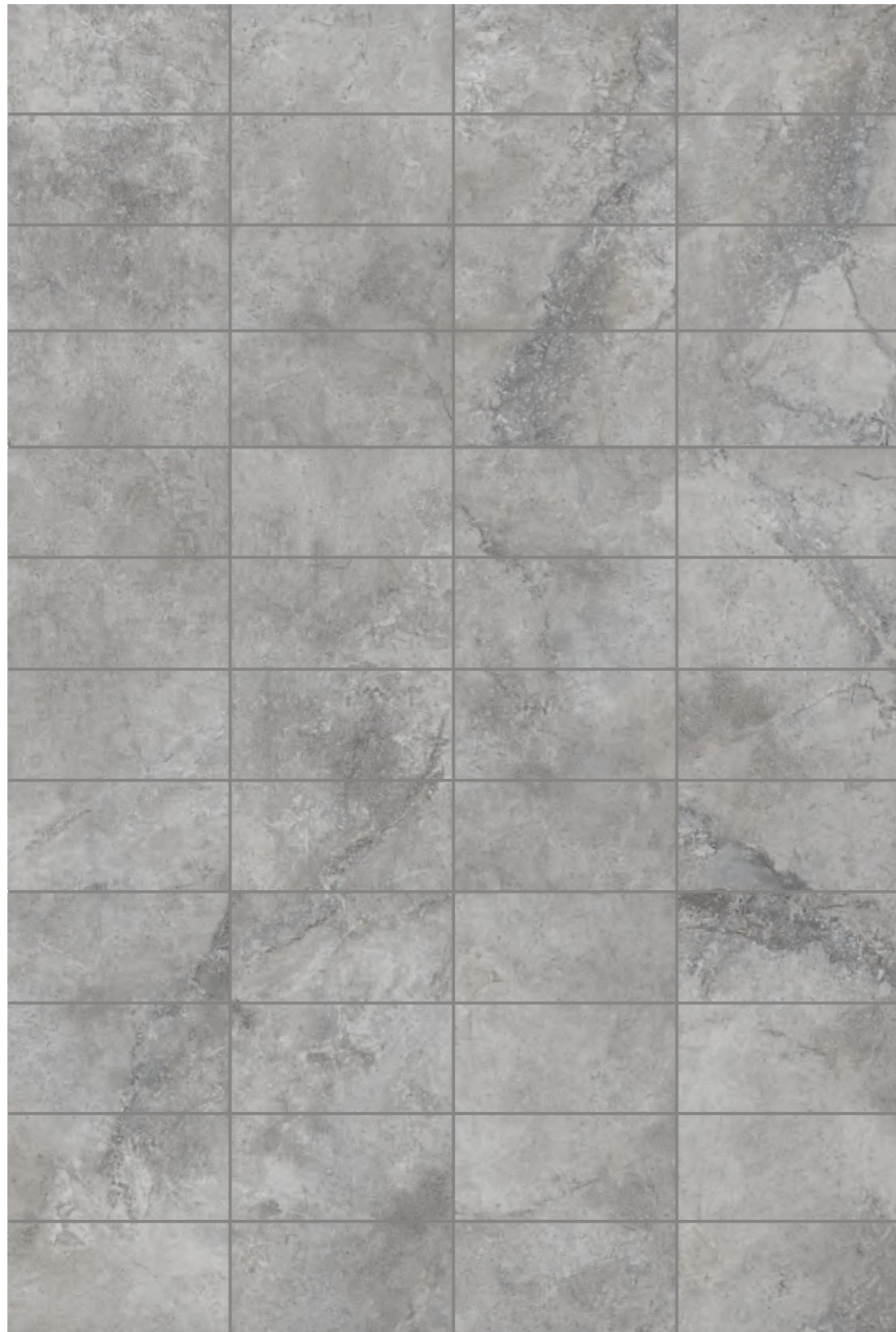
APPLICATIONS

Interior
Exterior
Wall
Floor
Residential



24
TWENTY-FOUR
RANDOM FACES
60x60cm





Please note: tile patterns are random and may not represent exactly as shown in the photo.



TERRA STONE
CINDER

FORMATS

60x120CM
60x60CM
30x60CM
30x30CM

SURFACES

Matt

APPLICATIONS

Interior
Exterior
Wall
Floor
Residential



48

FORTY-EIGHT
RANDOM FACES
30x60cm



TERRA STONE
CINDER

FORMATS

60x120CM
60x60CM
30x60CM
30x30CM

SURFACES

Matt

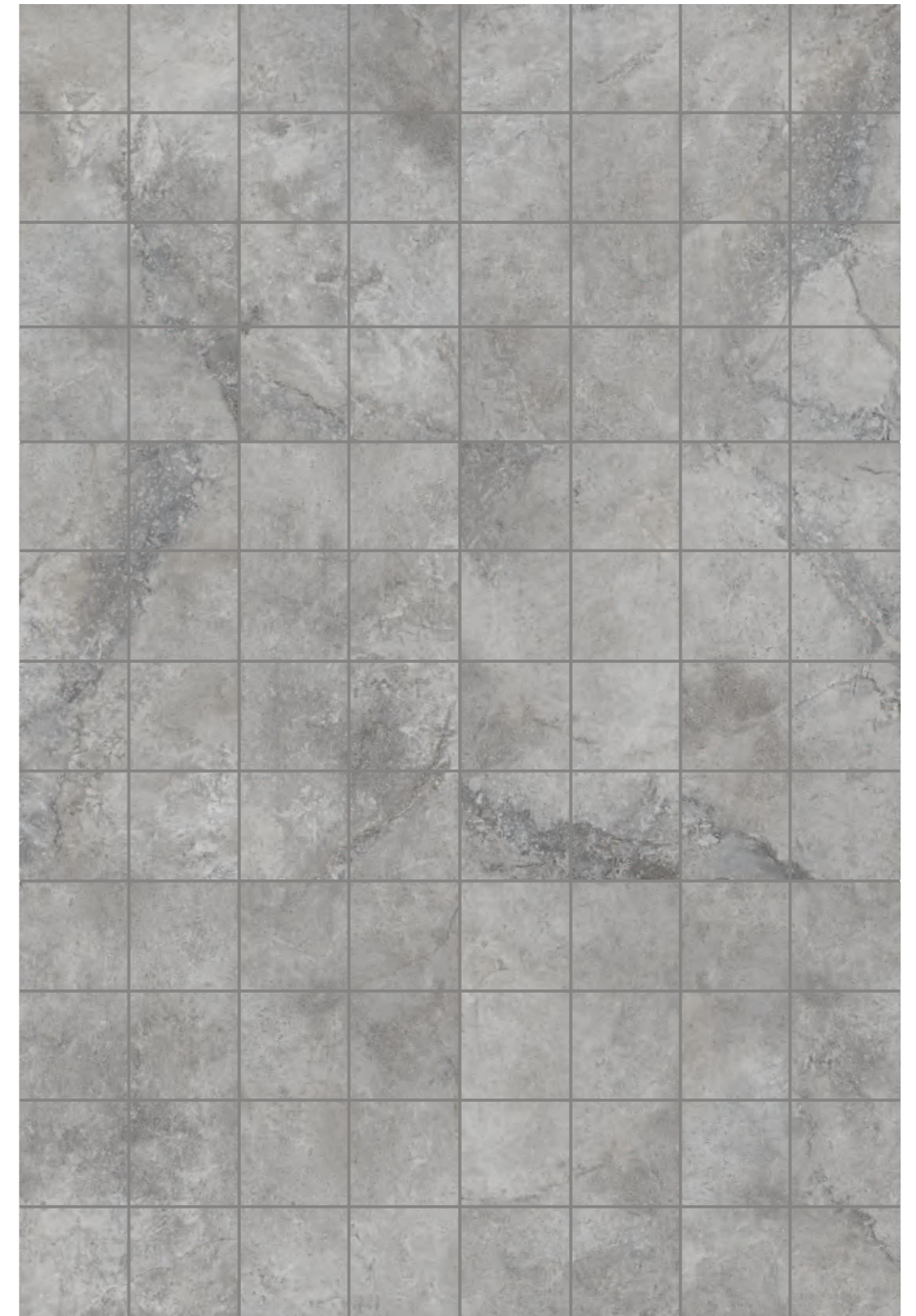
APPLICATIONS

Interior
Exterior
Wall
Floor
Residential



96

NINETY-SIX
RANDOM FACES
30x30cm

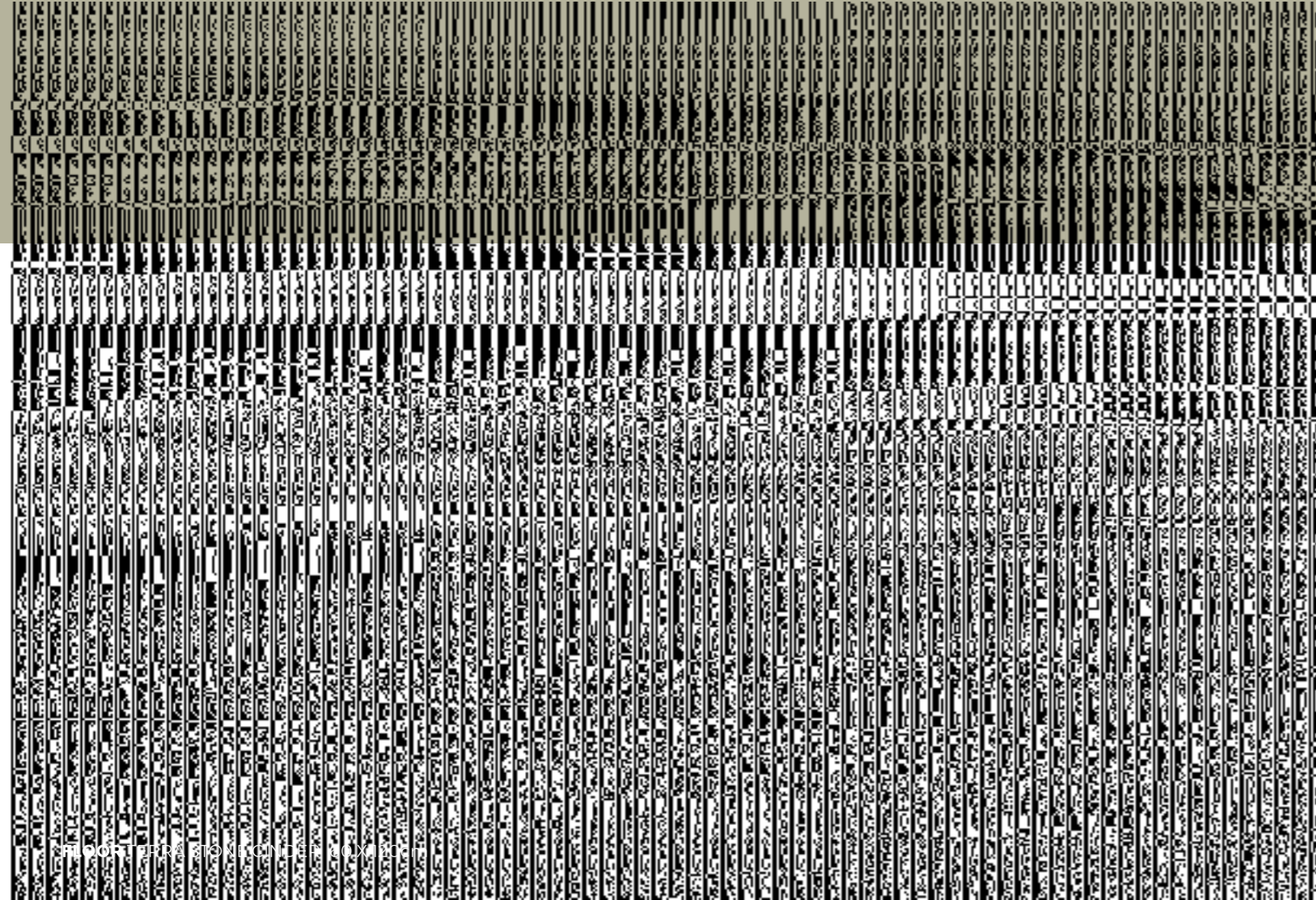


Please note: tile patterns are random and may not represent exactly as shown in the photo.

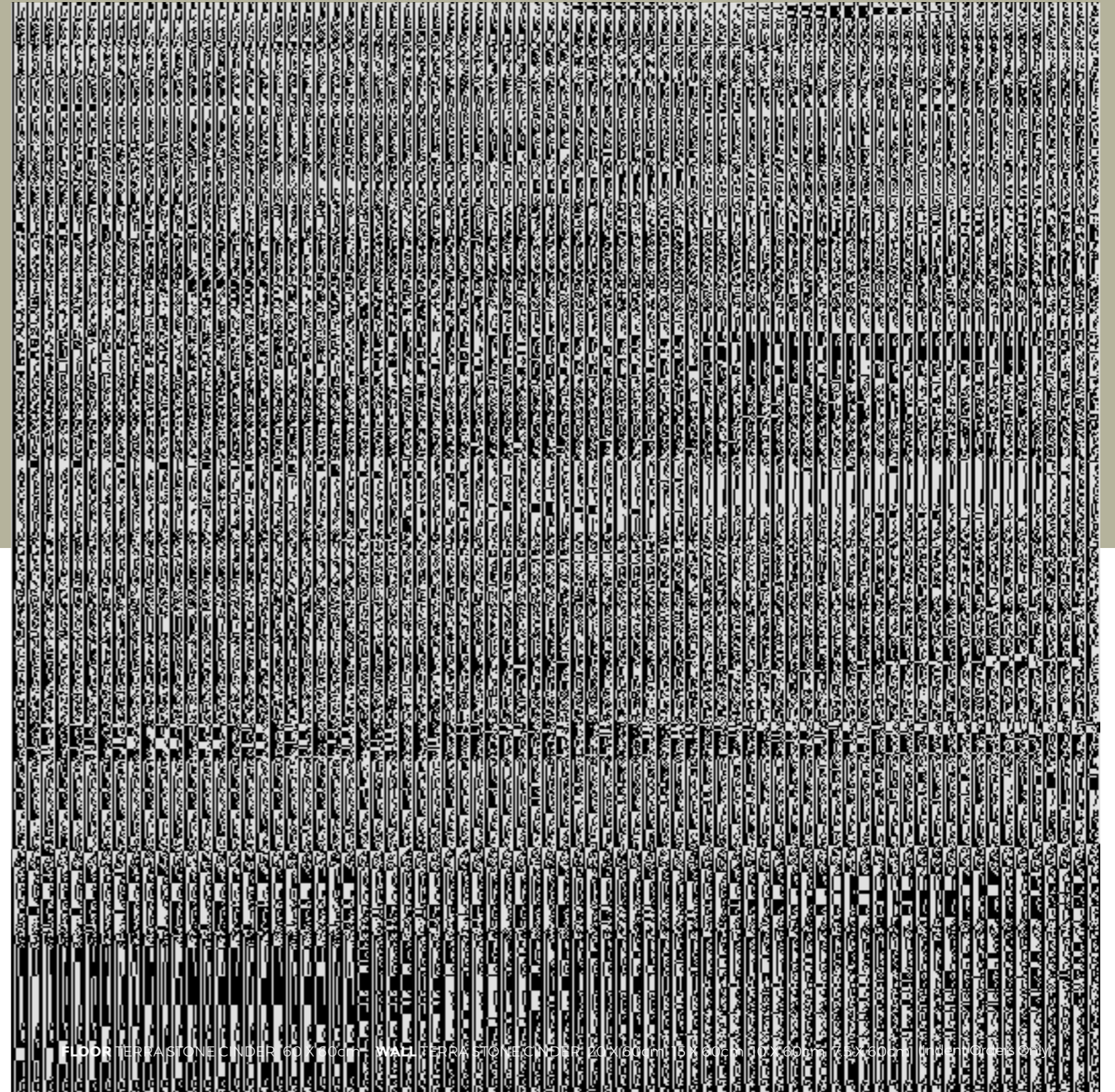


TERRA STONE
CINDER

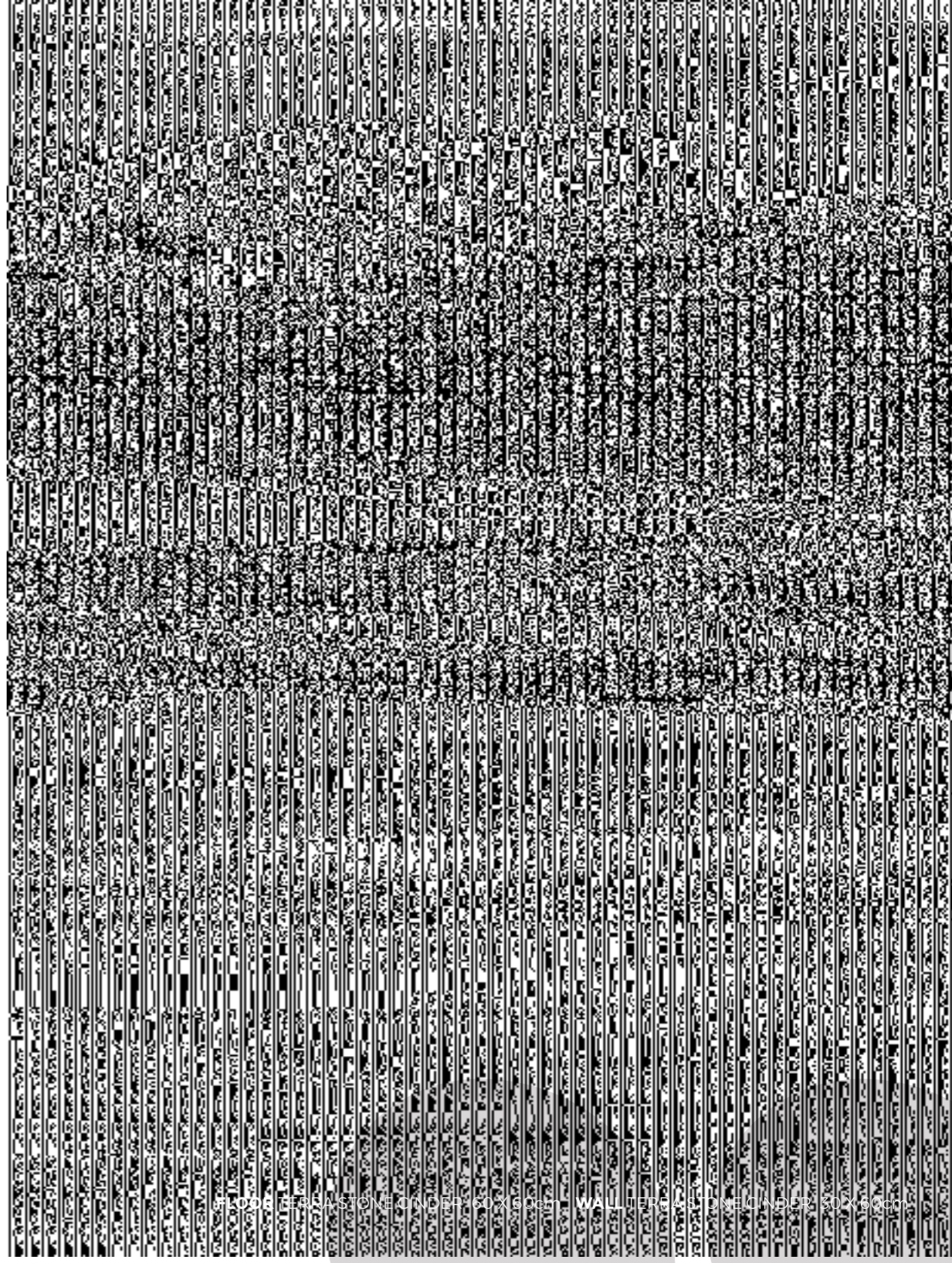
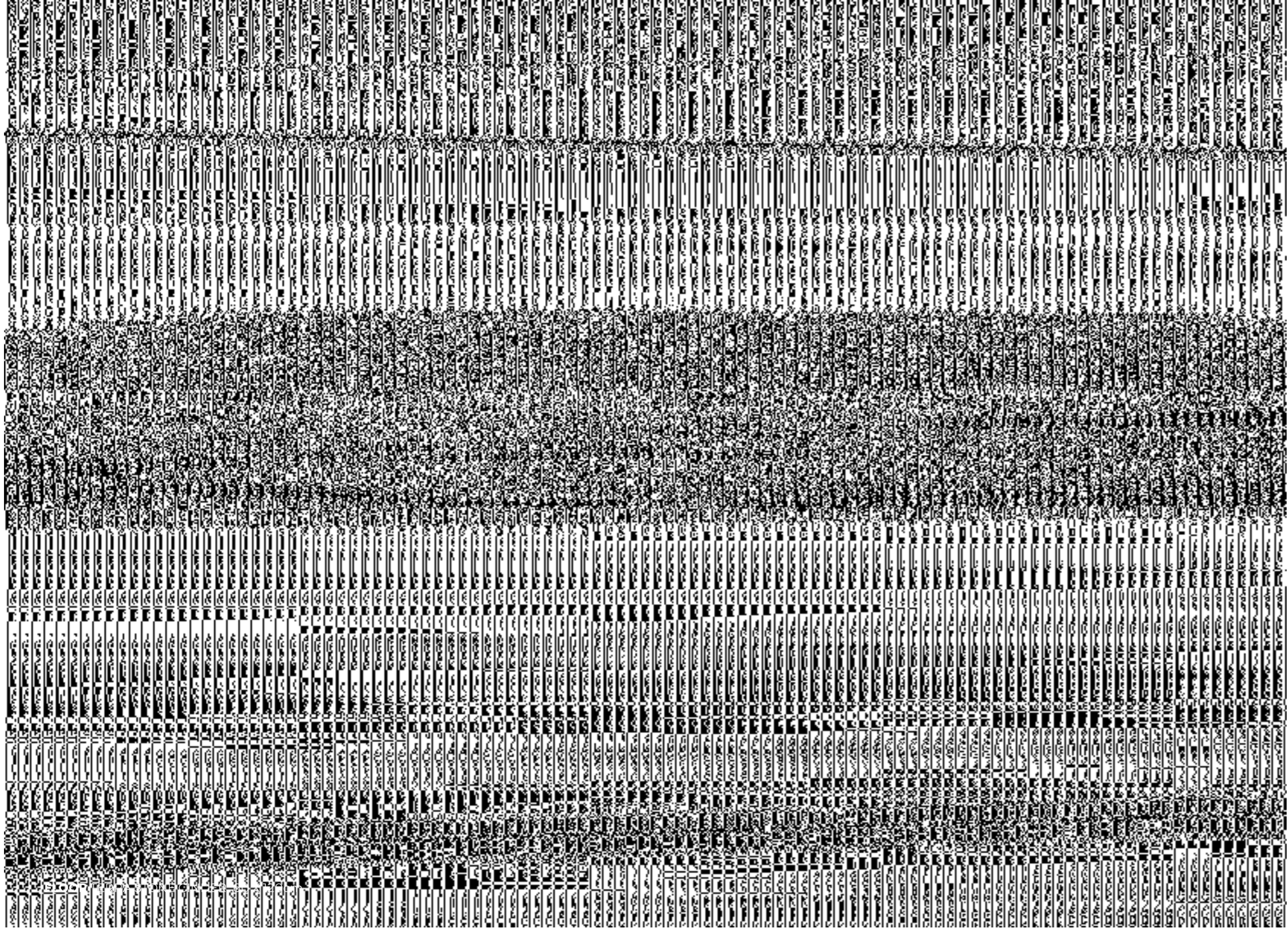
Sedimentary rock made up of minute fragments of mineral rock whose colouring is linked to the typical elements of an area.



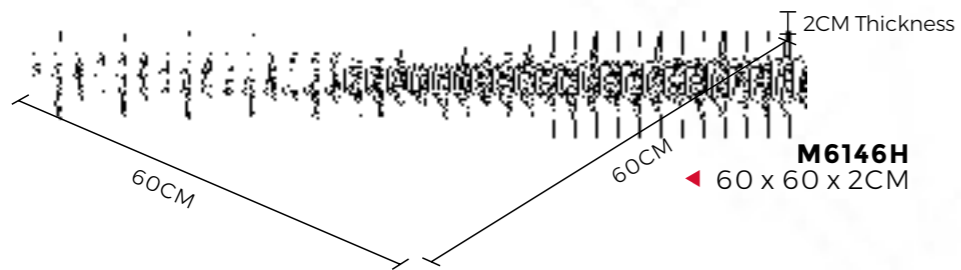
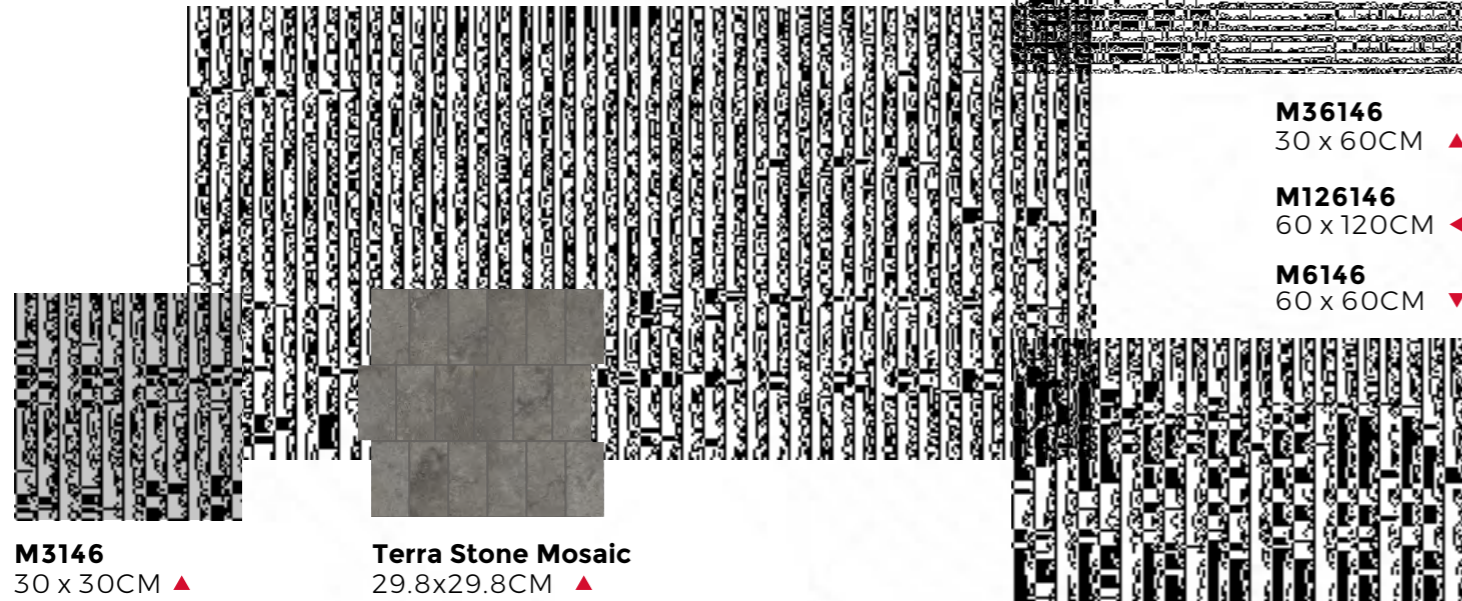
FLOOR TERRA STONE CINDER 60X60cm



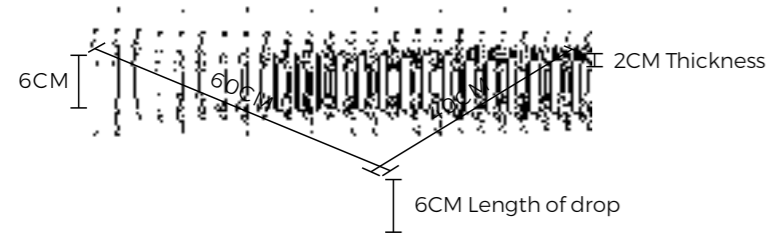
FLOOR TERRA STONE CINDER 60X60cm | WALL TERRA STONE CINDER 20X60cm | 5X60cm | 10X60cm | 25X60cm | 30X60cm | 40X60cm | 50X60cm



“ TERRA STONE
GRAPHITE

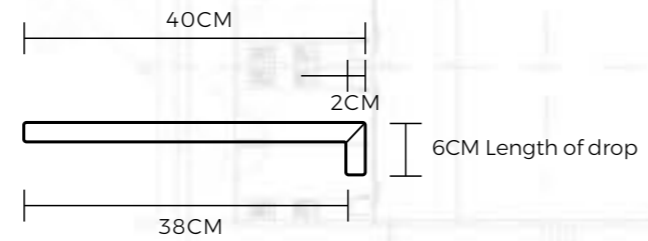


Top Profile – Terra Stone Bullnose Paver

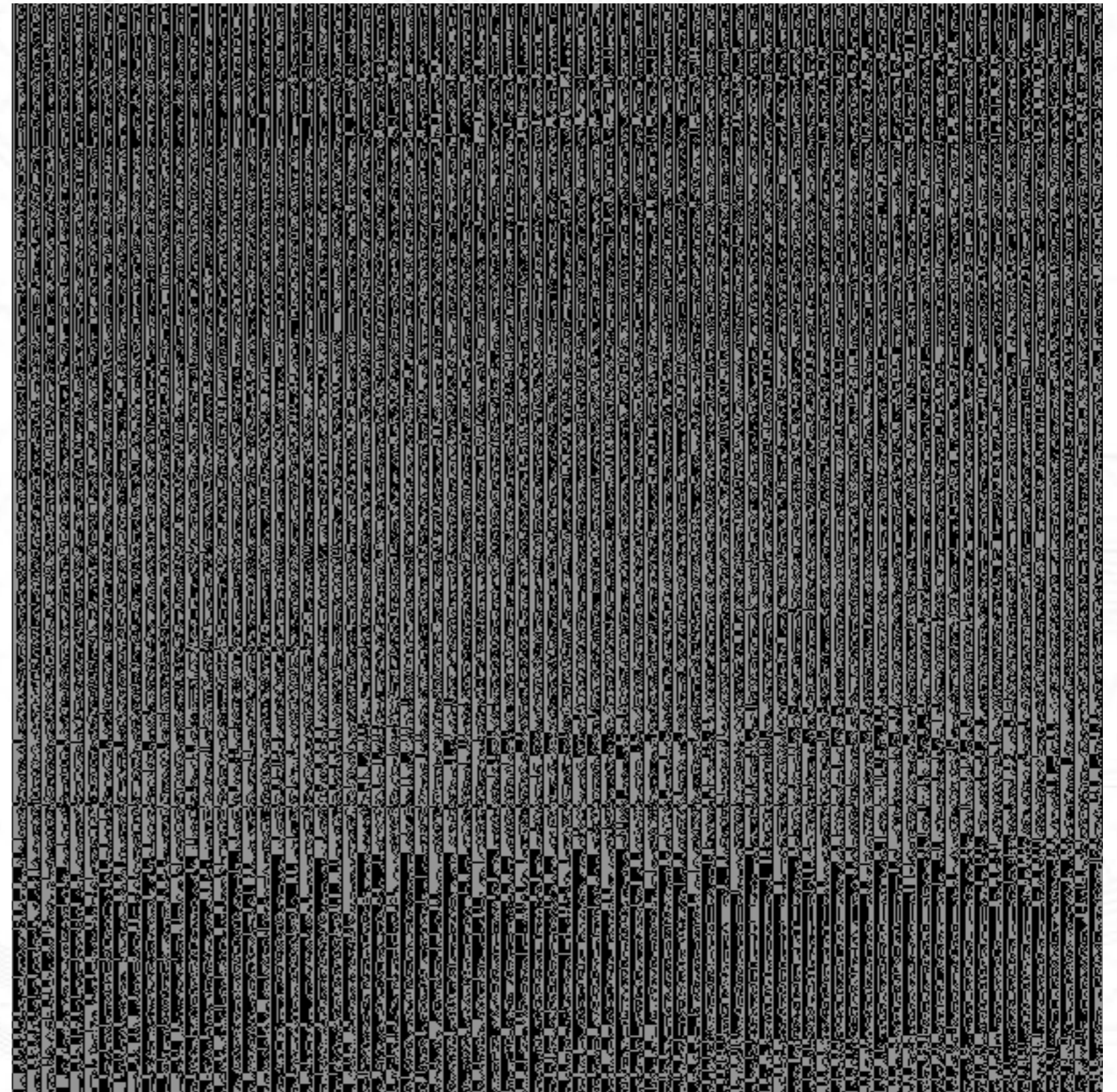


Bullnose Paver
40x60x6CM B 2CM

Side Profile – Terra Stone Bullnose Paver



Bullnose Paver 40x60x6CM 2CM





TERRA STONE GRAPHITE

FORMATS

60x120CM
60x60CM
30x60CM
30x30CM

SURFACES

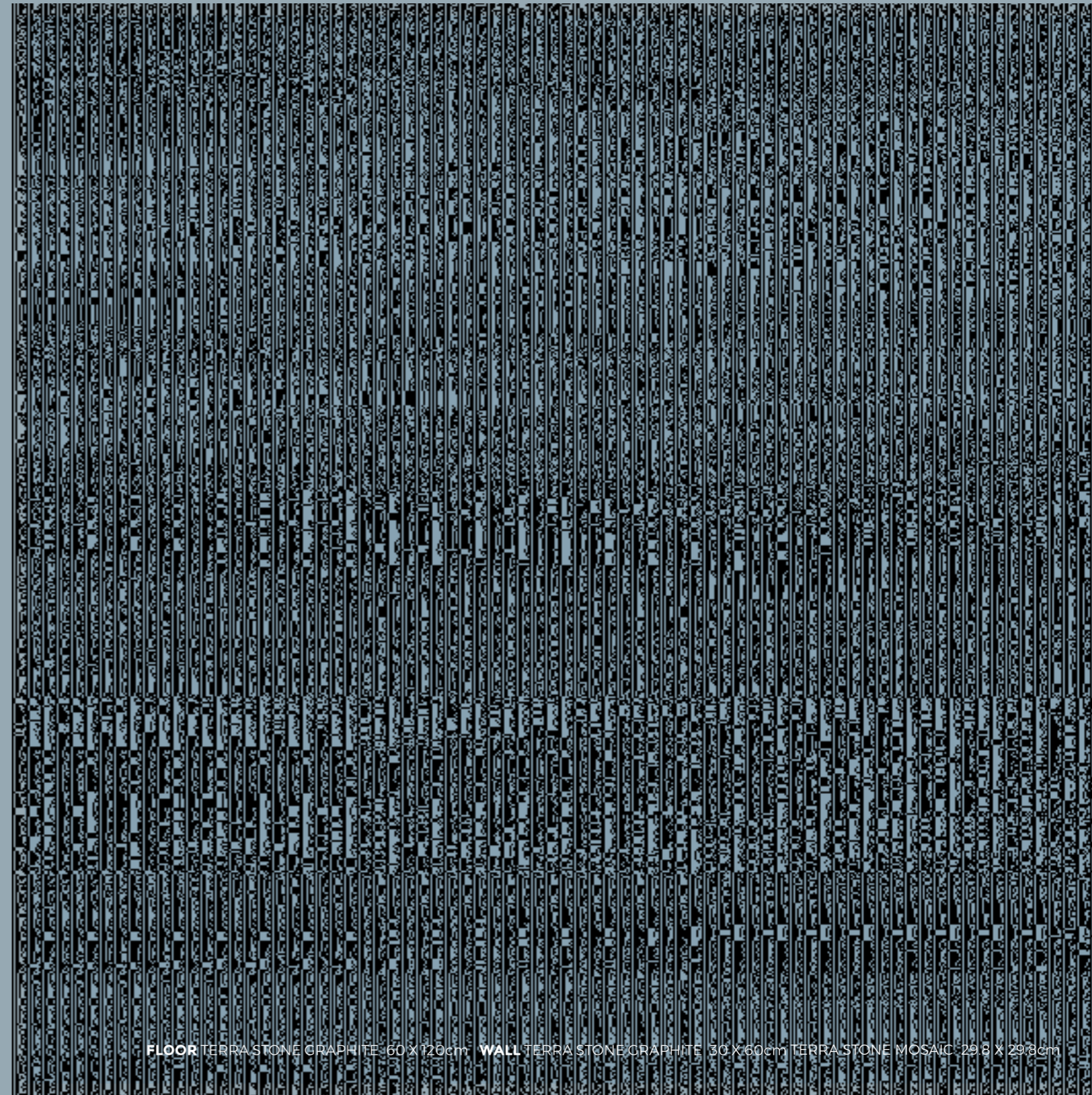
Matt

APPLICATIONS

Interior
Exterior
Wall
Floor
Residential



12
TWELVE
RANDOM FACES
60cm x120cm



FLOOR TERRA STONE GRAPHITE 60 X 120cm WALL TERRA STONE GRAPHITE 30 X 60cm TERRA STONE MOSAIC 29,8 X 29,8cm

Please note: tile patterns are random and may not represent exactly as shown in the photo.



OUTDOOR TERRA STONE GRAPHITE 60 X 60cm Bullnose Paver 40 X 60 X 6cm 2cm



TERRA STONE
GRAPHITE

FORMATS

60x120CM
60x60CM
30x60CM
30x30CM

SURFACES

Matt

APPLICATIONS

Interior
Exterior
Wall
Floor
Residential

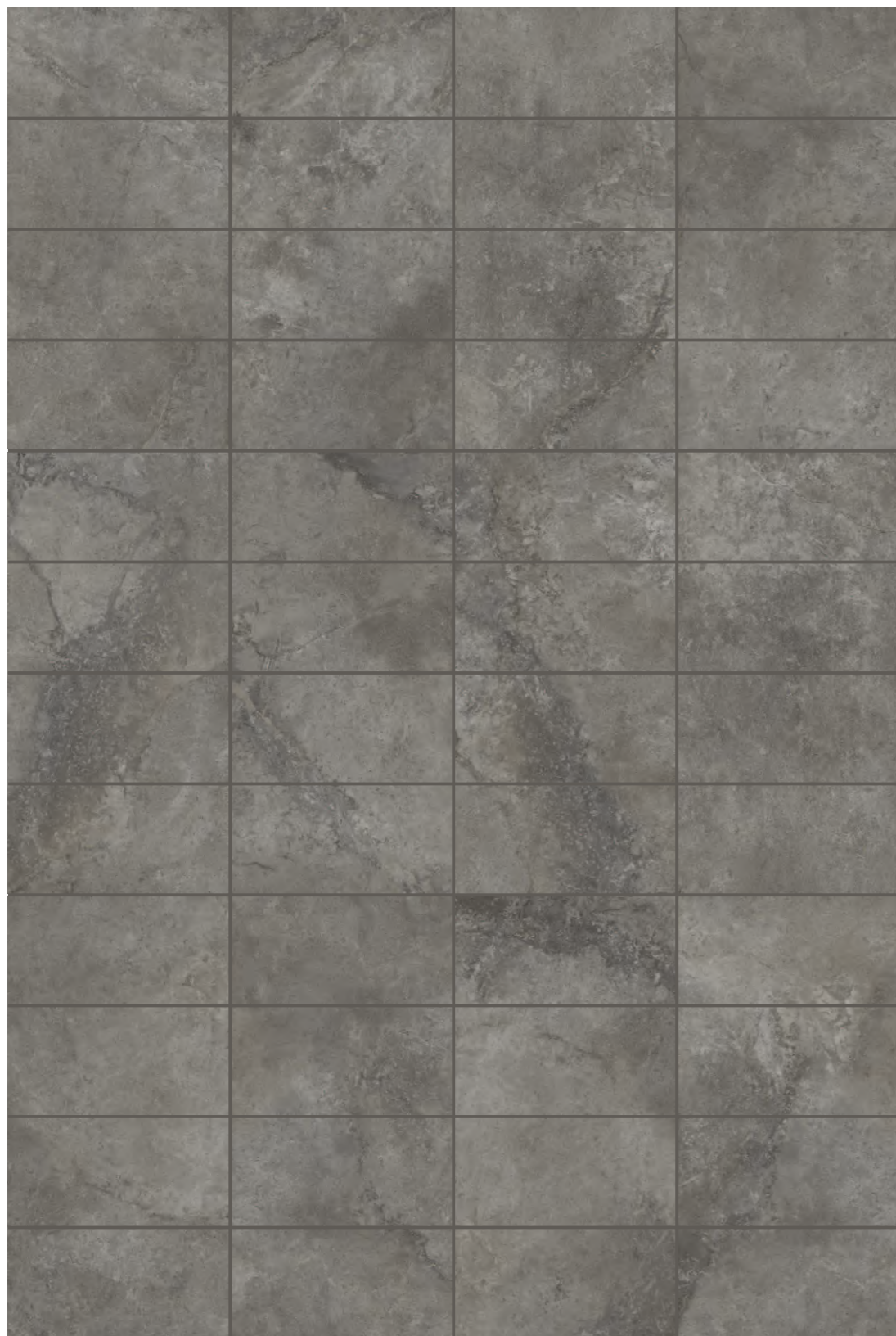


24

TWENTY-FOUR
RANDOM FACES
60x60cm



Please note: tile patterns are random and may not represent exactly as shown in the photo.



Please note: tile patterns are random and may not represent exactly as shown in the photo.



TERRA STONE
GRAPHITE

FORMATS

60x120CM
60x60CM
30x60CM
30x30CM

SURFACES

Matt

APPLICATIONS

Interior
Exterior
Wall
Floor
Residential



48

FORTY-EIGHT
RANDOM FACES
30x60cm



TERRA STONE
GRAPHITE

FORMATS

60x120CM
60x60CM
30x60CM
30x30CM

SURFACES

Matt

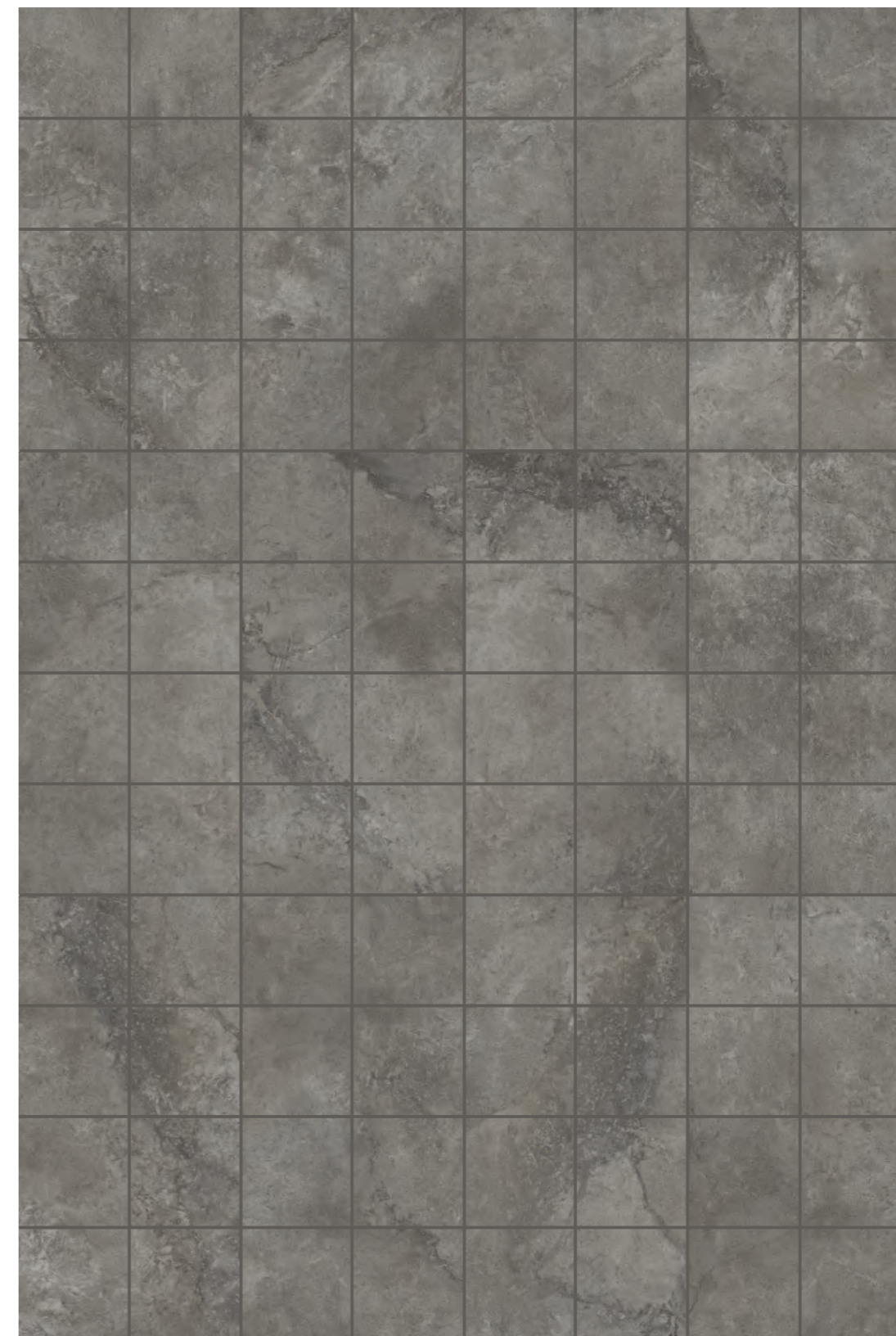
APPLICATIONS

Interior
Exterior
Wall
Floor
Residential



96

NINETY-SIX
RANDOM FACES
30x30cm



Please note: tile patterns are random and may not represent exactly as shown in the photo.

1. The first part of the document discusses the importance of maintaining accurate records of all transactions and activities. It emphasizes that proper record-keeping is essential for transparency and accountability, particularly in the context of public administration and government operations. The text highlights how detailed records can help identify inefficiencies, prevent fraud, and ensure that resources are used effectively.

2. The second part of the document focuses on the role of technology in modern record-keeping. It explores how digital systems and software solutions can streamline the process of data collection, storage, and retrieval. The author notes that while technology offers significant advantages, it also presents challenges such as data security, system integration, and the need for staff training. The text suggests that a balanced approach, combining traditional methods with modern technology, is often the most effective solution.

3. The third part of the document addresses the legal and regulatory requirements surrounding record-keeping. It discusses various laws and standards that govern how records must be maintained, including issues related to data privacy, retention periods, and access controls. The text provides a comprehensive overview of these requirements, helping organizations understand their obligations and avoid potential legal pitfalls.

4. The fourth part of the document discusses the importance of regular audits and reviews of record-keeping systems. It explains that periodic audits can help ensure that records are accurate, complete, and up-to-date. The text also covers the process of conducting an audit, from planning and data collection to reporting and corrective actions. The author stresses that audits are not just a compliance exercise but a valuable tool for continuous improvement.

5. The fifth and final part of the document provides practical advice and best practices for implementing a robust record-keeping system. It covers topics such as developing clear policies and procedures, selecting the right technology, and ensuring that all staff are properly trained. The text concludes by emphasizing that successful record-keeping is a continuous process that requires ongoing attention and commitment from all levels of the organization.

6. The first part of this section discusses the importance of maintaining accurate records of all transactions and activities. It emphasizes that proper record-keeping is essential for transparency and accountability, particularly in the context of public administration and government operations. The text highlights how detailed records can help identify inefficiencies, prevent fraud, and ensure that resources are used effectively.

7. The second part of this section focuses on the role of technology in modern record-keeping. It explores how digital systems and software solutions can streamline the process of data collection, storage, and retrieval. The author notes that while technology offers significant advantages, it also presents challenges such as data security, system integration, and the need for staff training. The text suggests that a balanced approach, combining traditional methods with modern technology, is often the most effective solution.

8. The third part of this section addresses the legal and regulatory requirements surrounding record-keeping. It discusses various laws and standards that govern how records must be maintained, including issues related to data privacy, retention periods, and access controls. The text provides a comprehensive overview of these requirements, helping organizations understand their obligations and avoid potential legal pitfalls.

9. The fourth part of this section discusses the importance of regular audits and reviews of record-keeping systems. It explains that periodic audits can help ensure that records are accurate, complete, and up-to-date. The text also covers the process of conducting an audit, from planning and data collection to reporting and corrective actions. The author stresses that audits are not just a compliance exercise but a valuable tool for continuous improvement.

10. The fifth and final part of this section provides practical advice and best practices for implementing a robust record-keeping system. It covers topics such as developing clear policies and procedures, selecting the right technology, and ensuring that all staff are properly trained. The text concludes by emphasizing that successful record-keeping is a continuous process that requires ongoing attention and commitment from all levels of the organization.

TECHNICAL SPECIFICATIONS

TECHNICAL CHARACTERISTIC	STANDARD TEST METHOD	PRESCRIBED VALUES	MANUFACTURER VALUES
MEASUREMENT & SURFACE APPEARANCE			
LENGTH	EN ISO 10545-2	±0.6%	±0.1%
WIDTH	EN ISO 10545-2	±0.6%	±0.1%
THICKNESS	EN ISO 10545-2	±5%	±3%
TRANSMUTATION	EN ISO 10545-2	±0.5%	±0.2%
PHYSICAL PROPERTIES			
WATER ABSORPTION	EN ISO 10545-3	≤0.5%	≤0.5%
BREAKING STRENGTH	EN ISO 10545-4	≥1300N	≥1300N
MODULUS OF RUPTURE	EN ISO 10545-4	≥35N/mm ²	≥35N/mm ²
RESISTANCE TO ABRASION	EN ISO 10545-7	≤205mm ³	≤160mm ³
THERMAL EXPANSION COEFFICIENT	EN ISO 10545-8	≤9MK-1	≤7MK-1
TEMPERATURE SHOCK RESISTANCE	EN ISO 10545-9	NO VISIBLE EFFECT	DURABLE
FROST RESISTANCE	EN ISO 10545-12	NO VISIBLE EFFECT	ANTI-ICE
SLIP RESISTANCE, WET PENDULUM TEST METHOD, SLIDER 96	AS 4586-2013/AMDT1-2017 APPENDIX A	N/A	P4
CHEMICAL PROPERTIES			
RESISTANCE TO CHEMICALS <small>RESISTANCE TO HOUSEHOLD CHEMICALS AND SWIMMING POOL SALTS</small>	EN ISO 10545-13	MINIMUM GB	PASS
RESISTANCE TO STAINING	EN ISO 10545-14 <small>when subjected to chemicals</small>	MINIMUM CLASS 3	PASS

PACKING SPECIFICATIONS

SERIES	SIZES	PCS / CTN	M ² / CTN	M ² / PLT	CTN / PLT	KG / PLT
TERRA STONE	60x120CM	2	1.44	86.4	60	2070
	60x60CM	4	1.44	57.6	40	1240
	30x60CM	8	1.44	57.6	40	1240
	30x30CM	11	0.99	55.44	56	1232
	40x60x6CM	2	0.48	17.28	36	1000
	60x60x2CM	2	0.72	28.8	40	1360
	29.8x29.8CM MOSAIC	11	0.99	51.48	52	1144



There is no denying the grandeur of stone. Be inspired by our collection of stone designs, exclusively created to bring elegance and beauty to your home.



