

ORNAMENT  
MARBLE  
CEMENT  
**STONE**  
WOOD  
OPUS

■  
CAPRI



ORNAMENT  
MARBLE  
CEMENT  
**STONE**  
WOOD  
OPUS  
■  
CAPRI



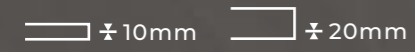
Harmonious, meticulously detailed surfaces with impressive technical and aesthetic properties: we design floor and wall coverings, not tiles.

## **CAPRI**

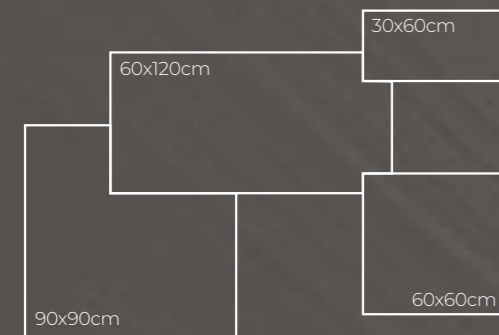
CAPRI came to life after a long search and after many attempts to mix three stones of different nature. In the end we managed to find the right mix: the Italian Collemantina marble, the French Imperiale marble and the slate from the Trentino-Alto-Adige Alps.



## THICKNESS 2



## FORMATS 4



The company's mastery of production processes and extensive research and development take its products beyond all expectations, towards an aesthetic ideal that is always up-to-date, realized in collections that defy fashion, synonymous with beauty that continues to express itself over time.

## COLOURS 5



GLACIER



SALT



NUTMEG



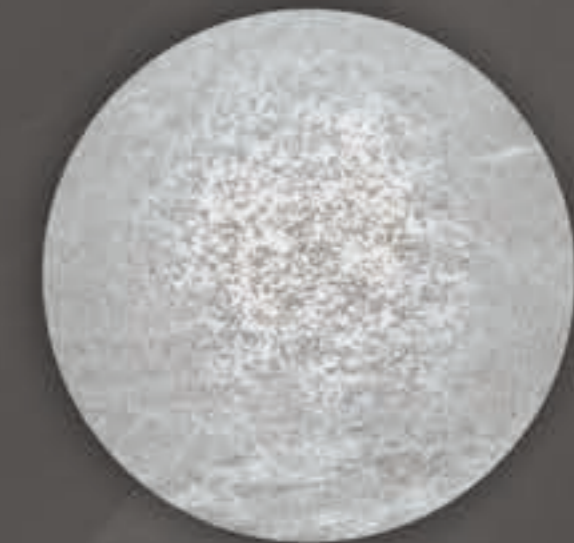
EARL GREY



PEPPER

## SURFACES 4

IN & OUT – SURFACETEC  
Matt (90 x 90CM)  
Lappato  
Pavers grip



# CAPRI GLACIER



▲ 30 x 60CM

◀ 60 x 120CM

▼ 60 x 60CM

▲ 90 x 90CM



**TUMBLLED EDGE MOSAIC**  
29.8 x 32.7CM



**TUMBLLED EDGE SUBWAY**  
10 x 20CM



**2CM PAVER**  
▲ 60 x 60CM  
■ 2CM



**Pencil Edge Bullnose**  
▲ 40 x 60CM  
■ 2CM





WALL: TUMBLED EDGE SUBWAY 10x20CM



FLOOR: GLACIER 30x60CM 60x60CM



WALL: GLACIER 20x120CM 60x120CM FLOOR: GLACIER 60x120CM



FLOOR: GLACIER 90x90CM

# CAPRI SALT



▲ 30 x 60CM

◀ 60 x 120CM

▼ 60 x 60CM

▲ 90 x 90CM



**TUMBLD EDGE MOSAIC**  
29.8 x 32.7CM



**TUMBLD EDGE SUBWAY**  
10 x 20CM



**2CM PAVER**  
▲ 60 x 60CM  
■ 2CM



**Pencil Edge Bullnose**  
▲ 40 x 60CM  
■ 2CM





FLOOR: SALT 60x60CM



FLOOR: SALT 60x120CM





WALL: TUMBLED EDGE MOSAIC 29.8x32.7CM FLOOR: SALT 90x90CM

# CAPRI SALT



WALL: TUMBLED EDGE SUBWAY 10x20CM



# CAPRI NUTMEG



- ▲ 30 x 60CM
- ◄ 60 x 120CM
- ▼ 60 x 60CM

▲ 90 x 90CM



**TUMBLED EDGE MOSAIC**  
29.8 x 32.7CM



**TUMBLED EDGE SUBWAY**  
10 x 20CM



**2CM PAVER**  
▲ 60 x 60CM  
■ 2CM

**Pencil Edge Bullnose**  
▲ 40 x 60CM  
■ 2CM

CAPRI  
**NUTMEG**



FLOOR: TUMBLED EDGE MOSAIC 29.8 x 32.7CM



WALL/FLOOR: NUTMEG 60 x 120CM



FLOOR: NUTMEG 90x90CM



WALL: TUMBLED EDGE SUBWAY 10x20CM FLOOR: NUTMEG 60x60CM

# CAPRI EARL GREY



▲ 30 x 60CM

◄ 60 x 120CM

▼ 60 x 60CM

▲ 90 x 90CM



**TUMBLLED EDGE MOSAIC**  
29.8 x 32.7CM



**TUMBLLED EDGE SUBWAY**  
10 x 20CM



**2CM PAVER**  
▲ 60 x 60CM  
■ 2CM



**Pencil Edge Bullnose**  
▲ 40 x 60CM  
■ 2CM





FLOOR: EARL GREY 60x120CM WALL: TUMBLED EDGE MOSAIC 29.8x32.7CM



FLOOR: EARL GREY 60x60CM



WALL: EARL GREY 30 x 60CM

Slate is the strong and gritty component, an iconic and layered stone that we used to form the basis of the project. To enrich the design we have integrated the defined and elegant veins of the Collemandina in the foreground and later the complex and elaborate grid of the fine veins of the Imperiale.



WALL/FLOOR: EARL GREY 60 x 120CM







# CAPRI PEPPER



- ▲ 30 x 60CM
- ◀ 60 x 120CM
- ▼ 60 x 60CM

▲ 90 x 90CM



**TUMBLED EDGE MOSAIC**  
29.8x32.7CM



**TUMBLED EDGE SUBWAY**  
10x20CM



**2CM PAVER**  
▲ 60 x 60CM  
■ 2CM



**Pencil Edge Bullnose**  
▲ 40 x 60CM  
■ 2CM



WALL/FLOOR: PEPPER 60x120CM



FLOOR: PEPPER 60x120CM



FLOOR: PEPPER 90x90CM



WALL: PEPPER 30x7.5CM

# CAPRI **PEPPER**

WALL: TUMBLED EDGE SUBWAY 10x20CM





FLOOR: PEPPER 60 x 60CM



FLOOR: PEPPER 60 x 120CM WALL: TUMBLED EDGE MOSAIC 29.8 x 32.7CM



## CAPRI **IN & OUT SURFACETEC**

We build on its many years of expertise in the field of research and production of ceramic materials, and constant interaction with architects, designers and consumers, offering them a mature and stable surface technology with innovative and highly advanced features.



Pencil Edge Bullnose  
40x60cm  
2cm

FLOOR: GLACIER 60x60x2CM

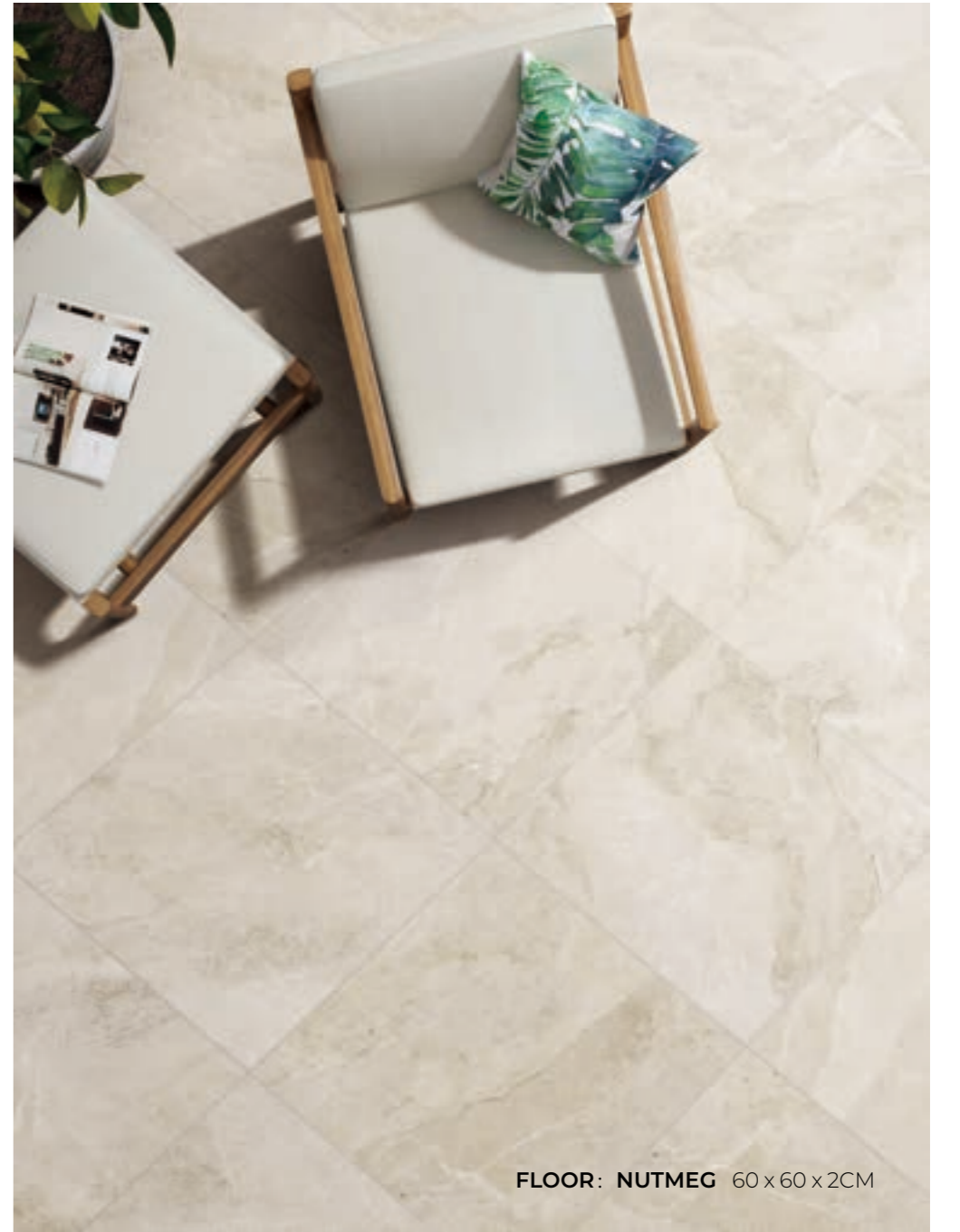


FLOOR: SALT 60x60x2CM



FLOOR: NUTMEG 60 x 60 x 2CM

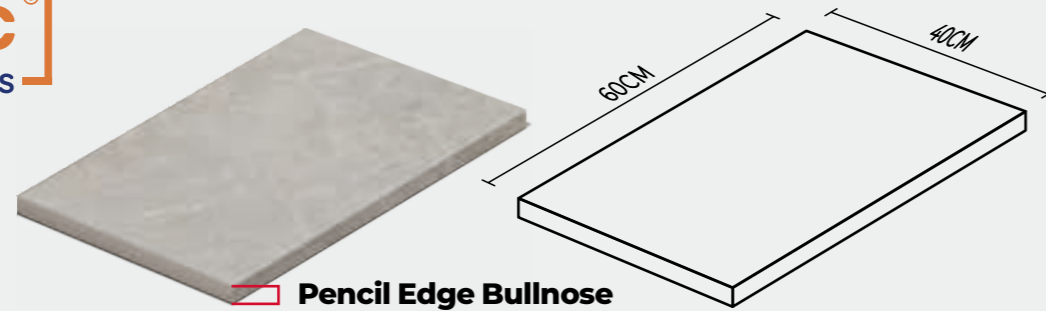
**SURFACETEC**<sup>®</sup>  
In/Out Solutions



FLOOR: NUTMEG 60 x 60 x 2CM



**SURFACETEC**<sup>®</sup>  
In/Out Solutions



**Pencil Edge Bullnose**  
40 x 60CM  
2cm



FLOOR: EARL GREY 60 x 60 x 2CM





## TECHNICAL SPECIFICATIONS

TECHNICAL CHARACTERISTIC	STANDARD TEST METHOD	PRESCRIBED VALUES	MANUFACTURER'S VALUES
<b>MEASUREMENT &amp; SURFACE APPEARANCE</b>			
LENGTH	EN ISO 10545-2	±0.6%	±0.1%
WIDTH	EN ISO 10545-2	±0.6%	±0.1%
THICKNESS	EN ISO 10545-2	±5%	±3%
TRANSMUTATION	EN ISO 10545-2	±0.5%	±0.2%
<b>PHYSICAL PROPERTIES</b>			
WATER ABSORPTION	EN ISO 10545-3	≤0.5%	≤0.5%
BREAKING STRENGTH	EN ISO 10545-4	≥1300N	≥1300N
MODULUS OF RUPTURE	EN ISO 10545-4	≥35N/mm <sup>2</sup>	≥35N/mm <sup>2</sup>
RESISTANCE TO ABRASION	EN ISO 10545-7	≤205mm <sup>3</sup>	≤160mm <sup>3</sup>
SLIP RESISTANCE, WET PENDULUM TEST METHOD, SLIDER 96	AS 4586-2013/AMDT 1-2017 APPENDIX A	N/A	P4
<b>CHEMICAL PROPERTIES</b>			
RESISTANCE TO CHEMICALS RESISTANCE TO HOUSEHOLD CHEMICALS AND SWIMMING POOL SALTS	EN ISO 10545-13	MINIMUM GB	<b>PASS</b>
RESISTANCE TO STAINING	EN ISO 10545-14 when subjected to chemicals	MINIMUM CLASS 3	<b>PASS</b>

## PACKING SPECIFICATIONS

SERIES	SIZES	PCS / CTN	M <sup>2</sup> / CTN	M <sup>2</sup> / PLT	CTN / PLT	KG / PLT
<b>CAPRI</b>	60X120CM	2	1.44	86.4	60	2070
	90X90CM	2	1.62	64.8	40	1520
	60X60CM	4	1.44	57.6	40	1240
	30X60CM	8	1.44	57.6	40	1240
	30X30CM	11	0.99	55.44	56	1232
	60X60X2CM	2	0.72	28.8	40	1280
	40X60X2CM	2	0.48	30.72	60	1440



There is no denying the grandeur of stone. Be inspired by our collection of stone designs, exclusively created to bring elegance and beauty to your home.



