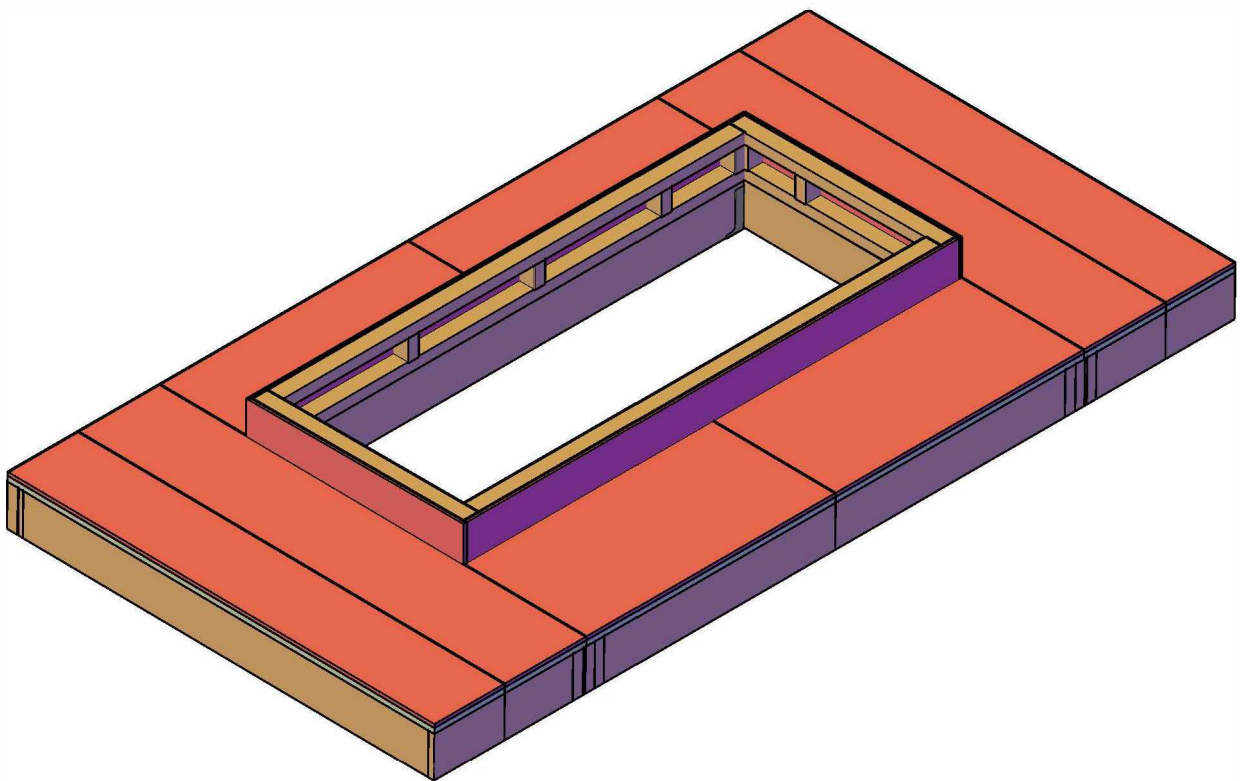




Roofs

# Icospan Installation Guide

Issue 1.0  
July 2019



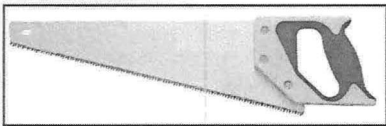
icospan™

# Tools Required To Install Solid Roof

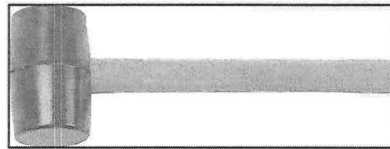
\*All fixings supplied with roof kit. NB Fixings to house wall not supplied.

⚠ It is the installer's responsibility to make sure the correct access safety equipment is used during the installation of the Icotherm Solid Roof, such as access ladders and scaffolding.

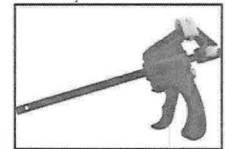
⚠ Failure to follow the instructions provided in this manual will invalidate your product warranty.



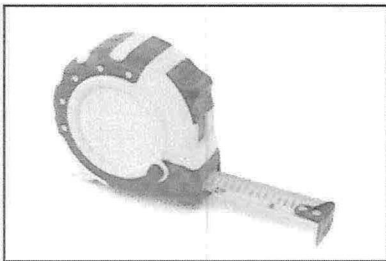
Hand Saw



Rubber Mallet & Hammer



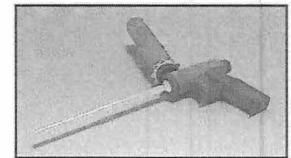
Clamp



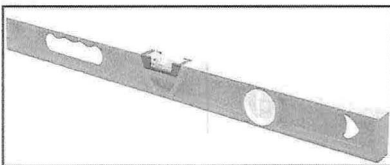
Tape Measure



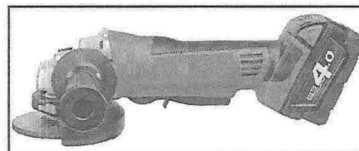
Cordless Drill



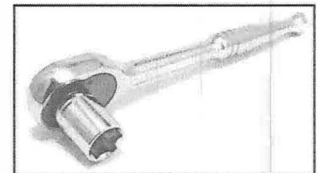
Expanding Foam & Gun



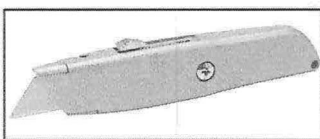
Spirit Level



Angle Grinder



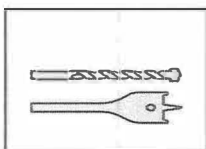
17mm Socket Wrench



Utility Knife



Rip Saw



12mm Masonry bit &  
30mm Flat bit

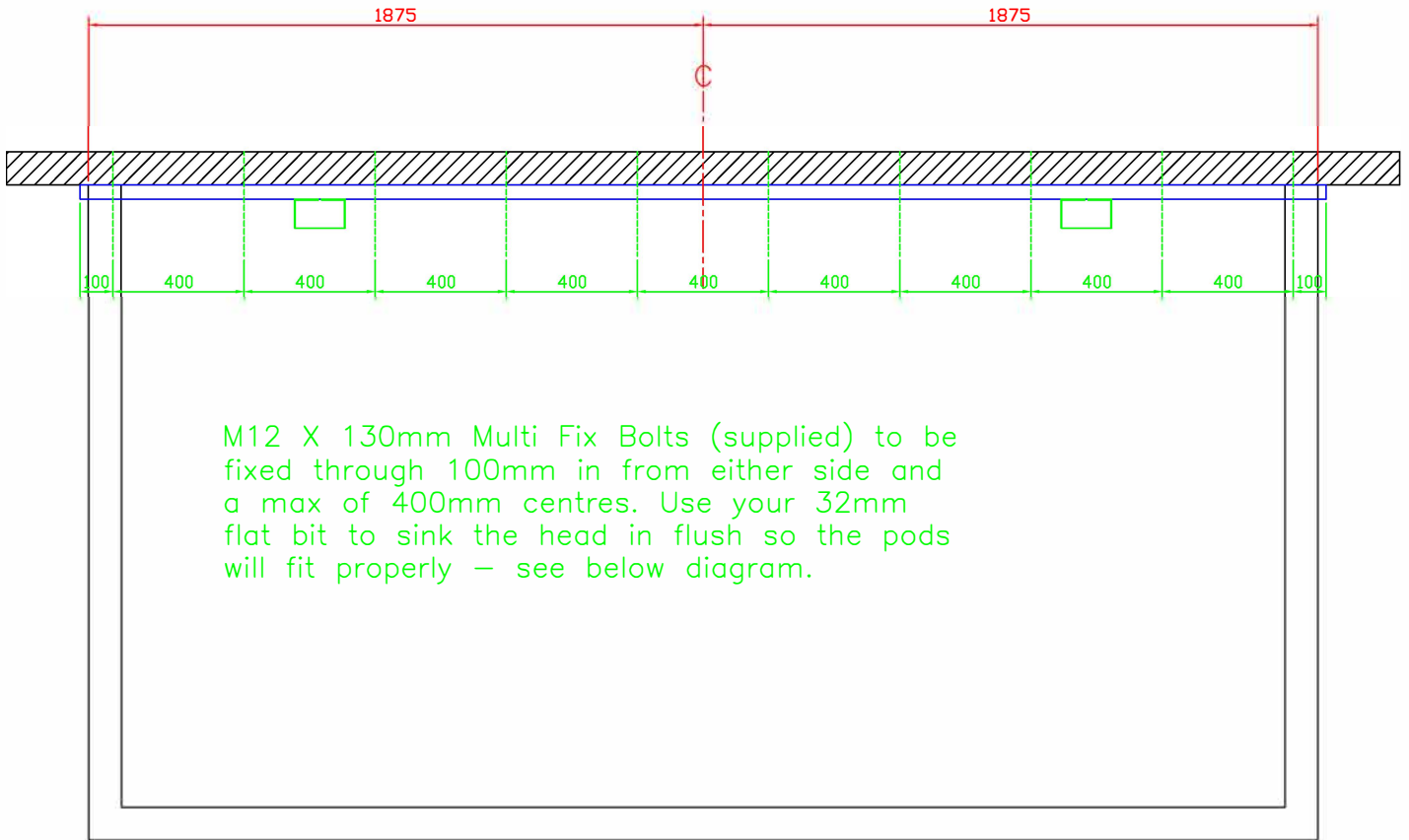


Pencil / Marker

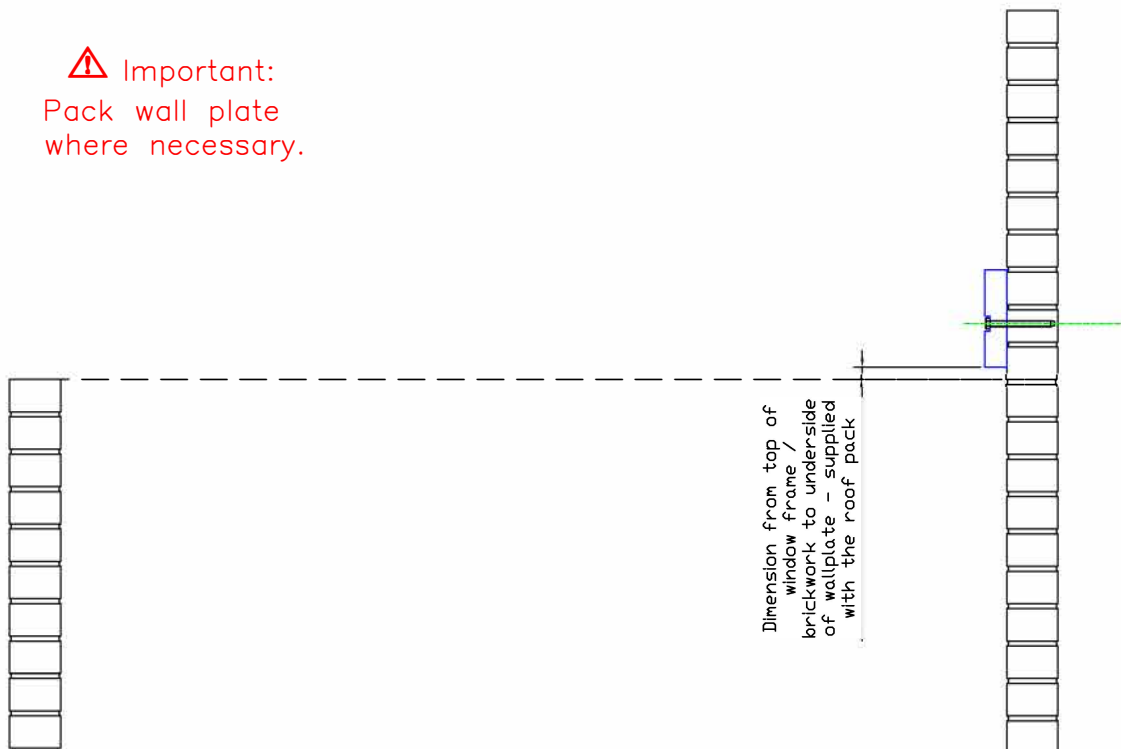
# Wall Plate Setting Out



Wallplate to be set centrally to the window frames / brickwork.



**⚠ Important:**  
Pack wall plate where necessary.



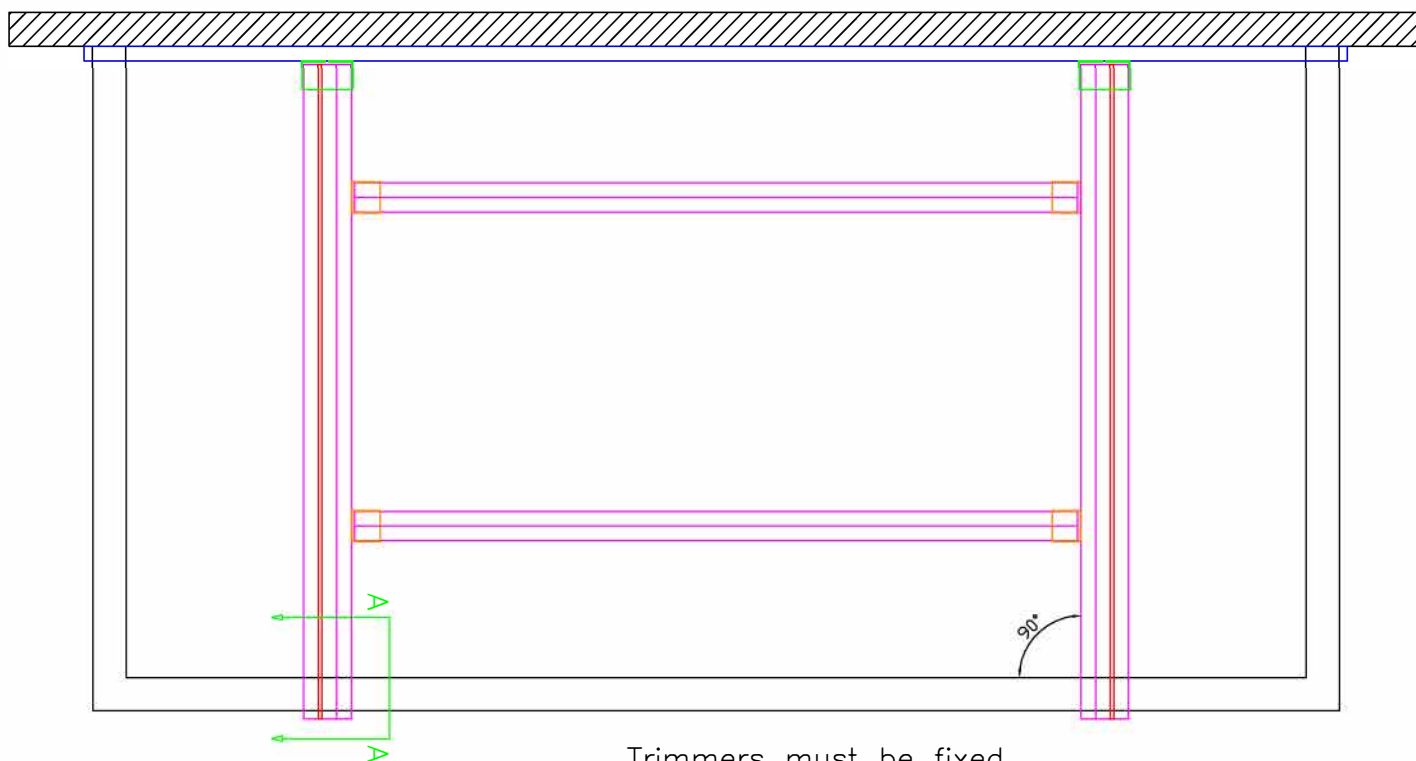
# Fitting The Trimmers



Roofs

Trimmer hangers are pre installed in the factory – SA1500 91mm for 2 trimmers together or SA1500 150mm for 3 Trimmers (with 1 x 11mm OSB packer per 3 trimmers) . 2 & 3 ply trimmers are used dependent on the span of the lantern.

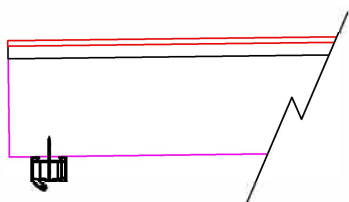
Wallplate hangers are pre installed in the factory – SA1500 150mm for 3 Trimmers (1 x 11mm OSB packer per 3 trimmers).



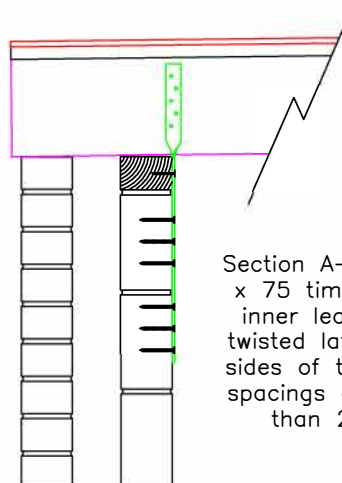
Trimmers must be fixed at 90° to the window frames / brickwork.

## ⚠ Important:

Sheradised nails must be used to fix the trimmers into the hangers and ties (supplied by Icotherm)



Section A-A on window frames. Deglaze the top windows and fix up through the frames into each of the trimmers and rafters when the pods are on.

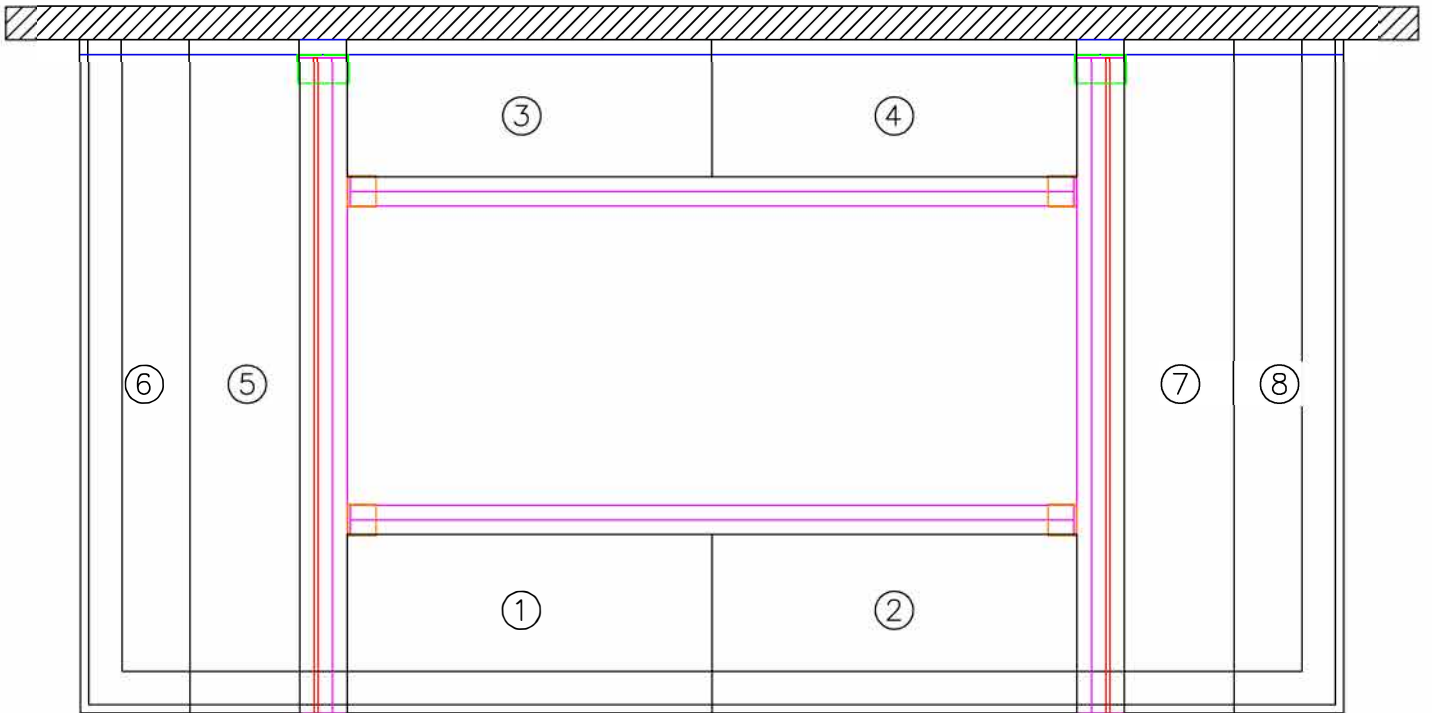


Section A-A on brick. 100 x 75 timber wallplate on inner leaf then use the twisted lateral ties on the sides of the trimmers. Tie spacings can be no more than 2mtr centres.

# Pod Assembly Sequence

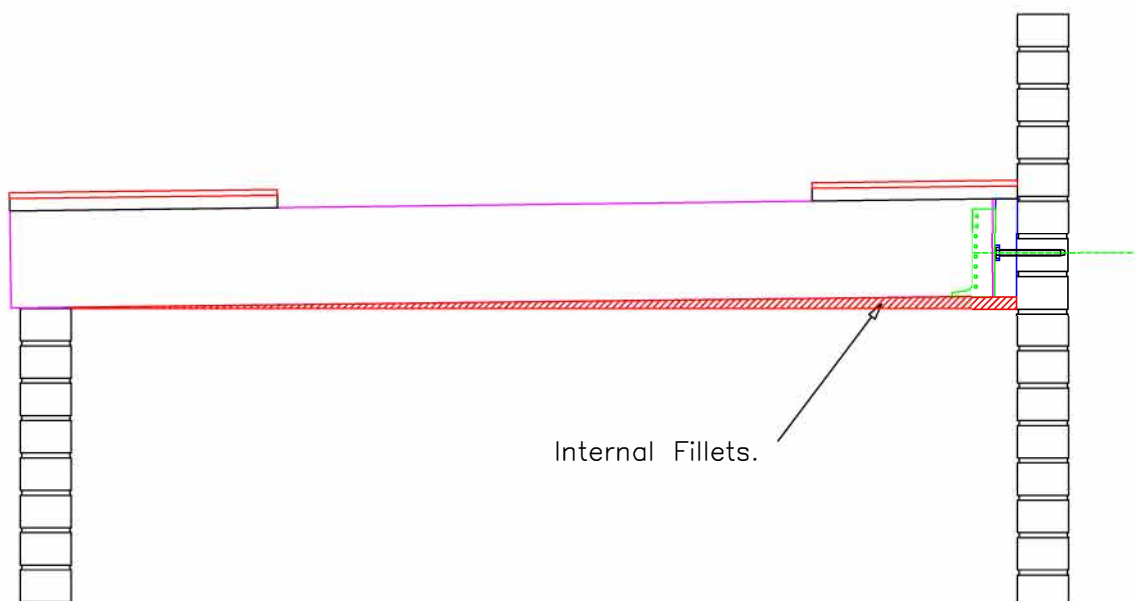
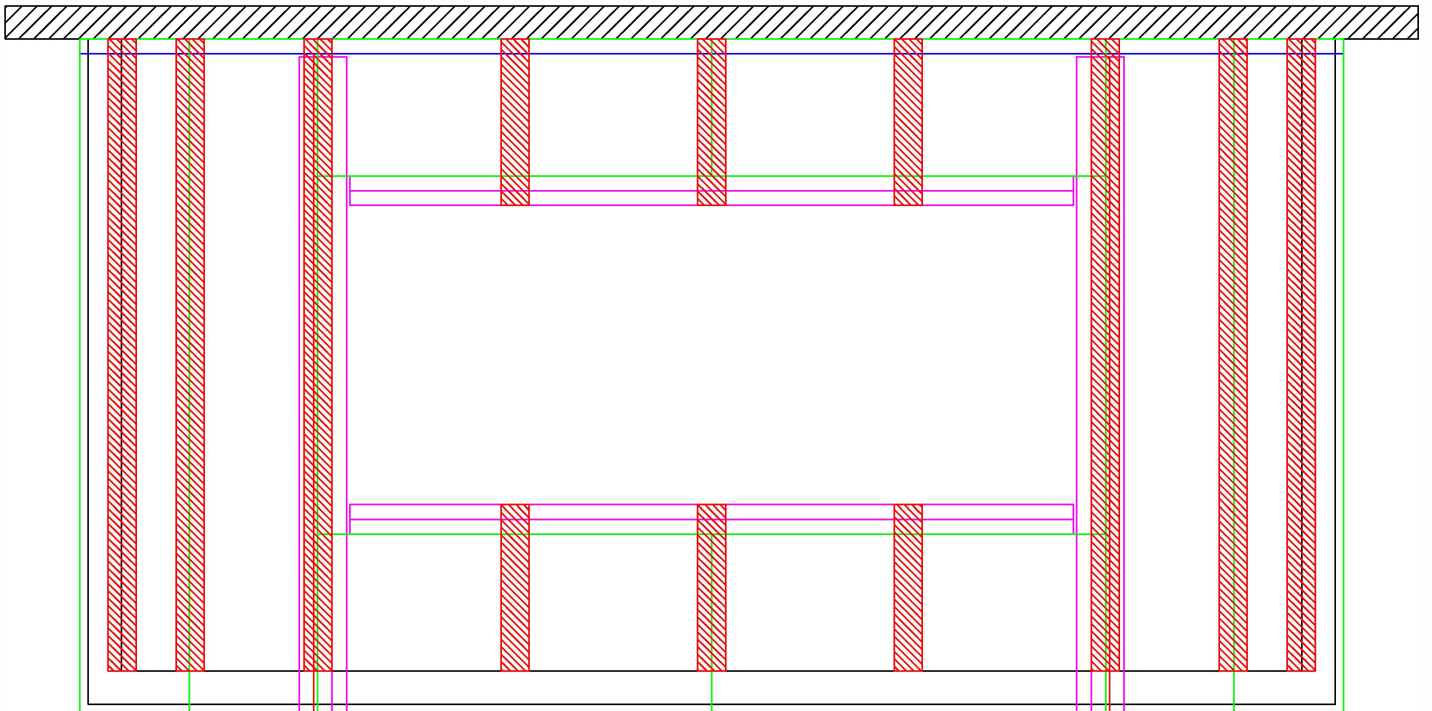


Once the trimmers are in place follow the recommended pod assembly sequence below screwing each pod into place as you go.



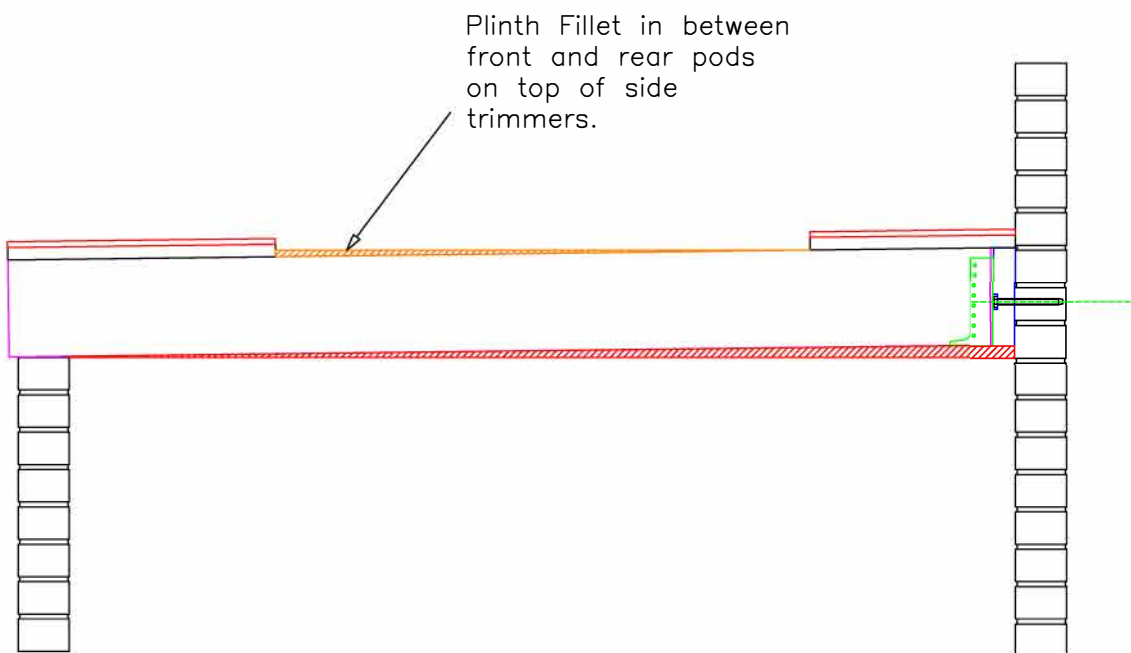
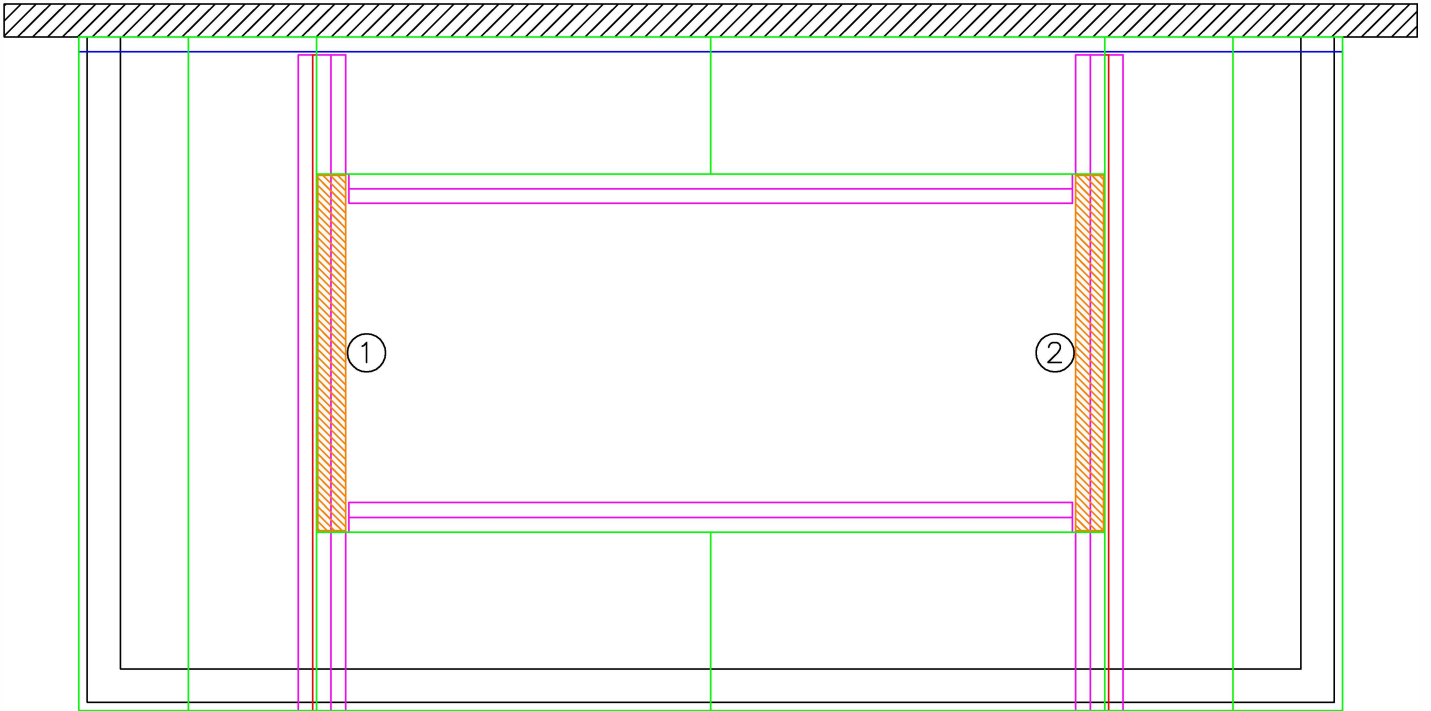
# Rafter Fillets

To make the ceiling level, fit the fillets to all rafters and trimmers running from front to back and out the ones that cross the opening to create the smaller fillets in front & behind the opening.



# Plinth Fillets

Fit the Plinth Fillets to the top of the side trimmers so that the plinth is level for fitting the Lantern.

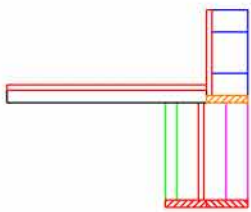
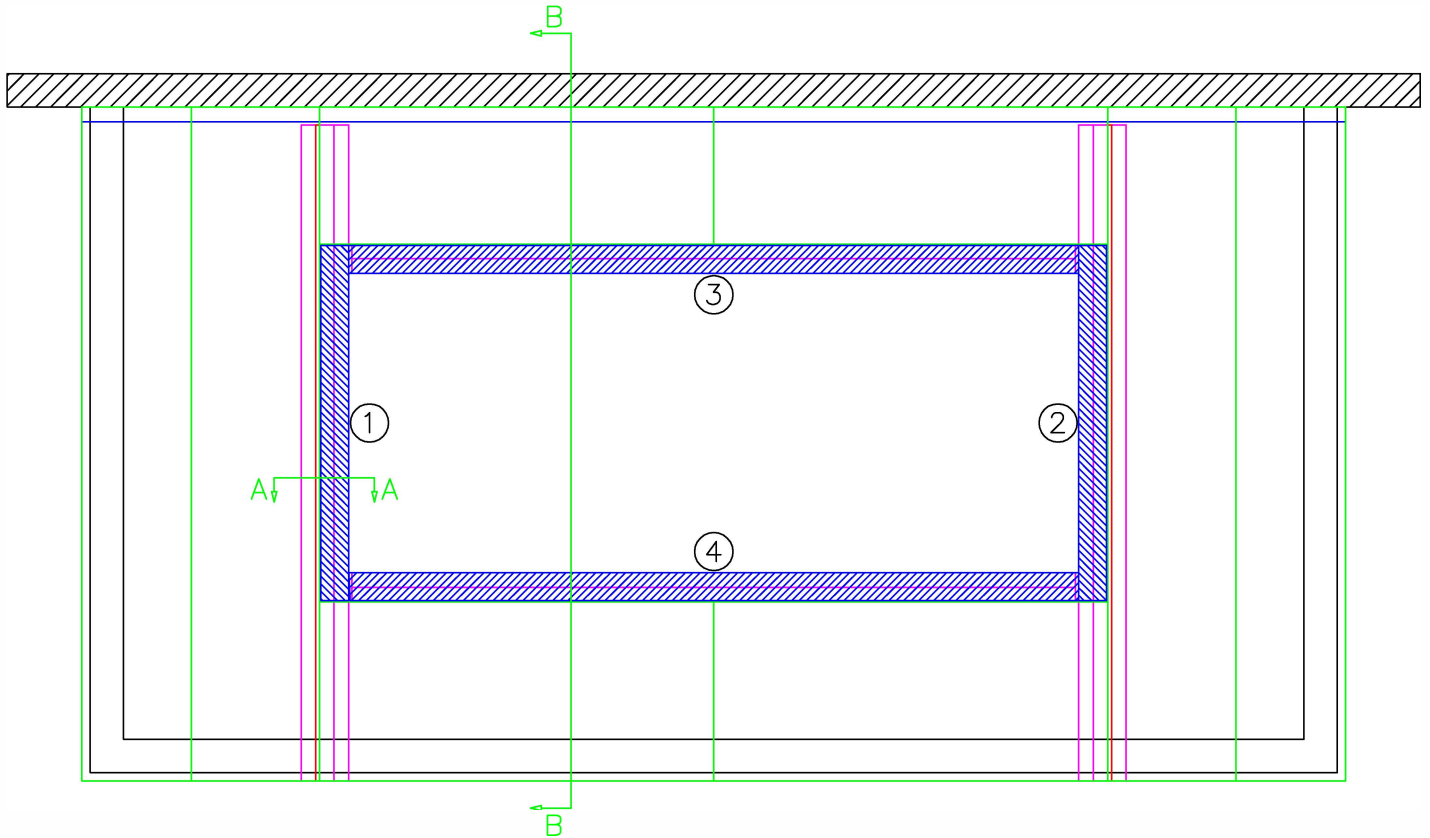


# Fitting The Plinth

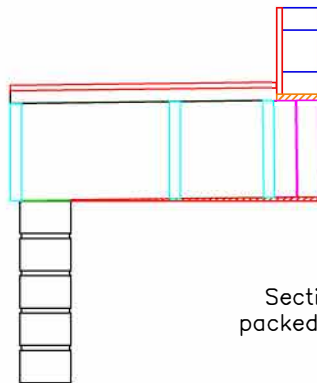


Roofs

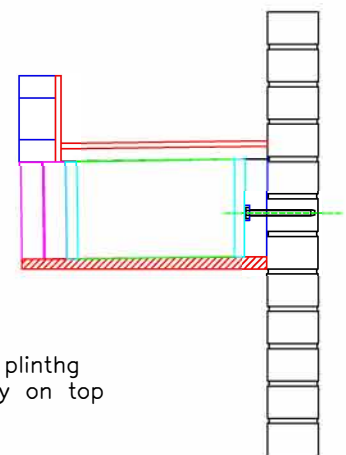
Fix the side plinths in place first then the back plinth and finally the front plinth which has packers pre installed to the height of the fillets so the top of the plinth is flat and level all round.



Section A-A. Plinth sat on top of the fillets.



Section B-B. Showing front plinth packed up & rear plinth directly on top of the trimmers.



The roof is now ready to cover and the lantern can go on, please refer to the manufacturers install manuals for these steps.