



CliqueFie
www.cliquefie.com

WARNING



Not a Frisbee



Not a Music Box



Not a Cup Coaster

Puck and Stand sold together or separately



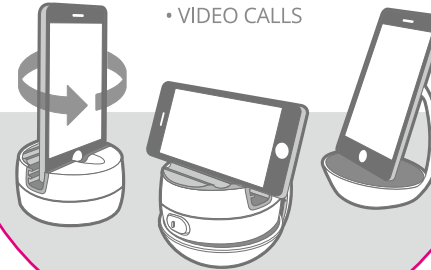
Puck



Stand

WHAT *Puck* CAN DO?

- 360° ROTATION
- WATCHING MOVIES
- VIDEO CALLS



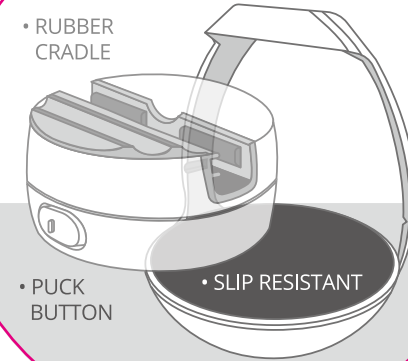
www.cliquefie.com

• DUAL STAND

• RUBBER CRADLE

• PUCK BUTTON

• SLIP RESISTANT



CliqueFie



GET PUCK READY!



1

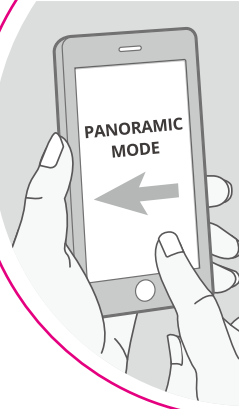
Rotate Puck clockwise until the end (around 3 1/2 laps). Be sure the Puck is on stop mode by pressing the Puck Button.

FRIENDLY REMINDER



Do not turn the puck aggressively. This is not a music box. Please **DO NOT** over rotated Puck.

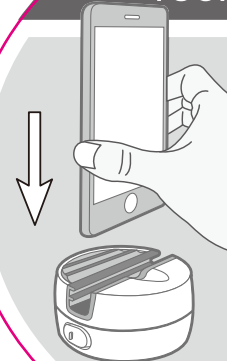
ACTIVATE PANORAMIC APP



2

Grab your phone, select panoramic app, and remember to change panoramic direction to **RIGHT-to-LEFT!**

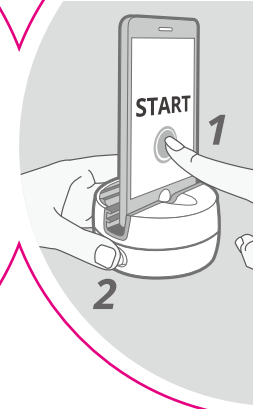
POSITION YOUR SHOT



3

Place your phone at **90 DEGREES** for best photo results.

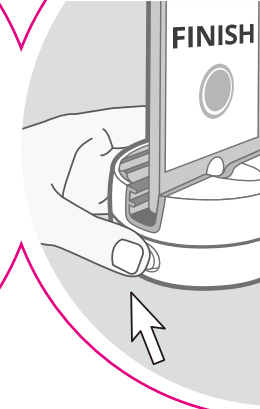
START SHOOTING



4

Press phone shutter button, then press Puck Button to start spinning.

STOP SHOOTING



5

Once you're done, press Puck Button to stop shooting.