

# TACKLE

## THE INNOVATION CONTINUES

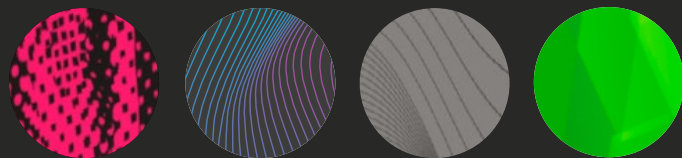
Floky's research team has developed a new device for the protection and recovery category, thus TACKLE was born, the revolutionary shin guard that exploits an innovative geometry and the use of new materials that aim to increase protection and shock absorption, while maintaining high lightness and comfort.

**SIZES**  
ONE SIZE

**WEIGHT**  
61 gr

**COMPOSITION**  
45% hydrogenated rubber  
45% polyurethane  
5% polyester  
5% polypropylene

**COLOURS**  
pink claw, blueberry, wave grey, green emerald



FOAMED MATERIAL



ALVEOLAR STRUCTURE

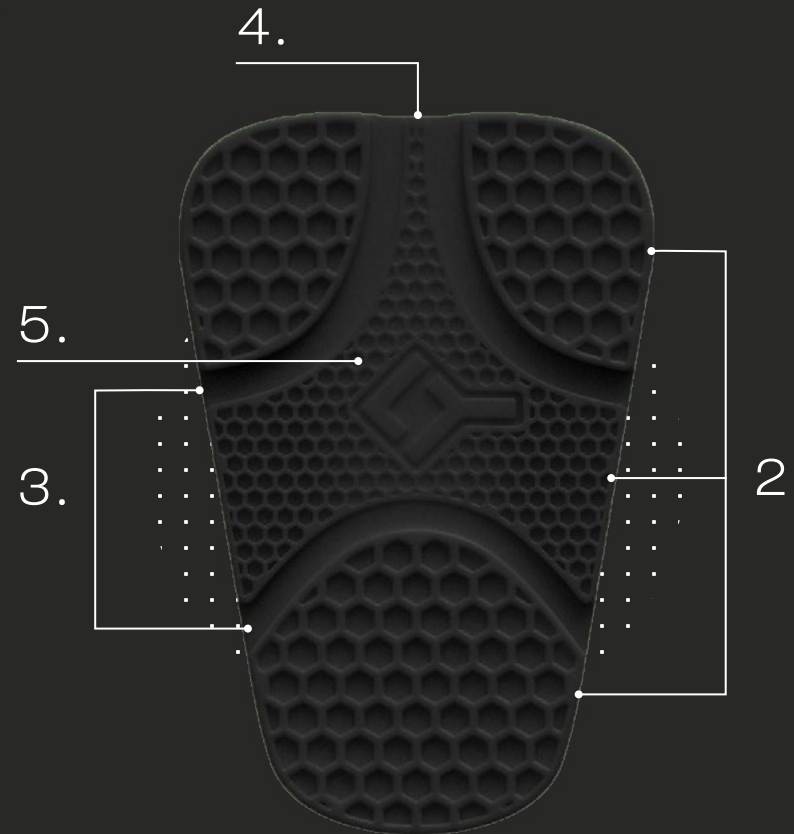
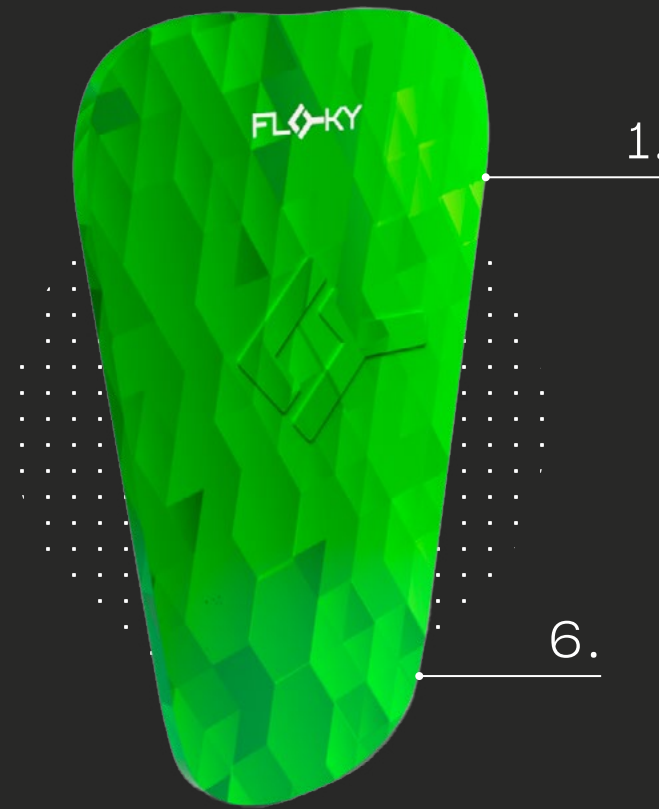


### 1. + PROTECTION

The special external three-dimensional elastic disc gel combined with the internal elastic disc foam guarantee high impact absorption, distribution and dispersion, increasing the degree of protection.

### 2. + ABSORPTION

The padding structure is composed of different zones that have different sizes of the hexagons. Each zone has been designed to have its own function and is composed of different alveoli which ensure increased shock absorption and facilitate shock dispersion.



ALVEOLAR STRUCTURE



THREE-DIMENSIONAL STRUCTURE



### 3. + FUNCTIONAL DESIGN + ENERGY DISPERSION IMPACT

The hexagons that make up the honeycomb structure are of two different sizes and are separated by grooves. In fact, the parts with the largest hexagon are on the sides, while the central part has smaller, less thick hexagons. This combined with the grooves, which ensure a guided deformation of the shin guards at the moment of impact, can guarantee a high absorption and dispersion of impact energy.

### 4. + THE FIRST THREE-DIMENSIONAL SHIN GUARDS

TACKLE is the first shin guard that works three-dimensionally, the different size and height of the hexagonal alveoli of the absorbing material, allow a deformation capacity of the entire structure when subjected to impact, strongly increasing the protection capacity of the tibia.

FOAMED MATERIAL



MEMORY STRUCTURE



### 5. + LIGHTNESS + COMFORT

The special internal foam material provides greater lightness, softness and adaptability as well as high strength and a very high degree of fixation to the skin.

### 6. + MEMORY + CUSTOMISED

Thanks to the new structure with memory, there is no distinction between right and left as it adapts perfectly to the support area, increasing the contact area with the leg without altering the size. Once worn, it immediately takes the shape of the shin as if it had been custom-designed.

[www.FlokyIreland.com](http://www.FlokyIreland.com)