

Venturi® Carbtech (L) Stair Nosing

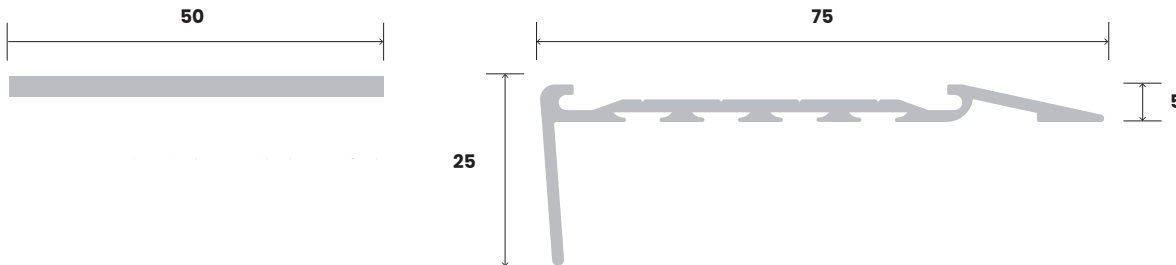
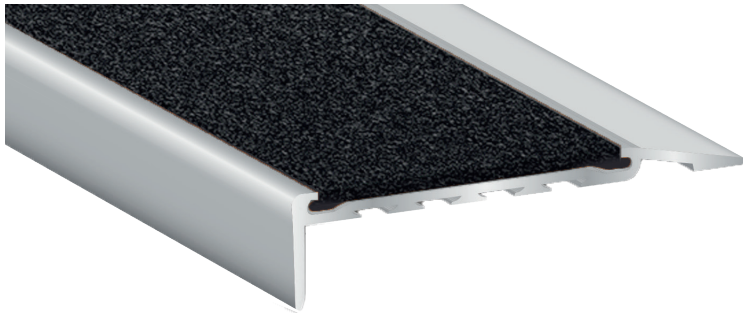
Surface Mounted - 25 x 75mm

The Venturi® Carbtech stair nosing is suitable for both internal and external applications, providing a non-slip surface in oily, wet, dry or soiled conditions. Carbtech is UV stabilised and manufactured from silicon carbide. (The hardest material on earth next to diamond.) It is impact, chemical and corrosion resistant; however, it is also very abrasive making it less suitable for barefoot traffic areas.

The Carbtech inserts are available in a variety of colours that have been matched to complement our Tactile Ground Surface Indicator (TGSi) range. Korb's specially formulated 'glow in the dark' Carbtech is highly visible making it particularly applicable in areas where low light conditions from power outage or smoke may occur.

Luminous
Contrast
Requirement

30%



SUBSTRATES

STONE | CERAMIC | CONCRETE | MASONRY | TIMBER | VINYL | CHECKER PLATE

Silver Nosing	222511	222513	222518	222519
Black Nosing	222521	222523	222528	222529
Insert Option	Black	Grey	Yellow	Luminous
Mean Dry Luminance	4.94	27.53	48.44	57.89
Mean Wet Luminance	3.94	27.36	47.78	57.86
Slip Resistance Classification	P5			
Warranty	10 years			

Check it out
on our
new site!



NATIONAL (Head Office)
T 1300 00 KORB (5672)
E info@korb.au

MELBOURNE
17 Anderson Road, Thornbury VIC 3071
T +61 3 8506 0106
E melbourne@korb.au

ADELAIDE
71 Maria Street, Thebarton SA 5031
T +61 8 7081 9811
E adelaide@korb.au