

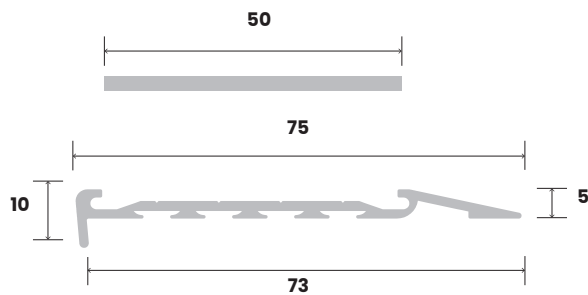
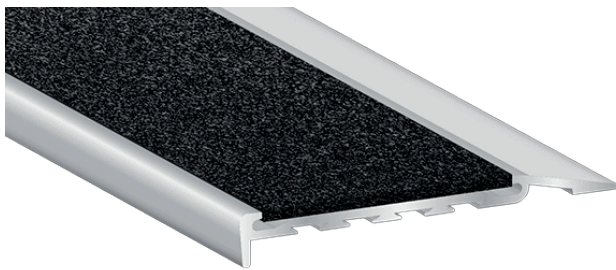
Venturi® Carbtech Stair Nosing

The Venturi® Carbtech stair nosing is suitable for both internal and external applications, providing a non-slip surface in oily, wet, dry or soiled conditions. Carbtech is UV stabilised and manufactured from silicon carbide. It is impact, chemical and corrosion resistant; however, it is also very abrasive making it less suitable for barefoot traffic areas. The inserts are available in a variety of colours that have been matched to complement our TGSi range.

Luminous
Contrast
Requirement

30%

Venturi® Carbtech Surface Mounted



SUBSTRATES

STONE | CERAMIC | CONCRETE | MASONRY | TIMBER | VINYL | CHECKER PLATE



Silver Nosing	222111	222113	222118	222119
Black Nosing	222121	222123	222128	222129
Insert Option	Black	Grey	Yellow	Luminous
Mean Dry Luminance	4.94	27.53	48.44	57.89
Mean Wet Luminance	3.94	27.36	47.78	57.86
Slip Resistance Classification	P5			
Warranty	10 years			

Check it out
on our
new site!



NATIONAL (Head Office)
T 1300 00 KORB (5672)
E info@korb.au

MELBOURNE
17 Anderson Road, Thornbury VIC 3071
T +61 3 8506 0106
E melbourne@korb.au

ADELAIDE
71 Maria Street, Thebarton SA 5031
T +61 8 7081 9811
E adelaide@korb.au