

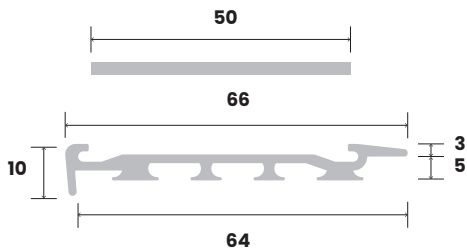
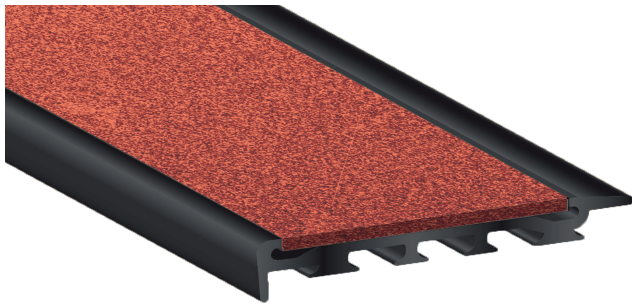
## Venturi® Carbtech Stair Nosing

The Venturi® Carbtech stair nosing is suitable for both internal and external applications, providing a non-slip surface in oily, wet, dry or soiled conditions. Carbtech is UV stabilised and manufactured from silicon carbide. It is impact, chemical and corrosion resistant; however, it is also very abrasive making it less suitable for barefoot traffic areas. The inserts are available in a variety of colours that have been matched to complement our TGSi range.

Luminous  
Contrast  
Requirement

30%

### Venturi® Carbtech Flooring Tile



#### SUBSTRATES

CARPET TILE | VINYL TILE



| Silver Nosing                  | 222311   | 222313 | 222318 | 222319   |
|--------------------------------|----------|--------|--------|----------|
| Black Nosing                   | 222321   | 222323 | 222328 | 222329   |
| Insert option                  | Black    | Grey   | Yellow | Luminous |
| Mean Dry Luminance             | 4.94     | 27.53  | 48.44  | 57.89    |
| Mean Wet Luminance             | 3.94     | 27.36  | 47.78  | 57.86    |
| Slip Resistance Classification | P5       |        |        |          |
| Warranty                       | 10 years |        |        |          |

Check it out  
on our  
new site!



**NATIONAL (Head Office)**  
T 1300 00 KORB (5672)  
E info@korb.au

**MELBOURNE**  
17 Anderson Road, Thornbury VIC 3071  
T +61 3 8506 0106  
E melbourne@korb.au

**ADELAIDE**  
71 Maria Street, Thebarton SA 5031  
T +61 8 7081 9811  
E adelaide@korb.au