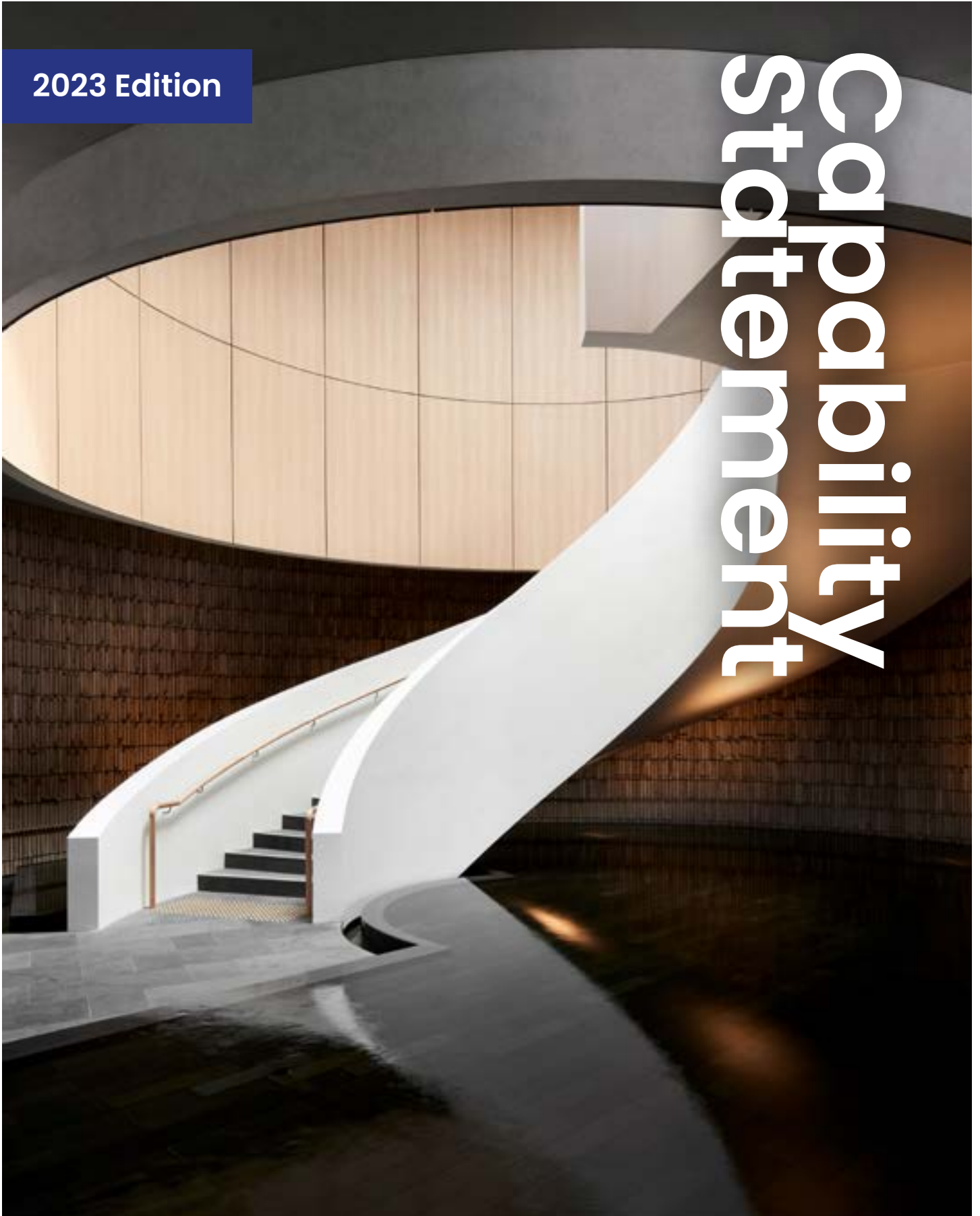




Australia's Premier Supplier For
Accessibility Products

2023 Edition

Capability Statement





Location | Springvale Community Hub
Architect | Lyons
Builder | Ireland Brown

EXECUTIVE SUMMARY

ELEVATING COMMUNITY ENVIRONMENTS

At Korb, our focus on client satisfaction and product performance drives us to create better and safer environments.

Effective commercial and public access is essential for enhancing individual life quality and supporting the economic vitality of businesses and communities. It's imperative that modern design solutions accommodate the needs of all, including individuals with physical and visual impairments. At Korb, we strive to achieve a balance between functionality, economics,

safety, and aesthetics in our access systems. Our comprehensive approach encompasses design, manufacturing, distribution, and installation to ensure regulatory compliance and meet individual client preferences.

As a committed industry leader, we continuously innovate with new products and patented designs to help clients realize their future visions.

Engaging public spaces,
one project at a time.



Location | Adelaide Festival Plaza
Architect | ARM Architecture
Builder | Outside Ideas

Korb

Innovative design,
Inclusive spaces.



TACTILES



STAIR NOSING



ENTRANCE MATTING



BIKE RACKS



BOLLARDS & WHEEL STOPS

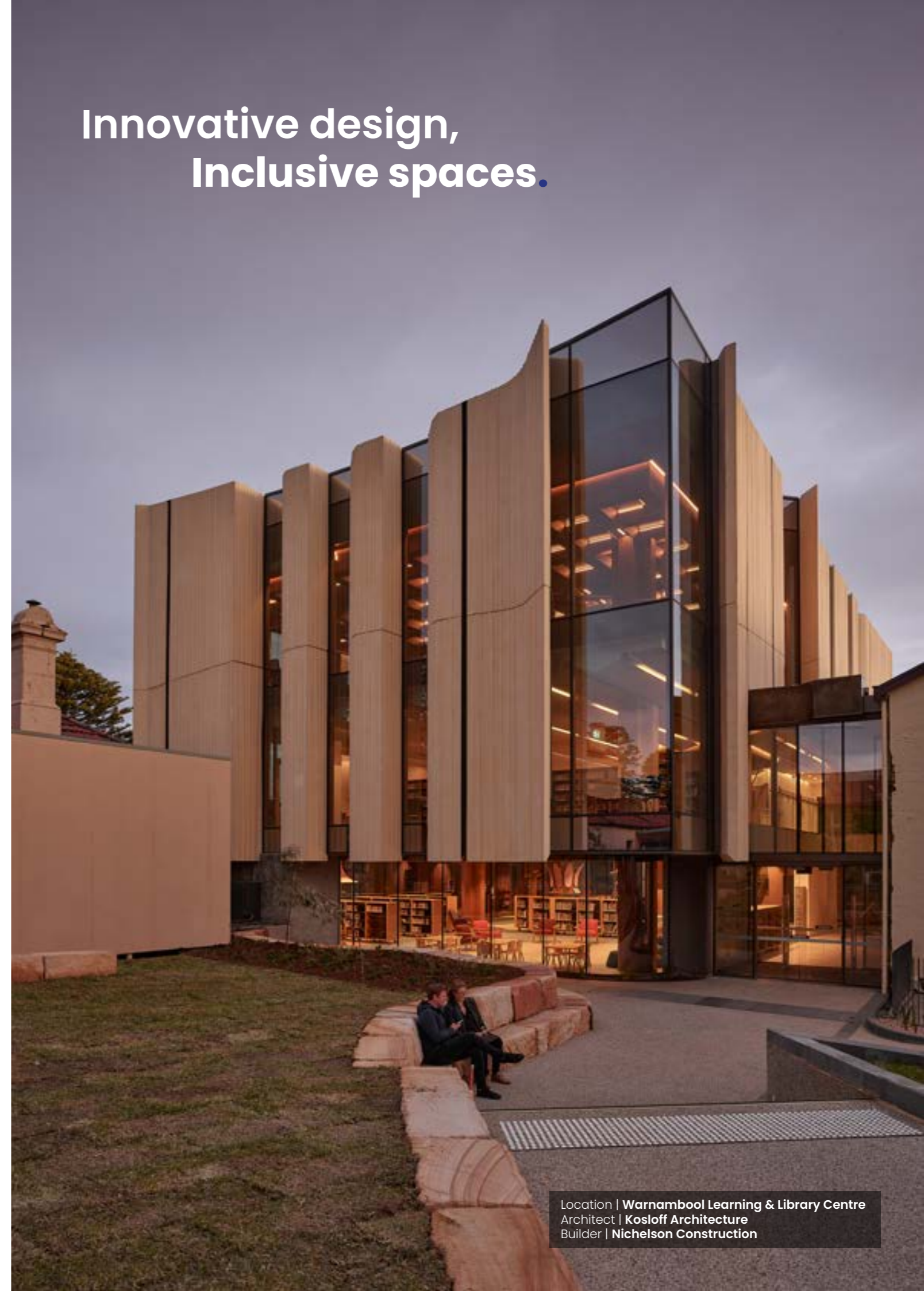


SKATE DETERRENENTS

PRODUCT RANGE

LEADER IN INNOVATION

Korb has quickly obtained a reputation as a leader in innovation and product quality throughout Australia. We understand that solutions can be designed to suit individual client needs, while still ensuring regulatory compliance is maintained.



Location | Warnambool Learning & Library Centre
Architect | Kosloff Architecture
Builder | Nichelson Construction



Speed Humps

Bollards

Skate Deterrents

Entrance Matting

Stair Nosing

Bike Racks

Tactile Indicators

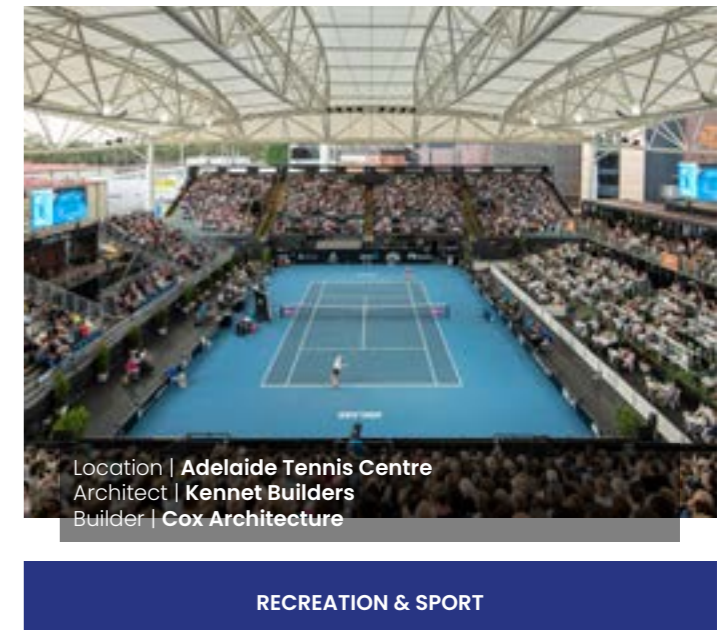
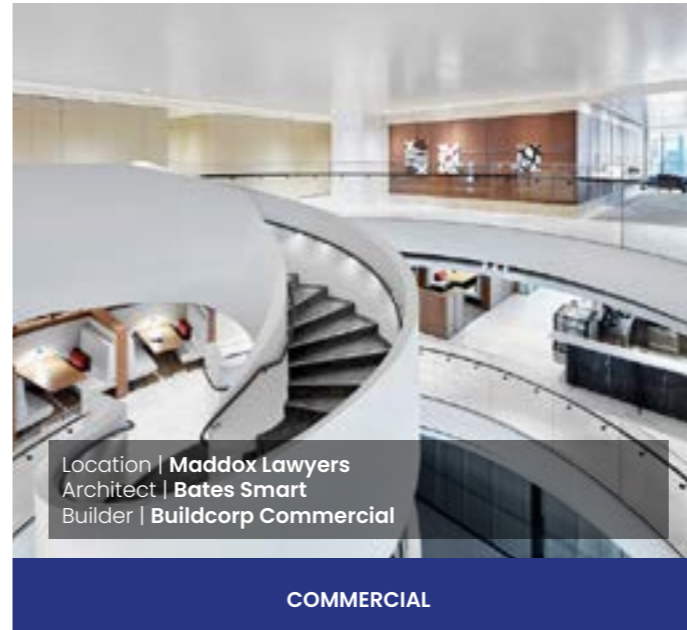
Our Product Range.

At Korb we seek to provide solutions to all your accessibility needs. Whether it's improving accessibility for the disabled and safe access for all, or excluding accessibility from nuisance activity or unsafe practices we will customise our solutions to address your requirements.

INDUSTRY EXPERTS

SECTORS WE THRIVE IN.

As a group we work to identify innovative solutions and deliver results through considered advice, attention to detail and collaborative leadership. We have a track record of success across all major sectors.





Location | Preston Station
Architect | Wood Marsh
Builder | North Western Program Alliance

OUR SERVICES

END-TO-END EXPERTISE.

At Korb, we work with you throughout all phases of the project cycle from Luminance Contrast Testing right through to installation. We are experts in the industry.

Luminance Contrast Testing & Reports

The provision of TGSIs, stair nosing and Braille signage with sufficient luminance contrast enhances accessibility for all people, especially for those with vision impairment, and is now a regulatory requirement.

- ▶ On-site testing
- ▶ Expert Advice
- ▶ Reporting

Installation Services

Korb is Victoria's largest TGSi installation team, specialising in high volume works in critical operation periods. We provide services across all sectors, fulfilling both State & Government funded projects across all tiers including commercial, civil, infrastructure, transport and maintenance

- ▶ Skilled & experienced installers
- ▶ Quality workmanship
- ▶ Installers of choice in the industry

Estimation & Access Consultants Services

With multiple estimators & access consultants on-site available to address your needs, Korb is ready to provide a consultative approach providing technical advice and compliant solutions to your site's accessibility requirements.

- ▶ Quotations for pre-tender
- ▶ Construction tender
- ▶ Quotations can be provided from architectural plans, specifications, or site inspections and are offered free of charge.
- ▶ Consultative approach



OUR PROJECTS

**Decades of local
experience.**

Caulfield to Dandenong Level Crossing Removal

The Caulfield to Dandenong Level Crossing Removal (CTD) project involved the replacement of nine hazardous rail level crossings with five elevated railway stations along one of Melbourne's busiest transport corridors. This project presented an opportunity to create a new linear park in Melbourne's metropolitan zone by elevating the rail line and stations. For decades, this rail corridor had been a major barrier to urban connectivity, adding to road congestion, limiting links between suburbs, and restricting the introduction of new rail services.

Cox Architecture led the design of the new stations, with each one having a consistent and unique architectural form that reflects the character of the station's surroundings. The elevated viaduct features a split solution that reduces visual bulk, allowing light and rainfall into the linear parks below. The project has transformed 22 hectares of open space into a green linear park, enhancing opportunities for community sport, retail, cross-corridor connectivity, and social interaction.

Korb has been a key player in the success of the LRXP's Station Upgrades since 2016 contributing to 34 of the 36 stations commissioned to date, thanks to our unwavering dedication to building strong partnerships with the major alliances. With our cutting-edge installation equipment, we offer unparalleled efficiency and quality, giving us a commanding advantage over others in the industry. Our proven track record of delivering large volumes of work within tight operating windows has earned us the trust of our clients in the rail corridor.

Sector	Rail Infrastructure (PTV)
Location	Carnegie, Murrumbeena, Hughesdale, Clayton and Noble Park Stations
Completion	2018
Builder	John Holland
Architect	Cox Architecture





Olderfleet

Olderfleet combines the elegance of heritage with modern surroundings to create a future-focused workplace that fosters a flexible and vibrant urban community. It honours Melbourne's Victorian architecture while providing an internationally acclaimed workplace that supports, nurtures, and engages its occupants.

The building comprises beautiful heritage buildings blended with contemporary architecture, featuring the beloved Victorian facade of the Olderfleet building and direct access to Collins Street and Flinders Lane.

During the design phase, Korb collaborated with Grimshaw architects to develop a custom Entry Matting product that blends seamlessly with the Collins Street Entry's aesthetic vision.

In addition, Korb supplied all the custom brass; trims, expansion joints, Nosing, and TGSi's products to enhance the overall offering.

Sector	Commercial/Heritage
Location	Collins St, Melbourne
Completion	2020
Builder	Mirvac
Architect	Grimshaw Architects & Carr Interiors
Products	Entry Matting, Nosing, TGSi's & Brass Trims

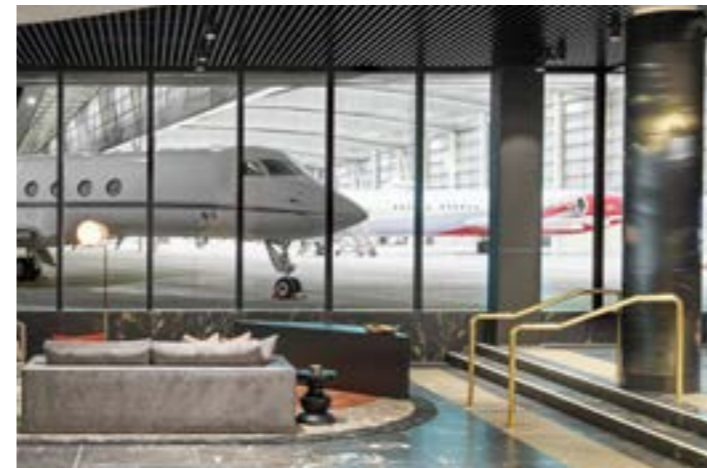


Melbourne Jet Base

The Melbourne Jet Base, was a thrilling project for Korb's project team. The facility provides a level of luxury service from arrival to departure, including aircraft operations and maintenance. The terminal facility offers state-of-the-art lounge and business facilities. The design, a collaboration between the client and consultant teams, features a main hangar for up to 18 aircraft, a specialty hangar, a central hub, and aircraft, pedestrian, and vehicle pavements, and landscaping. The design provides a functional workplace, hangarage, customs, and high-end guest lounge facilities. The Jet Base serves as an exclusive piece of Victoria's tourism infrastructure and showcases Cox's interiors' design capabilities.

The unique Australian palette of materials, textures, and colours evokes a sense of place and culture, setting it apart from other airport lounges worldwide. Our exclusive products, such as Entry Matting, Nosing, and TGSi's, enhance the ambiance and character of the dynamic space while ensuring compliance with equal access provisions.

Sector	Aviation
Location	Melbourne Jet Base
Completion	2018
Builder	Hutchinson Builders
Architect	Cox Architecture
Products	Entry Matting, Nosing, & TGSi's



Victorian Pride Centre

The Victorian Pride Centre in St. Kilda, Melbourne, is the first purpose-built centre for Australia's LGBTIQ+ communities. Grant Amon Architects and Brearley Architects and Urbanists won the design competition and created the building as a series of conceptual tubes that integrate landscape, architecture, and interior design into one iconic building. It accommodates various programs and flexible interior planning. The Centre houses major LGBTIQ+ resident organisations and provides flexible multi-use spaces for hire, including meeting rooms, a rooftop terrace, co-working spaces, a theatre, and a gallery.

Korb is committed to promoting diversity, and we are proud to have had the opportunity to make a contribution to the Victorian Pride Centre by supplying a range of car parking equipment. This included Bicycle Racks, Bollards, Height Clearance Bars, Corner Guards, Convex Mirrors, Wheel Stops, as well as our proprietary Entry Matting, TGSi, Nosing, and Skate Deterrents.

Sector	Public
Location	Fitzroy Street, St Kilda, Melbourne
Completion	2021
Builder	Hansen & Yuncken
Architect	Grant Amon Architects (GAA) and Brearley Architects and Urbanists (BAU)
Products	Bicycle Racks, Bollards, Height Clearance Bars, Corner Guards, Convex Mirrors, Wheel Stops, Entry Matting, TGSi, Nosing, and Skate Deterrents.

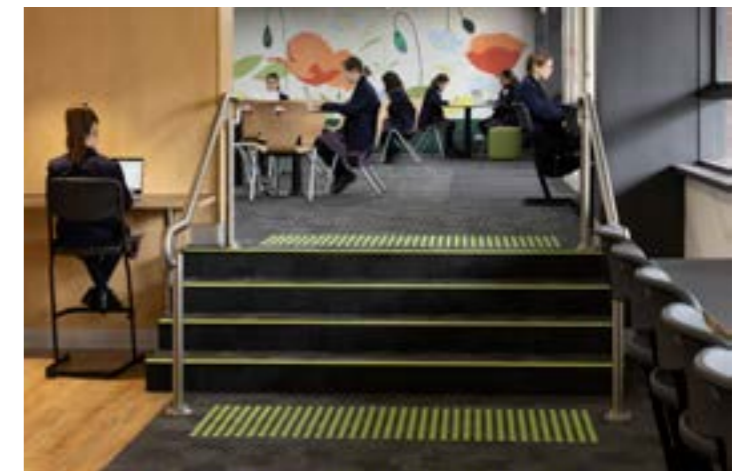


Our Lady of Mercy College

As part of Stages 5 & 6 of its Master Plan, Our Lady of Mercy College in Heidelberg had planned two new buildings. The existing Villa (Arts) Building was demolished to make way for a new three-storey Design, Art, and Technology (DAT) facility with a basement. Alongside this, a new two-storey café and classroom facility was constructed, connected to the DAT building and the existing Yarra Building by covered walkways. The facilities included design, art, and technology classrooms, hospitality facilities, general classrooms, student café, offices, and amenities.

The multi-storey DAT building was designed to promote interdisciplinary connections between students and teachers, while the adjacent café-style canteen and learning hub were connected by an atrium walkway. The interior design used dots, lines, and perforated materials to represent the connection between disciplines and contrast with the curved architectural form and lighting.

Sector	Education
Location	Cape St, Heidelberg, Melbourne
Completion	2021
Builder	2Construct
Architect	ClarkeHopkinsClarke
Products	TGSi's & Stair Nosing



GET IN TOUCH

LET'S WORK TOGETHER.

Korb

NATIONAL (Head Office)
T 1300 00 KORB (5672)
E info@korb.au

MELBOURNE
17 Anderson Road,
Thornbury VIC 3071
T +61 3 8506 0106
E melbourne@korb.au

ADELAIDE
71 Maria Street,
Thebarton SA 5031
T +61 8 7081 9811
E adelaide@korb.au

korb.au



Location | Stop 28 Park Street, Royal Park
Client | Yarra Trams
Builder | Coleman Rail

Korb

Step into
a **safer** world.