



Automatic cradle machine STERNENTRAUM

Instruction manual

Before using this product, please read the instruction carefully and use it properly.

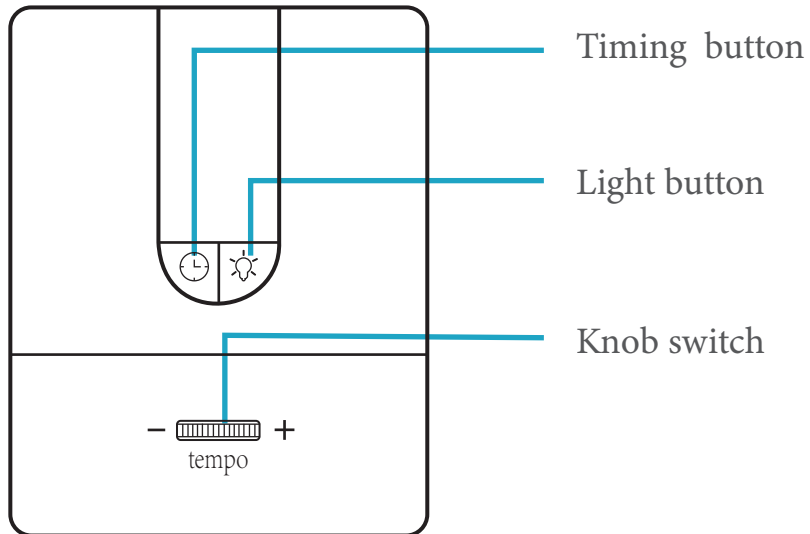


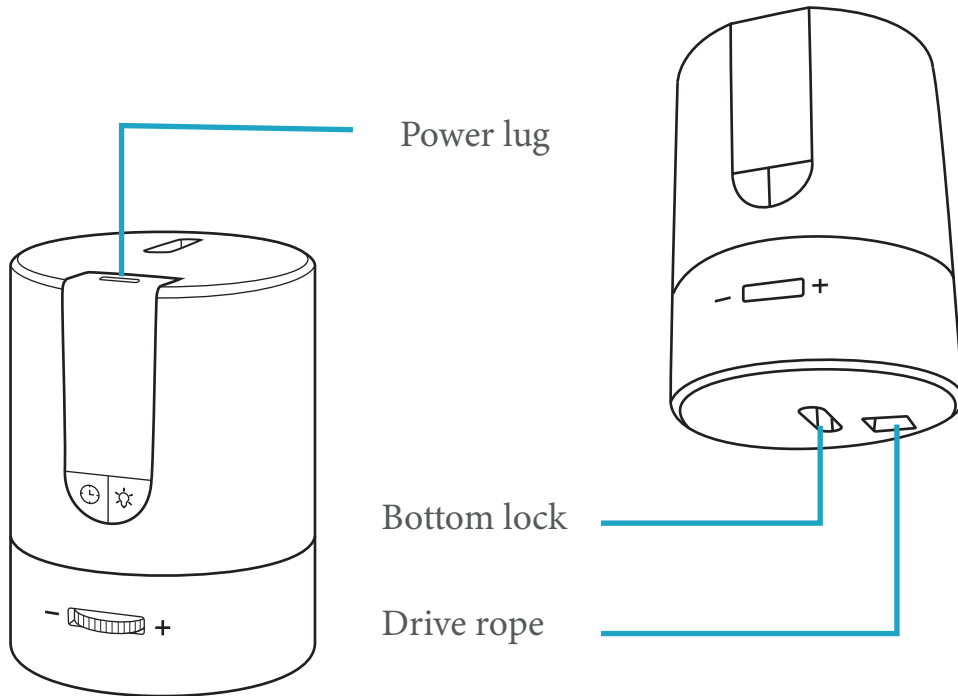


INSTRUCTIONS FOR USE

1. This product is intended for baby cradle rocking. No other use is permitted.
2. The maximum weight of this product is 17 kg.
3. This product must be installed in accordance with the Installation Guide. Incorrect installation may result in a product drop accident.
4. Before placing the baby in the cradle, please turn the cradle machine off first, to avoid the machine perceiving the weight and scaring the baby.
5. The product must be used in the sight of an adult or a person with a certain level of safety awareness.
6. When starting the cradle machine, please slowly slide up and adjust the speed, and slightly push down the cradle cloth to bring the cradle machine to start power.
7. Observe whether the speed of shaking is suitable, and then continue to adjust upward until it is suitable.
8. For safety reasons, do not buy or use non-original parts to replace local parts, so as to avoid accidents.
9. To be on the safe side, please purchase other parts of the cradle machine from the original manufacturer, such as springs, hanging rings, transmission ropes and power plugs.
10. Unplug the power cord when not in use.
11. It is not possible to disassemble and repair the electric cradle machine by yourself, which may result in permanent damage to the electric cradle machine and loss of warranty eligibility.
12. If the electric cradle machine does not function properly, stop using it and contact the dealer or authorized electric cradle machine repair center.
13. The original power plug must be used. The use of uncertified non-original power plugs may cause electric shock, fire, explosion and other hazards.
14. Please stop using this machine when the baby can sit up or crawl. If you want to continue using this machine, you must use it under the control of an adult.
15. Customers should use this machine correctly, the wrong way of using it will lead to safety accidents.

FUNCTION DESCRIPTION





PRODUCT LIST

Five spring assemblies

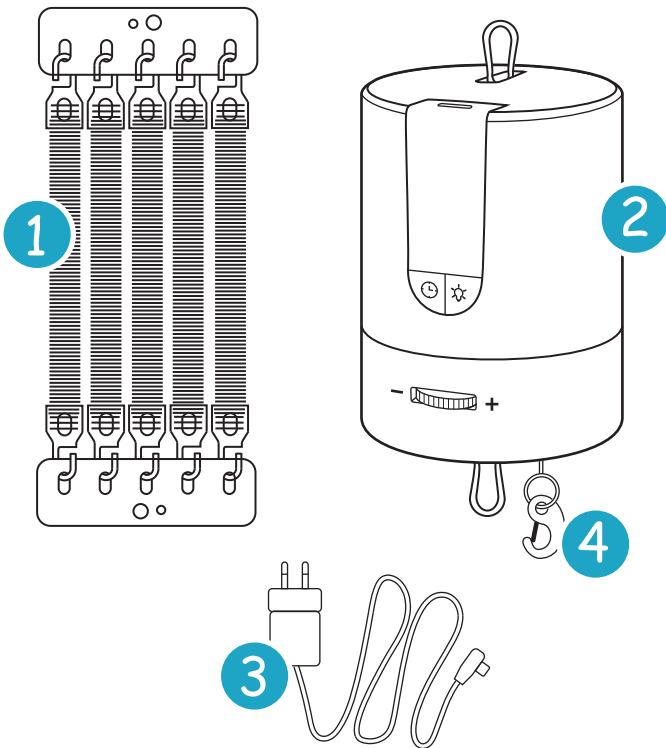
① Springs (5 pcs/pet)
Stainless steel plate × 2

② Electronic cradle

③ Power plug

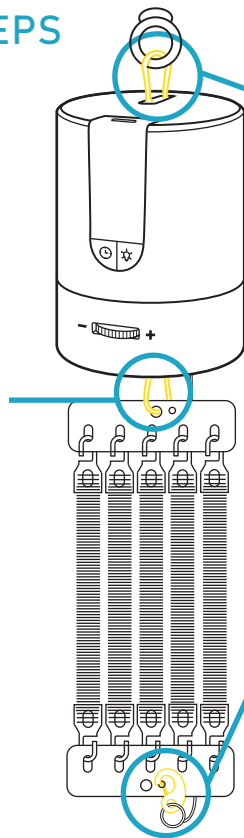
④ Drive rope

(Hammocks and stand tripod
need to be purchased separately)



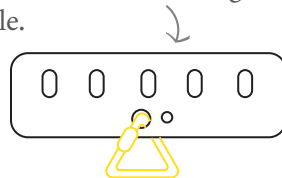
INSTALLATION STEPS

2. Hang the bottom safety buckle of the cradle in the middle hole of the iron plate.

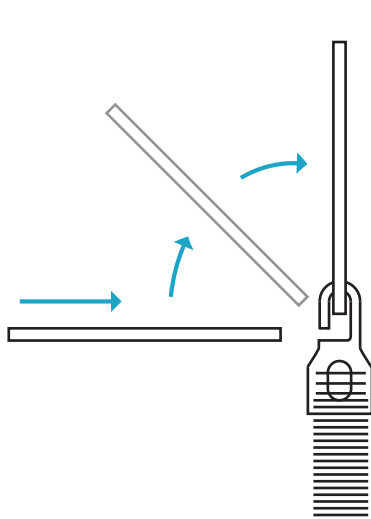


1. Take out the safety buckle of the electronic cradle and hang on to the tripod.

3. Pull down the drive rope and fasten it on the small hole on the right of the bottom of the spring (note that the small hole is on the right). The triangle safety buckle of the hammock is hung on the big hole.



SPRING INSTALLATION INSTRUCTIONS

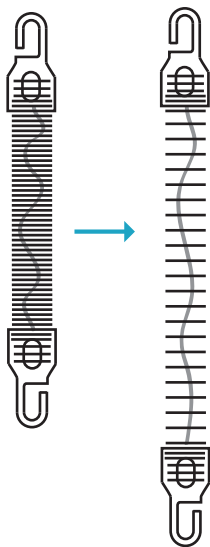


Insert the iron plate horizontally into the hook and then lift it upright. The bottom hook is installed in the same way.



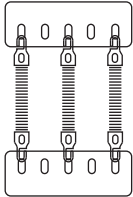
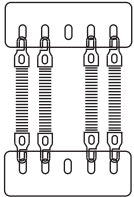
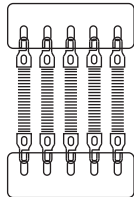
It is recommended that the two ends of the spring hook be installed in the opposite direction

SPRING USAGE GUIDE



*Built-in spring safety rope
If the spring is pulled down too long, you need to add a spring

(please refer to the figure below, the number of spring parts and installation position)

Spring mounting position			
Suspended weight*	4kg-7kg	7kg-10kg	8kg-12kg

*Attention: suspended weight=hammock weight+baby weight

- The minimum number of springs must be 3.
- The installation must be kept upright and not tilted.
- Please add springs regularly according to the baby's weight gain.



METHOD OF USE

Please scan the code to see the assembly video



CARE AND MAINTENANCE

1. Keep the cradle machine and its accessories away from the reach of children to avoid injury.
2. Do not expose the cradle machine and its accessories to avoid overheating, burning, explosion and other accidents.
3. Do not place the electric cradle machine and its accessories in high temperature environment or high pressure equipment (such as microwave oven), otherwise it may cause product damage Bad, causing fires and other accidents.
4. This cradle machine is not waterproof, please do not wash with water, or put it in a wet place where rain is easy to splash wet.
5. Do not use tools to pry open the assembly of cradle machine, which will damage and scratch the cradle machine.
6. The cradle machine is not shock-proof, please take it carefully when installing and removing the machine, so as to avoid falling and damaging, and do not shake it.
7. Do not use corrosive liquid to spray or clean the cradle machine. If there is dust and dirt, gently wipe with clean water soft cloth.

TECHNICAL PARAMETER

Name	Electronic cradle
Appearance material	Craft plastic
Inner material	Metallic stainless steel
Be applicable to	Infant/Newborn
Input current	110-240V.50-60Hz
Output current	5V1.0-1.5A
Maximum guideline	7.5W
Product Dimensions	3.94*3.94*4.72 Inches
Hook material	Stainless Steel
Inner plate	Stainless steel
Stretch spring	Stainless steel alloy
Cradle weight	0.55kg
Weight of one spring	2.5kg
Five spring bear weight	15kg



Wiegeparadies

Träumen & Wohlfühlen



Innovarex GmbH

WIEGEPARADIES

info@wiegeparadies.ch

www.wiegeparadies.ch

Alle Rechte vorbehalten. © - 2024