



Barefoot International & Fly High Mfg.
3879 North Richards Street
Milwaukee, WI 53212

Phone: 414-964-3668 / 800-932-0685 Fax: 414-964-5767
E-Mail: bifh@mindspring.com Web: www.fatsac.com

Fly High Pylon Installation Instructions

WARNING

FAILURE TO ADHERE TO ALL WARNINGS COULD CAUSE DAMAGE TO EQUIPMENT OR VEHICLE, PERSONAL INJURY OR EVEN DEATH.

BE AWARE OF YOUR SURROUNDINGS AND ALWAYS STAY CLEAR OF BRIDGES, OVERHANGING TREES, LOW HANGING POWER LINES AND ANY OTHER OBSTACLES • DO NOT TOW THE BOAT WITH THE FLY HIGH PYLON INSTALLED • DO NOT USE TO PULL TUBES, KITES, PARA SAILORS OR STRANDED BOATS • BE SURE TO CHECK ALL HARDWARE, CLAMPS AND CABLES FOR WEAR AND PROPER INSTALLATION PRIOR TO EACH USE • THERE MUST ALWAYS BE A LOAD ON BOTH SAFETY CABLES TO ENSURE THE EXTENSION IS RIGID • THIS PRODUCT IS TO BE USED WITH FACTORY INSTALLED 2½" PYLONS ONLY • MAKE SURE FACTORY INSTALLED PYLON IS IN PROPER WORKING CONDITION PRIOR TO INSTALLATION

WARNING

THE USE OF THIS PRODUCT INVOLVES INHERENT RISKS OF INJURY OR DEATH. TO REDUCE THESE RISKS THE INDIVIDUAL MUST ALWAYS STAY WITHIN THEIR LIMITS AND AT SPEEDS THAT DO NOT EXCEED THEIR LEVEL OF SKILL. THIS PRODUCT ALLOWS WAKEBOARDERS TO ATTAIN MORE HEIGHT AND IT IS STRONGLY RECOMMENDED THAT EACH USER TAKES A SLOW APPROACH TO THE WAKE UNTIL THEY FULLY ADJUST TO THE DIFFERENCE IN FEEL AND HOW THE PYLON WORKS.

- 1- Read through all directions and warnings completely before installing this product.**
- 2- Slide lower section completely over the factory mounted pylon until it rests on top of the pylon.
- 3- Slide upper section with cables into the lower section until it rests on the 3/8" bolt.
- 4- Pull the sling through the boat's trailer eye hook with equal lengths on either side of the bow. Wrap the sling up and around the bow and rest it in place. (Figure 1)
- 5- Clip the carabineer at the end of the guy cable assembly through both ends of the sling. Be sure the cables are not twisted prior to doing this.
- 6- Open the handle on the over-center buckle. Pull any slack out of the *top cable* and adjust it so the loop at the end is approximately 1½"-2" in diameter (Figure 2). When the cable is snug, tighten the set screws for this cable with the provided allen wrench. Make sure you tighten them until they are extremely tight.
- 7- Close the handle on the over-center buckle which will load tension onto the pylon, pulling it slightly forward and making it rigid. (Figure 1)

8- Pull the slack out of the *bottom cable* so it is snug. Make sure the cable loop is approximately 1½”-2” in diameter (Figure 2). Tighten the set screws with the provided allen wrench. Be sure you tighten them until they are extremely tight. Both cables should now have approximately the same amount of tension.

9- Slide the cable pad over the cables and cable clamp, tuck any excess cable into the pad. (Figure 1)

NOTE- Use the delron swivel attached to the lower section of the pylon to ski from the factory installed pylon height. (Figure 6)

FIG. 1



FIG. 2

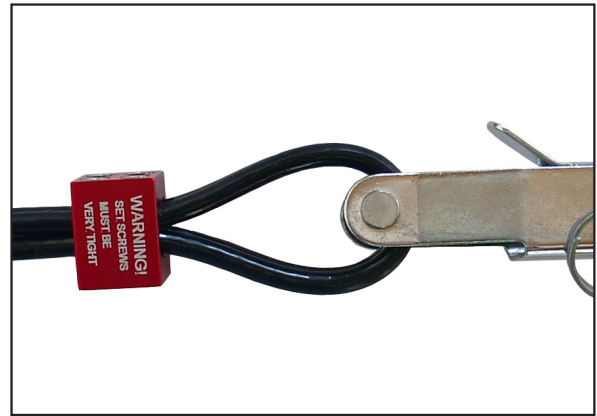


FIG. 3



FIG. 4



FIG. 5

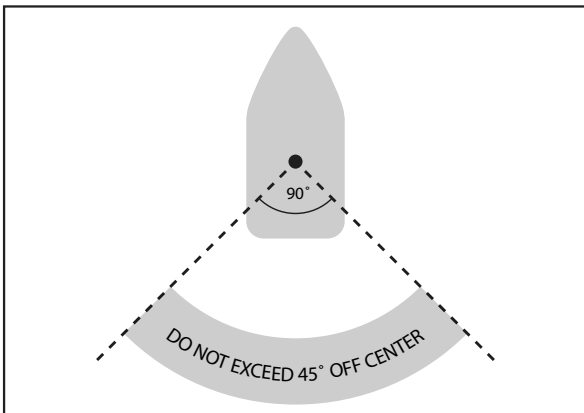


FIG. 6

