



**Barefoot International & Fly High Mfg.**  
**3879 North Richards Street**  
**Milwaukee, WI 53212**

**Phone: 414-964-3668 / 800-932-0685 Fax: 414-964-5767**  
**E-Mail: bifh@mindspring.com Web: www.fatsac.com**

## The Deluxe Boom Installation Instructions

### **WARNING**

#### **FAILURE TO ADHERE TO ALL WARNINGS COULD CAUSE DAMAGE TO EQUIPMENT OR VEHICLE, PERSONAL INJURY OR EVEN DEATH.**

**BE AWARE OF YOUR SURROUNDINGS AND ALWAYS STAY CLEAR OF BRIDGES, DOCKS AND ANY OTHER OBSTACLES • DO NOT USE THE BOOM WITHOUT THE CABLES ATTACHED TO THE BOW OF THE BOAT • DO NOT TOW THE BOAT WITH THE BOOM INSTALLED • DO NOT USE TO PULL TUBES, KITES, PARA SAILORS OR STRANDED BOATS • BE SURE TO CHECK ALL HARDWARE, CLAMPS AND CABLES FOR WEAR AND PROPER INSTALLATION PRIOR TO EACH USE**

### **WARNING**

THE USE OF THIS PRODUCT INVOLVES INHERENT RISKS OF INJURY OR DEATH. TO REDUCE THESE RISKS THE INDIVIDUAL MUST ALWAYS STAY WITHIN THEIR LIMITS AND AT SPEEDS THAT DO NOT EXCEED THEIR LEVEL OF SKILL. THIS PRODUCT IS A TRAINING AID FOR ALL TYPES OF SKIING AND SHOULD ONLY BE USED FOR THAT PURPOSE. DO NOT HANG OFF THE BOOM WHEN THE BOAT IS IN MOTION UNLESS THE INTENT IS TO SKI. THE DRIVER OF THE BOAT SHOULD ALWAYS FOCUS THEIR ATTENTION ON THE SURROUNDINGS, NOT THE SKIER.

**1- Read through all directions and warnings completely before installing this product.**

**IMPORTANT- THE BOOM CLAMP MUST BE INSTALLED ON NON-TAPERED PORTION OF THE PYLON.**

- 2-** Attach the boom clamp to the pylon using two bolts and washers. Be sure you tighten the bolts evenly, only turning them a couple turns at a time and alternating between them. Don't tighten the bolts completely because you will be adjusting the clamp in a later step.
- 3-** Pin the inside section of the boom to the clamp using the quick release pin.
- 4-** Slide the outside boom section into the inside boom section until the push pin snaps entirely into its hole.

**NOTE- For the next step, the boom should be angled slightly up and forward.**

- 5-** Adjust the boom height so it will be positioned chest-high on an average height person when in use.
- 6-** Have someone hold the boom in position at the desired angle while you finish tightening the bolts on the clamp. Be sure you tighten them evenly and firmly.

7- Hook the carabineer on the cables to the boat's trailer under-bow eye hook.

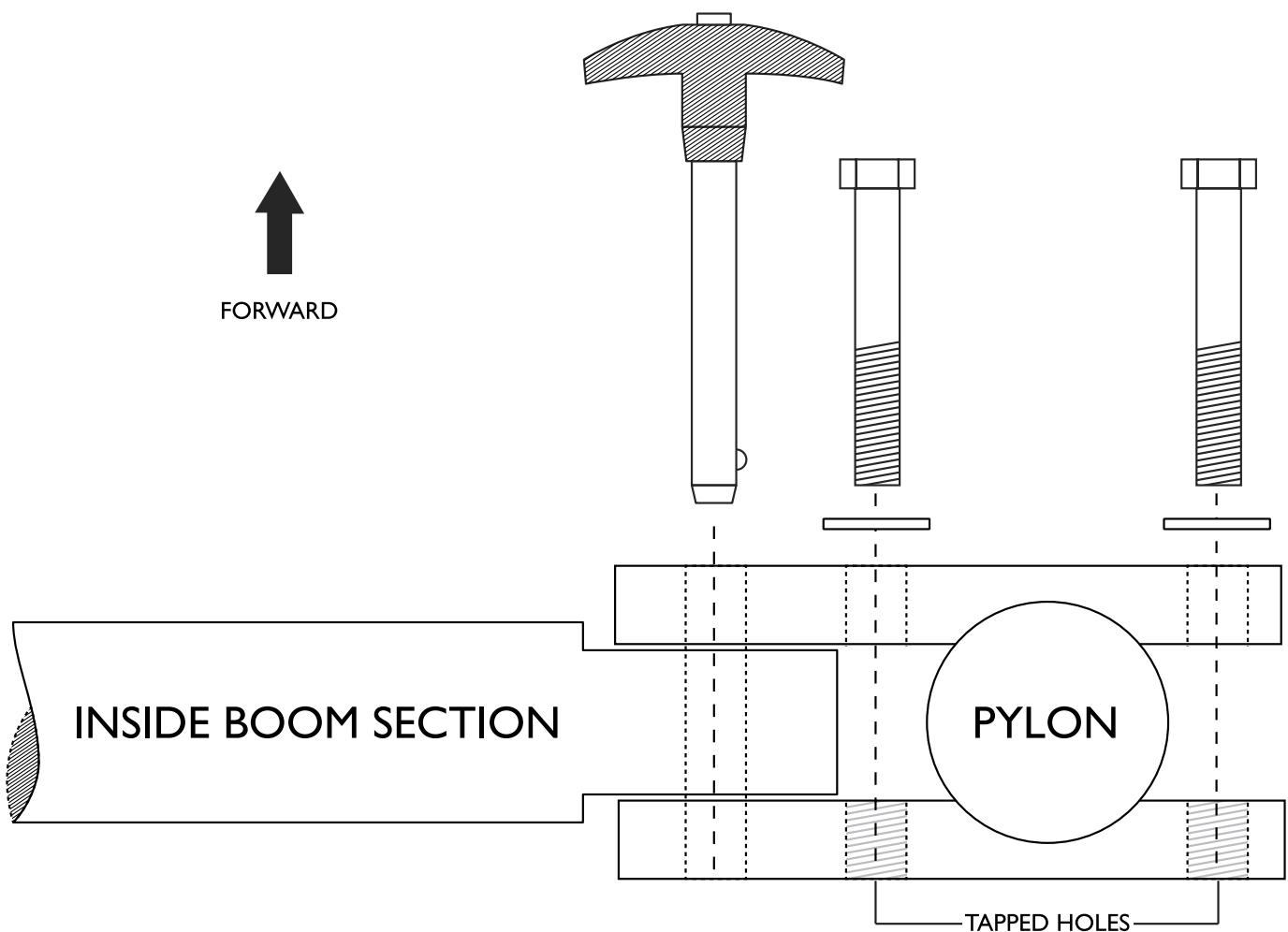
**NOTE- For the next step, the cables must have no slack hanging down.**

8- Pull any slack out of the cables until they are snug. Make sure the cable loop at the end is approximately 1½"-2" in diameter. Tighten all 8 set screws on the cable clamp with provided allen wrench. Be sure you tighten them until they are extremely tight.

9- Slide the cable pad over the cables and connect loop strap through the carabineer. Tuck any excess cable back into the cable pad.

**TO REMOVE THE BOOM: SIMPLY UNHOOK THE CABLES FROM THE BOAT, REMOVE THE OUTSIDE SECTION, AND REMOVE THE INSIDE SECTION USING THE QUICK RELEASE PIN.**

**THE CLAMP CAN REMAIN ON THE PYLON WHILE THE BOOM IS NOT BEING USED.**



**YOU MUST CHECK ALL 8 SET SCREWS PRIOR TO EACH USE TO ENSURE THAT THEY ARE TIGHT. FAILURE TO DO SO COULD RESULT IN DAMAGE TO EQUIPMENT OR PERSONAL INJURY**

# BOOM ACCESSORIES



## A. Boom Bag

Constructed of 1000 Denier Cordura Nylon with PVC coating using heavy duty nylon webbing for handles. This bag allows you to store or transfer your boom while protecting it.

## B. Cable Pad

This pad protects the hull of your boat from being damaged by the cable and cable clamp.

## C. Boom Pad

You won't injure your knees and shins on the inside section of the boom.

## D. Quick Release Pin

A simple press of a button allows you to install and remove the pin from the boom clamp without sacrificing safety. Also works with the boom height adjuster.

## E. Boom Height Adjuster

Adjust the height of your boom with this height adjuster. There are five different adjustment points, and a quick release pin makes it easy to change.

## F. Boom Extension

This extension installs quickly and helps move the skier out of the spray from the boat.

## G. Gunnel Saver

Keeps the gunnel of the boat from getting damaged by the boom. It spreads the pressure of the boom over a larger area on the gunnel, eliminating stress on the fiberglass.

## H. Boom Handle Attachment

This accessory has become popular for all ages. The smaller diameter of the handle is great for younger skiers, offering a better grip.