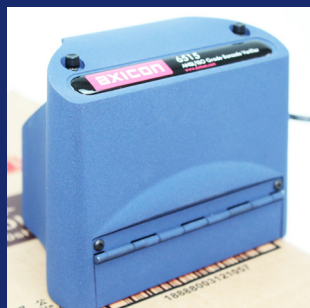
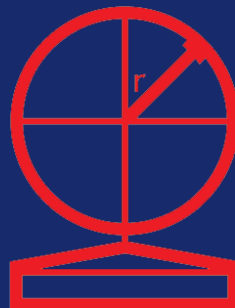
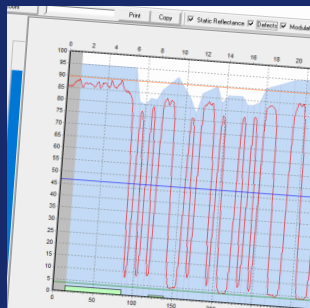




| Summary | |
|------------------------------|------------------------------|
| EAN-13 012345678900 | |
| Grade (Pass=1.5) | Average 3.6/06/660 |
| Average Bar Gain (tolerance) | 7% (±30) |
| Magnification | 0.013" (10) |
| Check Character | OK (0) |
| Structure | 1.1 |
| Left Margin | 1.1 |
| Right Margin | 1.1 |
| Aperture | |
| Date & Time | 29/08/2019 15:51:47 |
| Reader Info | \$5093 (v0301) Resolution=75 |



| Verification Scan | | 539477297209128 | |
|---------------------|--------------------|-----------------|---------|
| all Grade | OVERALL | B (3.3) | Average |
| Reflectance | RMIn | A (4.0) | |
| Contrast | RMMax | | |
| Modulation | Threshold | | |
| Defects | Reflectance Margin | B (3.3) | |
| Decodability | Symbol Contrast | A (4.0) | |
| Decodes | Edge Contrast | A (4.0) | |
| | Modulation | A (4.0) | |
| | Defects | A (4.0) | |
| | Decodability | A (4.0) | |



6500 series linear barcode verifier



THE BARCODE EXPERTS

Features

Verification for point of sale and outer case barcodes

ISO/IEC (ANSI) compliant verification

GS1 specifications

USB powered

Lightweight and portable

Two year warranty

Results are immediately displayed on screen, and reports can be printed or e-mailed for remote diagnosis. Reports may be saved automatically to support ISO 9001 quality control procedures. Simple user-friendly calibration, and configuration of how results are displayed. This verifier is perfect for product manufacturers, label printers, printers and packagers, and pre-press studios. It is widely used by major retailers worldwide.



Approved



Axicon 6515

Mid range barcode verifier

The Axicon 6515 barcode verifier has been designed to read linear barcodes with a width of up to 4.92" (125mm) including quiet zones. This means only one verifier is needed to check all your GS1 barcodes – EAN/UPC, ITF-14 and GS1-128 – if the outer case and logistics label barcodes are not at their maximum size.



Axicon 6525-S

High speed mid range barcode verifier

The 'S' range of Axicon verifiers has a continuous scan feature, which means that obtaining at least ten different readings throughout the height of the barcode (as required by ISO/IEC) is much faster. Simply place the verifier slightly above or below the barcode, press the trigger and slide the verifier over the code – in less than a second you can have results of up to 100 scans of the code at different points in the bar height.



Symbologies verified



Plus: Codabar, ITF, MSI Plessey and more...

Aperture reference

The software automatically identifies the symbology and its bar width (x-dimension) and adjusts the aperture size to comply with the symbology specifications and relevant ISO/IEC standard.

Free licence software

The verifier will analyse according to ISO/IEC 15416.

In addition the software can also check applications, such as:

GS1 General Specifications

Data content checking

Job Reference

ISBN barcodes

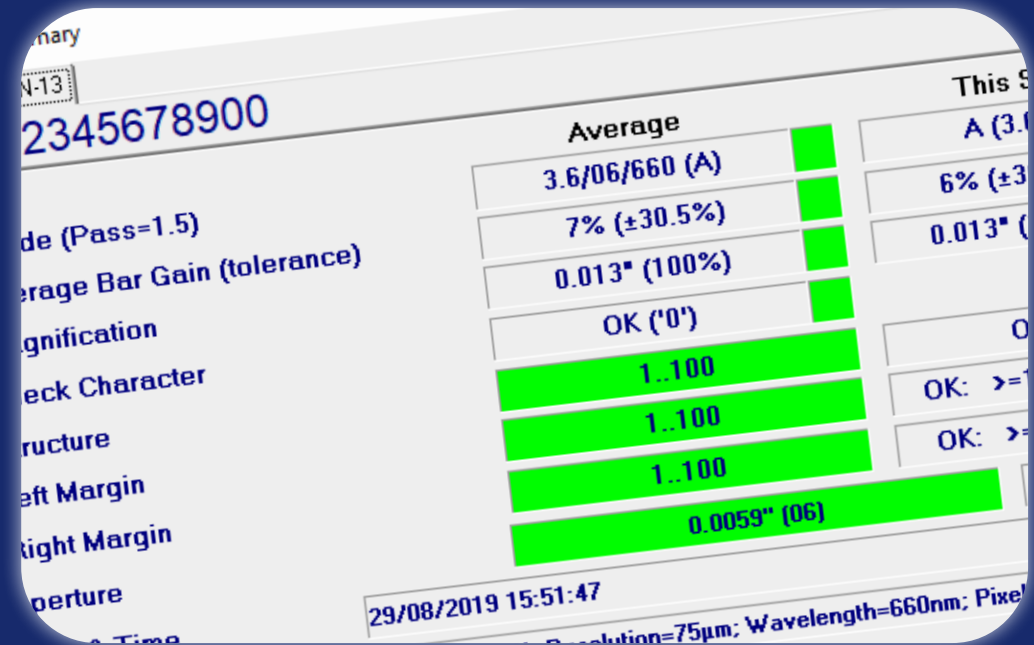
Product Lookup

Coupon codes

HIBC

Instore

And more....



Reporting / Saving

Verification reports can be saved in various formats including:

- PDF
- HTML
- CSV
- TXT

Reports will include all ISO verification parameter grades in ISO/ANSI format.

| | | |
|-------------------------------|-------------------|----------------|
| Average Grade (Pass=1.5): | C (2.2) | |
| Average Bar Gain (tolerance): | 12% (± 33.0%) | |
| Check Character: | OK (43) | |
| | Pass Scans | Fail Scans |
| Structure | 1..10 | |
| Left Margin | 1..10 | |
| Right Margin | 1..10 | |
| | Percentage Values | Average Grades |
| Minimum Reflectance | 15% | A (4.0) |
| Maximum Reflectance | 85% | A (4.0) |
| Threshold | 69% | A (4.0) |
| Symbol Contrast | 53% | A (4.0) |
| Min. Edge Contrast | 76% | A (4.0) |
| Modulation | 4% | C (2.2) |
| Defects | 39% | A (4.0) |
| Decodability | | |
| Decode | | |

21 CFR part 11



Auto saving of reports and user permission controls features enable 21 CFR part 11 compliance.

IQ / OQ / PQ



Installation, operational and performance qualification available. Comprises documentation, results forms and performance test cards.



Software languages available

English

French (Français)

Spanish (Español)

Dutch (Nederlands)

Chinese (中文)
Simplified | Traditional

German (Deutsch)

Czech (Čeština)

Japanese (日本人)

Polish (Polski)

Italian (Italiano)

Korean (한국어)

Danish (Dansk)

Thailand (ไทย)

Hardware specifications

| | |
|----------------------|---|
| Dimensions | 145 x 113 x 128mm (5.7"x 4.4" x 5.0") |
| Weight | 675g (23.8 oz) |
| Construction | ABS plastic, CCD sensor, LED illumination |
| IP Options | Available with IP50 (60529) rated protection. |
| Power consumption | Current draw 150mA at 5v – supplied from USB-2 host |
| Wavelength of light | 660 nm (red) |
| Calibration | N.I.S.T. traceable calibration card with certificate included |
| Carry case | Supplied for transport and storage |
| Environmental | Operating temperature: 10° to 40°C - Storage temperature: -20° to 70°C Relative humidity: 25% to 80% @ 40°C non-condensing |
| Regulatory approvals | CE certified, RoHS compliant |



Contact



Inquiries:

Order Barcodes, Inc.

Email: orders@orderbarcodes.com