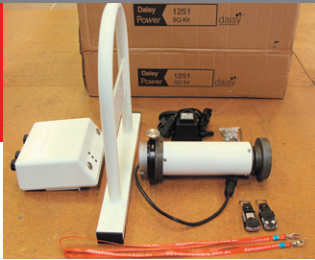
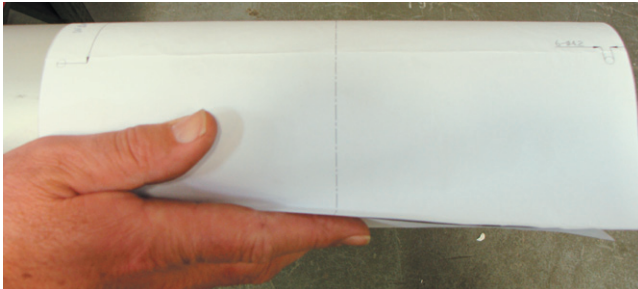


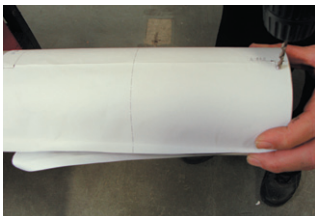
Installation Instructions



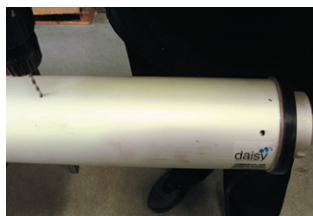
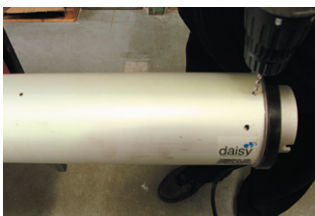
daisy  P O W E R



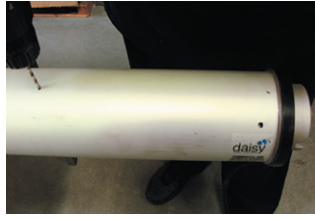
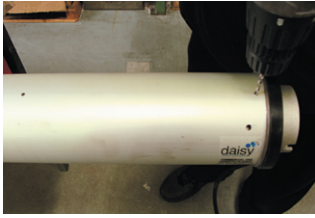
1. Wrap paper template around roller tube, the end you want to install the Daisy Power motor and controls



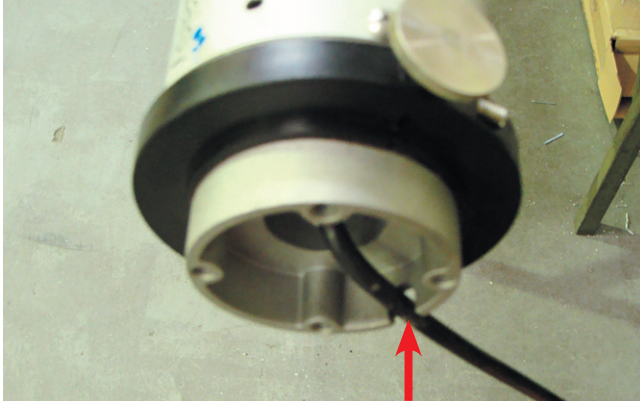
2. Without the drive motor inside the tube, mark and drill the 6 x 4.5mm holes through the template with the 4.5mm drill bit (3 around the end of the tube and 3 around the inside of the tube approximately 243mm from end of tube)



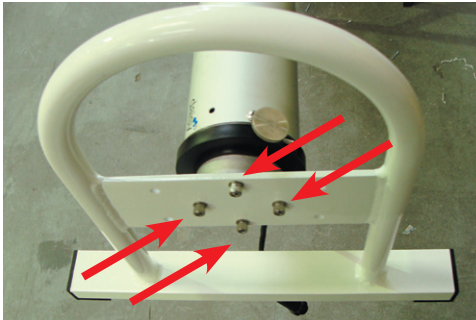
3. Insert the drive motor, (if there is a feather plug in way, remove, then replace after motor install) then using the 4.5mm drill again, drill through the 6 holes in the tube, through the drive motor flange



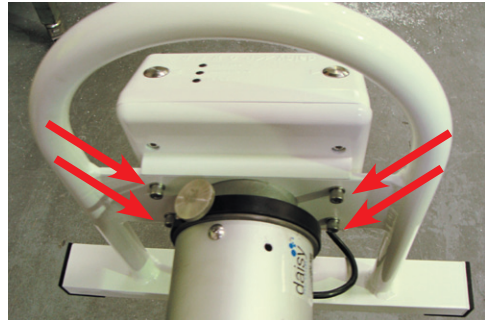
4. Insert and tighten the 6 x mounting screws



5. Ensure drive motor wire is running through the recess in the housing on the end



6. Install the end frame, secure firmly 4 x mounting bolts



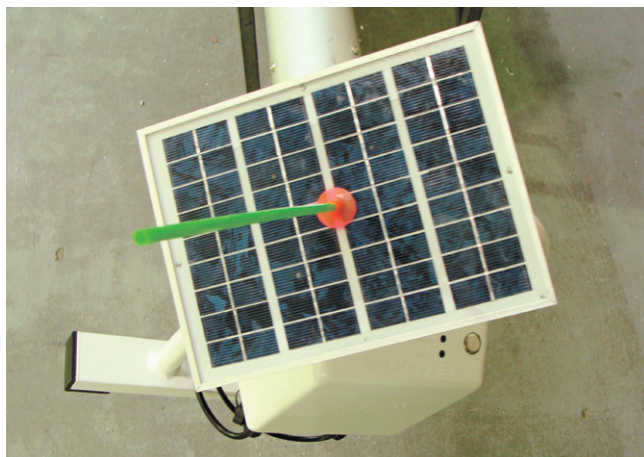
7. Install the control housing, secure firmly the 4 x mounting bolts



8. Plug in the drive motor wire to the connector socket on the underside of the control housing
Note: each connector socket has labels for the correct appliance



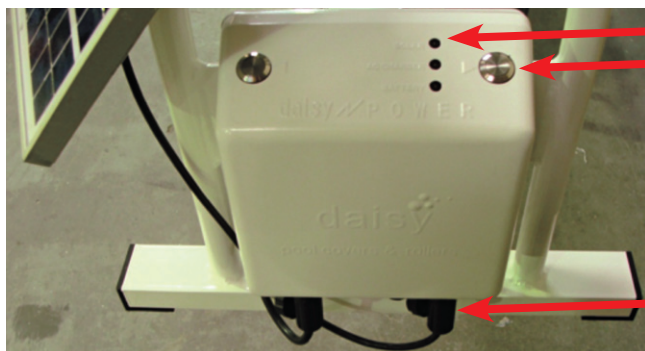
9. If you have a solar panel, clamp the panel to the drive motor end frame and plug into "Solar" connector socket on the underside of the control housing



10. Adjust the solar panel position by placing the shadow indicator in the centre of the solar panel, at midday adjust the position of the solar panel so there is minimal shade from the indicator. This will ensure the optimum solar panel position for your location

11. Plug in AC Charger to fully charge battery before first operation.

OPERATION



Indicator Lights

Directional Control Button

Connector Sockets

Indicator light meaning:

SOLAR LED

Green = sufficient PV power available to charge battery
 Green flickering red = charging from PV (the more it's charging the longer the red is, very slow red flick means nearly fully charged)
 (Note: There is a keep alive function that will keep unit operational even in the shade without the indicator light illuminating)

AC CHARGER LED

Green = available

Green flickering red = charging from AC (the more it's charging the longer the red is, very slow red flick means nearly fully charged)

BATTERY LED

Green = battery fully charged

Orange= intermediate (mostly charged)

Red = needs recharge. (less than 25% charge in battery)

Best indication of the battery condition is just after an operation (pressing a button)

Battery condition light only illuminates when:

1. PV (solar panel) available or
2. AC available or
3. During and immediately after operation (for approximately 60 seconds after operation ceases)

Note: if there is marginal PV available (e.g. cloud coverage) then the battery indicator light may come up orange even though battery is fully charged

Note: when motor is operating, the battery LED will show red as it's loading the battery and drawing the power.

Forward and reverse buttons control the drive motor direction

Remote control operation is the same operation as the buttons on the control housing. Control button and remote button will only operate the motor while the button is being pressed

Ensure the AC charger pack is not exposed to water or weather. Plug in AC charger into the AC Charger connection to re charge battery

Regularly check tension of all screws and mounting bolts

To free wheel the roller tube, disengage the motor drive by lifting the locking pin – lift up to free wheel (rocking the tube back or forward may be required to take the weight off the pin to disengage)

For best operation, the pool cover should be cut to water line or less

Ensure the cover has no folds or any obstruction to catch on when rolling up

Tip for larger pools: to make it easier to put the cover back onto the pool, disengage the drive motor then push the deploy button on the remote as you are pulling the cover back onto the pool from one side

Contact Details

sales@daisypoolcovers.com.au

Phone 1300 551 811

Page 4 | www.daisypoolcovers.com.au



Lift Pin (pull up)