

Crosscool

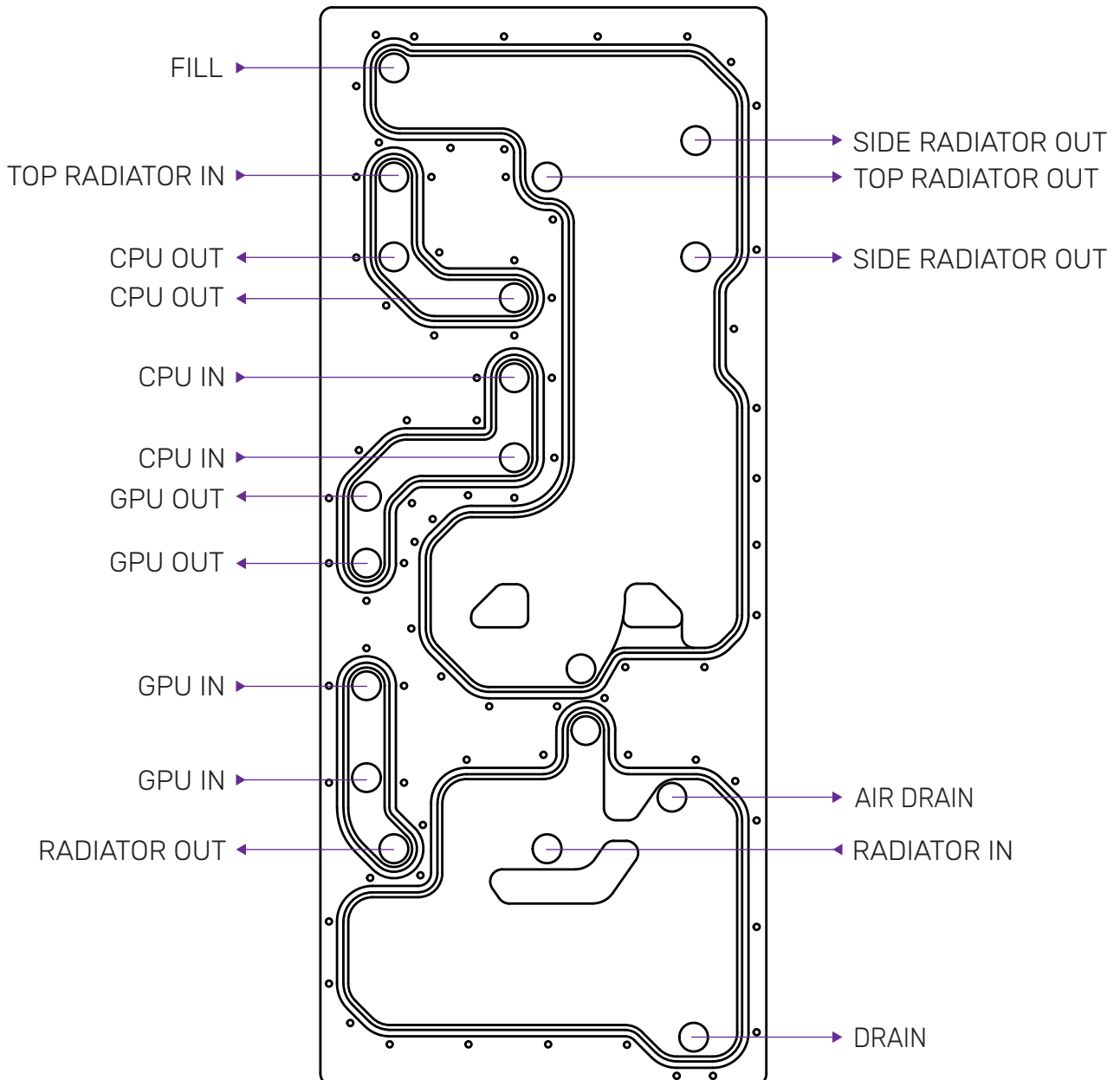
HIGH QUALITY  
MADE IN GERMANY

**1. PREPARATION - WATER LOOP PLANNING**

Have a look at the port overview and plan your water loop accordingly. The CPU and GPU are connected in parallel.

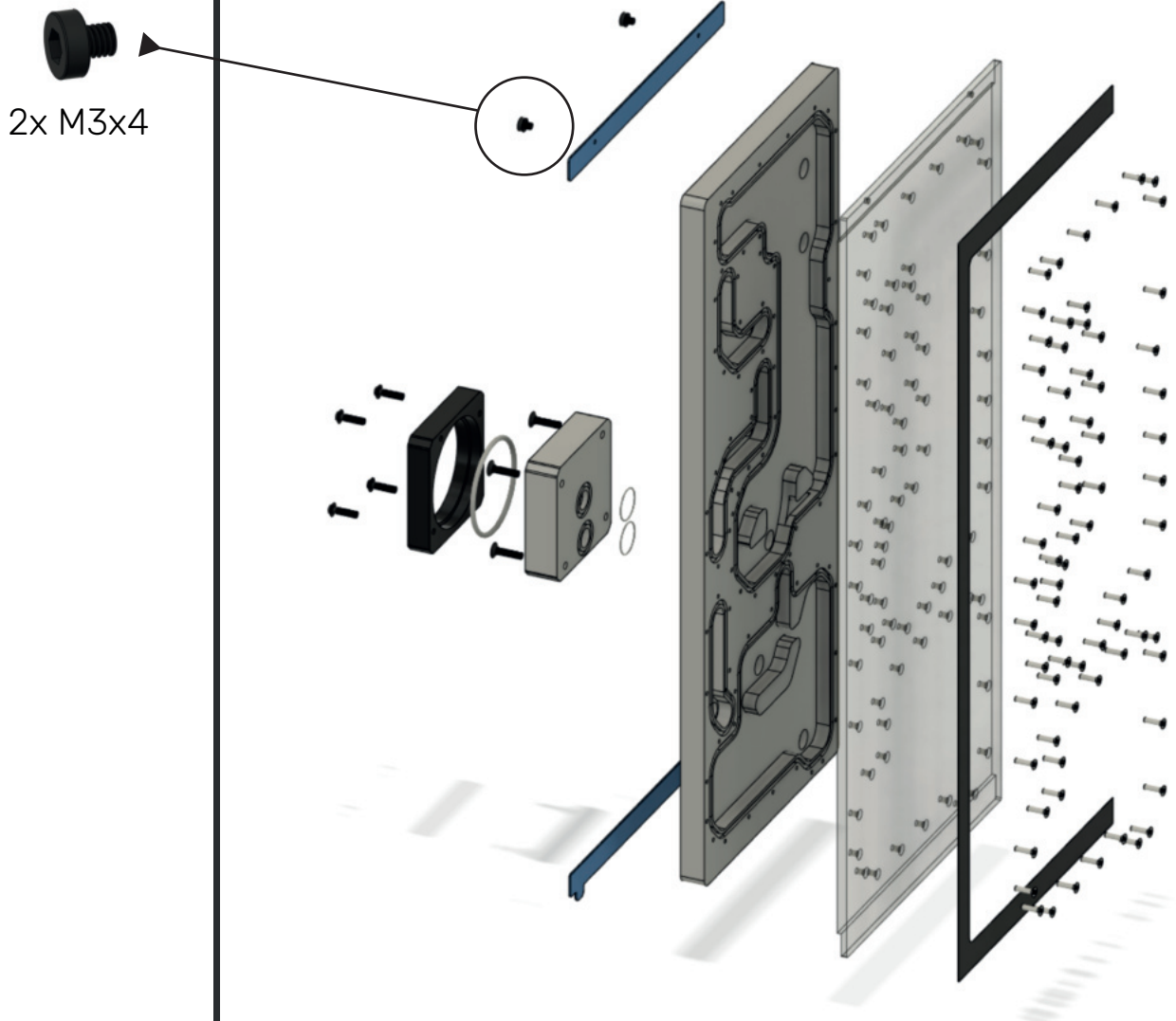
Make sure to use the correct in and out ports for the CPU and GPU.

Additional stop settings are provided if only the CPU or GPU ports are used.



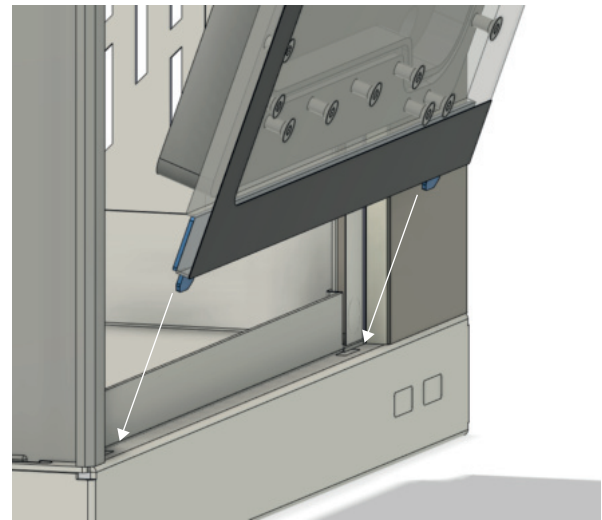
**2. PACKAGE CONTENTS**

**WARNING** - This product is intended for advanced users. Improper installation may result in damage to your equipment. While all efforts have been made to provide the most comprehensive information possible, Stealkey Customs assumes no liability expressed or implied for any damage(s) occurring to your components as a result of using Stealkey Customs cooling products, either due to mistake or omission on our part in the below instructions, or due to failure or defect in the Stealkey Customs cooling products. Do not disassemble the water block. Warranty will be voided. Turn off the power to your system and discharge your body's static electric charge before proceeding with the installation procedure. If you do not feel comfortable with performing the installation procedure, consult a qualified computer technician.

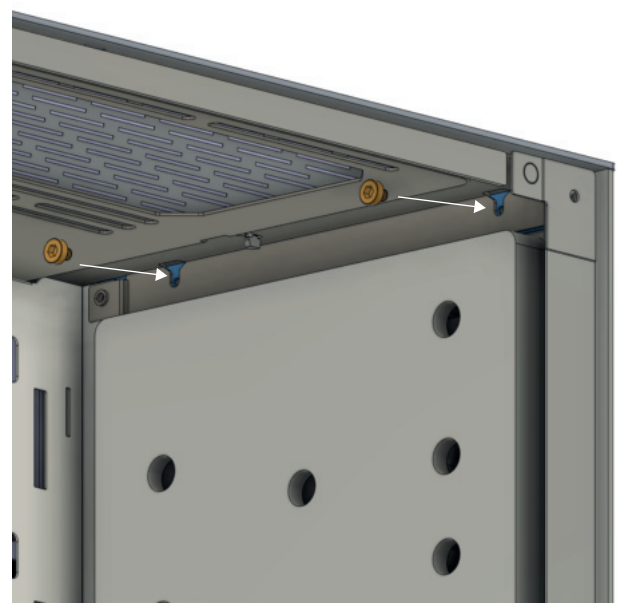
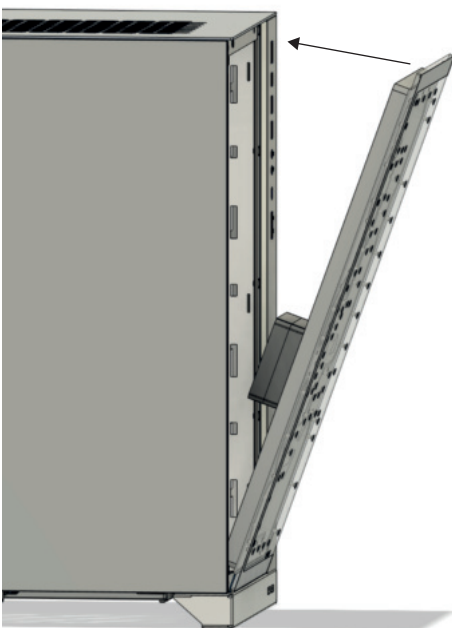
**Mounting screws**
**Distroplate „Crosscool“**


### 3. INSTALL THE DISTRIBUTION PLATE

**Step 1:** The distroplate is equipped with two steel bars. First, the lower steel strip is inserted into the holes provided.



**Step 2:** Now the distroplate is pressed onto the case and fastened with two screws. (Max 3-5 N/m).



#### 4. INSTALLING FITTINGS

Install G1/4 threaded male settings and close the remaining ports with Stop Fittings.

Always perform a leak test before providing power to any system components (Max pressure of 0,5 bar).

Align the screw positions.

Carefully loosen the fill port stop fitting to let trapped air bleed out.

#### 5. CLEANING & CARE

Clean the Distribution Plate only with microfibre cloths to avoid scratching the material.

Do not use alcohol-based cleaners to avoid stress cracks in the material.

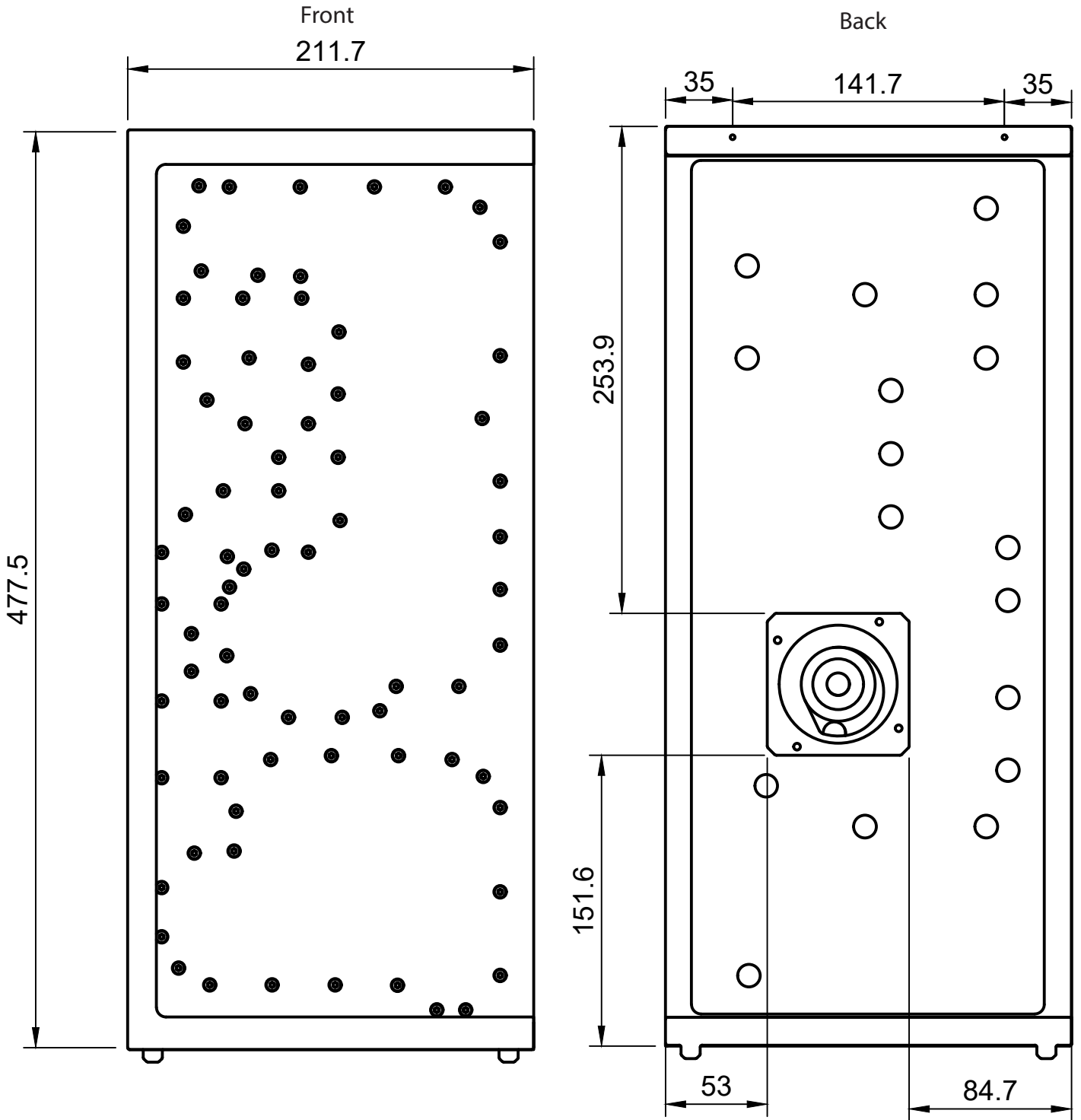
Before installing the Distribution Plate, it is recommended to flush the distroplate to remove the last residues.

Acrylic paints can leave residues.



**6. RESERVOIR DIMENSIONS**

Specifications are in mm.



**6. RESERVOIR DIMENSIONS**

Specifications are in mm.

