



HIGH QUALITY

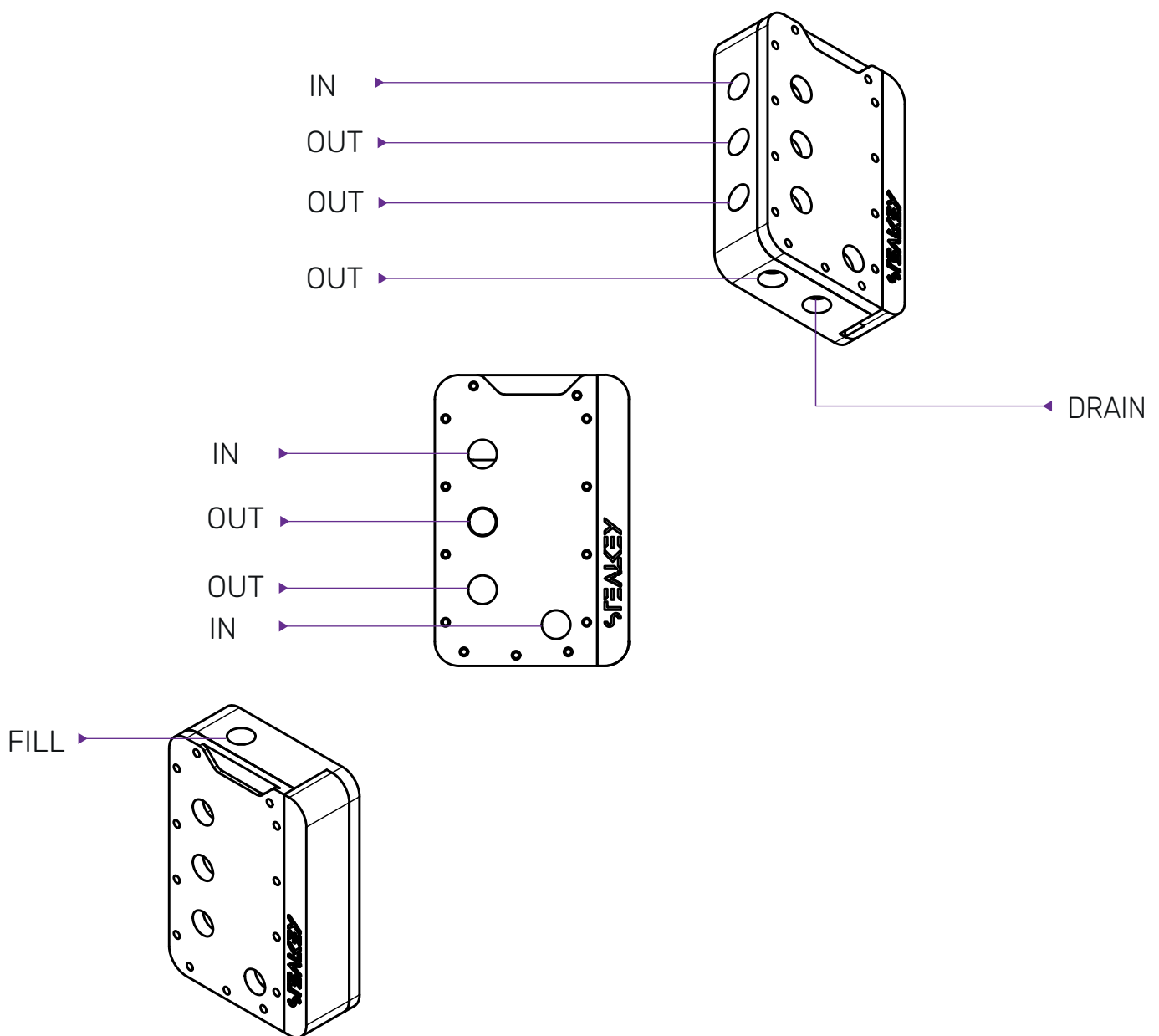
MADE IN GERMANY



1. PREPARATION - PLANNING THE WATER CIRCUIT

Take a look at the connection overview and plan your water circuit accordingly.


The UNI 80 offers three inlet and five outlet ports, one of each must be used!



2. PACKAGE CONTENTS

WARNING - This product is intended for advanced users. Improper installation may result in damage to your equipment. While all efforts have been made to provide the most comprehensive information possible, Stealkey Customs assumes no liability expressed or implied for any damage(s) occurring to your components as a result of using Stealkey Customs cooling products, either due to mistake or omission on our part in the below instructions, or due to failure or defect in the Stealkey Customs cooling products. Do not disassemble the water block. Warranty will be voided. Turn on the power to your system and discharge your body's static electric charge before proceeding with the installation procedure. If you do not feel comfortable with performing the installation procedure, consult a qualified computer technician.

Mounting screws



8x M3 4x M3



8x M3

8x SK STOP PLUG
G1/4 AG
SCHWARZ/BLACK

RGB Cable

1x D-RGB 3pin
(500mm cable)

Spacer



2x Spacer (hole
spacing 105mm)

UNI 80

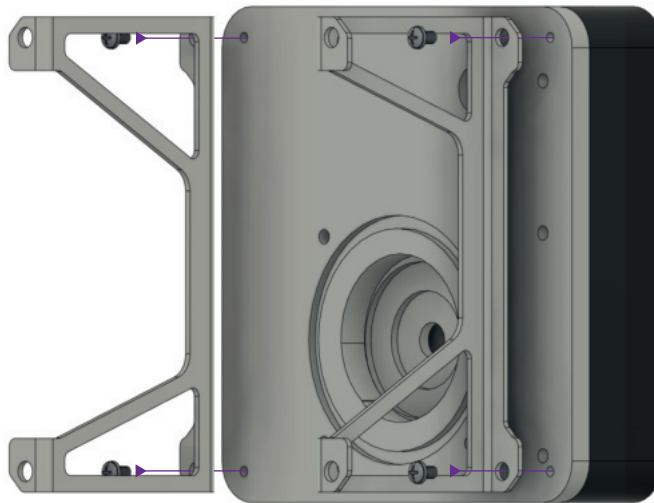




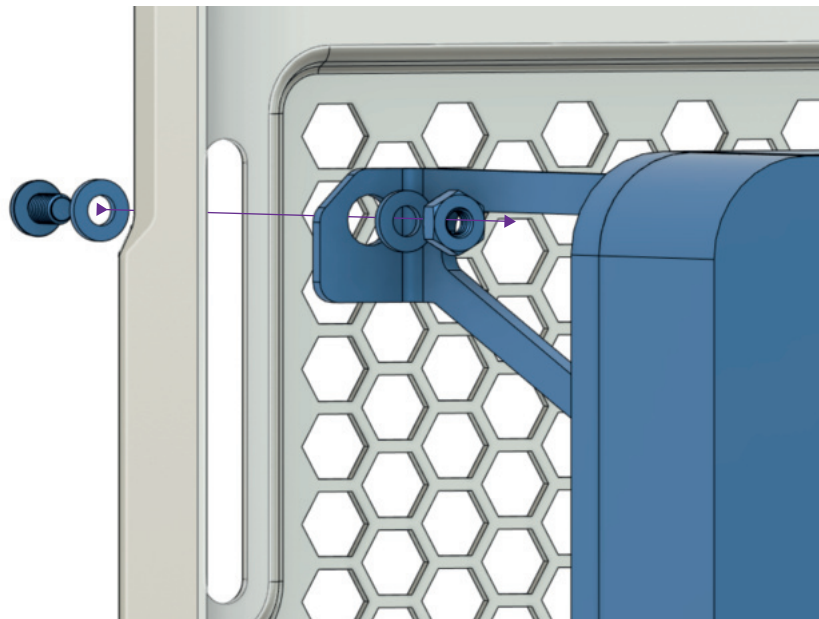
3. INSTALL THE RESERVOIR

Step 1: Install the spacers with the M3 screws on the back of the reservoir. Do not overtighten the screws (maximum 3-5 N/m).

*picture is shown the UNI 120



Step 2: Attach the reservoir to the I/O fan grille of the case. Use the M3 washers & screws.





4. CONNECT THE D-RGB CABLE

Connect the D-RGB Cable to a compatible motherboard.

5. INSTALLING FITTINGS

Install G1/4 threaded male settings and close the remaining ports with Stop Fittings.

Always perform a leak test before providing power to any system components (Max pressure of 0,5 bar).

Align the screw positions.

Carefully loosen the fill port stop fitting to let trapped air bleed out.

6. CLEANING & CARE

Clean the reservoir only with microfibre cloths to avoid scratching the material.

Do not use alcohol-based cleaners to avoid stress cracks in the material.

Before installing the reservoir, it is recommended to flush the reservoir to remove the last residues.

Acrylic paints can leave residues.


7. RESERVOIR DIMENSIONS

Specifications are in mm.

