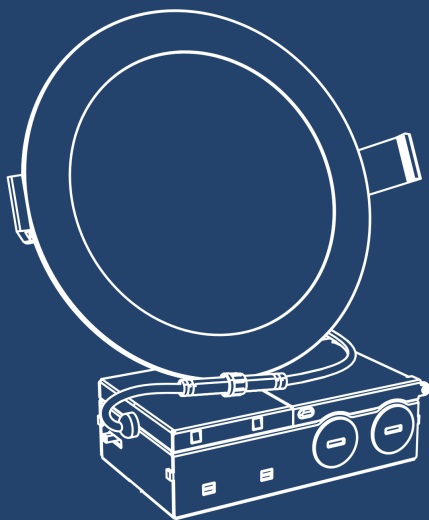




6" SLIM 5CCT DOWNLIGHT

■ User Manual



GET MORE SUPPORT

Should you experience any issues while operating any of our products, you can directly reach out to our Customer Support via Amazon Orders Or you can send your inquiry to our Official Customer Support at:

 support@amicolight.com

 +1(626)313-9318

Monday - Friday from 9:00AM - 5:00PM (PT)

01 30-Day Return Policy

If you're not completely satisfied with your purchase, simply return the merchandise via Amazon Orders.

Unused merchandise can be refunded or exchanged within 30 days from the original purchase date.

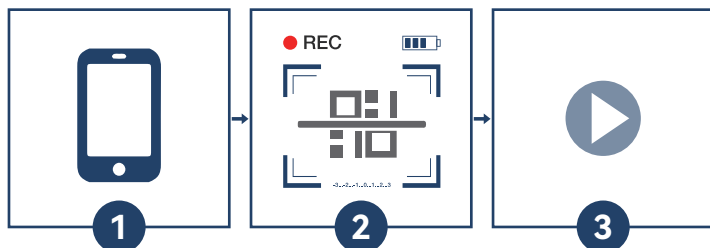
02 5-Year Warranty

We guarantee your product is free from defects in product material and workmanship for five (5) year starting from the date of purchase during normal use of household conditions. If your appliance fails to operate properly within our warranty period, we will arrange a new replacement free of charge and cover all the shipping costs.

03 Quick Response within 12 Hours

If you are still unable to resolve the issue you are experiencing, please contact us immediately at our support email. It doesn't matter if the product has been installed, our customer support team will respond within 12 hours and assist you quickly and efficiently.

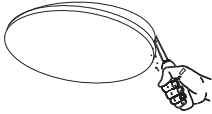
The most efficient way to confirm your problem to us is to attach a video illustrating your product issue.



Need a Video Instruction Guide?
Please scan the QR code.

If the QR code is invalid, please contact us for the video.

1-3

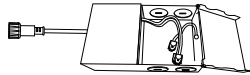


- 1 Install the drywall directly over the rough-in paper. NOTE: It is suggested to use your own method in locating the center of the aperture hole.
- 2 Select your desired method of cutting either using a hand saw or hole saw to cut an opening in the ceiling by using the provided template.
- 3 After selecting the desired method of cutting, cut out a 6.33" diameter hole in the mounting surface.

CAUTION:

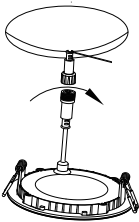
Do NOT cut a hole that exceeds or that is larger than the paper opening.

4-5



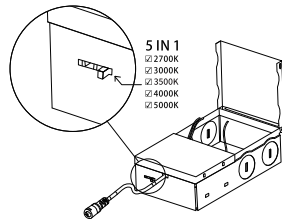
- 4 Make sure all POWER IS TURNED OFF at the electrical source to the location in which you are mounting the luminaire.
- 5 Remove the cover of the provided J-BOX and insert wire nuts to make connections with power supply. Insert splices in J-BOX before concealing the cover.

6



- 6 Connect the J-BOX to the light module.

7



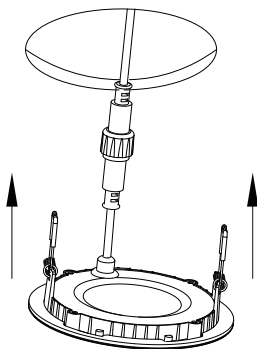
- 7 Turn on the power and slide the CCT Selection Switch to test the light.

BEFORE INSTALLATION:

On the back of the J-BOX, slide the CCT Selection Switch and choose from five available color temperatures: 2,700K; 3,000K; 3,500K; 4,000K; and 5,000K.

- Test results from each CCT Selection to determine which brightness level suits your room best.
- The light will use the preferred setting whenever you turn on the switch.
- Turn off the light switch and continue with the installation.

8-9



- 8 Place the J-BOX through the cut-out hole and mount according to your local electrical code compliance.
- 9 Rotate and hold both spring clips upward to allow passage through the cut-out in the ceiling.

Continue to press the light module through the cut-out hole until it is securely fixed and flushed with the ceiling.

WARNING

- DO NOT turn on the switch until the light panel is properly connected to the junction box. Failure to turn on without securing the light panel and the J-BOX may result in PRODUCT DAMAGE and/or ELECTRIC SHOCK.
- RISK OF FIRE OR ELECTRIC SHOCK
CONSULT WITH A QUALIFIED ELECTRICIAN TO ENSURE THE CORRECT BRANCH CI CONDUCTOR.
- RISK OF FIRE HAZARD MIN 90°C SUPPLY CONDUCTORS.
- DO NOT make or alter any open holes in an enclosure of wiring or electrical components during kit installation.
- To prevent wiring damage, puncture or abrasion, do not expose wiring to edges of sheet metal or other sharp objects.

SPECIFICATIONS

Voltage	120V
Wattage	12W
lumen	1050LM
Suitable for Locations Ingress	Wet location
Housing	Aluminum
Weight	0.86lbs
Warranty	5 years

PROBLEMS AND COUNTERMEASURES

PROBLEM	PROBABLE CAUSE	SOLUTION
Unlit	The wire falls off/loosens/breaks	Check that the wires are well connected
	The power switch is not turned on	Ensure that the power switch is on
	Voltage is too high, product is damaged	Ensure that the voltage is 120V
	None of the above	Reach out to our Customer Support
Dim	Incompatible dimmer	Check and choose a dimmer from the recommended dimmer list
	Not setting the dimmer right	Check dimmer Settings
	Too many lights are connected to one dimmer	Total Power Of the Lights ≤ 75% of the Rated Power of the Dimmer
	The brightness of lighting is too low	Install more lights and recommended spacing for installation of 4" lights: 2-4ft, & 6" lights: 5-7ft
	The brightness of lighting is too high	Lower the dimmer or reduce the number of lights at the same time
	Mix the junction boxes (4" and 6")	Check if the junction box matches
	The product is not installed in place	Check the product installation steps to ensure that the springs and other parts are normal
	None of the above	Reach out to our Customer Support
Flickering	The wire falls off/loosens/breaks	Check that the wires are well connected
	Incompatible dimmer	Check and choose a dimmer from the recommended dimmer list
	Too many lights are connected to one dimmer	Total Power Of the Lights ≤ 75% of the Rated Power of the Dimmer
	High-power electrical appliances on the same circuit	Reduce the number of lights at the same time
	Voltage is too low	Check the circuit voltage to make sure the voltage is 120V
	None of the above	Reach out to our Customer Support
Overheating	Too many lights are connected to one dimmer	Total Power Of the Lights ≤ 75% of the Rated Power of the Dimmer
	None of the above	Reach out to our Customer Support

Brand	Model	Star Rating
LUTRON	GT-600P	★ ★ ★ ★ ↘
	TGCL-153P	★ ★ ★ ★ ↘
	DVCL-153P	★ ★ ★ ★ ↘
	MSCL-OP153M	★ ★ ★ ★ ↘
	PD-6WCL	★ ★ ★ ★ ↘
	MACL-153M//MA-R	★ ★ ★ ★ ↘
	DVWCL-153PH-WH	★ ★ ★ ★ ↘
	MACL-153M-LA	★ ★ ★ ★ ↘
	DVCL-153P-GR	★ ★ ★ ★ ↘
	SCL-153P-WH	★ ★ ★ ★ ↘
	CBLD001WH	★ ★ ★ ★
	TG-600PR-WH	★ ★ ★ ★
	S-600PR-WH	★ ★ ★ ★ ↘
	CTCL-153PDH-WH	★ ★ ★ ★ ↘
	TGCL-153PH-LA	★ ★ ★ ★
	SLV-600P-AL	★ ★ ★ ★
DV-600PR-WH	★ ★ ★ ★ ↘	
SCL-153PH-WH	★ ★ ★ ★	
LEVITON	RNL06	★ ★ ★ ★ ↘
	IPL06	★ ★ ★ ★ ↘
	DSL06	★ ★ ★ ★ ↘
	6674	★ ★ ★ ★
	6674-P0E	★ ★ ★ ★
	6672	★ ★ ★ ★ ↘
	SELV-300P-WH	★ ★ ★ ★
VPI06-1LZ	★ ★ ★ ★	
LEGRAND	ADTP70TU	★ ★ ★

After Sales Service

1. Please stop using the product immediately if the product shows any visible defect and contact customer service.
2. If there is any problem with the recessed lighting for non-human reasons, please reach out to customer support. We will send you a brand-new replacement without the need of returning the original product or a full refund.
3. If you are not completely satisfied with the product after installation but prefer not to disassemble, get in touch with our customer support right away and we provide comparable compensations.



GET MORE SUPPORT

Should you experience any issues while operating any of our products, you can directly reach out to our Customer Support via Amazon Orders.

Or you can send your inquiry to our Official Customer Support at:

 support@amicolight.com

 +1(626)313-9318 Monday - Friday from 9:00AM - 5:00PM (PT)

MADE IN CHINA