



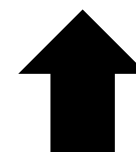
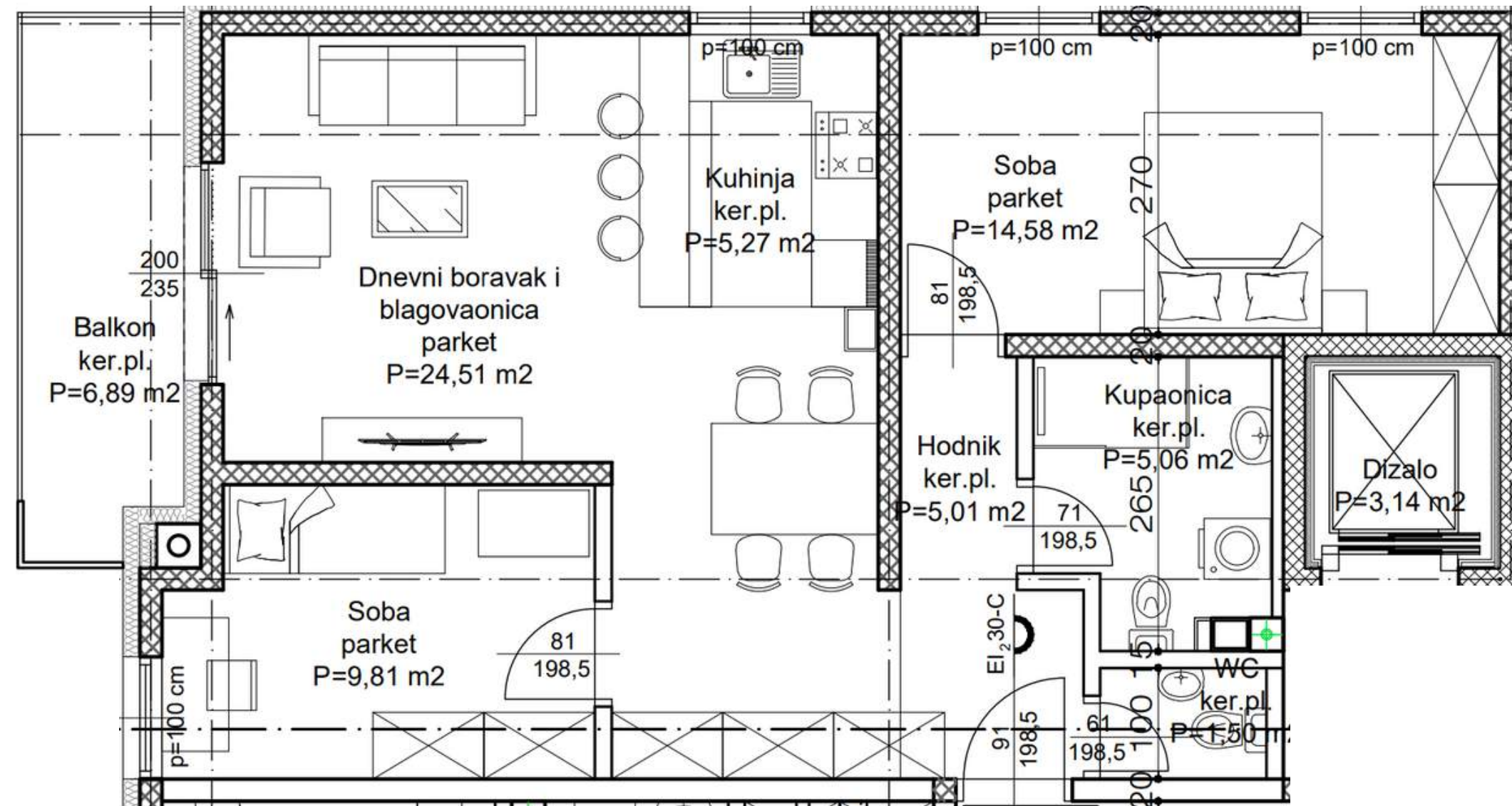




ORIJENTACIJA



#ID1 #ID11 #ID21

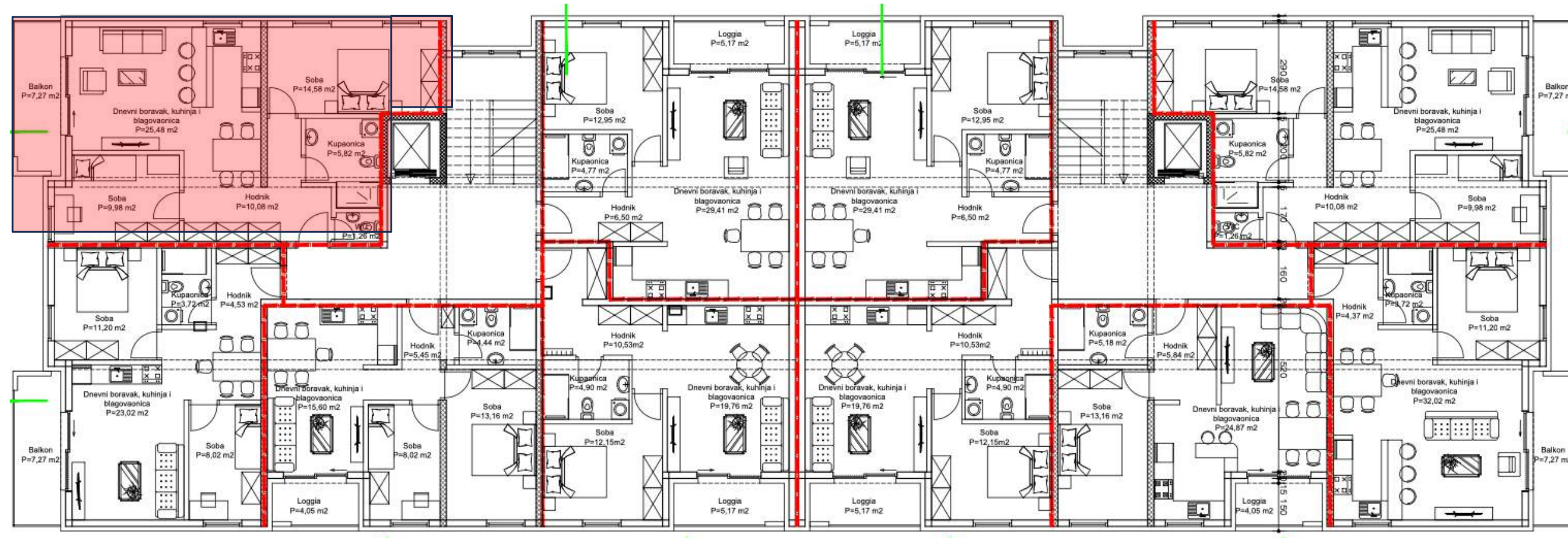




## ORIJENTACIJA



#ID1 #ID11 #ID21



1. Hodnik	5,01 m <sup>2</sup>
2. WC	1,50 m <sup>2</sup>
3. Kupaonica	5,06 m <sup>2</sup>
4. Soba	14,58 m <sup>2</sup>
5. Dnevni boravak i blagovaonica	24,51 m <sup>2</sup>
6. Kuhinja	5,27 m <sup>2</sup>
7. Soba	9,81 m <sup>2</sup>
8. Balkon natkriveni 6,89×0,50	3,45 m <sup>2</sup>
<hr/>	
UKUPNO :	69,19 m <sup>2</sup>

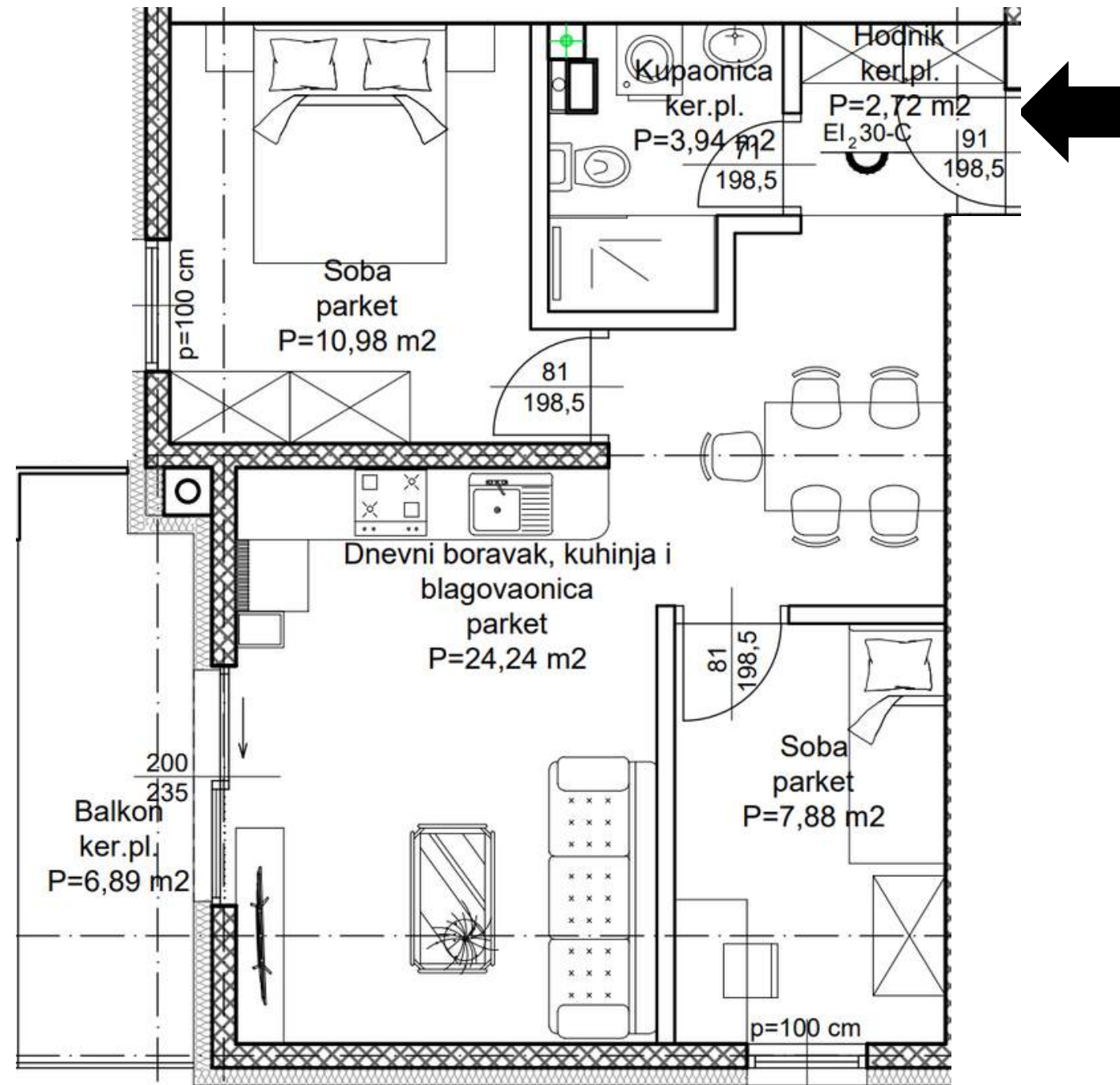




ORIJENTACIJA



#ID2 #ID12 #ID22

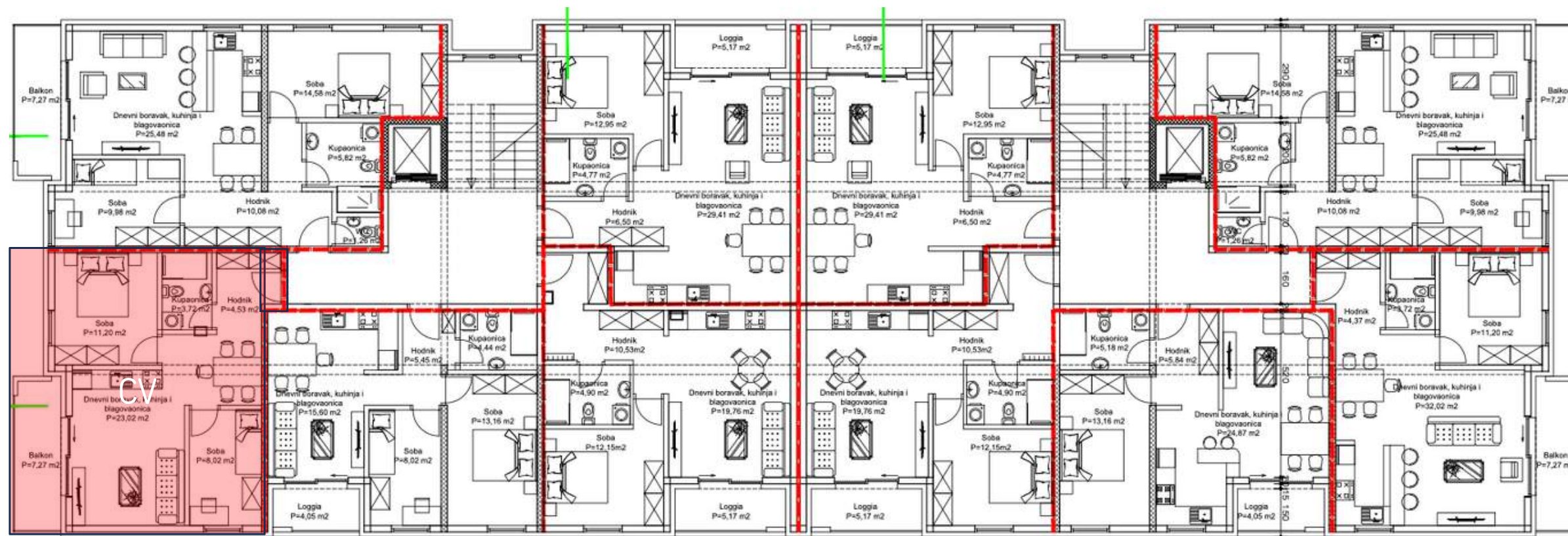




# ORIJENTACIJA



#ID2 #ID12 #ID22



1. Hodnik	2,72 m <sup>2</sup>
2. Kupaonica	3,94 m <sup>2</sup>
3. Soba	10,98 m <sup>2</sup>
4. Dnevni boravak, kuhinja i blagovaonica	24,24 m <sup>2</sup>
5. Soba	7,88 m <sup>2</sup>
6. Balkon natkriveni 6,89×0,50	3,45 m <sup>2</sup>

-----  
UKUPNO : 53,21 m<sup>2</sup> ;

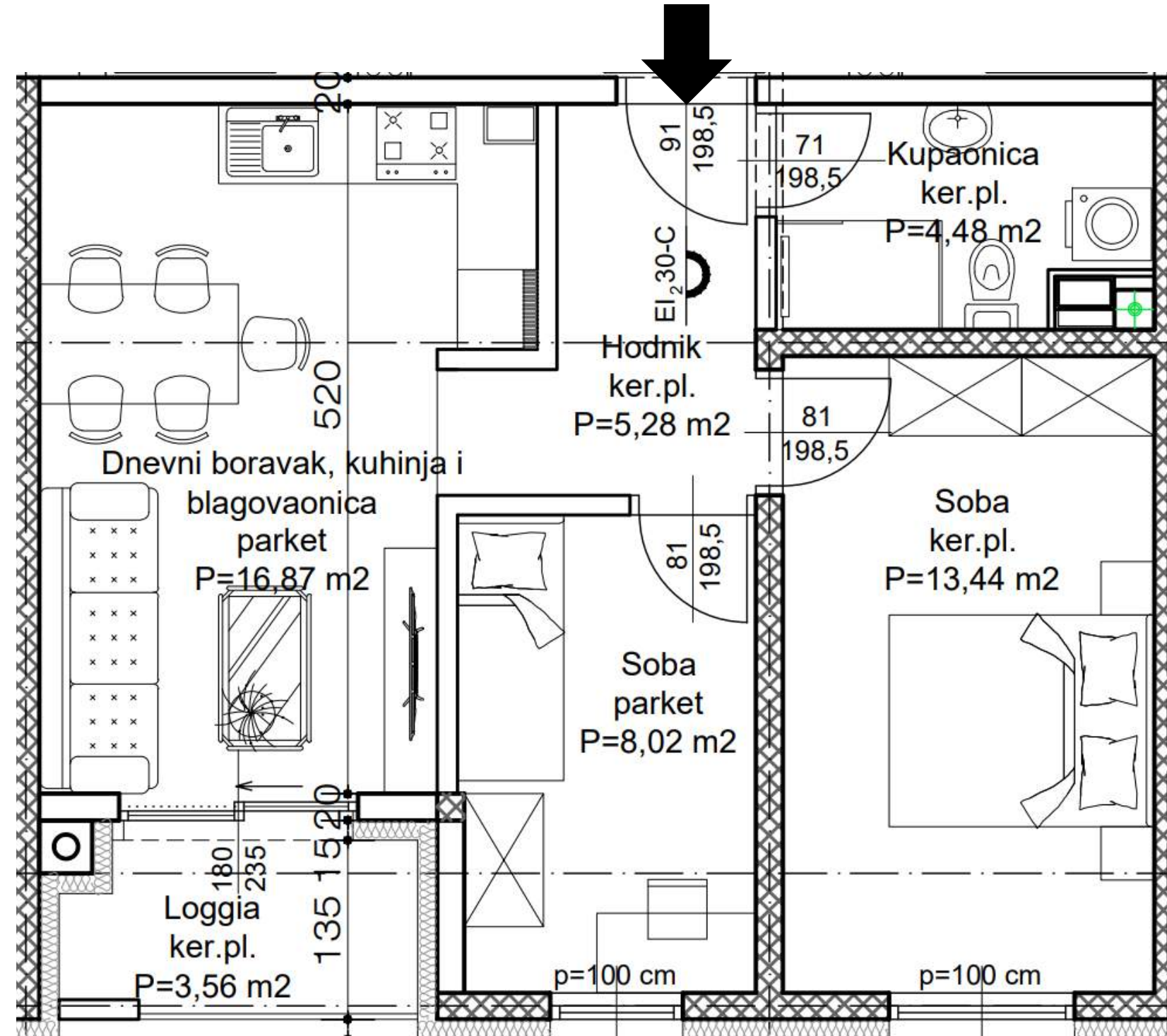




ORIJENTACIJA



#ID3 #ID13 #ID23

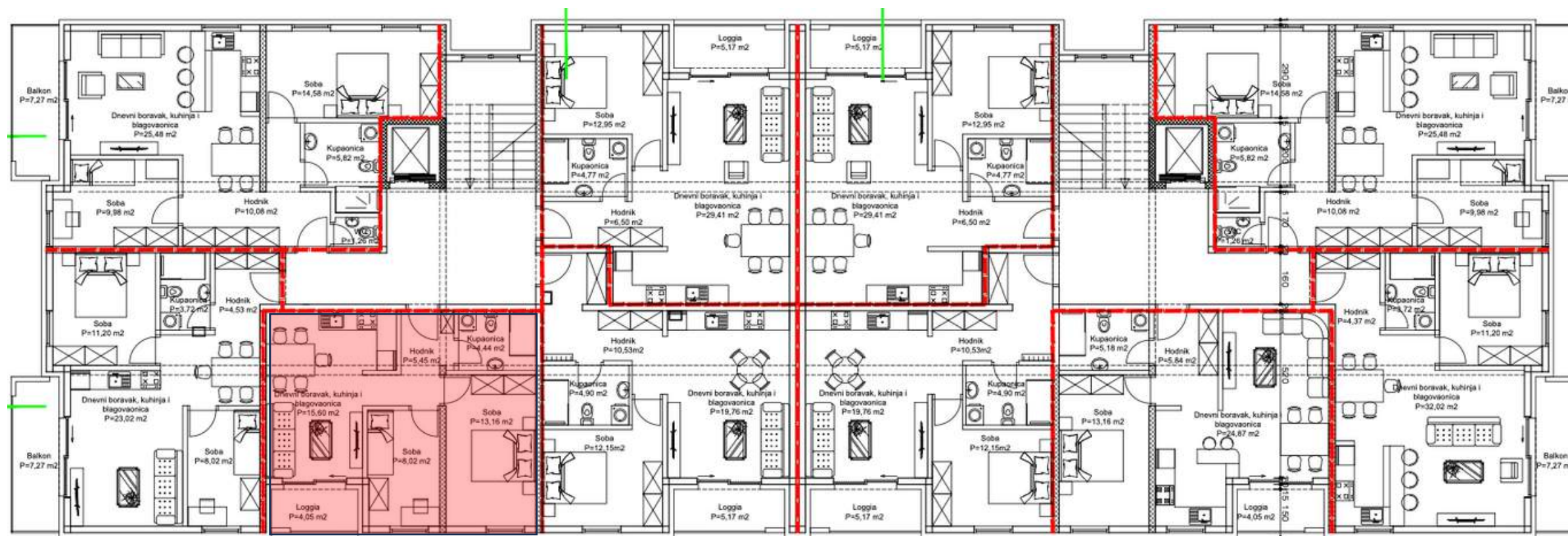




# ORIJENTACIJA



#ID3 #ID13 #ID23



1. Hodnik	5,28 m <sup>2</sup>
2. Kupaonica	4,48 m <sup>2</sup>
3. Soba	13,44 m <sup>2</sup>
4. Soba	8,02 m <sup>2</sup>
5. Dnevni boravak, kuhinja i blagovaonica	16,87 m <sup>2</sup>
6. Loggia 3,56×0,75	2,67 m <sup>2</sup>

-----  
 UKUPNO : 50,76 m<sup>2</sup> ›





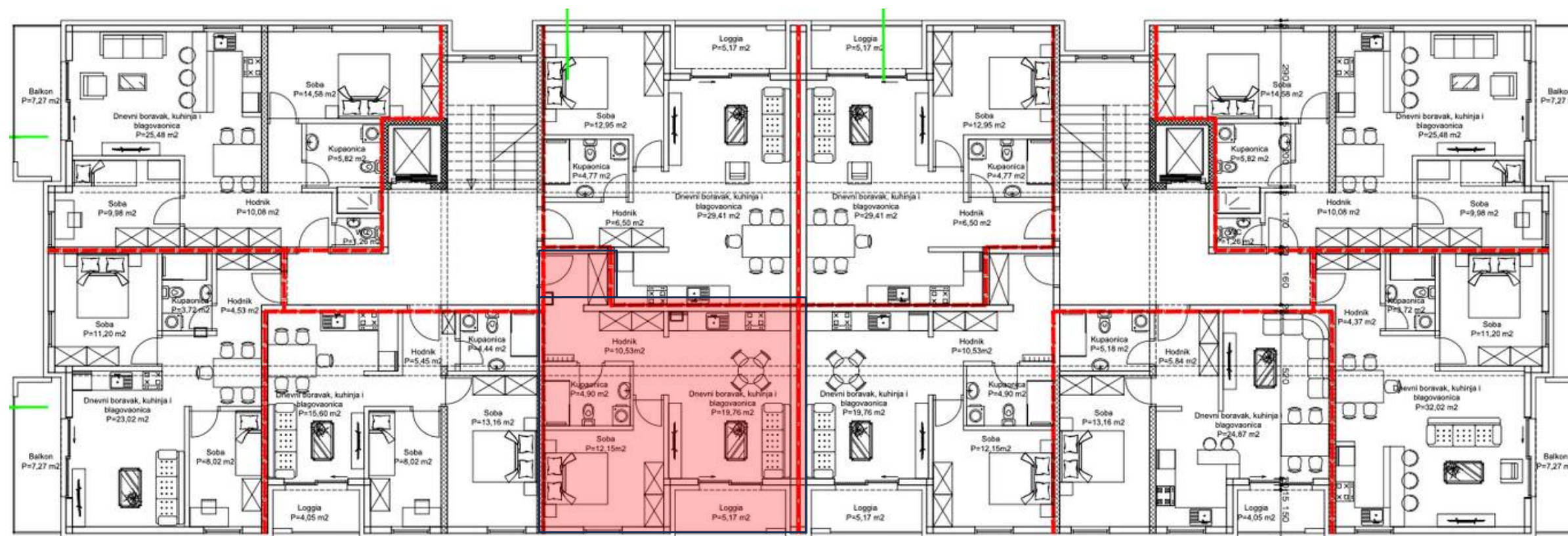




## ORIJENTACIJA



#ID4 #ID14 #ID24



1. Hodnik	7,57 m <sup>2</sup>
2. Kupaonica	4,76 m <sup>2</sup>
3. Soba	12,95 m <sup>2</sup>
4. Dnevni boravak, kuhinja i blagovaonica	22,38 m <sup>2</sup>
5. Loggia 4,57×0,75	3,43 m <sup>2</sup>

---

UKUPNO : 51,09 m<sup>2</sup> :

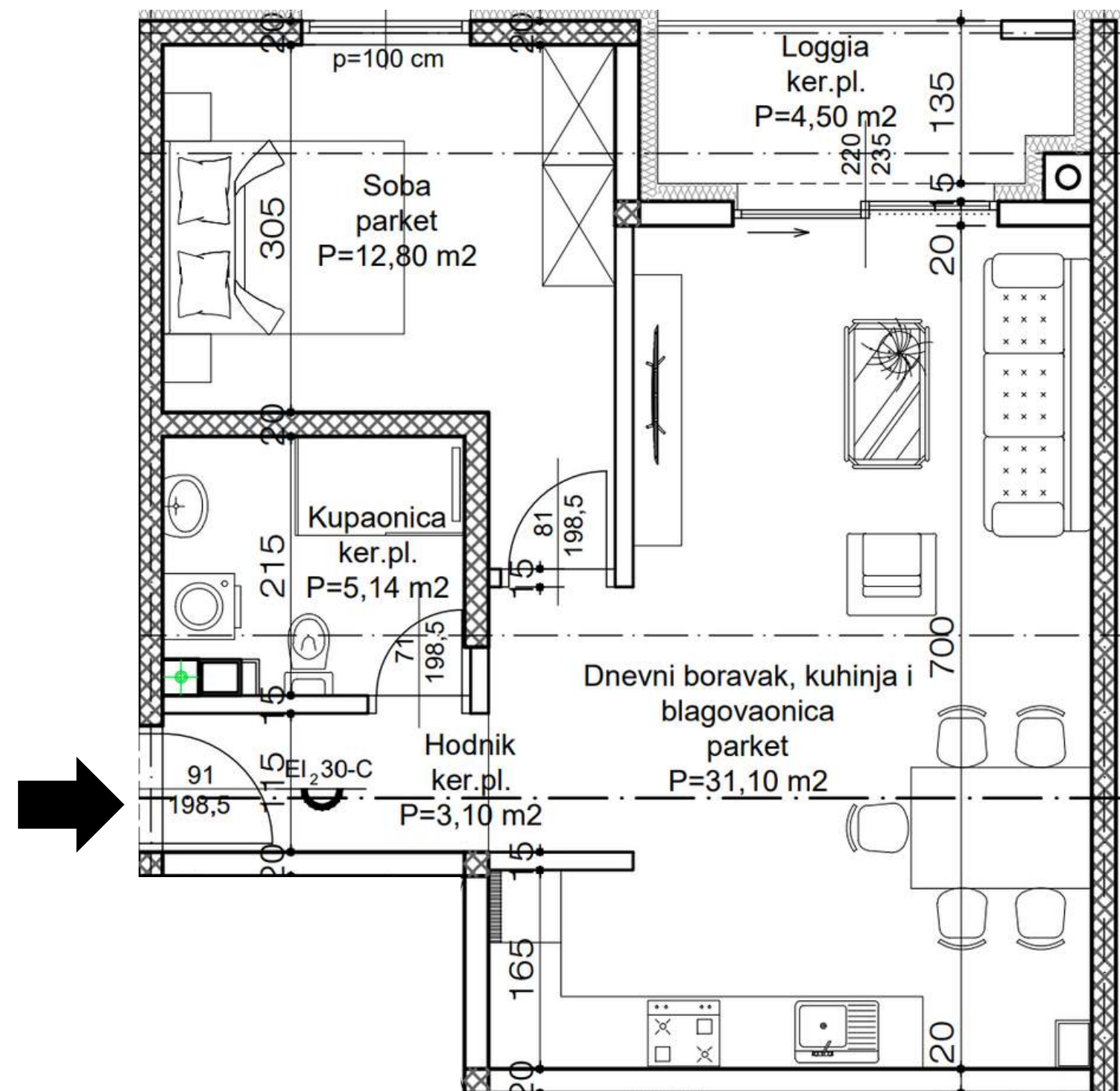




ORIJENTACIJA



#ID5 #ID15 #ID25



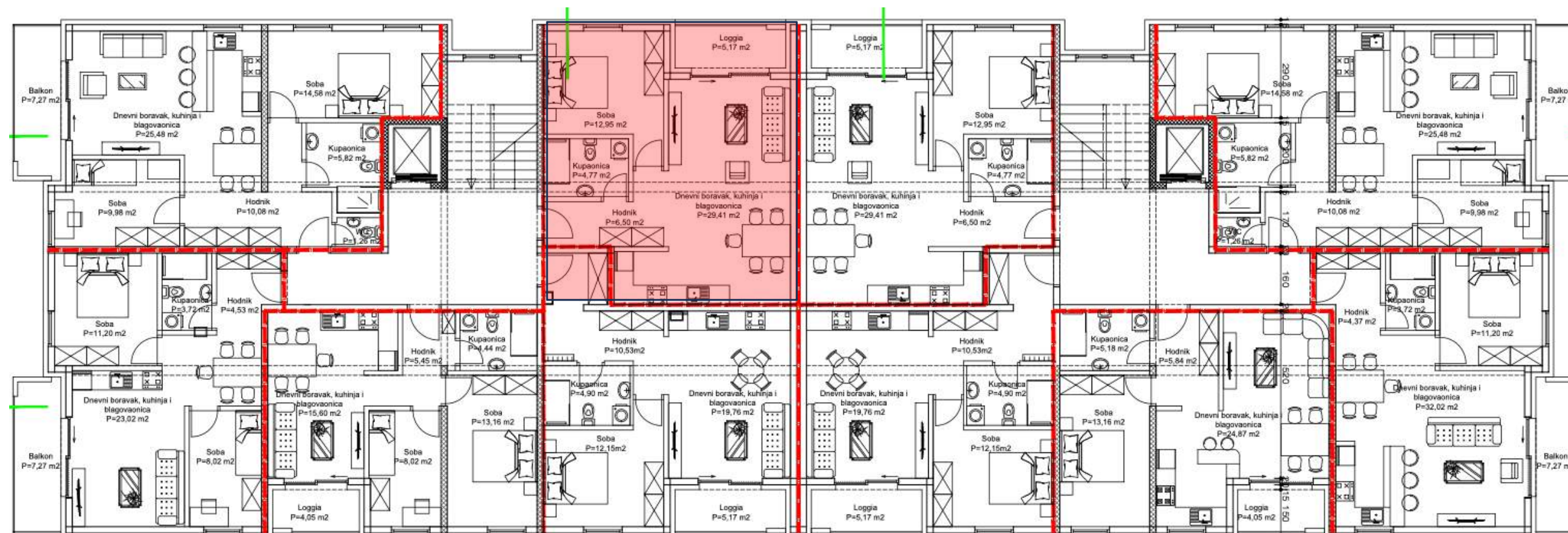




ORIJENTACIJA



#ID5 #ID15 #ID25



1. Hodnik	3,10 m <sup>2</sup>
2. Kupaonica	5,14 m <sup>2</sup>
3. Soba	12,80 m <sup>2</sup>
4. Dnevni boravak, kuhinja i blagovaonica	31,10 m <sup>2</sup>
5. Loggia 4,50x0,75	3,38 m <sup>2</sup>

UKUPNO :

55,52 m<sup>2</sup> :

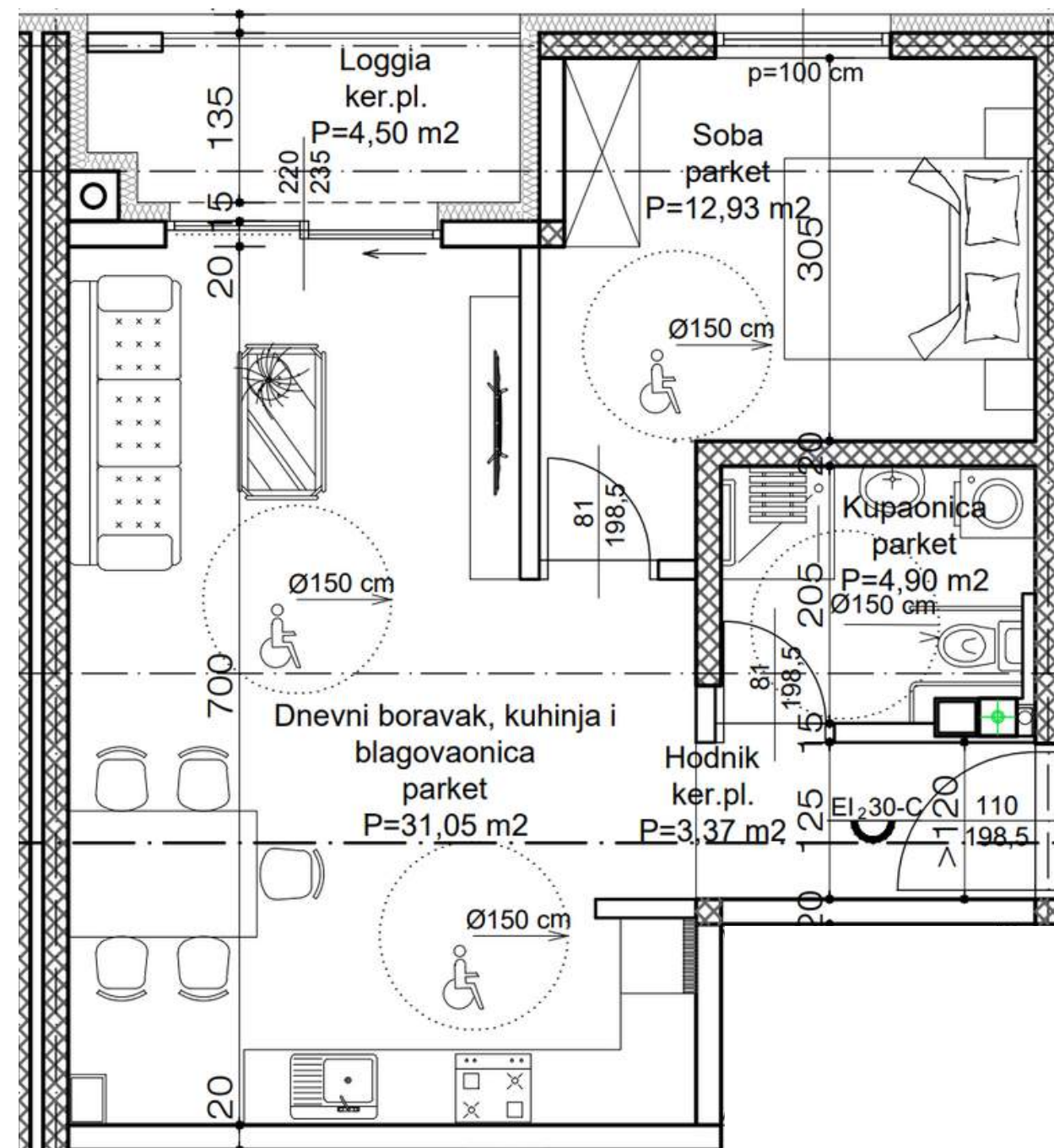




ORIJENTACIJA



#ID6 #ID16 #ID26



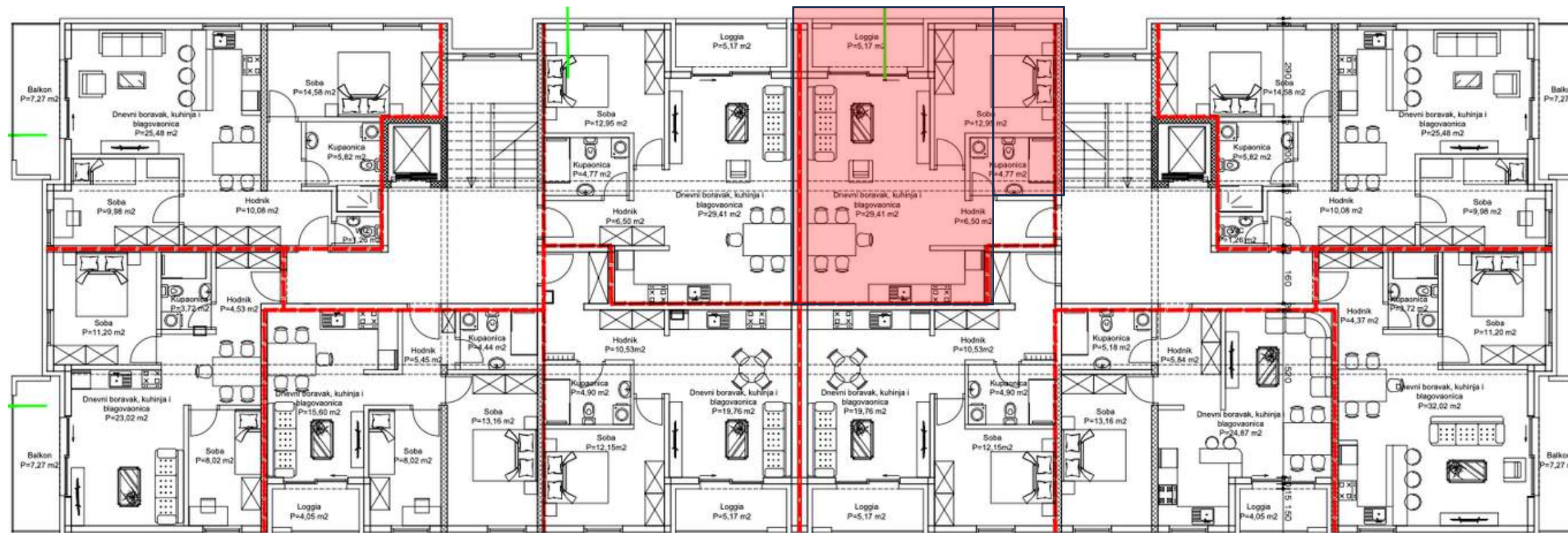




## ORIJENTACIJA



#ID6 #ID16 #ID26



1. Hodnik	3,37 m <sup>2</sup>
2. Kupaonica	4,90 m <sup>2</sup>
3. Soba	12,93 m <sup>2</sup>
4. Dnevni boravak, kuhinja i blagovaonica	31,05 m <sup>2</sup>
5. Loggia 4,50×0,75	3,38 m <sup>2</sup>
<hr/>	
UKUPNO :	55,65 m <sup>2</sup>

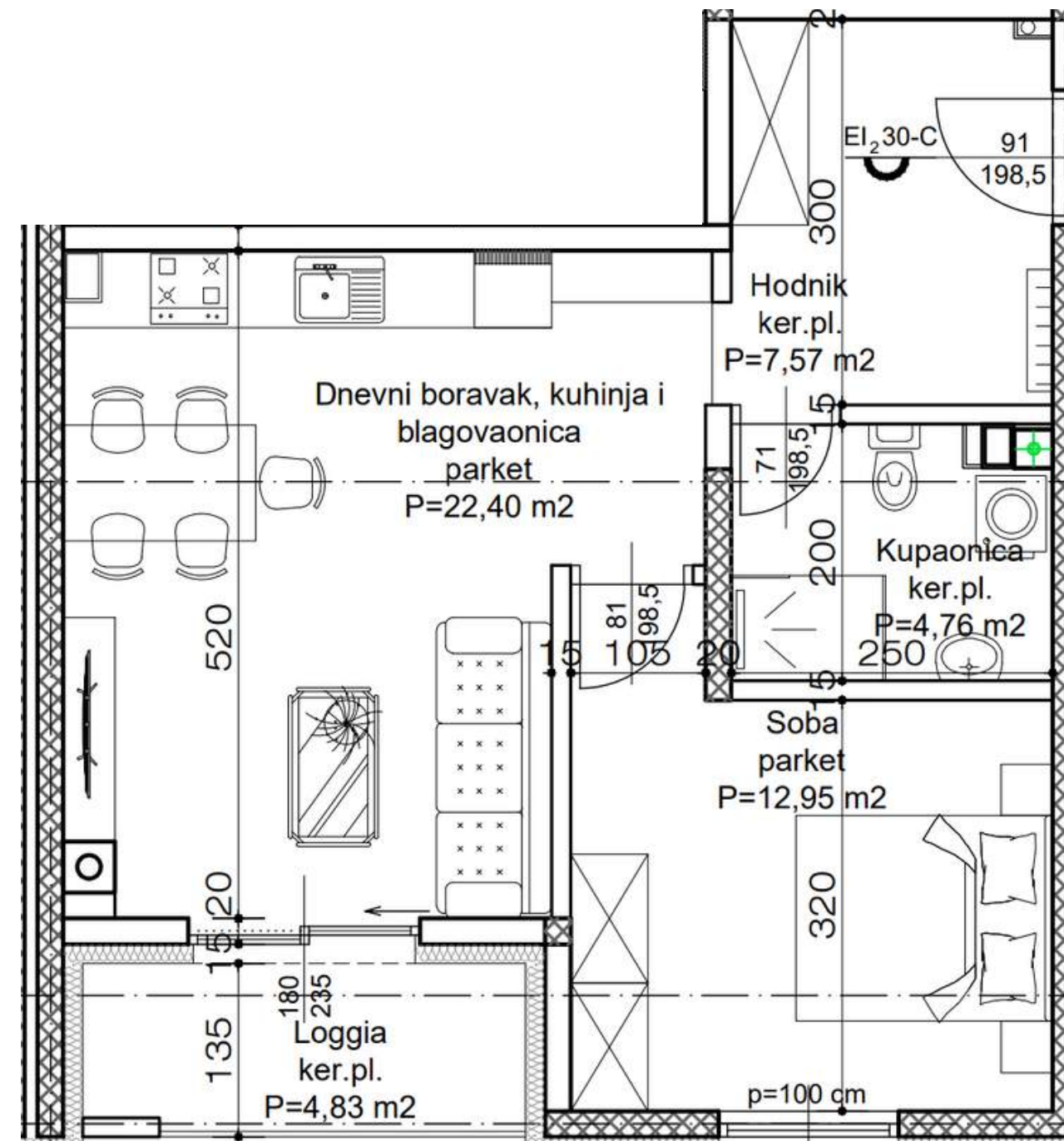




ORIJENTACIJA



#ID7 #ID17#ID27



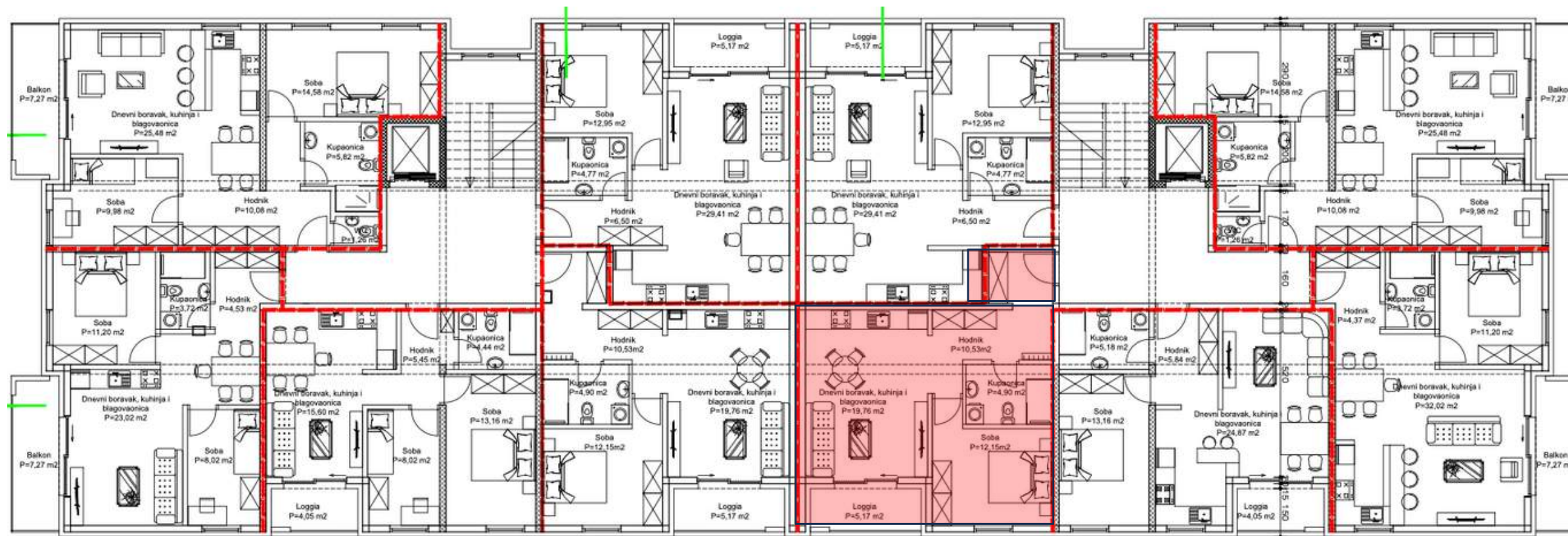




ORIJENTACIJA



#ID7 #ID17 #ID27



1. Hodnik	7,57 m <sup>2</sup>
2. Kupaonica	4,76 m <sup>2</sup>
3. Soba	12,95 m <sup>2</sup>
4. Dnevni boravak, kuhinja i blagovaonica	22,38 m <sup>2</sup>
5. Loggia 4,57×0,75	3,43 m <sup>2</sup>

-----  
UKUPNO : 51,09 m<sup>2</sup> :  
-----

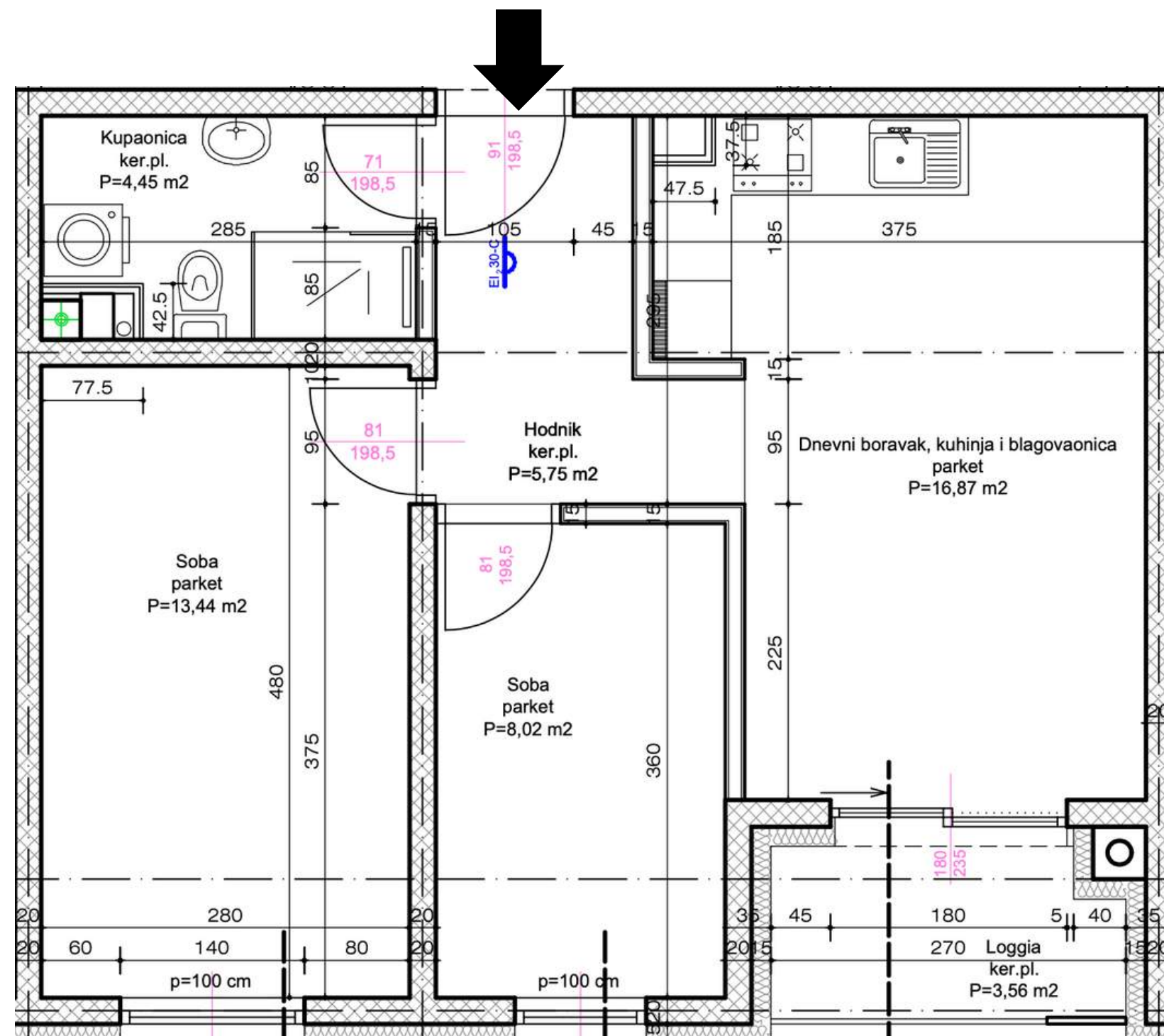




ORIJENTACIJA



#ID8 #ID18 #ID28

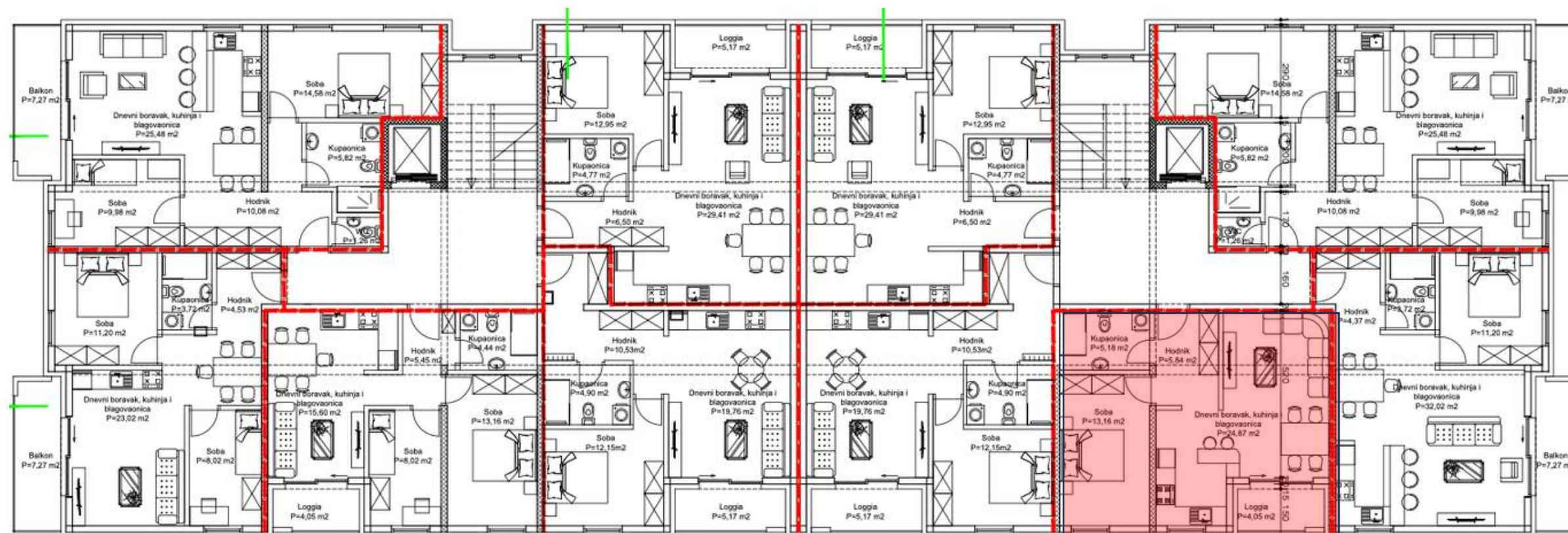




ORIJENTACIJA



#ID8 #ID18 #ID28



1. Hodnik	5,75 m <sup>2</sup>
2. Kupaonica	4,45 m <sup>2</sup>
3. Soba	13,44 m <sup>2</sup>
4. Dnevni boravak i blagovaonica	19,43 m <sup>2</sup>
5. Kuhinja	5,63 m <sup>2</sup>
6. Loggia 3,56×0,75	2,67 m <sup>2</sup>

-----  
UKUPNO : 51,37 m<sup>2</sup> :

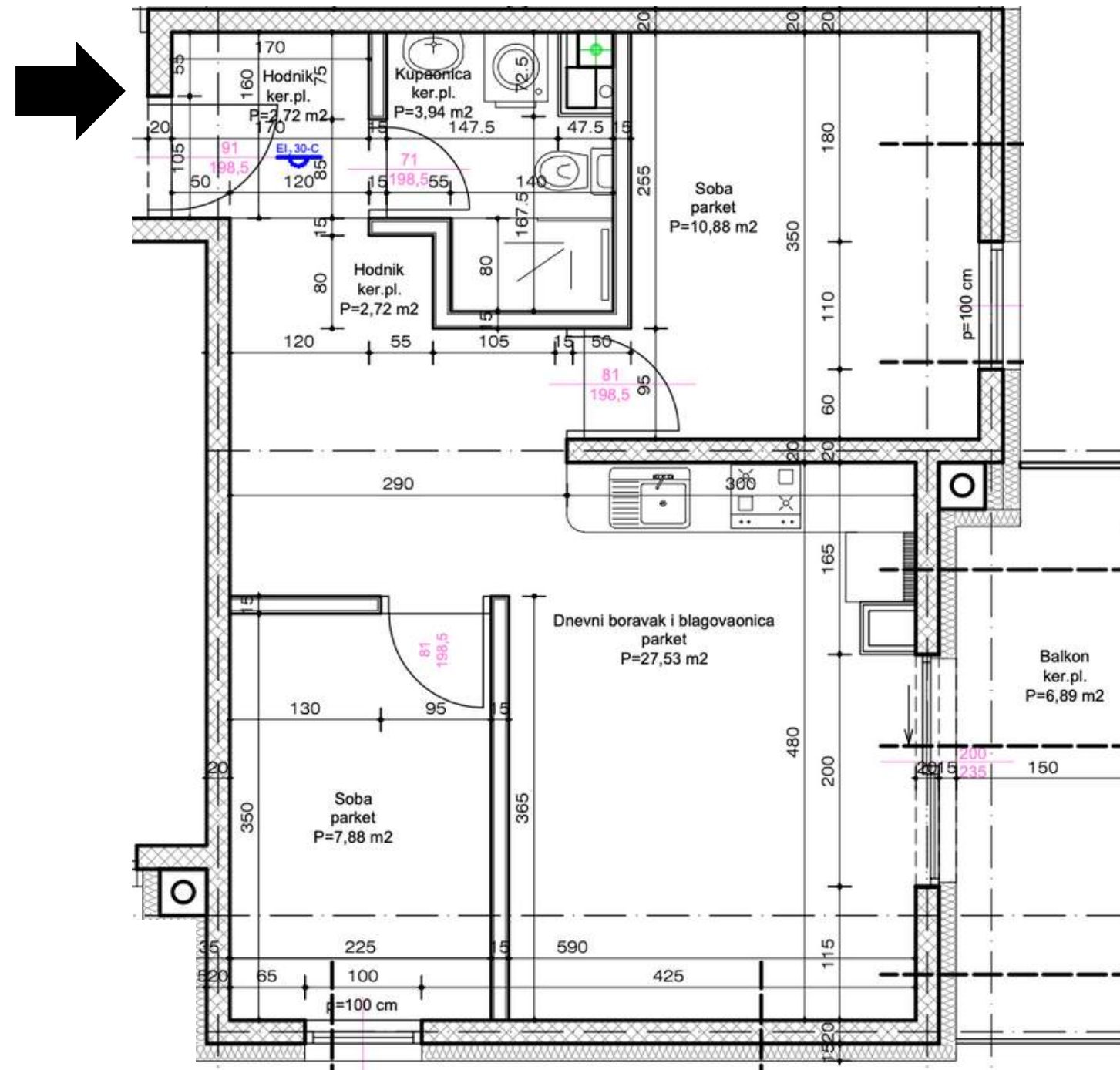




ORIJENTACIJA



#ID9 #ID19 #ID29

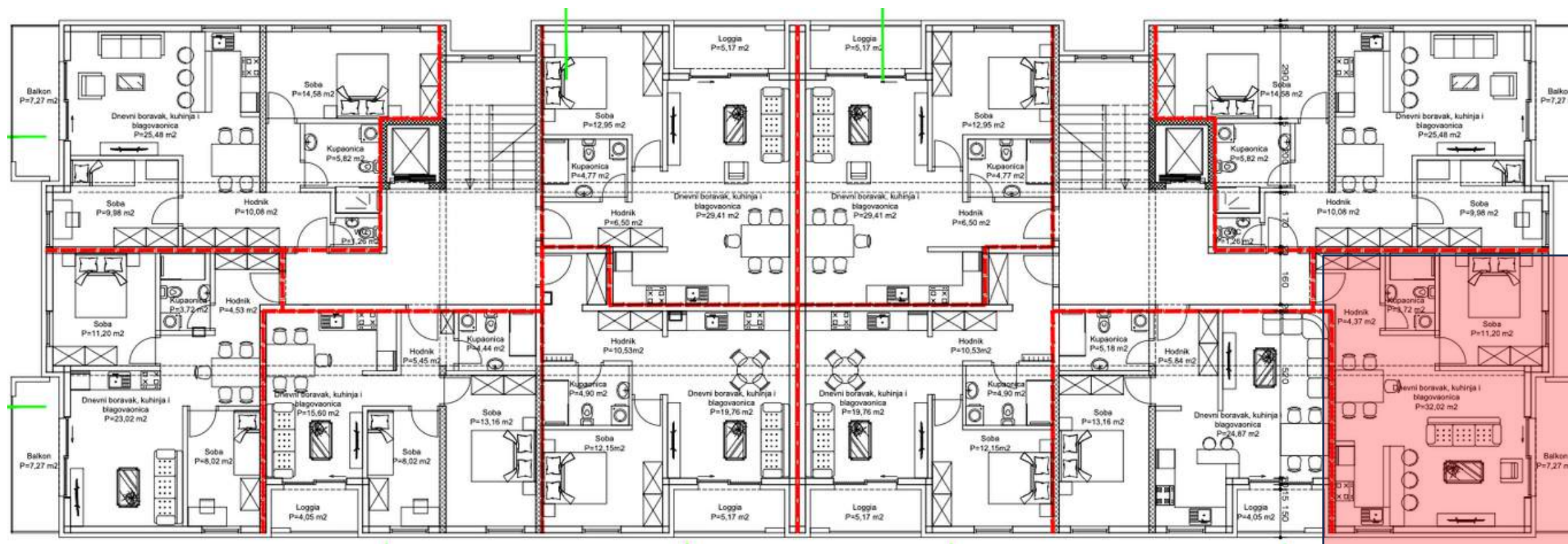




# ORIJENTACIJA



#ID9 #ID19 #ID29



1. Hodnik	2,72 m <sup>2</sup>
2. Kupaonica	3,94 m <sup>2</sup>
3. Soba	10,88 m <sup>2</sup>
4. Dnevni boravak i blagovaonica	27,53 m <sup>2</sup>
5. Kuhinja	5,59 m <sup>2</sup>
6. Balkon natkriveni 6,89×0,50	3,45 m <sup>2</sup>

---

UKUPNO : 54,11 m<sup>2</sup> :

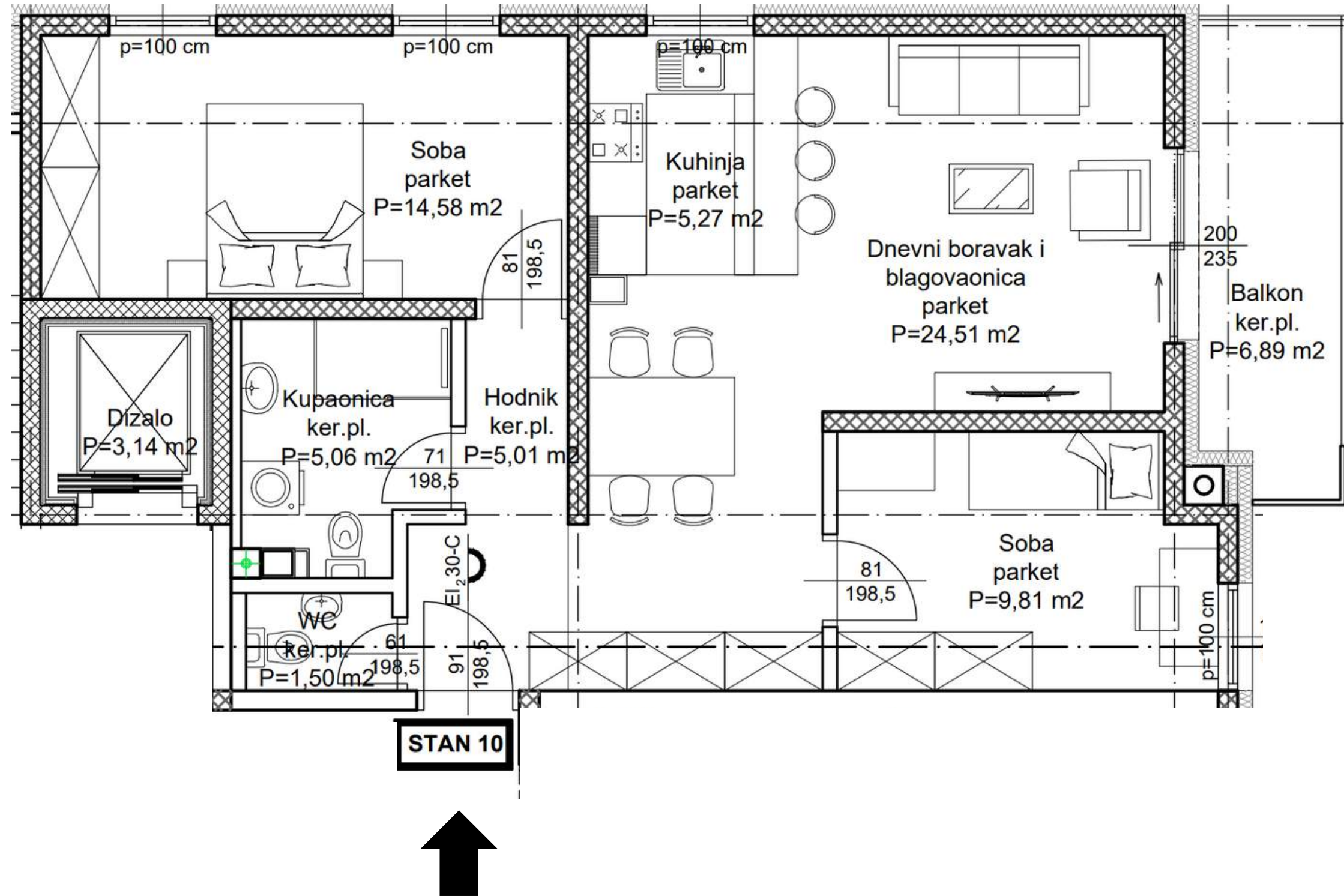




ORIJENTACIJA



#ID30

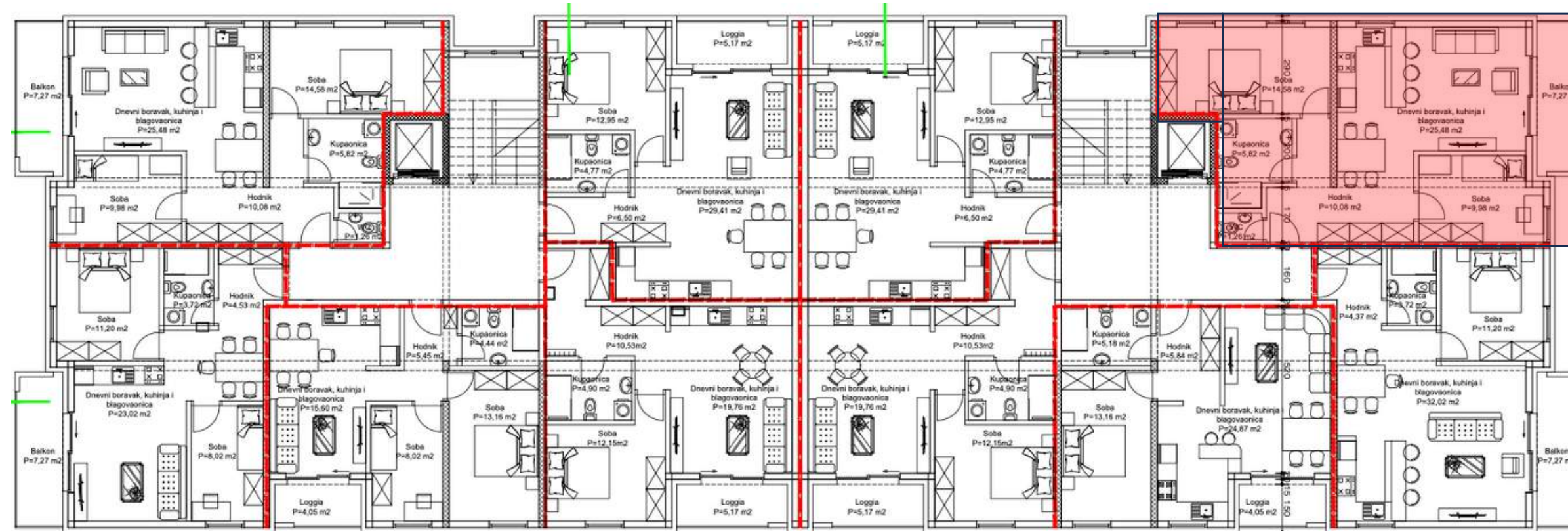




ORIJENTACIJA



#ID10 #ID20 #ID30



**STAN 10,20,30 - dvije spavaće sobe**

1. Hodnik	5,01 m <sup>2</sup>
2. WC	1,50 m <sup>2</sup>
3. Kupaonica	5,06 m <sup>2</sup>
4. Soba	14,58 m <sup>2</sup>
5. Dnevni boravak i blagovaonica	24,51 m <sup>2</sup>
6. Kuhinja	5,27 m <sup>2</sup>
7. Soba	9,81 m <sup>2</sup>
8. Balkon natkriveni 6,89×0,50	3,45 m <sup>2</sup>

-----  
**UKUPNO :** 69,19 m<sup>2</sup> :

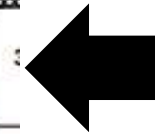
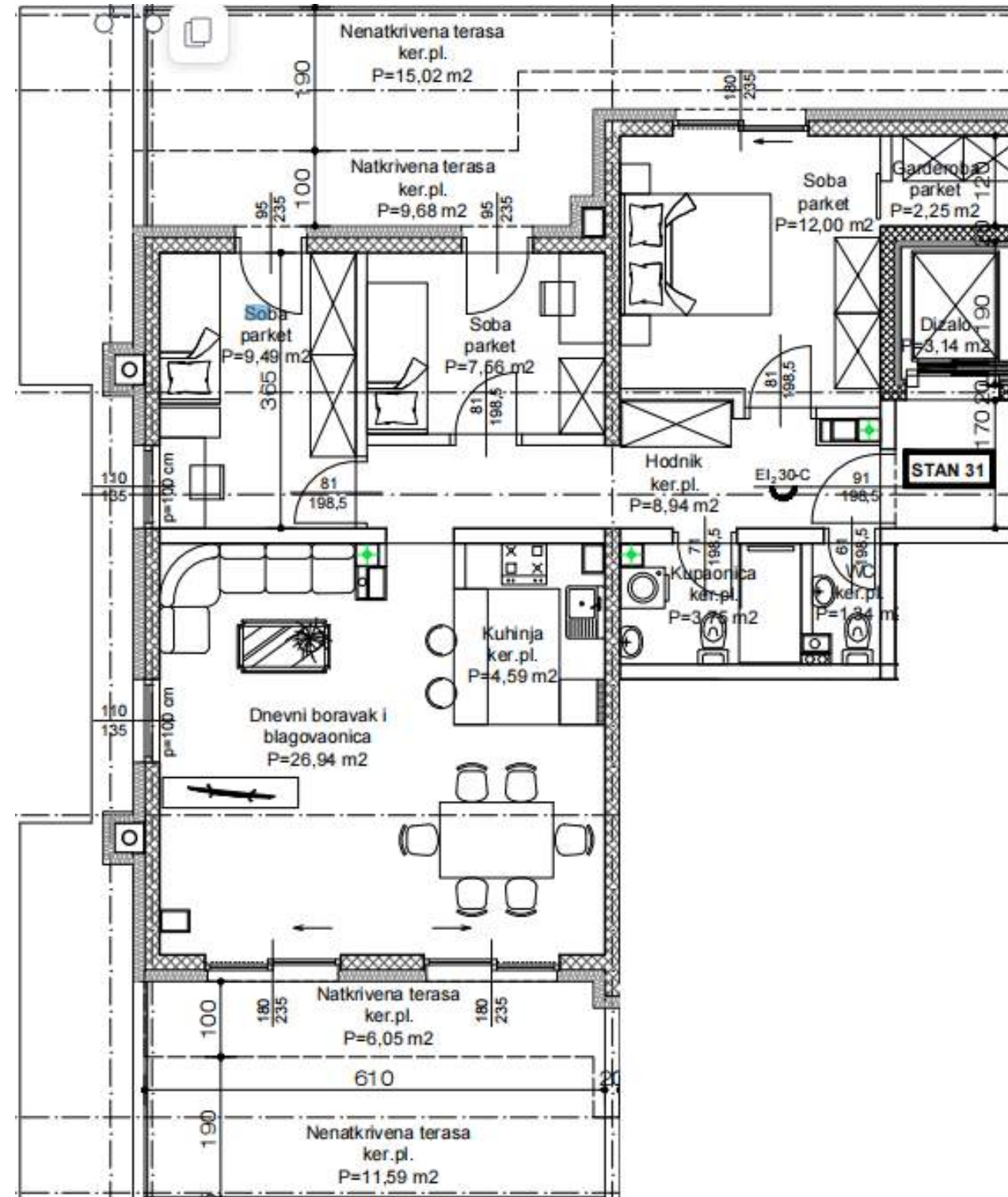




ORIJENTACIJA



#ID31

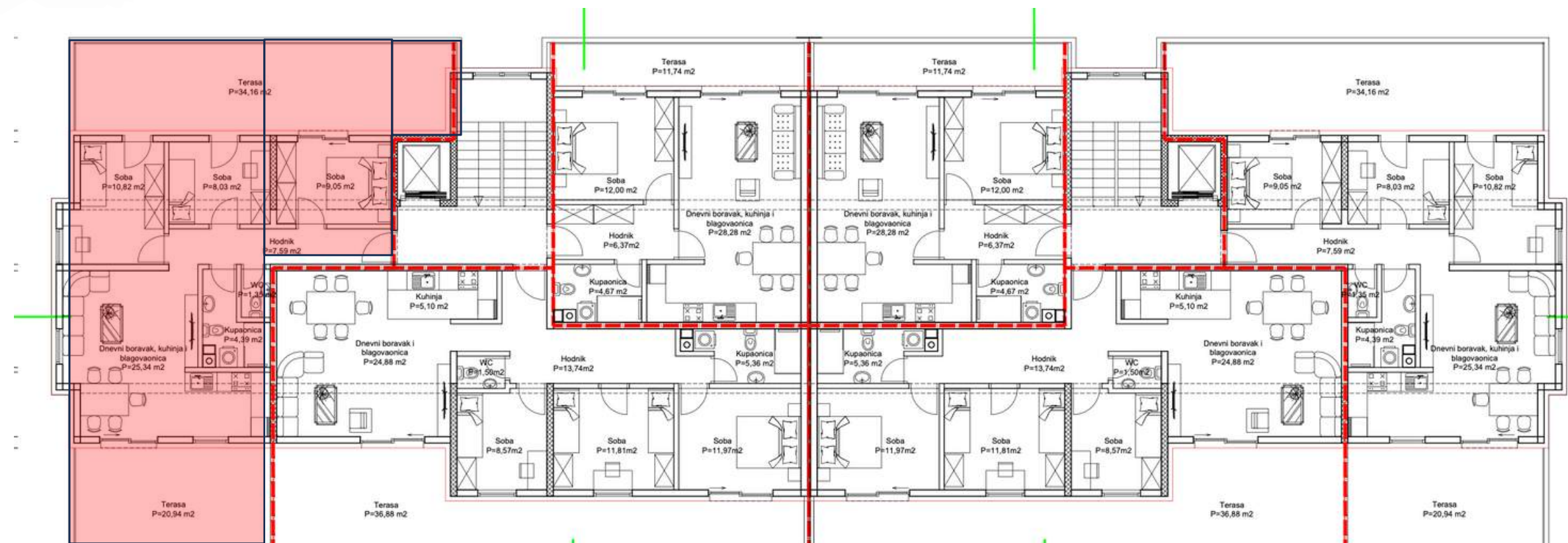




ORIJENTACIJA



#ID31



1. Hodnik	8,94 m <sup>2</sup>
2. WC	1,34 m <sup>2</sup>
3. Kupaonica	3,75 m <sup>2</sup>
4. Soba	12,00 m <sup>2</sup>
5. Garderoba	2,25 m <sup>2</sup>
6. Soba	7,56 m <sup>2</sup>
7. Soba	9,49 m <sup>2</sup>
8. Dnevni boravak i blagovaonica	26,94 m <sup>2</sup>
9. Kuhinja	4,59 m <sup>2</sup>
10. Natkrivena terasa 9,68×0,50	4,84 m <sup>2</sup>
11. Nenetkrivena terasa 15,02 × 0,25	3,76 m <sup>2</sup>
12. Natkrivena terasa 6,05 × 0,50	3,03 m <sup>2</sup>
13. Nenatkrivena terasa 11,59 × 0,25	2,90 m <sup>2</sup>

UKUPNO : **91,39 m<sup>2</sup>**



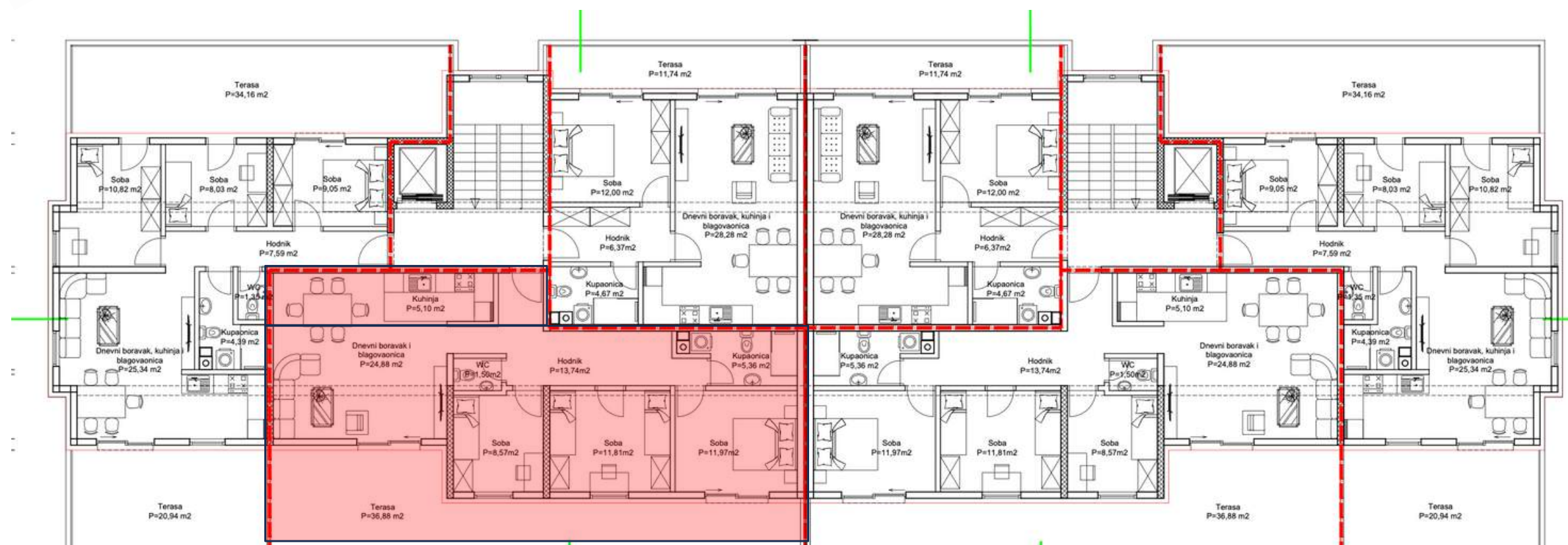




ORIJENTACIJA



#ID32



**STAN 32 - tri spavaće sobe**

1. Hodnik	7,54 m <sup>2</sup>
2. WC	1,40 m <sup>2</sup>
3. Kupaonica	3,83 m <sup>2</sup>
4. Soba	10,40 m <sup>2</sup>
5. Soba	7,68 m <sup>2</sup>
6. Soba	7,49 m <sup>2</sup>
7. Dnevni boravak i blagovaonica	27,28 m <sup>2</sup>
8. Kuhinja	5,73 m <sup>2</sup>
9. Natkrivena terasa 20,50×0,50	10,25 m <sup>2</sup>
10. Nenetkrivena terasa 18,04 × 0,25	4,51 m <sup>2</sup>

UKUPNO : **86,11 m<sup>2</sup>**

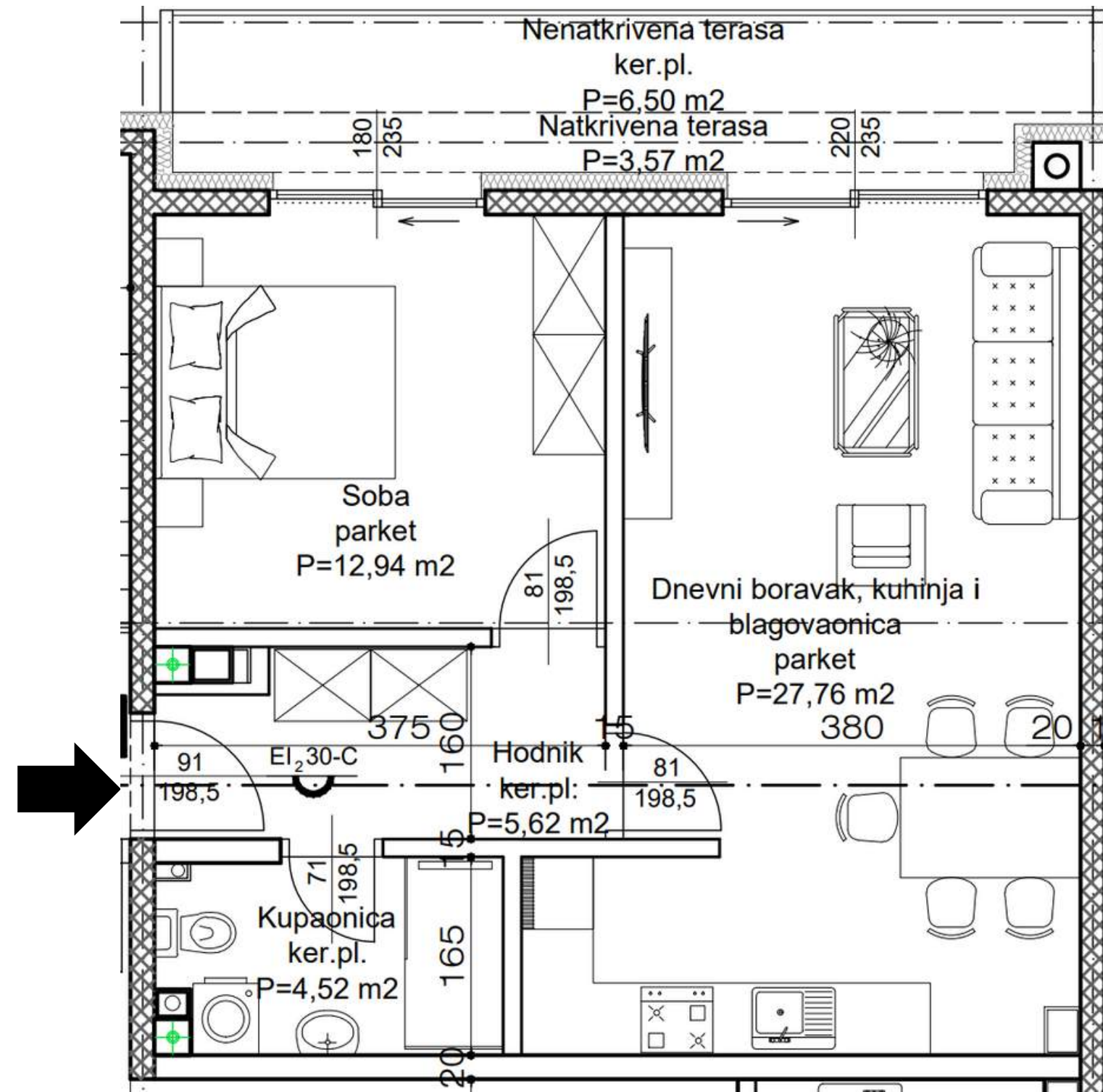




ORIJENTACIJA



#ID33

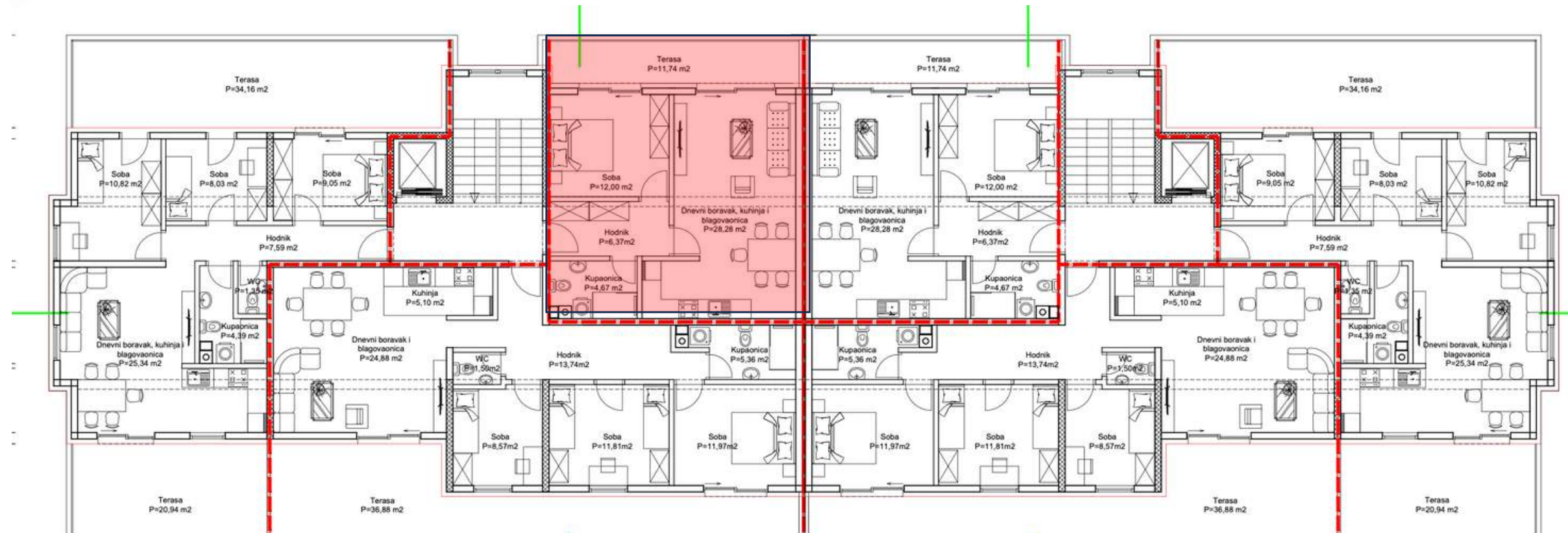




ORIJENTACIJA



#ID33



### STAN 33 - jedna spavaća soba

1. Hodnik	5,62 m <sup>2</sup>
2. Kupaonica	4,52 m <sup>2</sup>
3. Soba	12,94 m <sup>2</sup>
4. Dnevni boravak, kuhinja i blagovaonica	27,76 m <sup>2</sup>
5. Natkrivena terasa 3,57×0,50	1,79 m <sup>2</sup>
6. Nenetkrivena terasa 6,50 × 0,25	1,63 m <sup>2</sup>

-----  
UKUPNO : **54,26 m<sup>2</sup>**

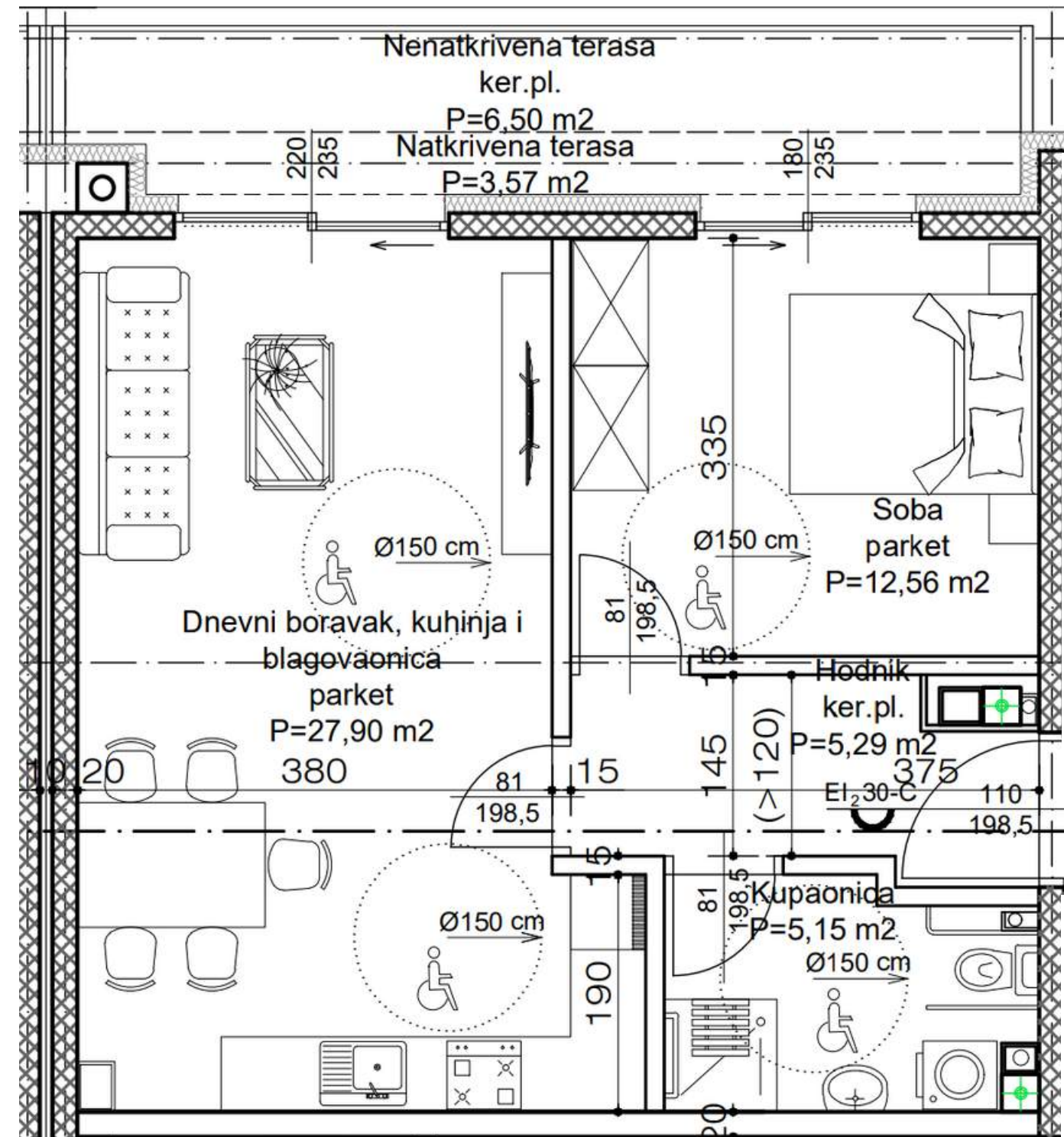




ORIJENTACIJA



#ID34

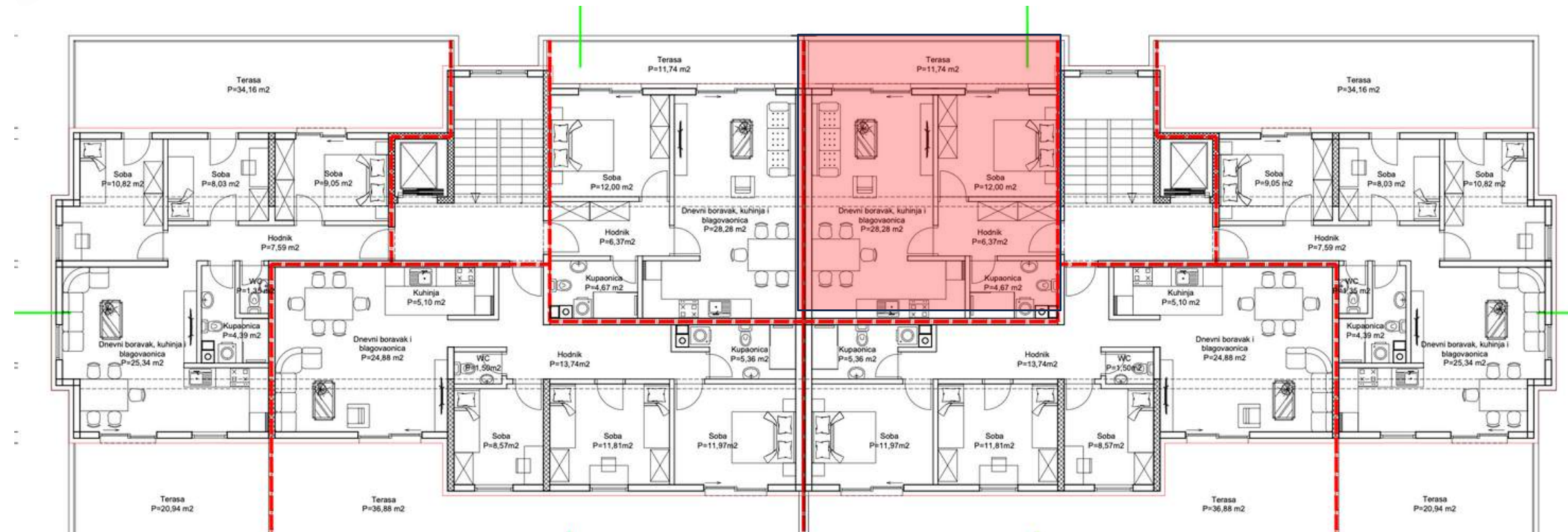




ORIJENTACIJA



#ID34



### STAN 34

1. Hodnik	5,29 m <sup>2</sup>
2. Kupaonica	5,15 m <sup>2</sup>
3. Soba	12,56 m <sup>2</sup>
4. Dnevni boravak, kuhinja i blagovaonica	27,90 m <sup>2</sup>
5. Natkrivena terasa 3,57×0,50	1,79 m <sup>2</sup>
6. Nenetkrivena terasa 6,50 × 0,25	1,63 m <sup>2</sup>

UKUPNO : **54,32 m<sup>2</sup>**

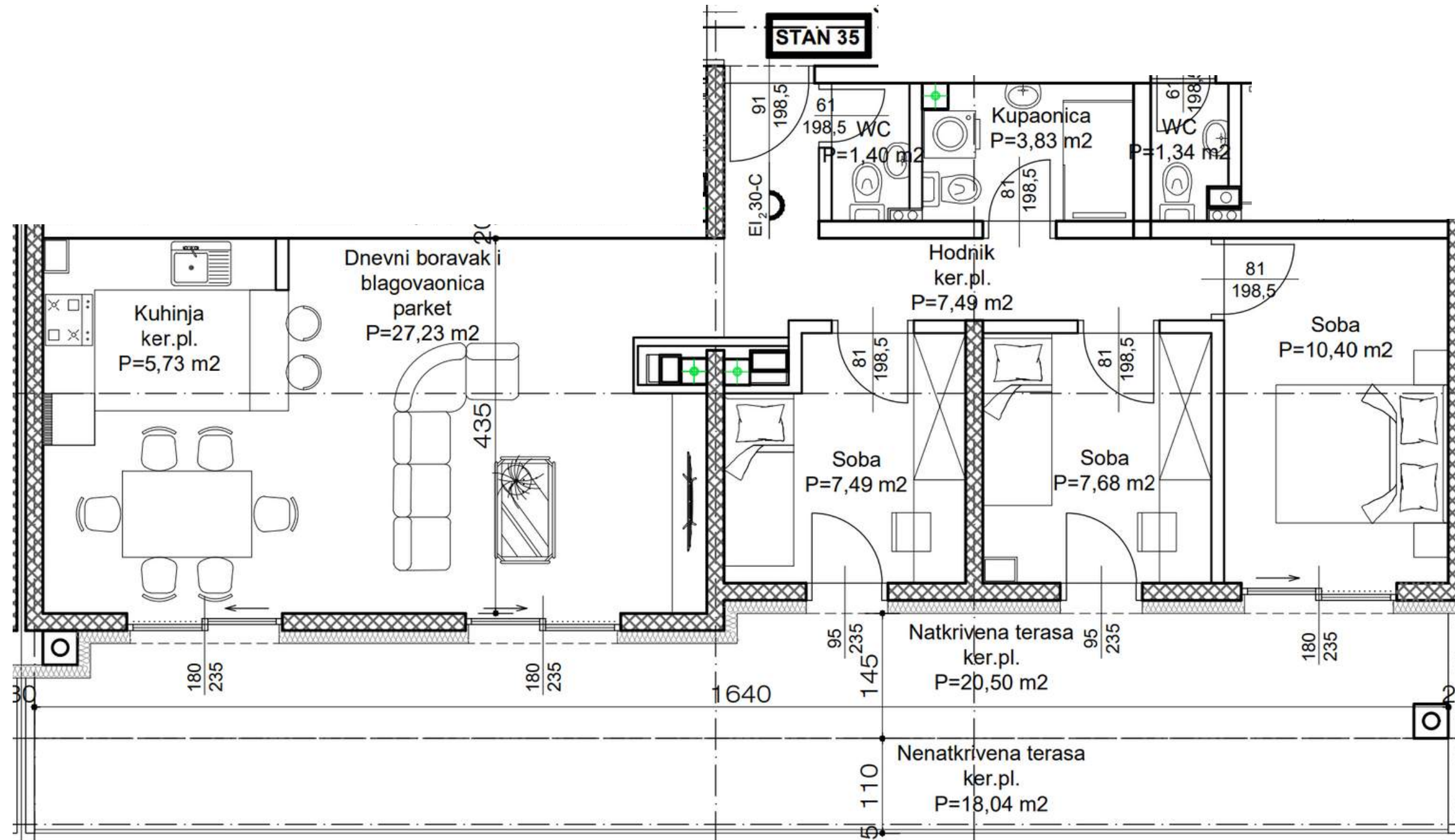
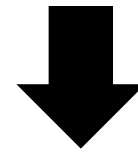




ORIJENTACIJA



#ID35

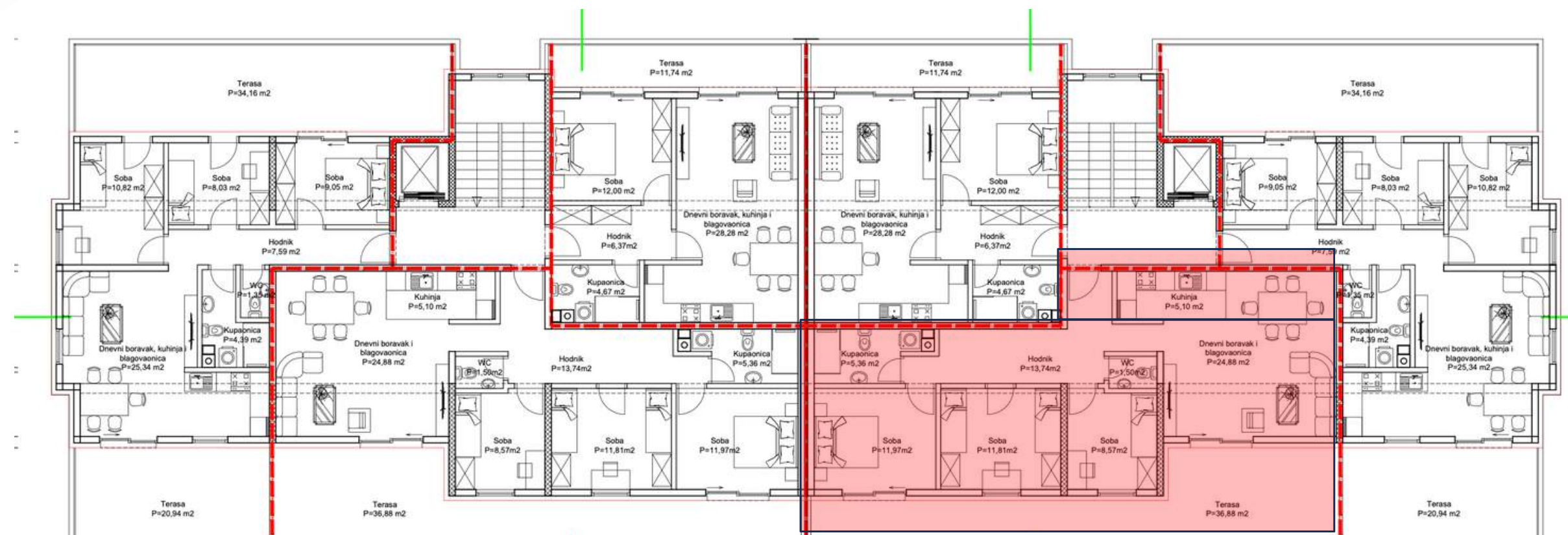




ORIJENTACIJA



#ID35



### STAN 35 - tri spavaće sobe

1. Hodnik	7,49 m <sup>2</sup>
2. WC	1,40 m <sup>2</sup>
3. Kupaonica	3,83 m <sup>2</sup>
4. Soba	10,40 m <sup>2</sup>
5. Soba	7,68 m <sup>2</sup>
6. Soba	7,49 m <sup>2</sup>
7. Dnevni boravak i blagovaonica	27,23 m <sup>2</sup>
8. Kuhinja	5,73 m <sup>2</sup>
9. Natkrivena terasa 20,50×0,50	10,25 m <sup>2</sup>
10. Nenatkrivena terasa 18,04 × 0,25	4,51 m <sup>2</sup>

UKUPNO : 86,01 m<sup>2</sup>



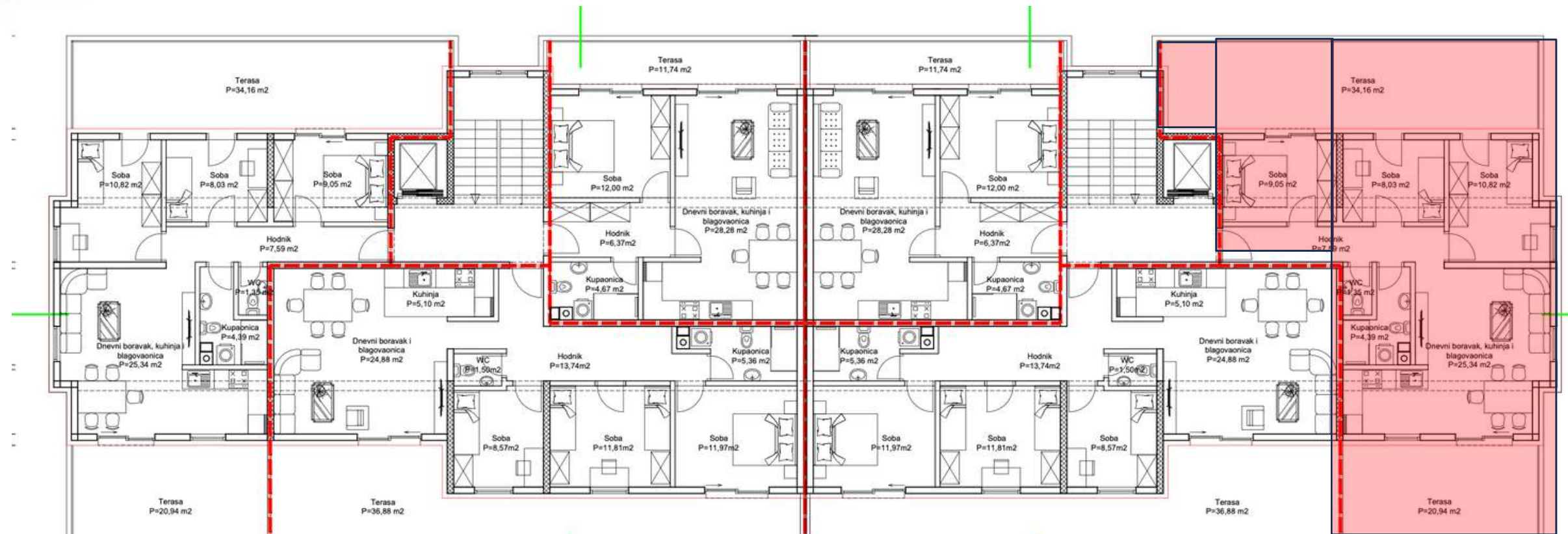




ORIJENTACIJA



#ID36



**STAN 36 - tri spavaće sobe**

1. Hodnik	8,76 m <sup>2</sup>
2. WC	1,34 m <sup>2</sup>
3. Kupaonica	3,75 m <sup>2</sup>
4. Soba	12,00 m <sup>2</sup>
5. Garderoba	2,25 m <sup>2</sup>
6. Soba	7,56 m <sup>2</sup>
7. Soba	9,49 m <sup>2</sup>
8. Dnevni boravak i blagovaonica	27,23 m <sup>2</sup>
9. Kuhinja	4,59 m <sup>2</sup>
10. Natkrivena terasa 9,68×0,50	4,84 m <sup>2</sup>
11. Nenetkrivena terasa 15,02 × 0,25	3,76 m <sup>2</sup>
12. Natkrivena terasa 6,05 × 0,50	3,03 m <sup>2</sup>
13. Nenetkrivena terasa 11,59 × 0,25	2,90 m <sup>2</sup>