

HouseMate

THE SMART WAY TO
CONTROL YOUR
WORLD



MUSIC SYSTEM

DOOR OPENER

TV/DVD

WINDOWS

LIGHTS &
SOCKETS

INTERCOM

BED CONTROLS

Imagine being able to do everything from one device: Open your front door and turn on the room lights. Change channels on your TV and turn up the heating. Answer a phone call and send some texts. Browse the Internet, play some music or watch YouTube.

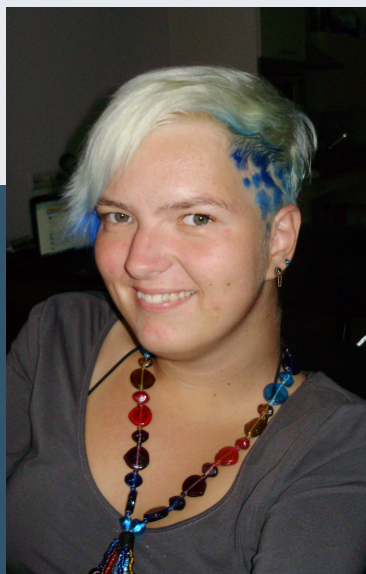
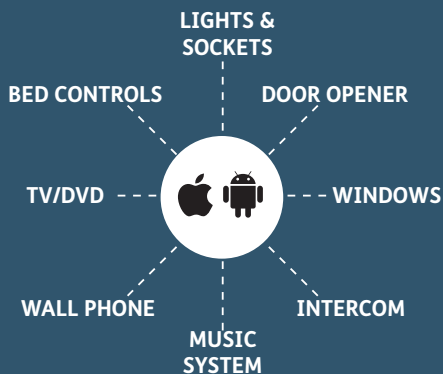
HouseMate hardware in combination with an **iOS** or **Android** device enables you to do this and much more. Read on and discover why HouseMate, together with an Android, iPhone or iPad, is the smart way to control your world.



Unique Perspectives
Limited

HOW DOES IT WORK?

HouseMate is a combined hardware/app solution that enables a switch user to fully control their iOS or Android device and use it to operate other equipment in their home or work environment using InfraRed, EasyWave and Z-Wave signals.



Karin van Dijk - 'Now everyone can use a phone'

TELL ME ABOUT THE HARDWARE

The hardware is controlled using the **built-in switch** or by connecting an **external switch** or joystick. It can also be interfaced to R-Net and DX wheelchair control systems.

It is powered by a rechargeable Li-Ion battery and contains a powerful omnidirectional **InfraRed transmitter** and a Bluetooth radio module.

The hardware communicates the switch presses to the smart-phone using Bluetooth. On an iOS device the switch presses drive the **iOS Switch Control** functions. On an Android device the **ClickToPhone app** implements the scanning. When the user chooses an environmental control option the app instructs the hardware to transmit the corresponding InfraRed code.

The **Bluetooth connection** between the smart-phone and HouseMate is reliable and fast. When the user presses their switch the smartphone wakes up immediately and is ready for use.

HouseMate can be fitted with a **radio frequency pager**. This alarm can be activated at anytime by pressing the switch for a defined period of time. Importantly, this feature is independent of the smart-phone.

A further possibility is the control of **EasyWave** or **Z-Wave** appliances using HouseMate's optional internal RF transmitter. Z-Wave requires the installation of a Z-Wave gateway and Z-Wave appliances such as sockets, light switches, thermostats etc.

FUNCTIONAL DIAGRAM



- Wired connection
- Infra-Red
- Bluetooth
- EasyWave (optional)
- Z-Wave (optional)
- Wifi (optional)

TELL ME ABOUT THE APPS

ClickToPhone



The ClickToPhone app has been specially designed to give switch and joystick users control over Android devices.

Combining intuitive scanning with a rich graphical interface the app simplifies and integrates the functions of a smart-phone together with environmental control seamlessly into one package.



HouseMate Home Control



The HouseMate Home Control app presents a grid of environmental control functions using icons and text. It is intended to be controlled using iOS Switch Control.

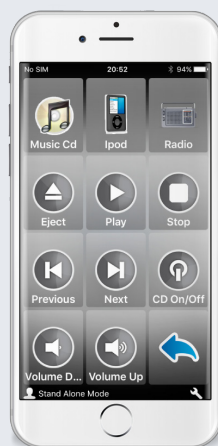
When the user chooses an icon the app instructs the hardware to execute the chosen function. The app communicates with the hardware using Bluetooth Smart.

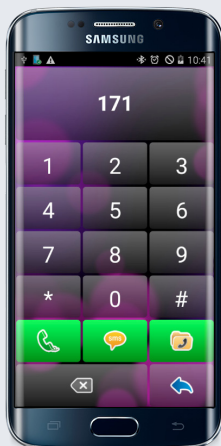


WHAT CAN I DO WITH IT?

USE IT AS AN ENVIRONMENTAL CONTROL...

30 grids fully customizable for size and content. Comprehensive set of 1000+ symbols with ability to import photographs and other pictures. 250 IR codes can be recorded into HouseMate or choose from a database of commonly used codes.



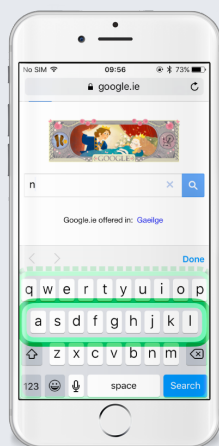
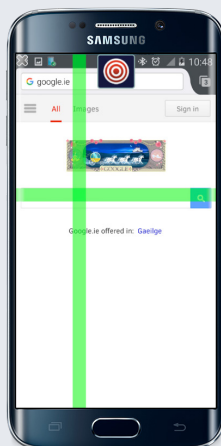
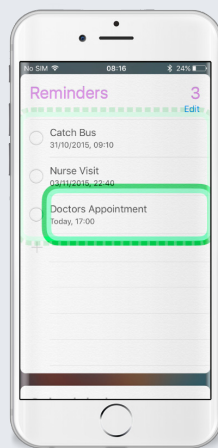
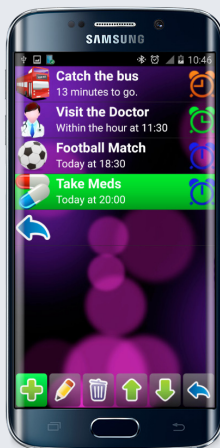


USE IT AS A MOBILE PHONE...

Wake up the phone, answer and make calls, send and receive SMS text Messages. Manage and edit contacts. View missed calls and check your Voice Mail.

USE IT AS A PERSONAL ORGANISER...

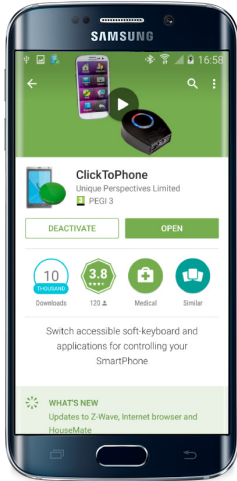
Use Reminders or an app of your choice, to remind you of upcoming events. Reminders can be scheduled to go off at intervals before an event to ensure that you have plenty of time to plan and prepare.



USE IT FOR FUN AND ENJOYMENT...

Switch accessible MP3 player? Switch accessible camera? Switch accessible Internet? Yes, yes and yes! Whether you are using an iOS or an Android you can control any app installed on your device.

IS IT EASY TO SETUP?



The Android App is called ClickToPhone. After installing from Google play, **ClickToPhone's wizard** will guide you through the setup procedure. You will be asked to choose one of four different user levels, the contents of the home screen, the scanning method and other commonly used options. The final step of the wizard guides you through pairing your phone with your hardware and making the first connection.

Further scanning options, editing of the environmental control grids, recording of InfraRed codes and other adjustments can be made at any stage.

Each setup, or project, including any recorded InfraRed signals can be saved to the SD card and backed up to another device, computer or even remotely over the internet.

ClickToPhone can be downloaded free from Google Play and installed on any device running Android 2.2 or higher including TV dongles. This allows the use of large HDMI screens for people with visual impairments.

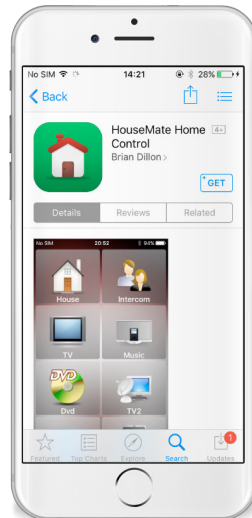
The iOS App is called HouseMate Home Control.

After installing from the App Store, select the **Setup your devices** option to guide you through the setup procedure. You will be asked to pair the HouseMate switch and enable iOS Switch Control. The final step of the wizard will pair the HouseMate app with your hardware for InfraRed control.

Editing of the environmental control grids, recording of InfraRed codes and other adjustments can be made at any stage by choosing technician mode.

Each setup, or project, including any recorded InfraRed signals can be saved to memory and backed up to computer using iExplorer3 or higher.

HouseMate Home Control can be downloaded free from the App Store and installed on iPads and iPhones running iOS 8.4 or higher.



WHAT ARE THE KEY FEATURES?

Hardware features

- Control of any device that can be operated by InfraRed signals including TVs, set-top boxes, light switches, power sockets, bed controls and door openers.
- Powerful InfraRed learn/transmit hardware. Single codes, toggle codes, macros and safety codes can be recorded.
- Pre-recorded database of common InfraRed signals including GEWA, Possum, Siemens KNX, X10, FellerBeamIt, UPC and SKY.
- Control of EasyWave devices with optional internal 32 channel RF transmitter.
- Direct control of Z-Wave devices with optional internal 40 channel scene controller.
- Control of Z-Wave devices over Wifi using a Z-wave gateway.
- Single switch, two switch and joystick inputs.
- Interface cables for R-Net and DX wheelchair control systems.
- Long-life rechargeable Li-Ion battery with mini USB charger.
- Audible low battery warning, Bluetooth connection, InfraRed transmit and charging status LEDs.
- Control of external devices using relay output.

Software features

- Comprehensive, graphic based, environmental control.
- Large database of icons as well as the ability to choose images from the camera roll.
- Telephony functions: Wake-up, answer/make calls, send/receive texts.¹
- Secondary functions: Music player, photo album, camera, internet, reminders.¹
- Scanning options: Automatic, short click, two switch, adjustable scanning speed, acceptance time, auditory scanning and many other programmable options.²
- Voice output for text-to-speech, auditory scanning and read-out of SMS messages. Voice recognition for environmental control.³
- Word prediction and word anticipation.³
- HouseMate's HID profile ensures full control over all third party apps.
- Apps can be downloaded free with automatic updating as new versions become available.

Notes:

1 = On Android devices these functions are integrated into the ClickToPhone app. On iOS devices they can be achieved using system apps.

2 = On iOS devices scanning options are limited to those available using Switch Control.

3 = Features specific to ClickToPhone Android app. To avail of such features on an iOS device may require the installation of third party apps.

WHERE CAN I GET ONE?

We have agents in many countries throughout the world who will be happy to introduce you to **HouseMate**.

Visit our website at www.housemate.ie for further information or email info@housemate.ie

SPECIFICATIONS:

Dimensions:	95x80x30mm
Battery:	1800mAh, 3.7v Li-Ion rechargeable battery
Connectivity:	Bluetooth Smart (4.0), InfraRed 30Khz-60Khz & 512Khz, Z-Wave, EasyWave
Connections:	3.5mm single/dual switch i/p 3.5mm relay o/p 6 pin Mini DIN Mini USB
Compliance:	MDD 2007/47/EC EMC 2004/108/EC



Manufactured in Ireland by:

Unique Perspectives
Limited

*Innovative Technology for People with
Special Needs*

a: Callan, Kilkenny
Ireland

e: info@housemate.ie
w: housemate.ie

t: +353 56 7725913

Local Agent:

Point-It! Jogaicks

House

Click to Phone
Geni

CLICK TO GO Scanner

Click to Phone
Android
Jogaicks

Quantaf

Point-It! Jogaicks

Quantaf

Jogaicks

Quantaf

Jogaicks