

# Mount'n Mover

by BlueSky Designs

## Eval Sheet

www.mountnmover.com

Phone: 612.724.7002 // 888.724.7002

Fax: 888.311.4435 // Intl: 612.724.7002

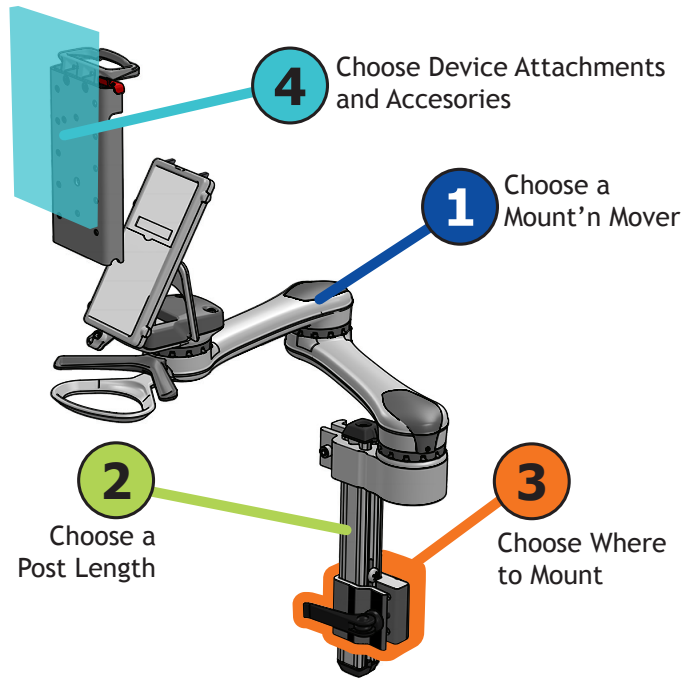
Contact: Special Needs Computers | T: 1-877-724-4922

in Canada F: 1-877-724-9996

Follow these steps to fully specify a Mount'n Mover system.

Client Name: \_\_\_\_\_  
 Chair Type: \_\_\_\_\_  
 Second Chair: \_\_\_\_\_  
 Device(s) to Attach: \_\_\_\_\_

Contact Name: \_\_\_\_\_  
 Email: \_\_\_\_\_



### Step 1 : Choose a Mount'n Mover

Note: All systems come with a **FREE** Quick Release Plate (QRP)


**Dual Arm Mount'n Mover**



**M2-TQ-H \***   
 (High Resistance Hinge)

**M2-TQ-L \***   
 (Low Resistance Hinge)

**Single Arm Mount'n Mover**



**M1-TQ-H \***   
 (High Resistance Hinge)

**M1-TQ-L \***   
 (Low Resistance Hinge)

**Tilt'n Turner**



**M0-TQ-H \***   
 (High Resistance Hinge)

**M0-TQ-L \***   
 (Low Resistance Hinge)

#### \*Hinge Resistance:

We recommend the High Resistance Hinge for heavier devices (5 lbs. [2.3 kg] or greater).


The High Resistance Hinge deters device movement when the tilt lever is unlocked. Both **H** and **L** hinges can be securely locked using the tilt lever lock.

### Step 2 : Choose a Post Length

Minimum post length is determined by the distance from the mounting point to the bottom of a person's tray or device when it is in his/her preferred operating position.

Measure **Distance A** in the diagram and select the next longest post.

**Post**



8" Post **P8**

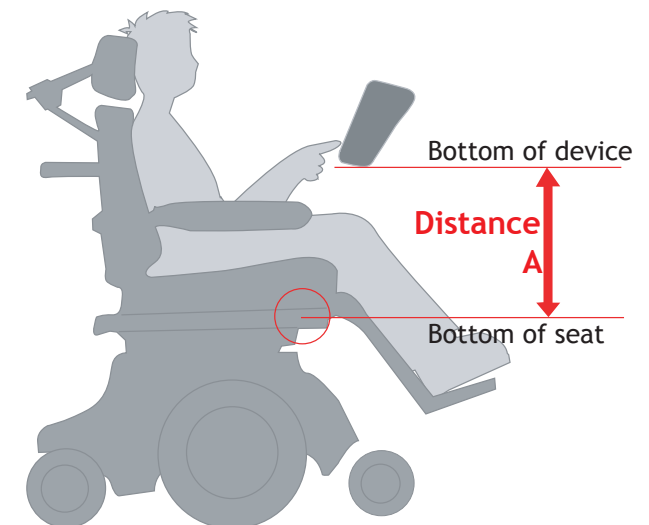
12" Post **P12**

18" Post **P18**

24" Post **P24**

Custom Post Length  inches\*

\* Custom post lengths available.

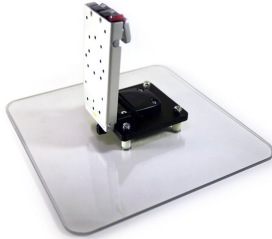


# Step 3 : Choose Where to Mount

Mount to any combination of Wheelchair, Table or Floor Stand

## 3 : Table Solutions

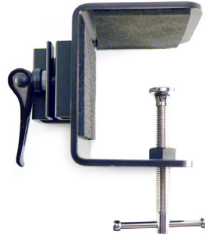
### Mount'n Tilter



- Ideal for surface mounting
- Does not include QRP

MNT

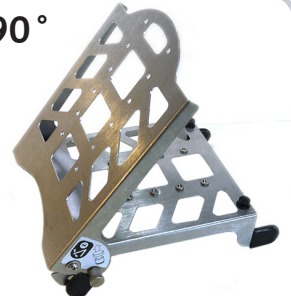
### Table Clamp



- Attach your mount to a table!
- Designed for use with Post & Mount

TC

### Stand +90°



- Table stand for devices, and
- Downward tilt for mounted devices

DP-STAND90

## 3 : Floor Stands

### Basic Floor Stand



Use your Mount'n Mover on a Floor Stand, move from wheelchair or table to Floor Stand in seconds. Easy access from bed!

### Floor Stand Options

FS (Basic Floor Stand)

### Options:

- 4C (4 "total lock" casters)

- E (Horizontal Extension)   
Adds up to a 16" horizontal extension

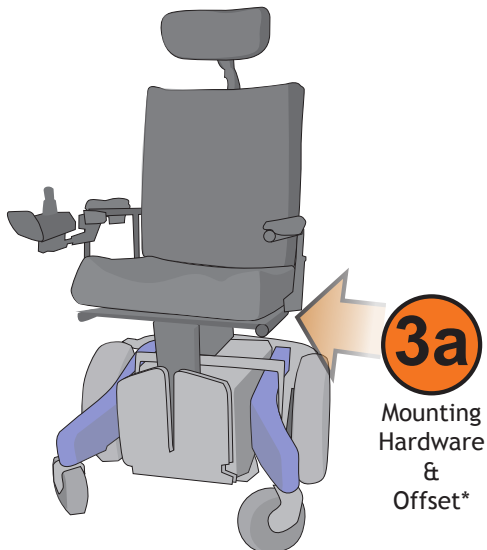
Basic FS has 2 in-line wheels and 2 "Total-Lock" casters



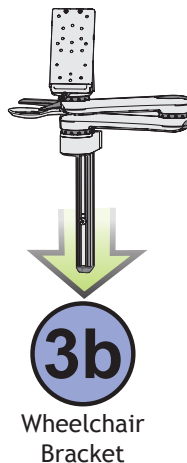
Horizontal Extension Option:



## 3 : Wheelchair Mounting



+



### Overview

Wheelchair Mounting is divided into two stages:

#### 3a Select Mounting Hardware

- Direct Wheelchair Attachment, and
- Offset Components (Offset components are optional)

#### 3b Select Wheelchair Bracket(s)

The Bracket is attached to the Mounting Hardware selected from 3a. The Mount'n Mover Post is then inserted into the Wheelchair Bracket square clamp.

## Wheelchair Mounting - 3a Select Mounting Hardware

### Adapter Plate



- Most compact plate
- For Hole Spacing 1"-2"

WC-AP

### Multi-Purpose Plates

All Adapter Plate(s):

- Can be used as with bridge clamps.
- Accommodate a range of spacing for 1/4" or 6mm bolts.

Adapter Plates 2 and 4 can be used for:

- Permobil UniTrack
- Permobil Corpus
- Quantum/Jazzy Tie-Downs

### Adapter Plate 2



- Longer plate for offset

WC-AP2

### Adapter Plate 4



- More attachment options
- Also for 5/16" or 8mm bolts

WC-AP4

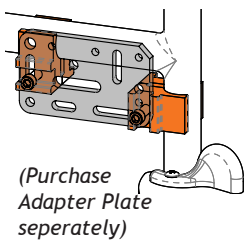
### T-Nut



- Compatible with Invacare and Quantum slide track.

WC-TN

### Bridge Clamp



(Purchase Adapter Plate separately)

Bridge clamps must be used in pairs, spanned with an adapter plate.



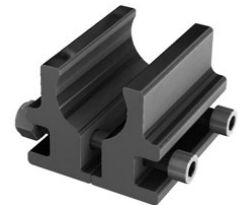
- 1" Bridge Set WC-R1B-SET
- 7/8" Bridge Set WC-R7/8B-SET
- Mixed Set (1 ea.) WC-R-Mixed-SET



- 1" Bridge (1)
- 7/8" Bridge (1)

### Round Clamp

For mounting vertically to round tubing



1" Clamp WC-R1

7/8" Clamp WC-R7/8

## Offset Options

Why Offset?

- Get around obstacles like trays, brakes, footrests and armrests.
- Position the Wheelchair Brackets and post for best position.
- Compensate for mounting angle so post is vertical.

Adapter Plate(s) can also be used to offset mounting forward or upward.

### L-Angle Extension



Can be used in pairs to extend mounting up to 7"

WC-LAE

### Adapter Plate(s)



AP2 is a longer offset.  
AP4 has more options.

WC-AP2

WC-AP4

### Angle Adjust Plate



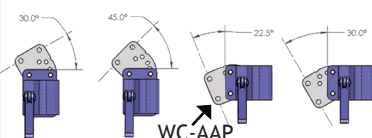
Compatible with any mounting component. Adjust post to vertical (every 7.5°).

WC-AAP

## Wheelchair Mounting - 3b Select Wheelchair Bracket(s)

### Solid Wheelchair Bracket

Configurable in 2 orientations. Compact profile. Minimal play/slop. More secure.

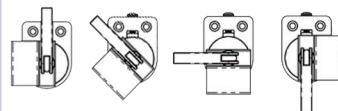


WB2

Use with WC-AAP for mounting at an angle (7.5 degree increments)

### Adjustable Wheelchair Bracket

Use where positioning requires frequent angle adjustment. Adjust "on-the-fly" without removing hardware. Slight play in assembly. Lock to every 5°.



WB

### Wheelchair DAESSY adapter



Compatible with DAESSY wheelchair hardware.

WB-DAESSY

# Step 4 : Choose Device Attachments & Accessories

Access anything, anywhere! Select access for one or multiple devices and trays

## 4 : BlueSky Designs Accessories

### Quick Release Plate



One comes free with each Mount'n Mover.

**QRP**

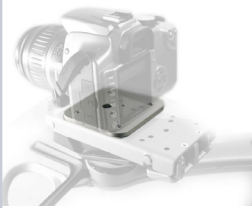
### Universal Rotator



Add a degree of freedom between tilt and device. Great for eyegaze and tablets.

**DP-UR**

### Camera Plate



Turns a Quick Release Plate into a camera stand! Compatible with other tripod heads

**DP-CAM3**

### Stand +90°



Extend your tilt range to 180° Table stand for devices, and downward tilt for mounted devices

**DP-STAND90**

### Phone Plate

Landscape or portrait

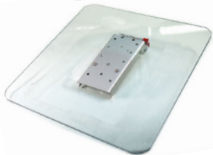


Attachment plate for mobile phone. Includes an Otterbox Defender swivel case. Shown with Quick Release Plate (not included).

**DP-PHONE-OB**

## 4 : Tray Options - Reading, Laptops, iPads, etc

### 12"x 12" Tray

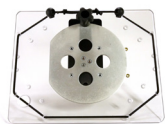


Multipurpose tray. Adapt it for your needs.

**TR-12x12**

Add QRP?

### iPad-Tablet Tray



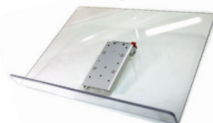
Great for iPad and Tablet. Easily switch from landscape to portrait with Universal Rotator (shown).

**TR-iTab**

**TR-iTab-UR**   
(With Universal Rotator)

Add QRP?

### 12"x 16" Tray with Lip

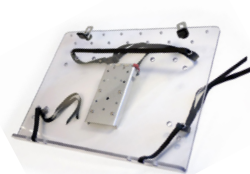


Multipurpose tray with lip. Great for books, tablets, etc. Angle it flat and turn it around for writing or eating.

**TR-12x16**

Add QRP?

### Laptop Tray



Tray, holes and straps fits most laptops securely. Easily remove your laptop.

**TR-LT**

Add QRP?

### Tablet Tray (with hinge tray)

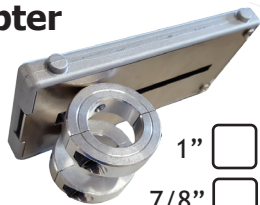


**TR-iTab-Keyboard**

9.5" x 12" (x2)

### Tilt Plate Adapter

Compatible with DAESSY and Rehadapt. Other sizes available.



**TR-TPA**  
**1" or 7/8"**

1"

7/8"



Add a Swing Away Tray on a 12 x 16" or Laptop Tray to hold a mouse, phone or other small device. See website for information.

## 4 : Communication Device Attachments

### Attach any Device with Ease

Device plates attach communication devices to the Mount'n Mover's Quick Release Plate (QRP).

One QRP comes with each Mount'n Mover.

Find the attachment plate for your device		
MAKE	MODEL	PLATE
Tobii Dynavox	Maestro, T10, T15, V, Vmax, M3, DV4, MT4	DP-DV1
	EyeMax, Maestro w/eye gaze	DP-DV2
	EyeMobile	DP-MULTI1
	T 7, C15 w/eye gaze	Contact Us
	P10, C8, C12, CEye, S32,	DP-T1
	I12, I15	DP-T2
Prentke Romich Co.	Accent 800	QRP or DP-PRC4*
	Accent 1000	DP-PRC5
	Accent 1400, ECO2, ECOpoint, ECO-14, Vanguard, Pathfinder 2	DP-PRC1
	Accent 1200, Vantage Lite, Springboard Lite	DP-PRC4 *
Salttillo	NOVA chat (requires wheelchair mounting plate)	DP-PRC4 *
Others	(Jabbla)-Mobi/Tellus, (Abilia)-Rolltalk, AMDI, VESA (50,75,100mm), Smartbox	DP-MULTI1
iPad/Tablets	Fits most iPads / Tablets	TR-ITAB

Plates for AbleNet, Lightwriter and more are available. See website for specifics

\* DP-PRC4 plate requires a QRM mounting bracket from Prentke Romich Co.