

BJ-254 Control USB

Quick User Guide



BJ Live!
smart solutions that suit you

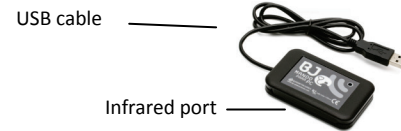
BJ Live!
smart solutions that suit you

www.biliveat.com

1. Equipment description

Use Control USB to control any electronic device and elements of your environment (lights, blinds, doors, ceiling hoist, TV, air conditioning, etc.) from your computer.

Control USB is comprised by the Control USB device and BJ Control software:



Software BJ Control



2. How to use

1 Download BJ Control software from:
<http://www.biliveat.com>

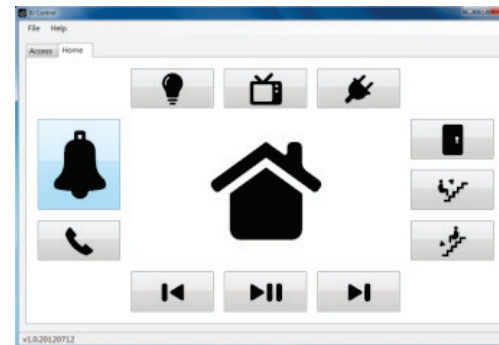
Save the file in your computer and start the installation process.

The Setup Wizard will guide you through the installation process.

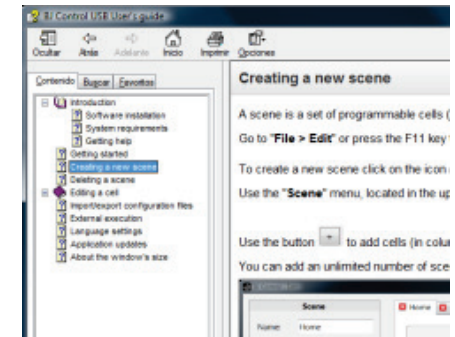
2 Plug the Control USB device into the USB port of your PC



3 Customize the remote control interface and functionality with BJ Control software.



4 Check the user's guide within the Help menu to learn everything about this product.



3. Proper care and use the device

- **Keep the device dry.** Moisture and liquids may damage the parts or electronic circuits of the device. Water damage to your device may void the warranty. **Dust may cause the device to malfunction.**
- **Do not drop the product** or subject it to impacts. It may be damaged if dropped. **Do not paint** your device or attach stickers to it.
- **Do not store the device near magnetic fields.**
- **Do not disassemble,** modify or repair the device. Any changes or modifications made to your device could void the warranty.
- When **cleaning** the device: **Use a towel or soft cloth** to clean the device and charger. **Do not use chemicals,** detergents or solvents.

Do not use it for any purpose other than that for which it was designed.

Medical devices

Radio equipment can interfere with the functioning of medical devices that are not suitably protected. Consult a physician or the manufacturer of the medical device to determine whether it is adequately shielded from external radio frequency energy.

Implanted medical devices

Manufacturers of medical devices recommend a **minimum separation** of 15.3 centimetres (6 inches) between a wireless device and an implanted medical device such as a pacemaker or implanted cardioverter defibrillator, to avoid potential interference with the medical device.

Operating environment

- During infrared recording, **make sure that there is nothing nearby generating an infrared signal.** Note that some types of fluorescent lighting emit infrared signals.
- **Other products that use the same frequency band** (433 MHz) as this remote control **can interfere** with the control of the receivers. Make sure that neither the remote nor the receivers are located near these sources.

4. Technical features

- USB connection 2.0
- Power supply: 5V dc, 200mA
- Size: 50x25x13mm
- USB cable: 1m
- RF working frequency: 433MHz

5. General information

Disposal

Waste electrical products should not be disposed of with household waste!

Dispose of the waste product via a collection point for electronic scrap or via your specialist dealer. Any unauthorized tampering with, or modifications to the product will annul this warranty.



Warranty

Within the statutory warranty period we undertake to rectify free of charge by repair or replacement any product defects arising from material or production faults.

Any unauthorized tampering with, or modifications to the product will annul this warranty.

Conformity

This product complies with the essential requirements of the Directive 2004/108/EC.

The Declaration of Conformity can be downloaded from the product's webpage at www.bjliveat.com.

Customer Service

If, despite of correct handling, faults or malfunctions occur or if the product was damaged, please contact us at the address below:

BJ Adaptaciones

C/ Mare de Déu del Coll, 70, Bajos
08023 Barcelona
España

Phone: +34 93 285 04 37

Fax: + 34 93 553 56 34

e-Mail: info@bjliveat.com

www.bjliveat.com

